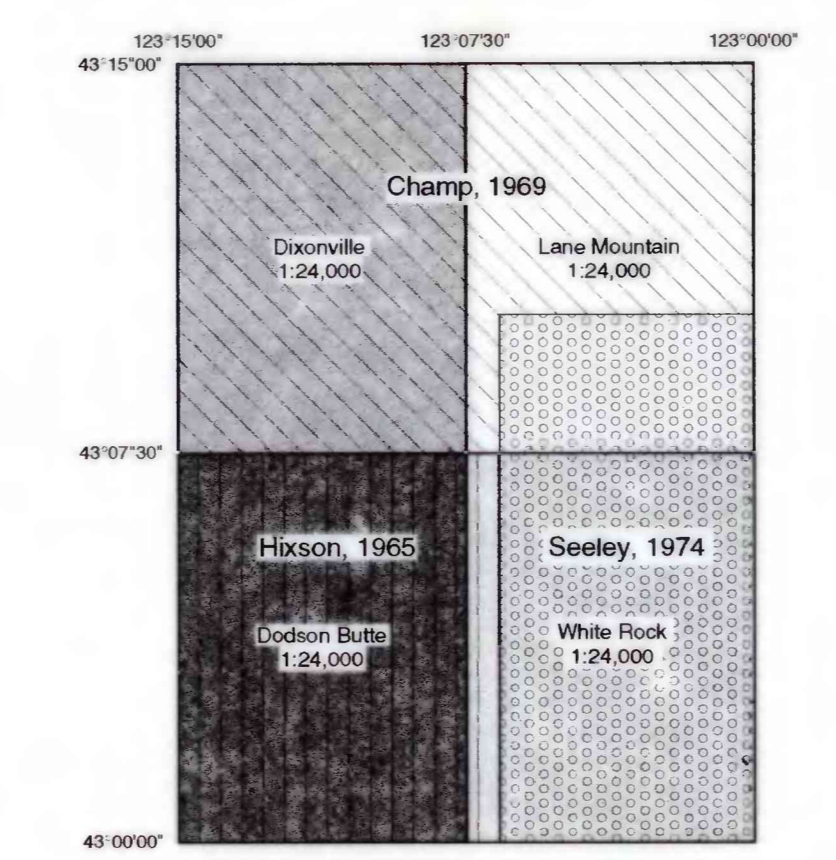
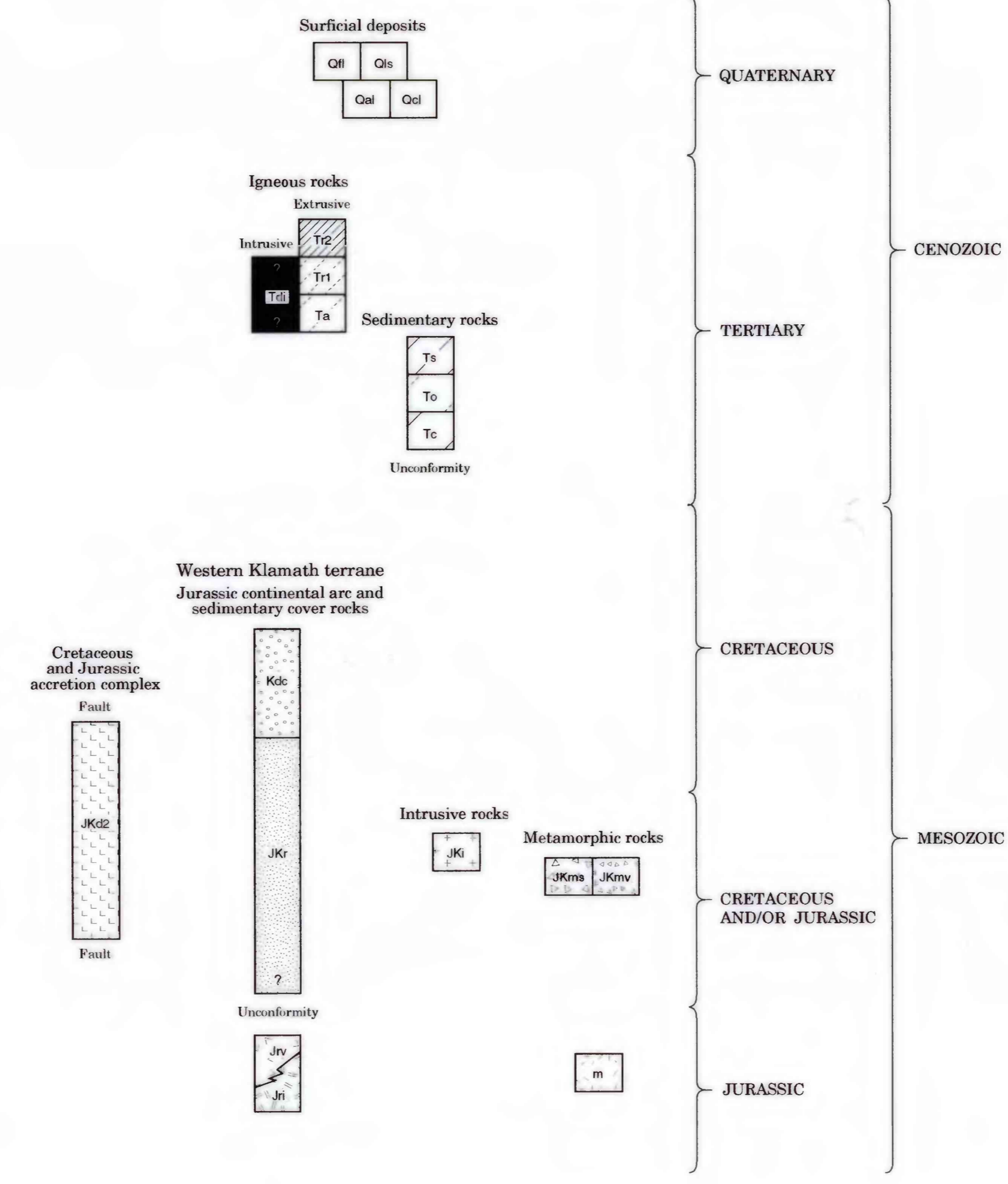


CORRELATION OF MAP UNITS



INDEX MAP SHOWING SUPPLEMENTAL SOURCES OF GEOLOGIC MAPPING FOR THE DIXONVILLE 1:62,500 QUADRANGLE

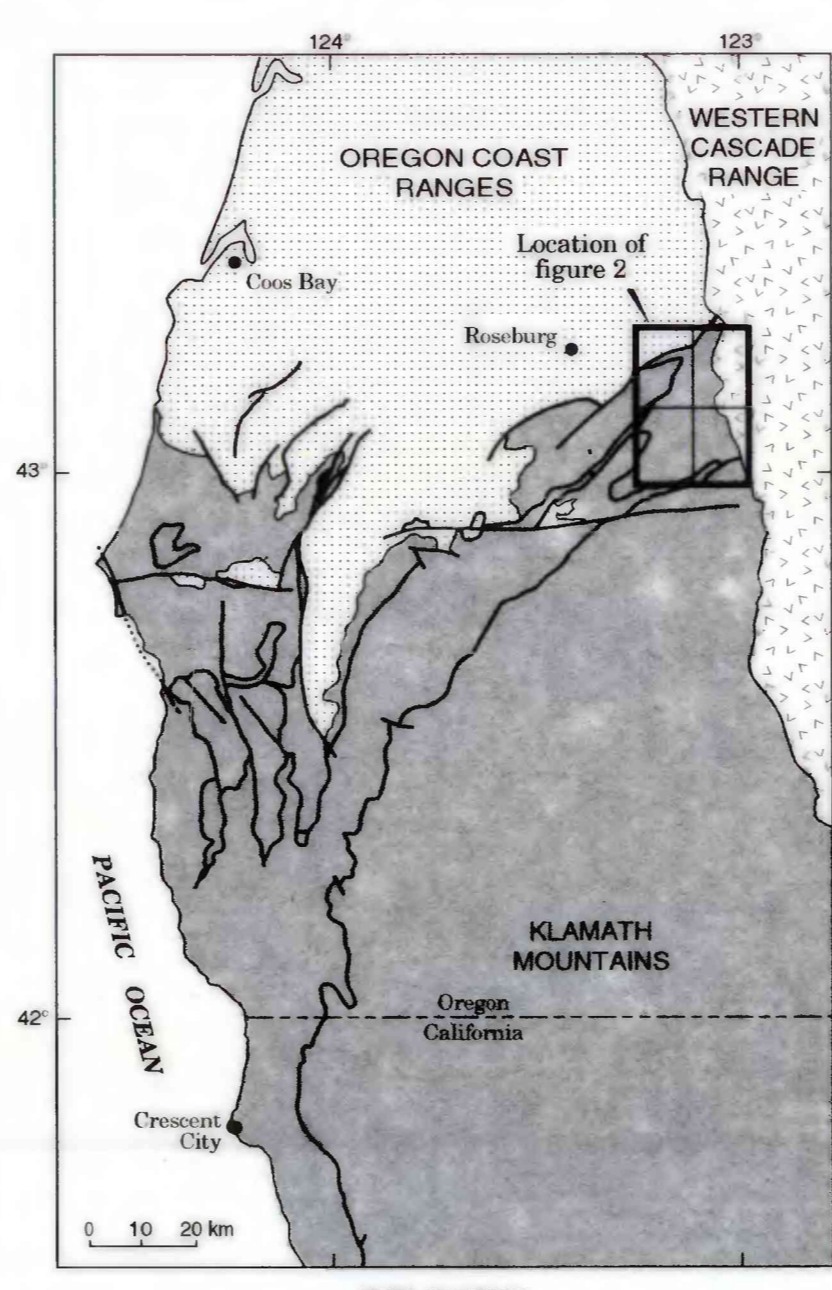


Figure 1. Location Map modified from Ryberg (1984) and Coleman and Lanphere (1991)

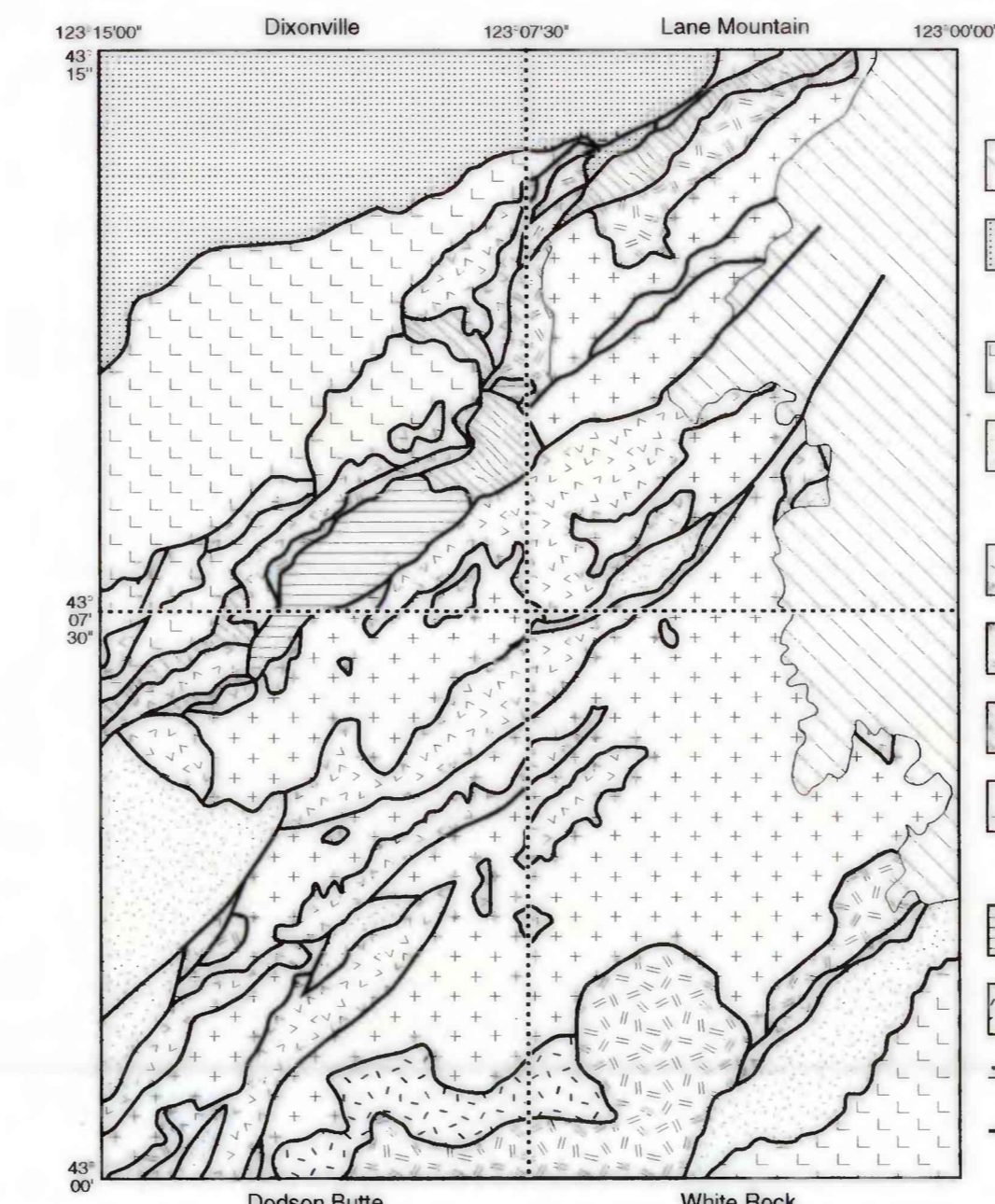
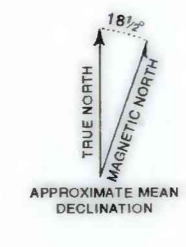


Figure 2. Generalized tectonic map of the Lane Mountain, White Rock, Dixonville, and Dodson Butte 1:24,000 quadrangles

- EXPLANATION**
- Western Cascade clastic and volcanic rocks
 - Early Tertiary rocks of the Oregon Coast Ranges
 - Mesozoic rocks
 - Accretion complex and semi-schistose rocks
 - Mesozoic sedimentary rocks
 - Dugean igneous complex
 - Volcanic extrusive rock
 - Mafic and intermediate intrusive rocks
 - Ultramafic rocks
 - Intermediate Plutonic rocks
 - Metamorphic rocks
 - Gneiss and mylonite
 - Gneiss
 - Conduit
 - Fault

Base from U.S. Geological Survey
White Rock (Professional edition), 1987
Lambert Conformal Conic



SCALE 1:24,000
CONTOUR INTERVAL 40 FEET
NATIONAL GEODETIC DATUM OF 1983



Geology mapped by A.S. Jayko, 1992-1993
D.S. database by J.S. Fenton and K. Ninc

RECONNAISSANCE GEOLOGIC MAP OF THE WHITE ROCK 7.5 MINUTE QUADRANGLE, SOUTHWEST OREGON

By
A. S. Jayko
1996

This report is preliminary and has not been reviewed for conformity with U.S. Geological Survey editorial standards or with the North American Stratigraphic Code. Any use of trade, product, or firm names is for descriptive purposes only and does not imply endorsement by the U.S. Government.
For sale by U.S. Geological Survey, Denver, Colorado 80202 or Reston, Virginia 20192