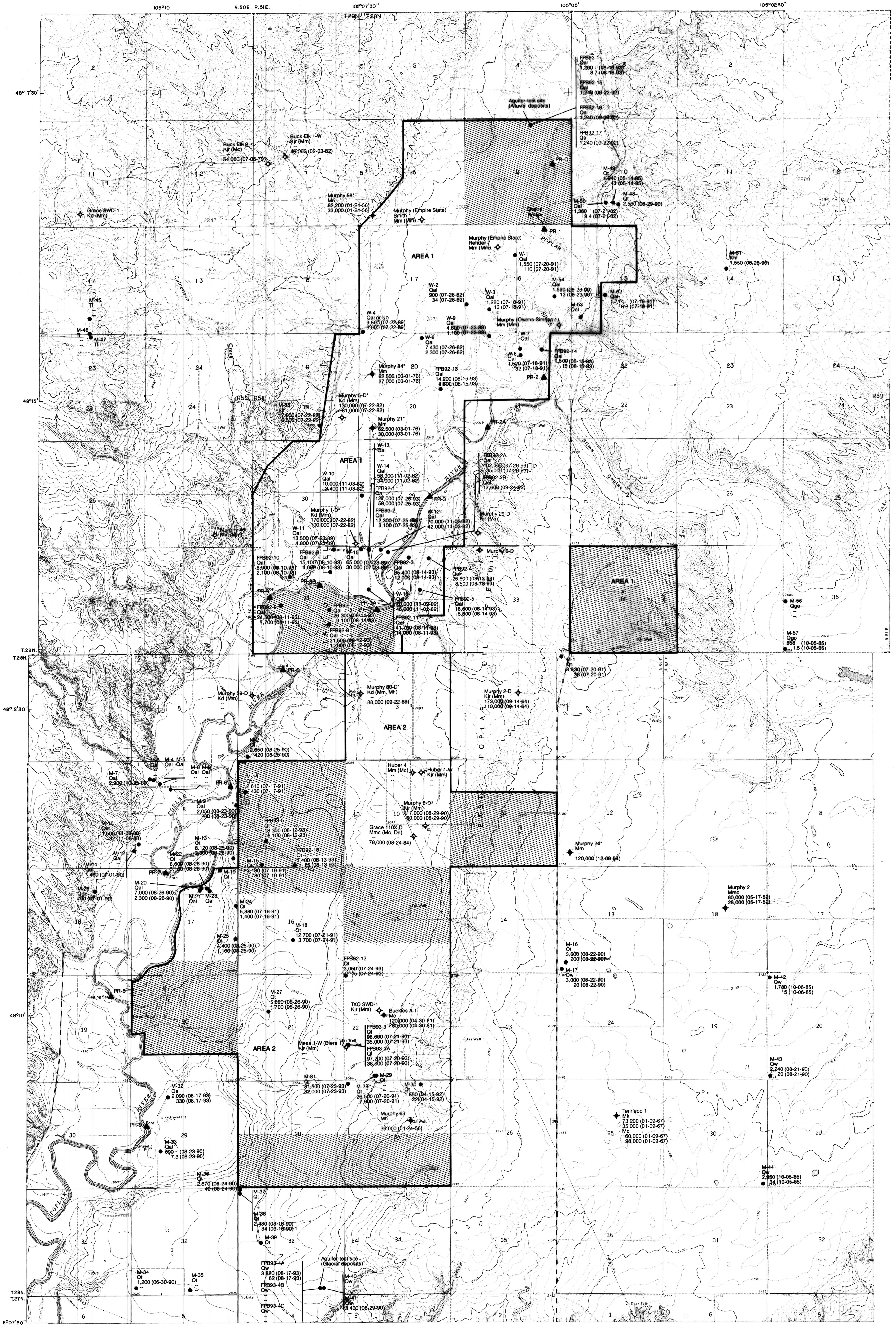


Thamke, J.N., and others, 1996.
Inventory data for the East Poplar Oil Field,
Fort Peck Indian Reservation, Northeastern Montana.



Base from U.S. Geological Survey Badger Creek, 1972; Goddard Lake, 1983; Long Creek East, 1983; and Poplar NE, 1972 quadrangles, 1:24,000

0 1/2 1 MILE
0 1/2 1 KILOMETER

CONTOUR INTERVALS 10 AND 20 FEET
SUPPLEMENTAL CONTOURS 5 AND 10 FEET

EXPLANATION

— BOUNDARY OF ELECTROMAGNETIC GEOPHYSICAL SURVEY—Area 1 includes alluvial deposits along Poplar River. Area 2 includes glacial deposits.

▲ PR-9 STREAMFLOW-MEASUREMENT SITE AND NUMBER—Data for these sites are reported in tables 10, 11, and 12.

● WELL SITES—First line is the well name (described in text). Second line is the geologic unit in which the well is completed (for brine-injection wells, the unit in parentheses is the source of the brine). Third line is the specific conductance (in microsiemens per centimeter at 25 degrees Celsius) of water from the well and the date of measurement (for brine-injection wells, this is the specific conductance of the injected water). Fourth line is the chloride concentration (in milligrams per liter) of water from the well and the date of the sample (for brine-injection wells, this is the chloride concentration of the injected water). Symbol — indicates no data.

● Existing privately owned well or Montana Bureau of Mines and Geology observation well

● U.S. Geological Survey monitoring well (from Levings, 1984)

AREAS OF ELECTROMAGNETIC GEOPHYSICAL DATA COLLECTION

□ Indicates area in which 0.1-mile site spacing was used

▨ Indicates area in which 0.2-mile site spacing was used

▩ Indicates area in which measurements radiate from a selected oil well

● U.S. Geological Survey monitoring well (installed during this investigation)

★ Oil well (asterisk indicates a well that was active as of 1994)

◆ Brine-injection well (asterisk indicates a well that was active as of 1994)

ABBREVIATIONS FOR GEOLOGIC UNITS ARE AS FOLLOWS—

Qal - Alluvium (Quaternary)
Qf - Glacial till (Pleistocene)
Qgo - Glacial outwash (Pleistocene)
Qw - Wicota Gravel (Pleistocene)
Tl - Flazville Formation (Pliocene and Miocene)
Khl - Hall Creek Formation and Fox Hills Sandstone (Upper Cretaceous)
Kb - Bearpaw Shale (Upper Cretaceous)
Kjr - Judith River Formation (Upper Cretaceous)
Kd - Dakota Sandstone (Lower Cretaceous)
Mh - Heath Formation (Upper Mississippian)
Mk - Kibbey Formation (Upper Mississippian)
Mm - Madison Group (Mississippian)
Mc - Charles Formation of Madison Group
Mmc - Mission Canyon Limestone of Madison Group
Dn - Nisku Formation (Upper Devonian)

MAP SHOWING LOCATION OF PRIVATELY OWNED WELLS, MONITORING WELLS, BRINE-INJECTION WELLS, SAMPLED OIL WELLS, SURFACE-WATER DATA-COLLECTION SITES, AND AREAS OF ELECTROMAGNETIC GEOPHYSICAL DATA COLLECTION FOR THE EAST POPLAR OIL FIELD, FORT PECK INDIAN RESERVATION, NORTHEASTERN MONTANA