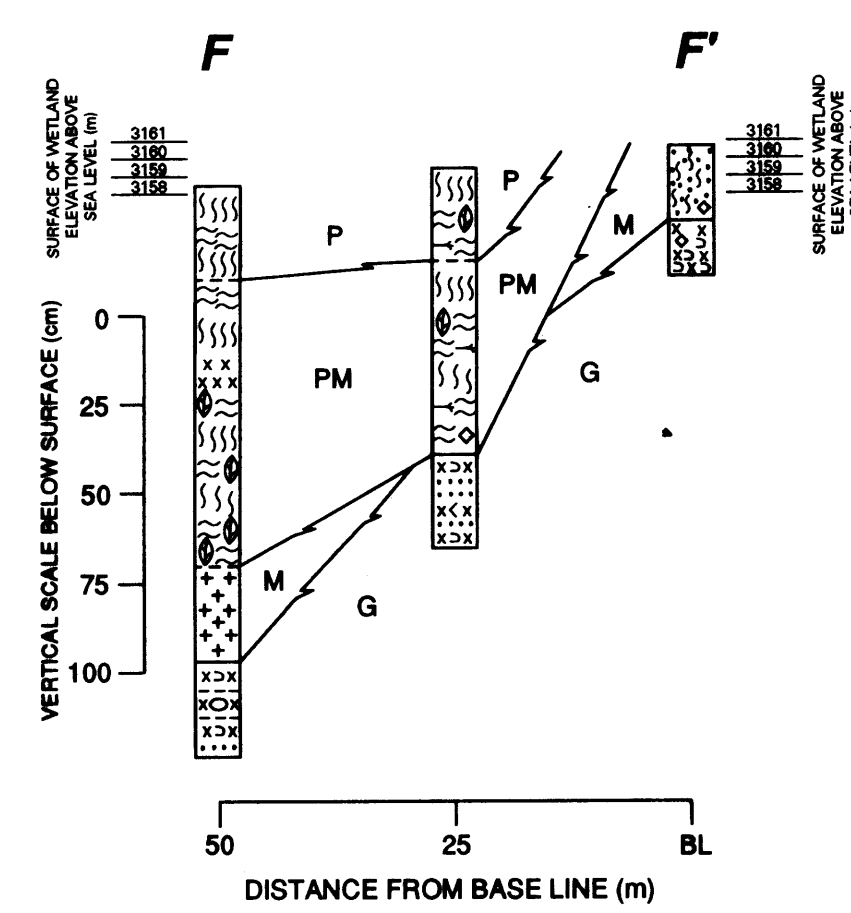
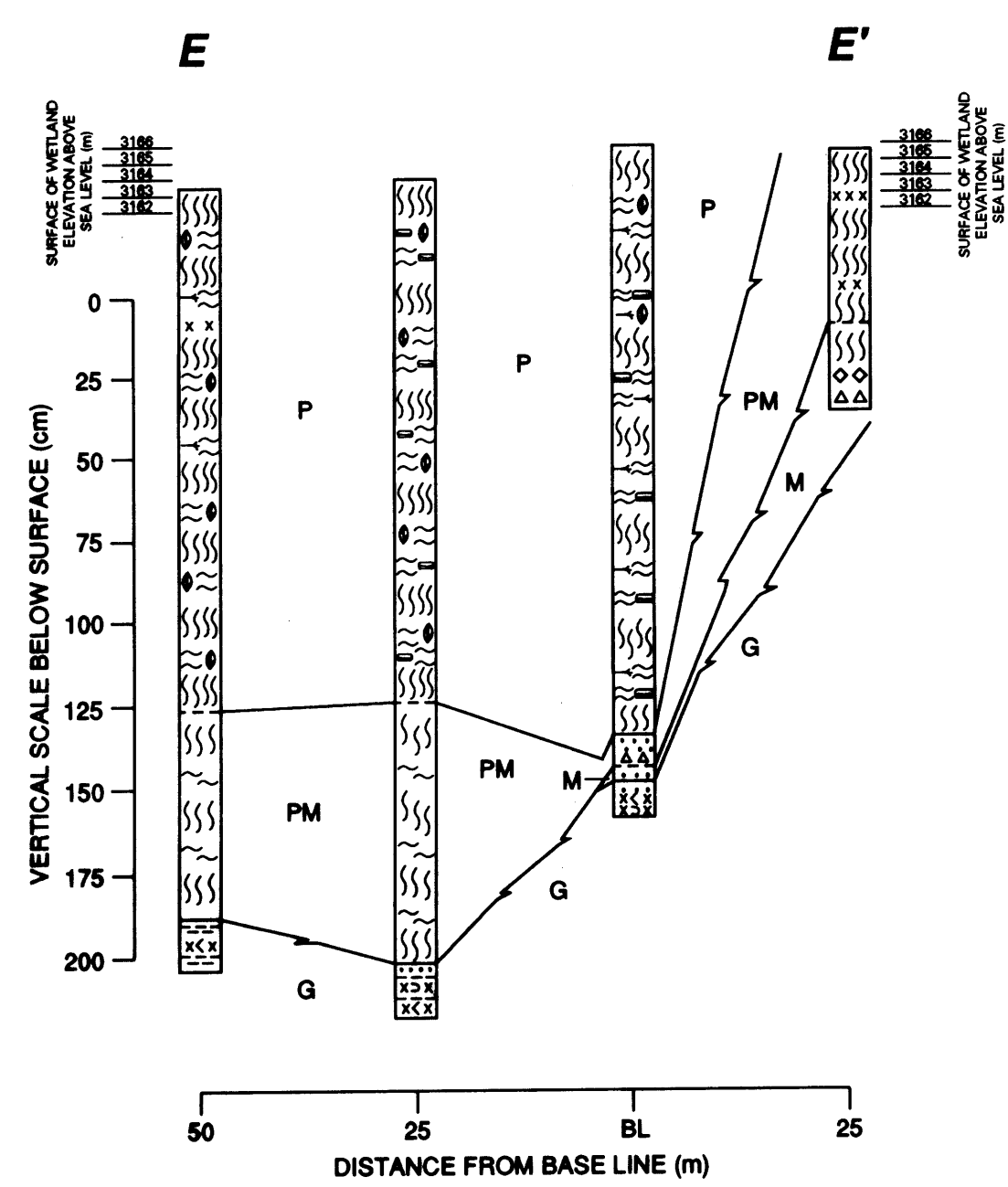
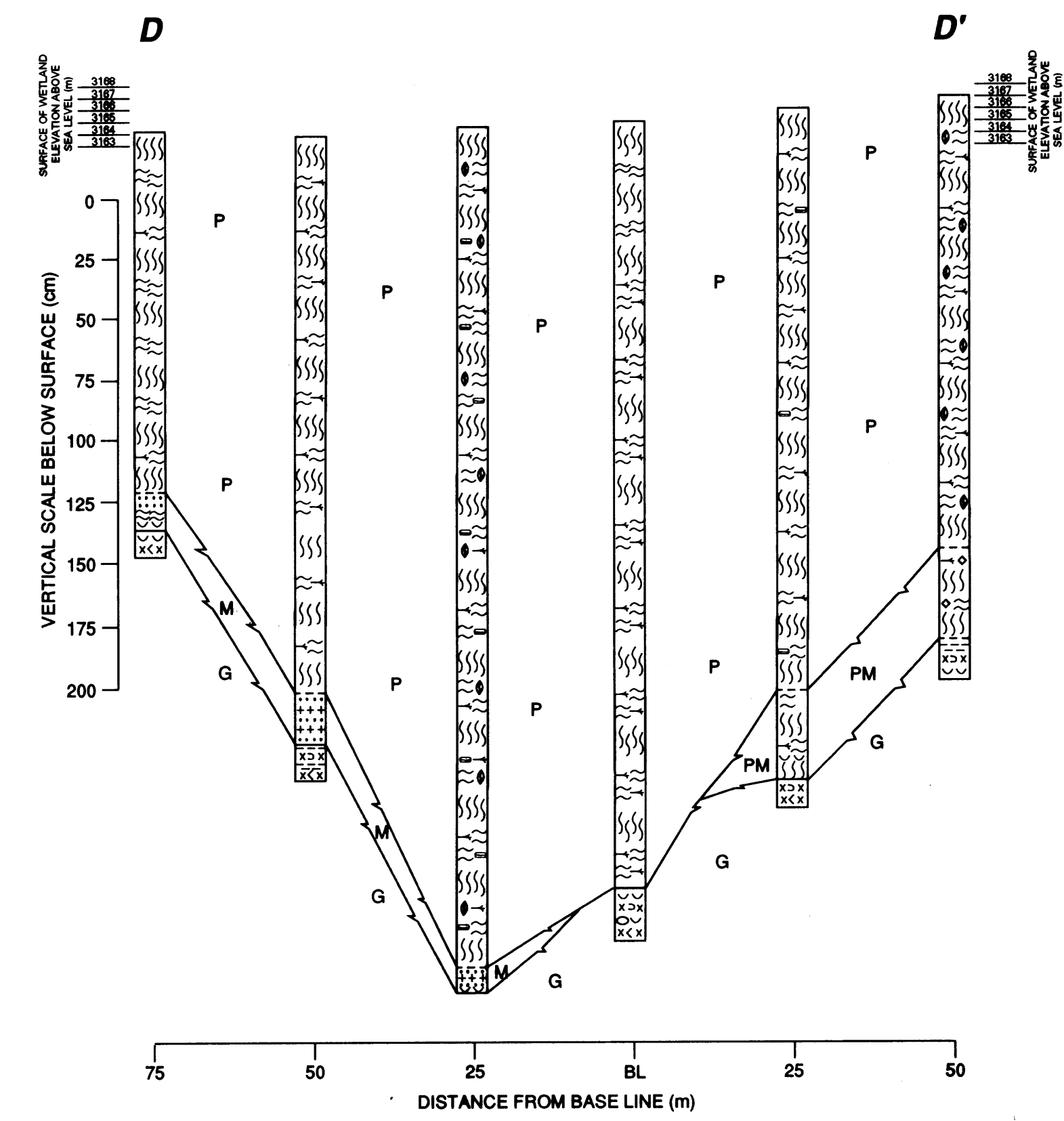
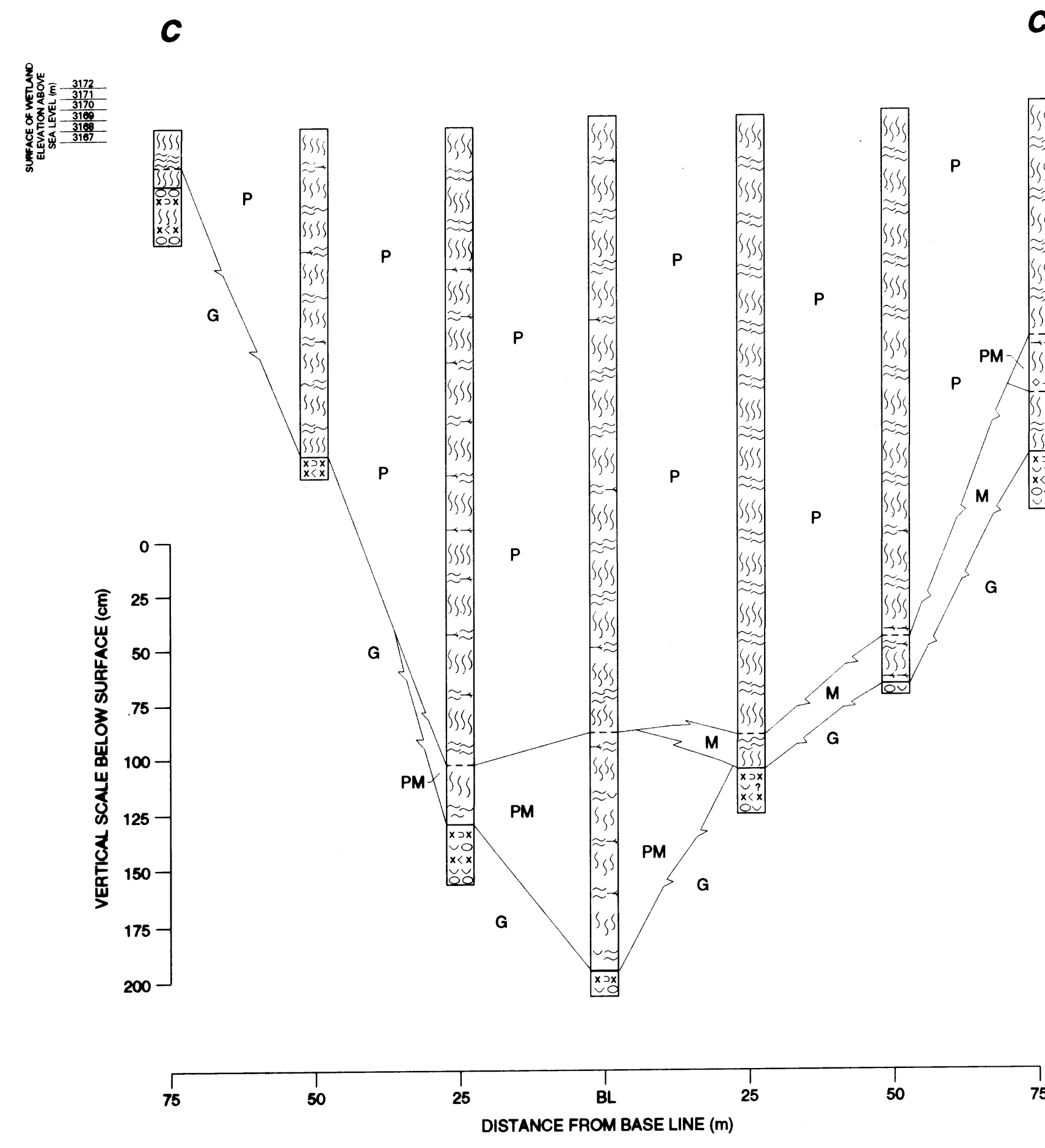
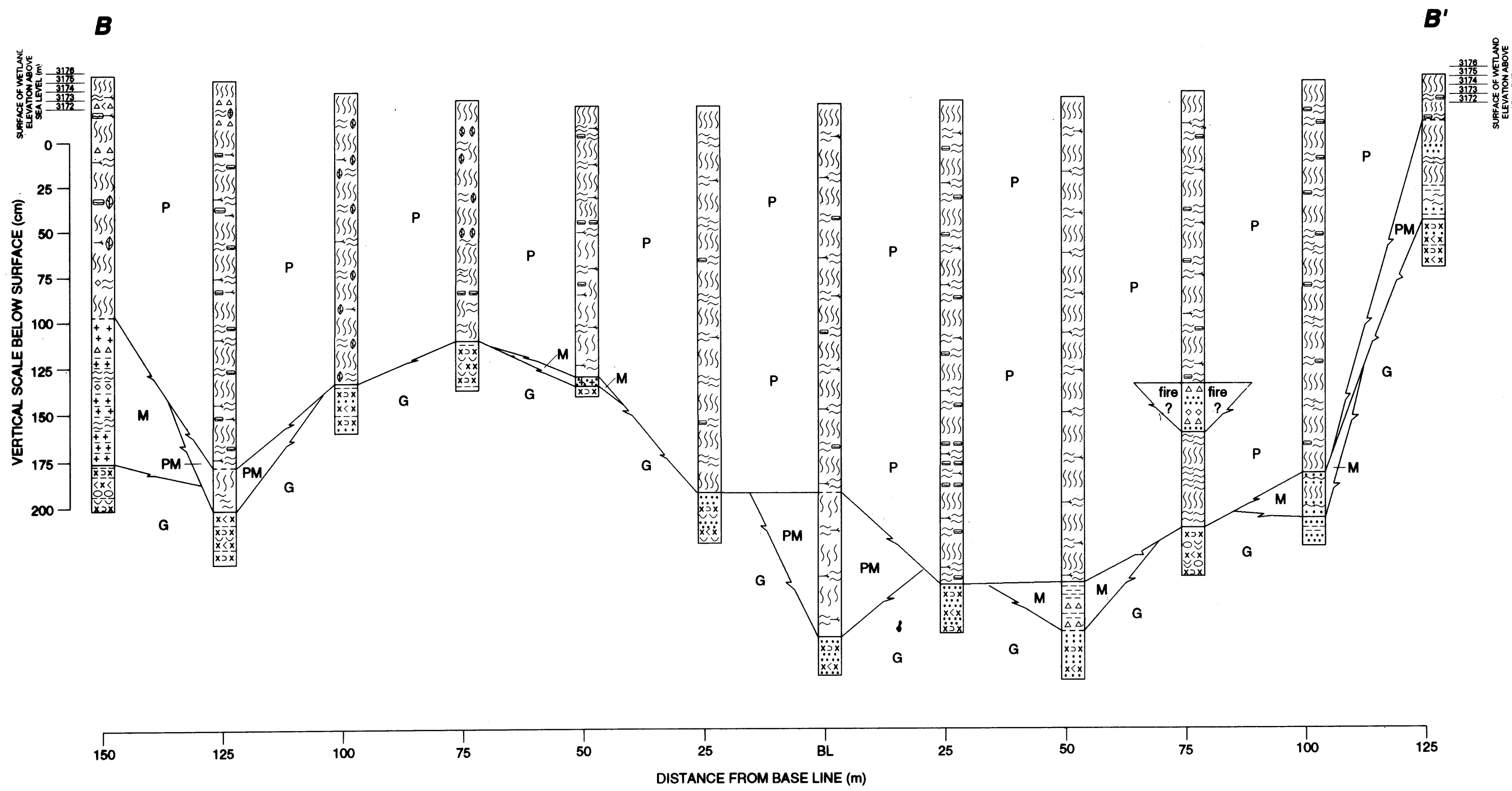


This report is preliminary and has not been reviewed for conformity with U.S. Geological Survey editorial standards or with the North American stratigraphic code. Any use of trade, product, or firm names is for descriptive purposes only and does not imply endorsement by the U.S. Government.



STRATIGRAPHIC STUDY OF ELK PARK WETLAND, GILPIN COUNTY, COLORADO

By

Eric D. McCafferty, and Douglas E. Owen

1996