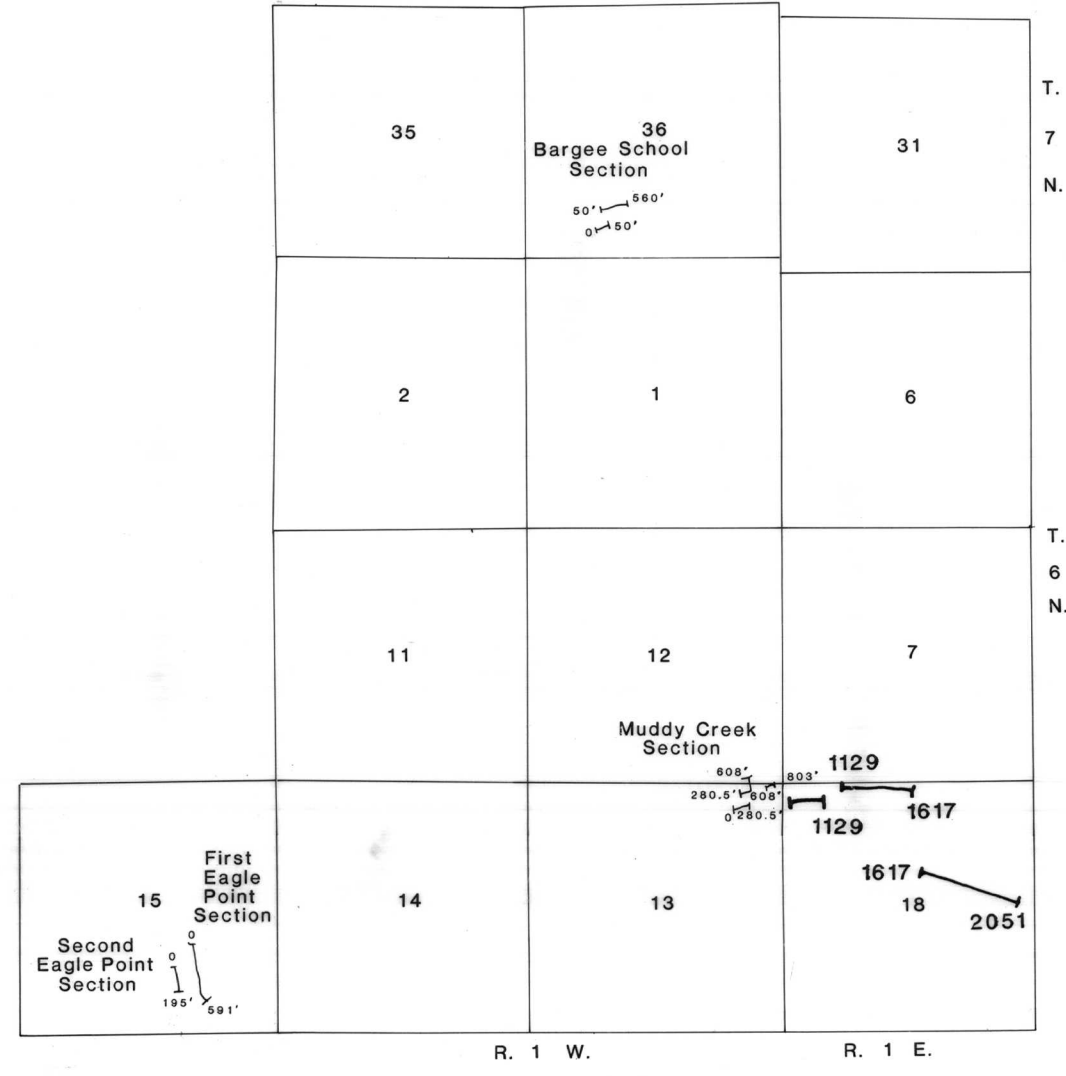
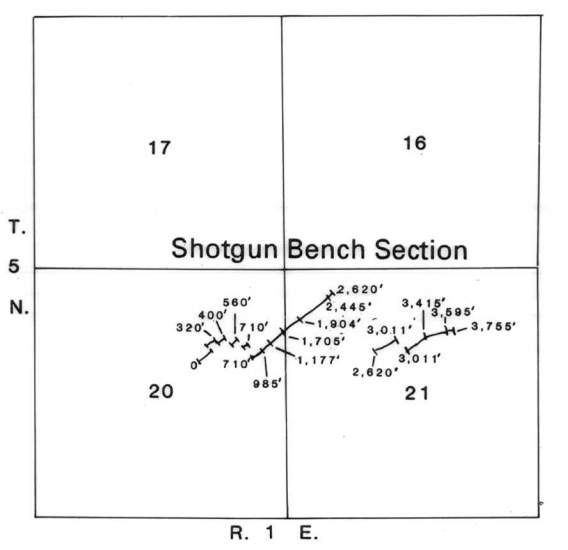


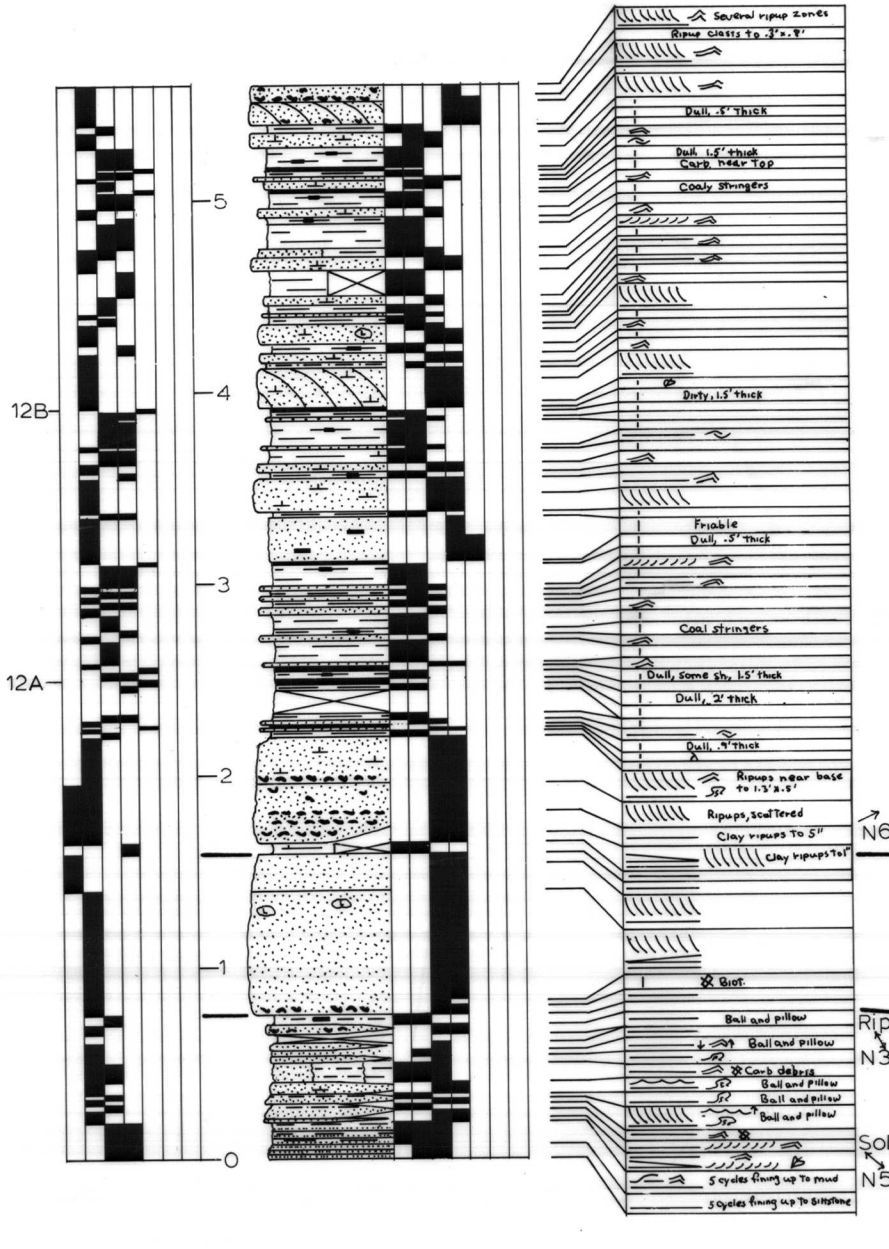
U.S. DEPARTMENT OF THE INTERIOR
U.S. GEOLOGICAL SURVEY



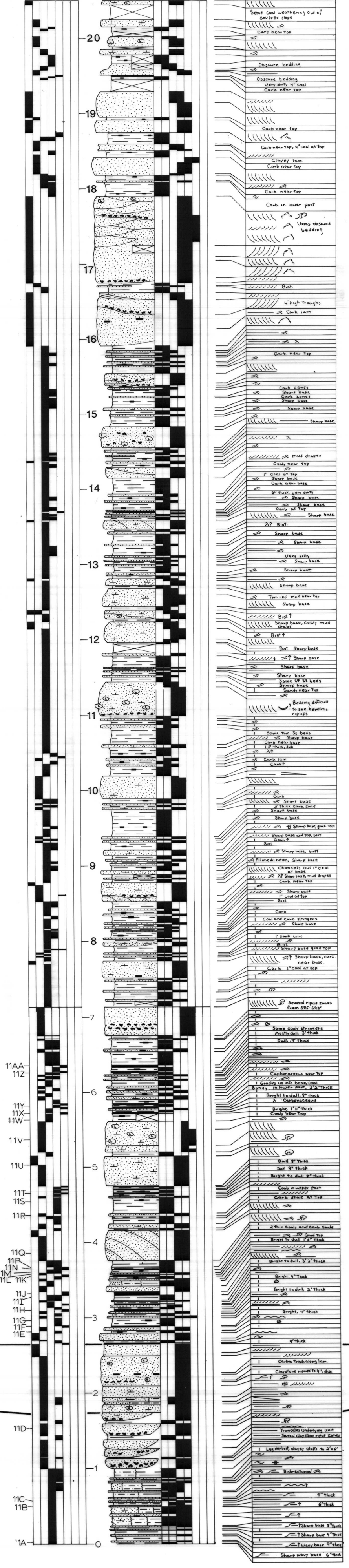
Locations of measured sections



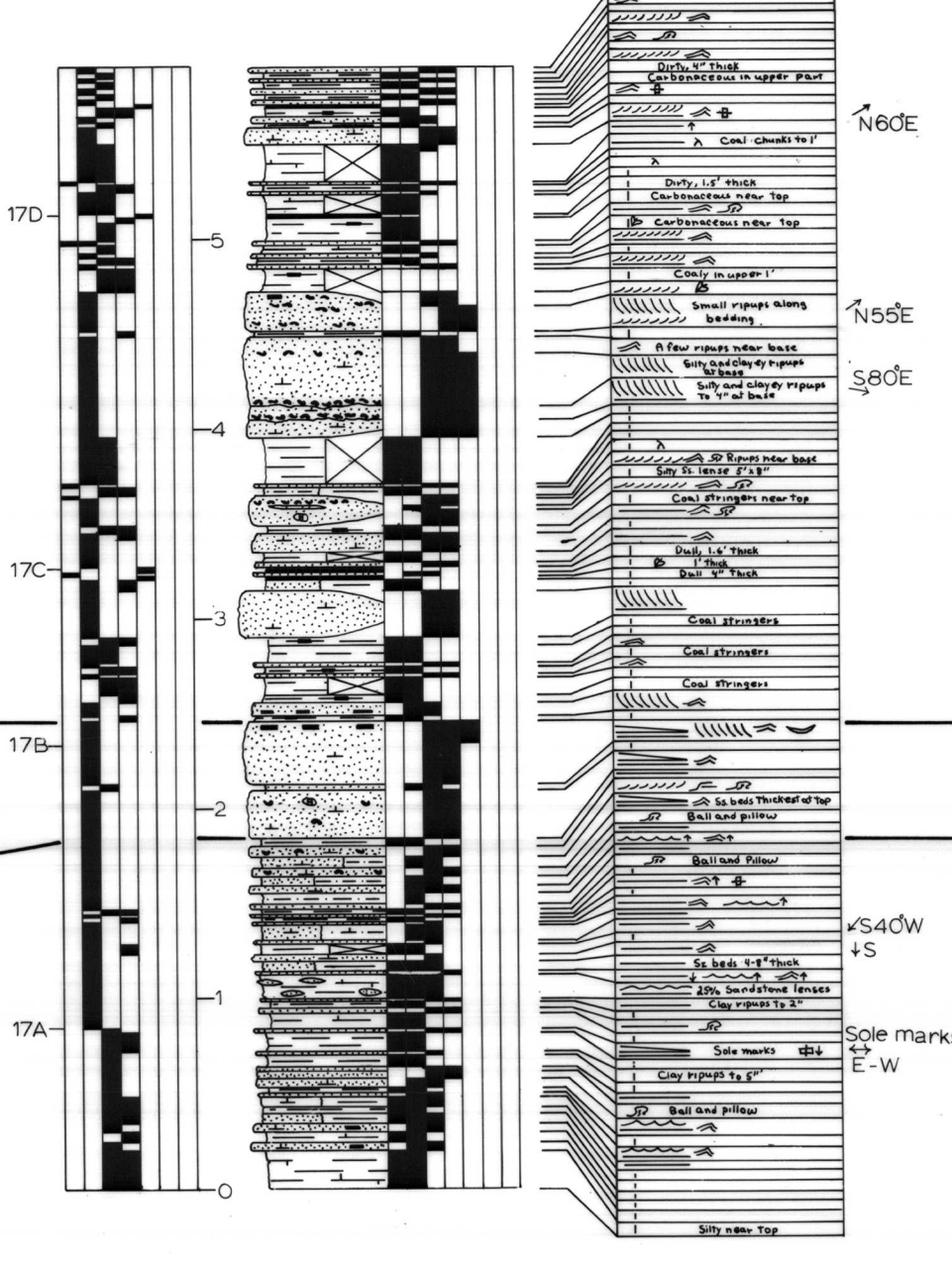
Bargee School Section
SW 1/4 sec. 36, T. 7 N., R. 1 W.



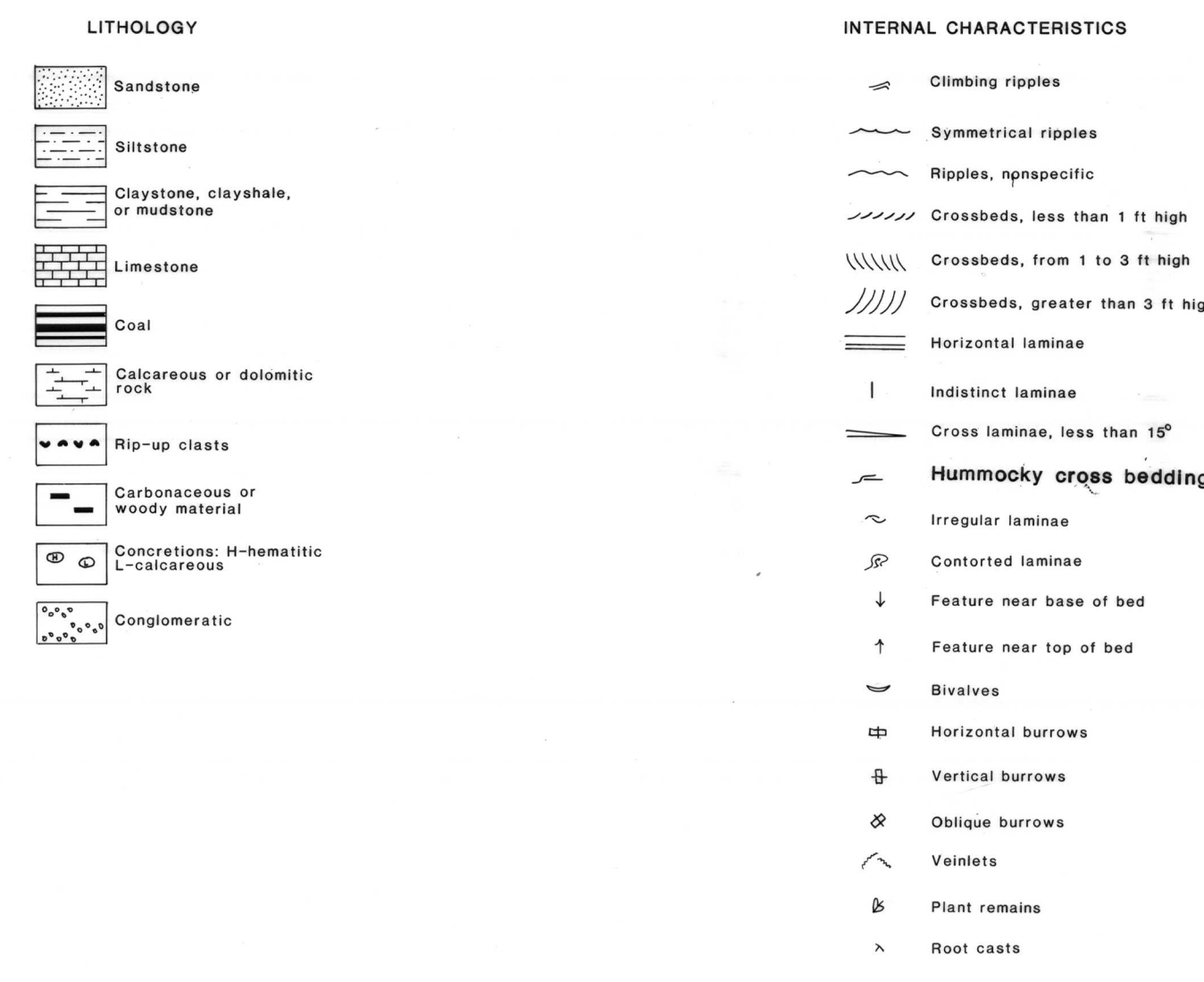
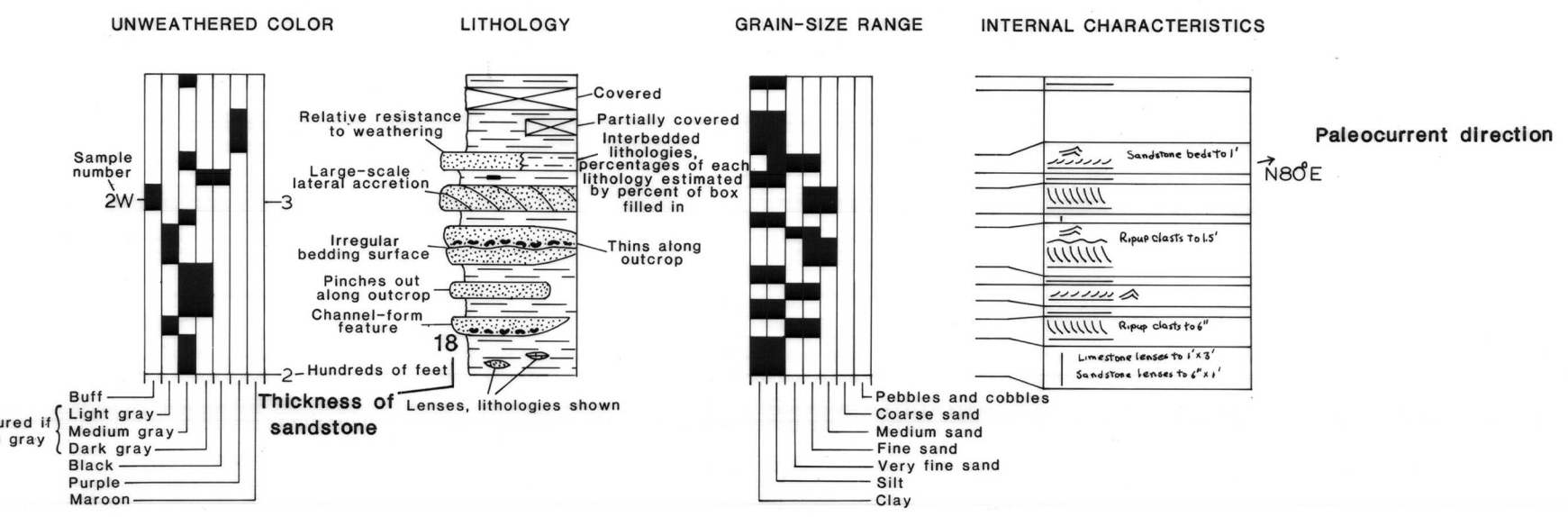
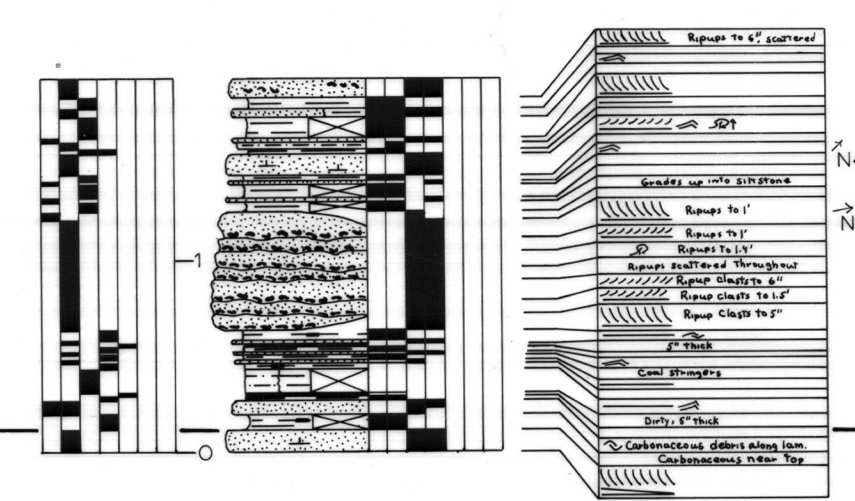
Muddy Creek Section
Sec. 7, T. 6 N., R. 1 E., Secs. 12, 13, T. 6 N., R. 1 W.



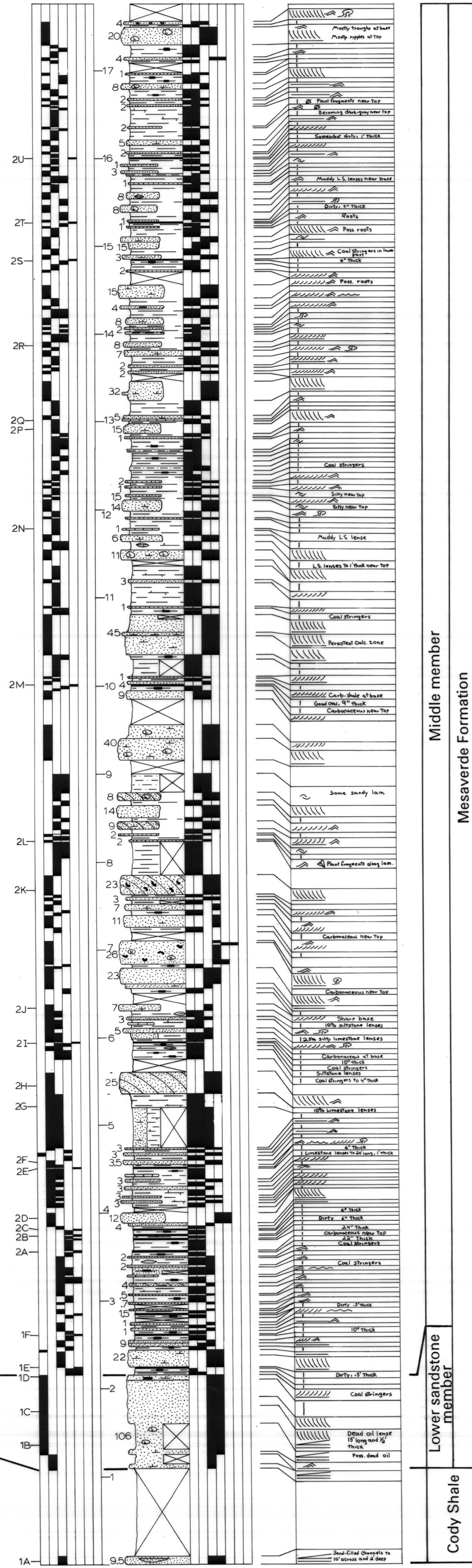
First Eagle Point Section
SE 1/4 sec. 15, T. 6 N., R. 1 W.



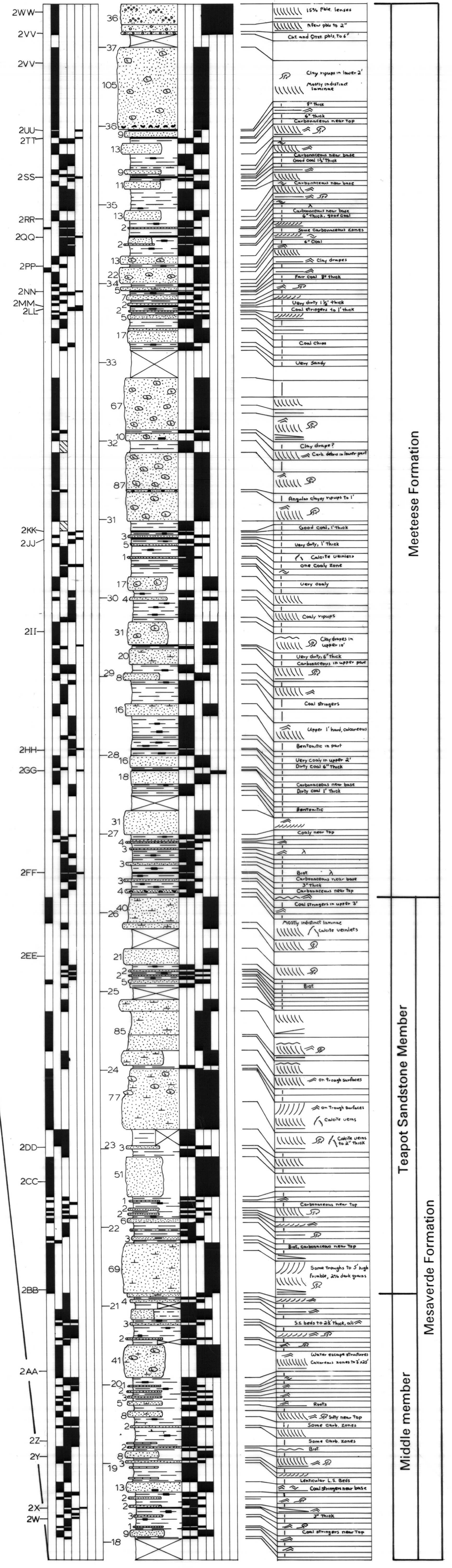
Second Eagle Point Section
SE 1/4 sec. 15, T. 6 N., R. 1 W.



Shotgun Bench Section (continued)



Shotgun Bench Section
Secs. 20, 21, T. 5 N., R. 1 E.



This report is preliminary and has not been reviewed for conformity with U.S. Geological Survey editorial standards or with the North American stratigraphic code. Any use of trade, product, or firm names is for descriptive purposes only and does not imply endorsement by the U.S. Government.