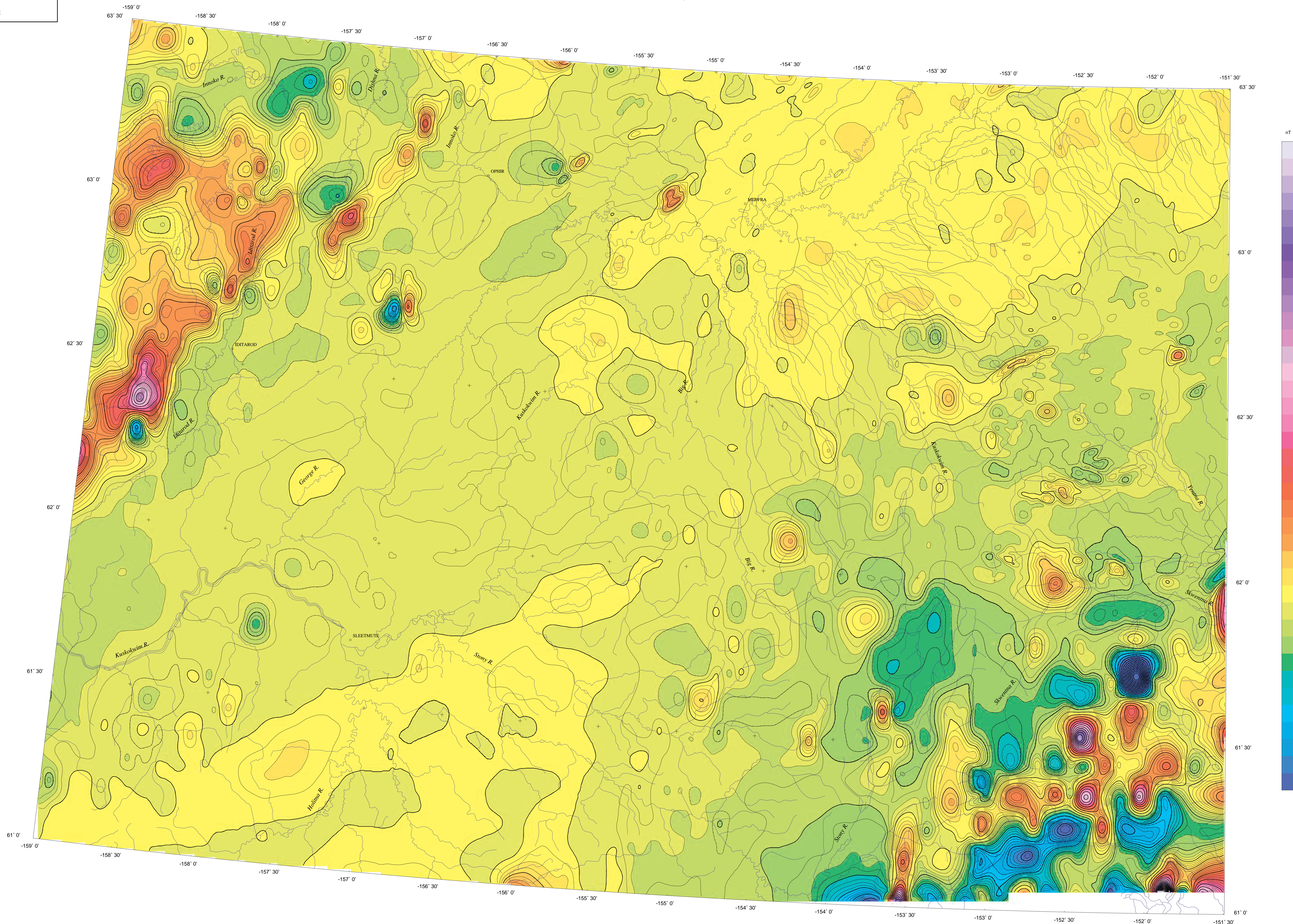


Merged Aeromagnetic Map of Interior Alaska
By John F. Meyer, Jr., and R.W. Saltus
USGS Map GP-1014, 1995
Map B. Southwest quadrant

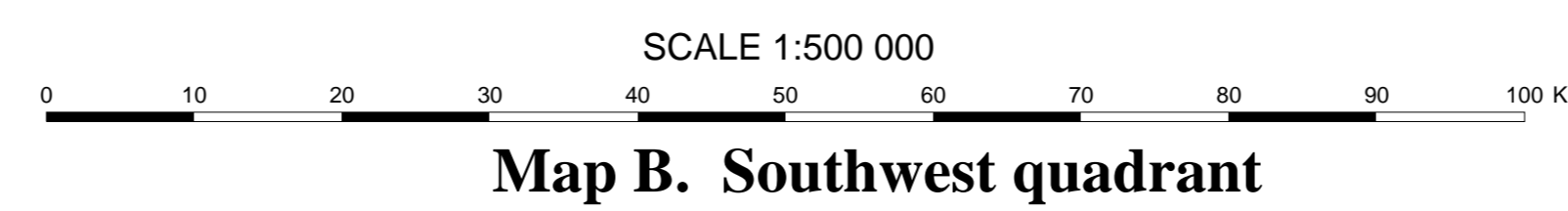
U.S. DEPARTMENT OF THE INTERIOR
U.S. GEOLOGICAL SURVEY

Prepared in cooperation with
THE STATE OF ALASKA, DIVISION OF OIL AND GAS

GEOPHYSICAL INVESTIGATIONS
MAP GP-1014



MERGED AEROMAGNETIC MAP OF INTERIOR ALASKA
By
John F. Meyer, Jr., and R.W. Saltus
1995



Map B. Southwest quadrant