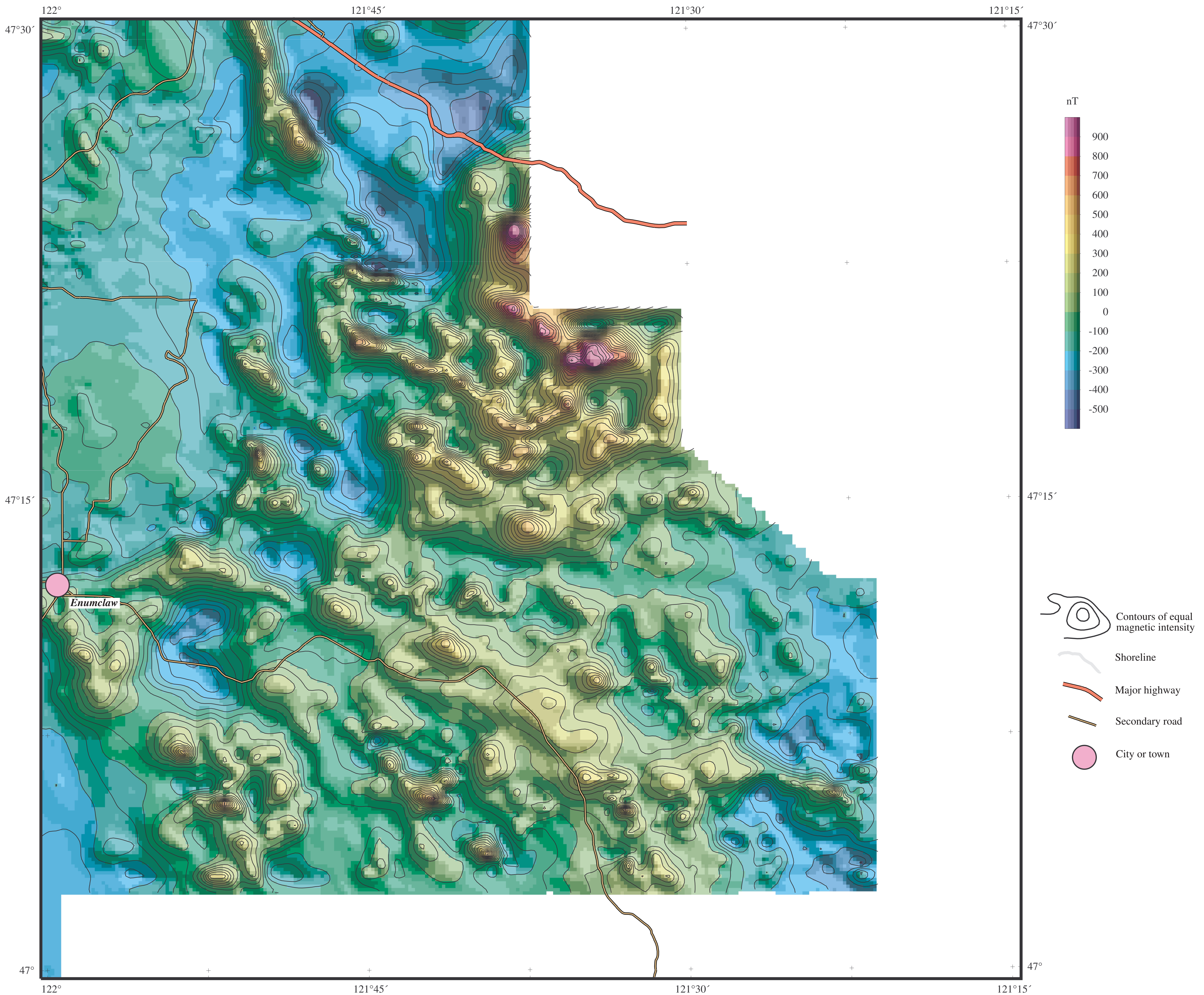


# Aeromagnetic Anomalies, Snoqualmie Pass Quadrangle



This map shows aeromagnetic anomalies of the Snoqualmie Pass, Washington, 30' by 60' quadrangle. The map is based on a 1997 aeromagnetic survey of the entire Puget Sound, described in U.S. Geological Survey Open-File Report 99-514 and available on the Internet at <http://geopubs.wr.usgs.gov/open-file/of99-514>. The digital version of this map was produced at 1:100,000 scale. Dimensional calibration may vary between electronic plotters and between X and Y directions on the same plotter, and paper may change size due to atmospheric conditions; therefore, scale and proportions may not be true on plots of this map.

0 5 10 15 20 25 KM