

1996 Survey

5a. Shaded Relief and Topography

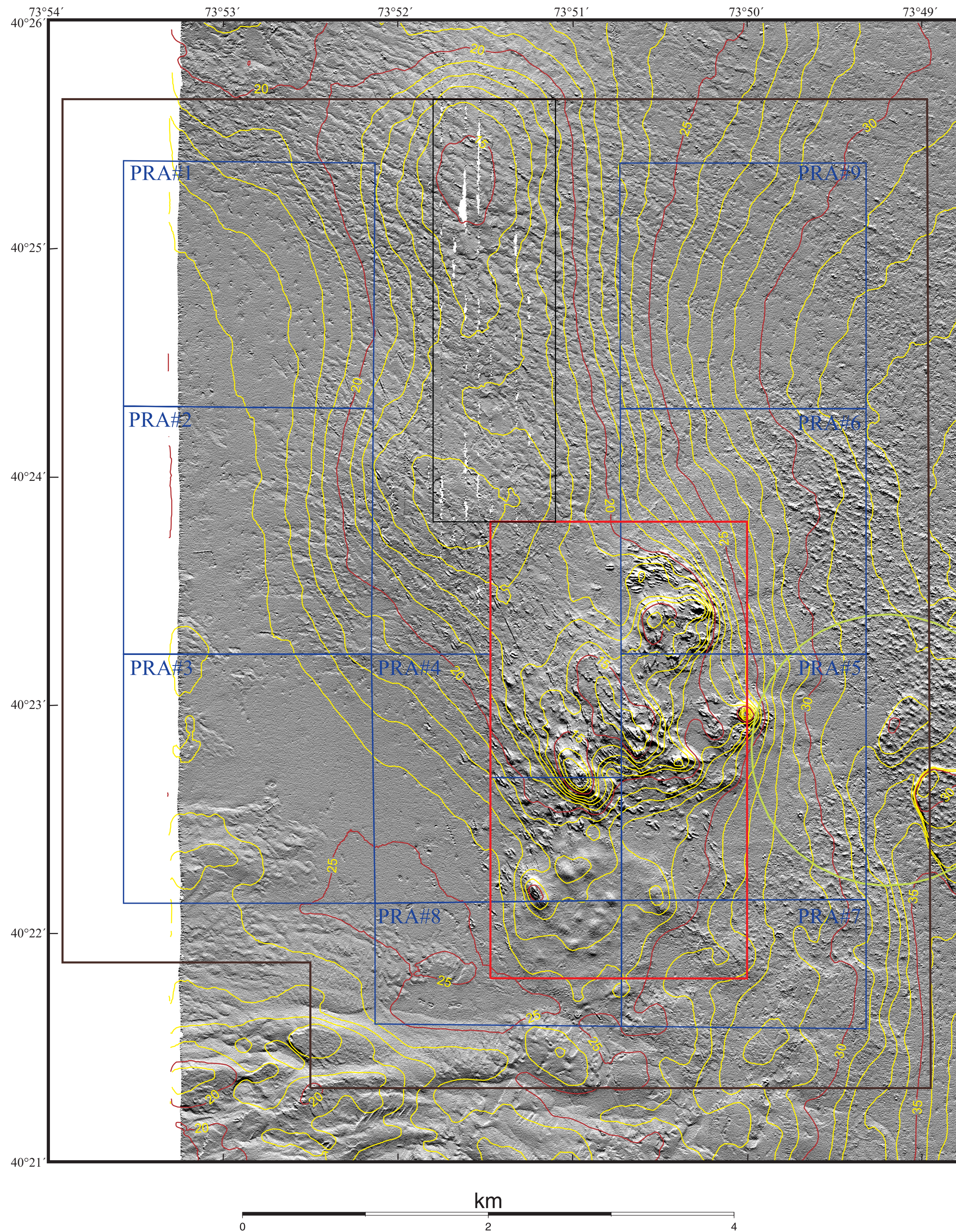


Figure 5a. Shaded relief and depth contours displayed at 1 m intervals for the 1996 survey. The boundaries of the Historic Area Remediation Site (brown), the Primary Remediation Area (divided into 9 cells outlined in blue), the Mud Dump Site (red), the no-discharge zone (black), and the western part of the Cellar Dirt Disposal Site (green) are also shown. White areas are areas of no data. See the Maps section of the text for a description of the how these images were created from the multibeam data.

Butman, Bradford, Danforth, W.W., Knowles, S.C., May, Brian, and Serrett, Laurie, 2002, Sea Floor Topography and Backscatter Intensity of the Historic Remediation Site (HARS), Offshore of New York, Based on Multibeam Surveys Conducted in 1996, 1998 and 2000, U.S. Geological Survey Open File Report 00-503. 1 DVD-ROM.