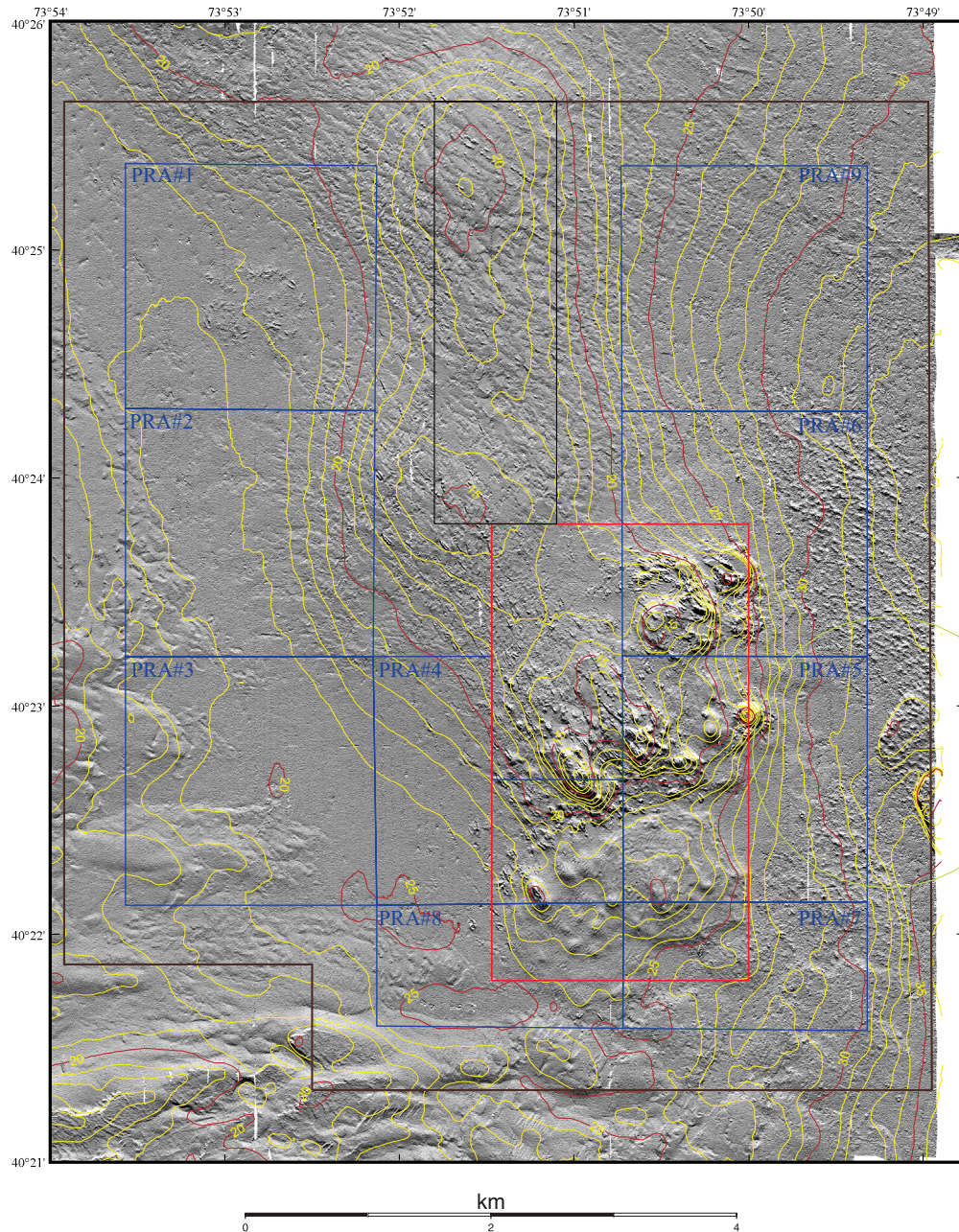


## 1998 Survey

### 6a. Shaded Relief and Topography



**Figure 6a.** Shaded relief and depth contours displayed at 1 m intervals for the 1998 survey. The boundaries of the Historic Area Remediation Site (brown), the Primary Remediation Area (divided into 9 cells outlined in blue), the Mud Dump Site (red), the no-discharge zone (black), and the Cellar Dirt Disposal Site (green) are also shown. White areas are areas of no data. Principal changes between 1996 and 1998 are the placement of new dredged material in the eastern part of the HARS, capping in the southern part (see circular feature centered near 40°22.25' N. and 73°50.45' W.), and remediation in PRA#1. See the Maps section of the text for a description of the how these images were created from the multibeam data.

Butman, Bradford, Danforth, W.W., Knowles, S.C., May, Brian, and Serrett, Laurie, 2002, Sea Floor Topography and Backscatter Intensity of the Historic Remediation Site (HARS), Offshore of New York, Based on Multibeam Surveys Conducted in 1996, 1998 and 2000, U.S. Geological Survey Open File Report 00-503. 1 DVD-ROM.