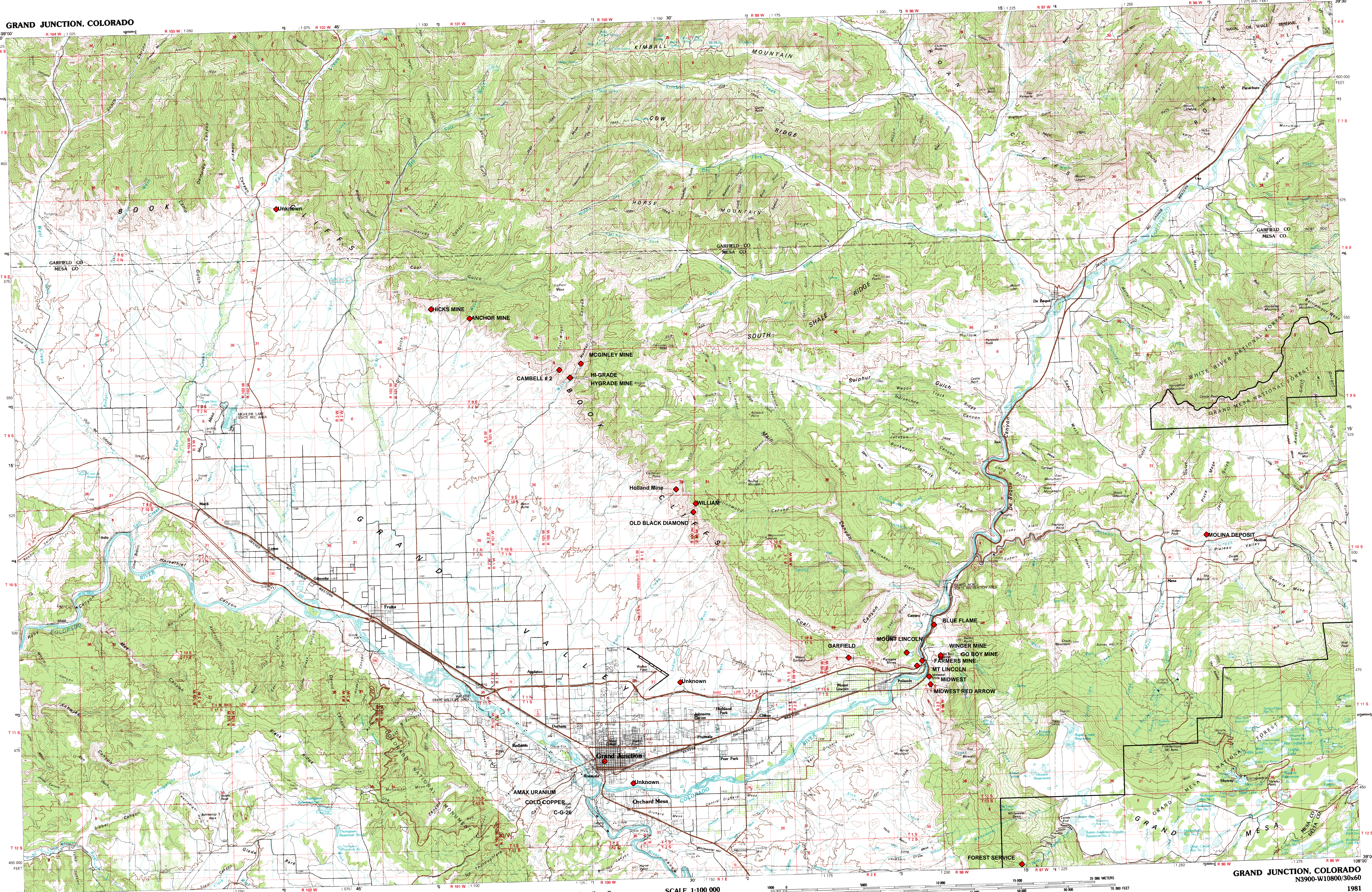
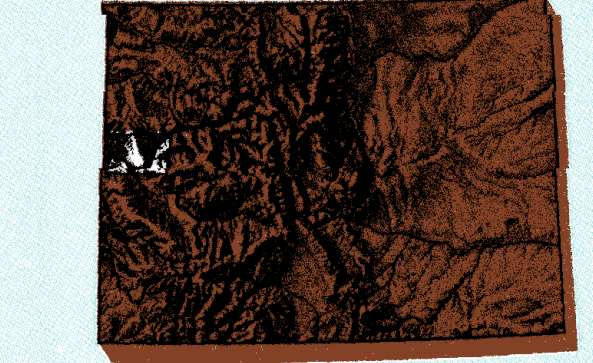


GRAND JUNCTION, COLORADO

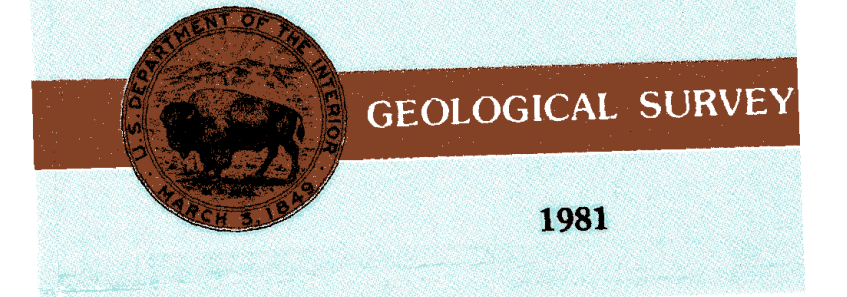
30X60 MINUTE SERIES (TOPOGRAPHIC)



1:100 000-scale metric topographic map of **Grand Junction COLORADO**



- 30 X 60 MINUTE QUADRANGLE SHOWING
- Contours and elevations in meters
 - Highways, roads and other manmade structures
 - Water features
 - Woodland areas
 - Geographic names



1981

Produced by the United States Geological Survey in cooperation with the Soil Conservation Service
 Compiled from 1:50,000-scale topographic maps dated 1955-1968. Partially revised from aerial photographs taken 1973, 1979 and other source data. Revised information not field checked.
 Map edited 1981.
 Projection and 10 000-meter grid, zone 12 Universal Transverse Mercator
 25 000-foot grid ticks based on Colorado coordinate system, central zone, 1927 North American datum
 The projection has a meters north and 57 meters east. Certain land lines are omitted because of insufficient data. There may be private inholdings within the boundaries of the National or State reservations shown on this map.
 CONTOUR INTERVAL: 50 METERS
 NATIONAL GEODETIC DATUM OF 1983

THIS MAP COMPLIES WITH NATIONAL MAP ACCURACY STANDARDS

CONVERSION TABLE		DECLINATION DIAGRAM		ADJOINING MAPS		
Meters	Feet	Magnetic Declination		1	2	3
1	3.28	N 10° 15' W		1	2	3
2	6.56	N 10° 15' W		4	5	6
3	9.84	N 10° 15' W		7	8	9
4	13.12	N 10° 15' W		10	11	12
5	16.40	N 10° 15' W		13	14	15
6	19.68	N 10° 15' W		16	17	18
7	22.96	N 10° 15' W		19	20	21
8	26.24	N 10° 15' W		22	23	24
9	29.52	N 10° 15' W		25	26	27
10	32.80	N 10° 15' W		28	29	30

FOR SALE BY U.S. GEOLOGICAL SURVEY, DENVER, COLORADO 80225 OR RESTON, VIRGINIA 22092

Topographic Map Symbols

- Primary highway, hard surface
- Secondary highway, hard surface
- Light duty road, original street, hard or improved surface
- Open road or street, soft
- Road marker: Interstate, U.S. State
- Roadway standard gaps, narrow gaps
- Bridge: suspension, cantilever
- Tunnel: road, railroad
- Built up area, locality, elevation
- Asympt. building, building, range
- National boundary
- State boundary
- County boundary
- National or State reservation boundary
- Local grant boundary
- U.S. public lands survey: range, township, section
- Range, township, section line: protected
- Power transmission line: pipeline
- Canal, dam with lock
- Cemetery, building
- Wetland, water well, spring
- Shore: beach, reef or rock, river, quarry, gravel pit
- Compartment, picnic area, U.S. location monument
- Ruins: cliff dwelling
- Disturbed surface: strip, tree, tree, stand
- Contours: index, intermediate, supplementary
- Hydrographic contours: index, intermediate
- Stream, lake, perennial, intermittent
- Rapids, large and small; falls, large and small
- Area to be submerged: marsh, swampland
- Land subject to controlled reclamation: woodshed
- Scrub, mangrove
- Orchard, vineyard

A complete glossary of topographic terms is available on request.

SCALE 1:100 000
 1 CENTIMETER ON THE MAP REPRESENTS 1 KILOMETER ON THE GROUND
 CONTOUR INTERVAL: 50 METERS

GRAND JUNCTION, COLORADO
 N3900-W10800/30x60
 1981