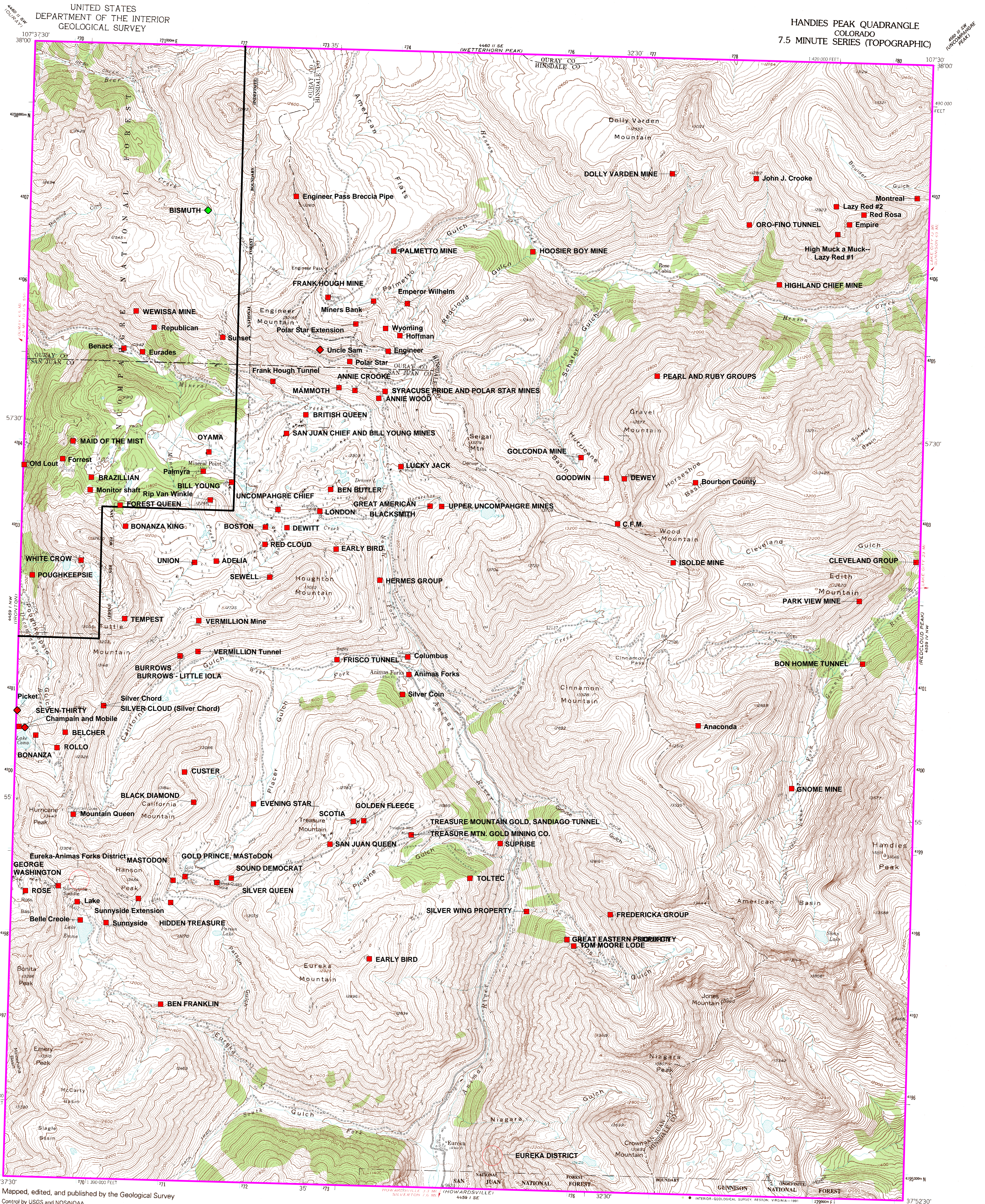


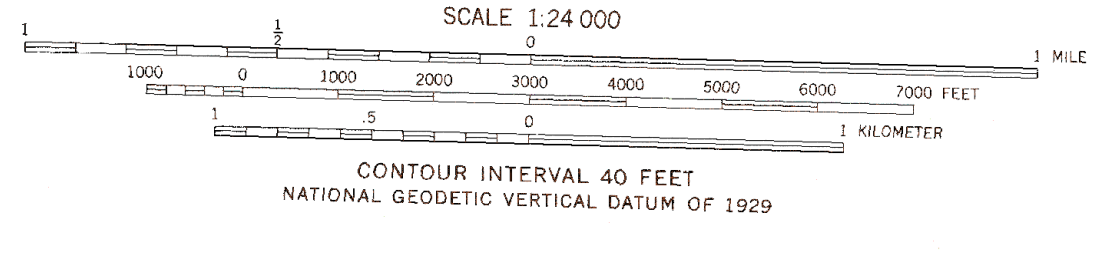
Inset - Handies Peak

HANDIES PEAK QUADRANGLE
COLORADO
7.5 MINUTE SERIES (TOPOGRAPHIC)



Mapped, edited, and published by the Geological Survey
Control by USGS and NOS/NOAA
Topography from aerial photographs by multiplex methods
Aerial photographs taken 1951. Field checked 1955
Polyconic projection. 1927 North American Datum
10,000-foot grid based on Colorado coordinate system,
south zone
1000-meter Universal Transverse Mercator grid ticks, zone 13,
shown in blue
The difference between 1927 North American Datum and North
American Datum of 1983 (NAD 83) for 7.5 minute intersections is
given in USGS Bulletin 1875. The NAD 83 is shown by dashed
corner ticks
Land lines within this quadrangle (Tps. 42 and 43 N. and
Rs. 6 and 7W) are omitted because of alleged fraud or
defects in the surveys

Unchecked elevations are shown in brown
There may be private inholdings within the boundaries of
the National or State reservations shown on this map



ROAD CLASSIFICATION
Light-duty Unimproved dirt - - - - -

HANDIES PEAK, COLO.
37107-H5-TF-024
1955
PHOTOINSPECTED 1975
DMA 4459 I NE-SERIES 1877

THIS MAP COMPLIES WITH NATIONAL MAP ACCURACY STANDARDS
FOR SALE BY U. S. GEOLOGICAL SURVEY, DENVER, COLORADO 80225, OR RESTON, VIRGINIA 22092
A FOLDER DESCRIBING TOPOGRAPHIC MAPS AND SYMBOLS IS AVAILABLE ON REQUEST

Map photoinspected 1975
No major culture or drainage changes observed