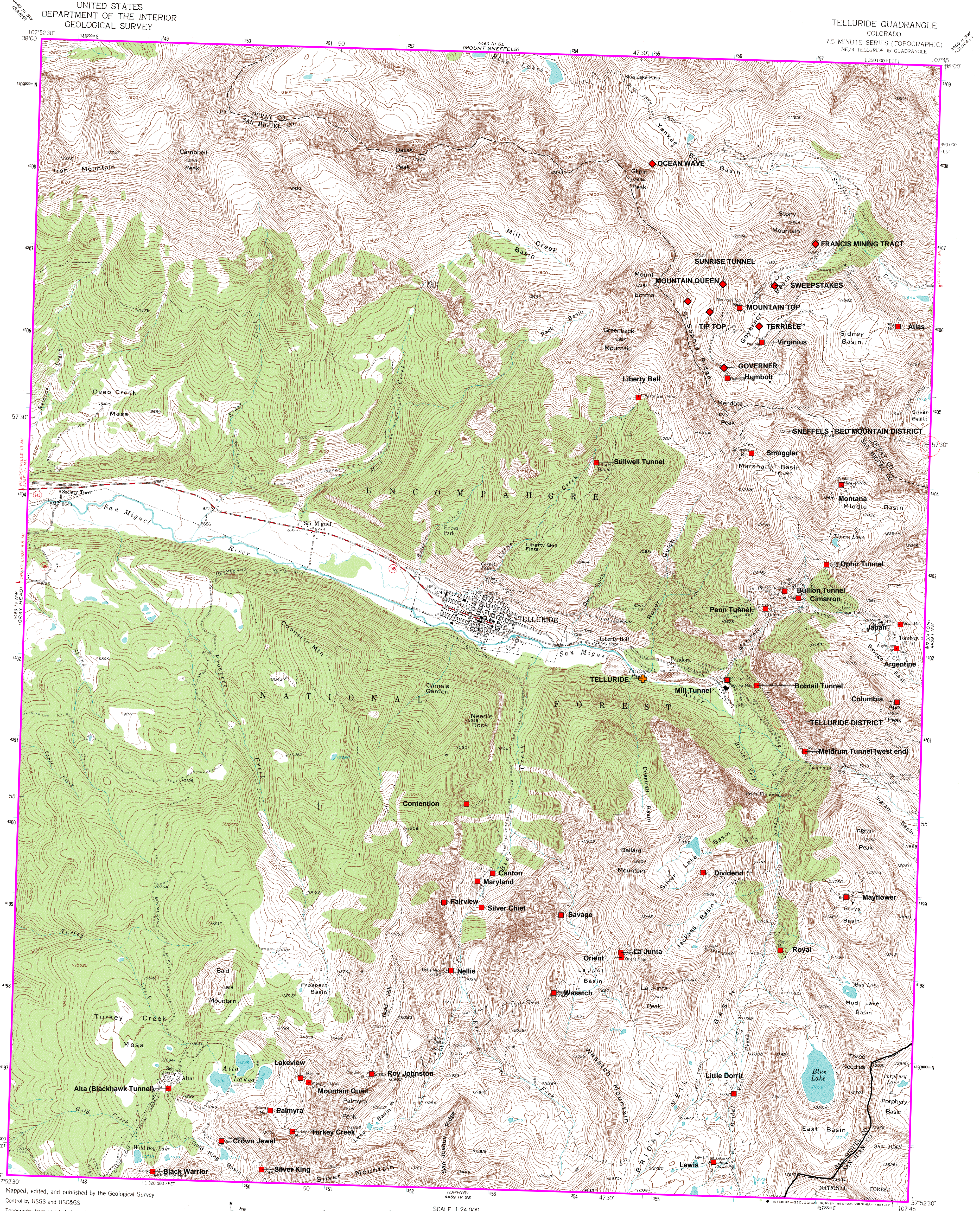


Inset - Telluride

UNITED STATES
DEPARTMENT OF THE INTERIOR
GEOLOGICAL SURVEY

TELLURIDE QUADRANGLE
COLORADO
7.5 MINUTE SERIES (TOPOGRAPHIC)
NE/4 TELLURIDE 15 QUADRANGLE
1:350,000 FEET

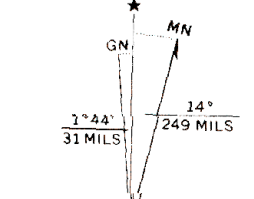


Mapped, edited, and published by the Geological Survey
Control by USGS and USC&GS

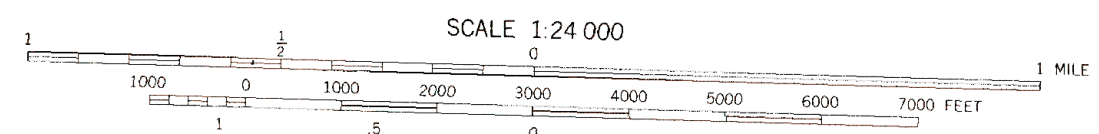
Topography from aerial photographs by multiplex methods
Aerial photographs taken 1951-1952. Field check 1955
Photocentric projection. 1927 North American datum
10,000-foot grid based on Colorado coordinate system,
south zone

Land lines are omitted in T_s 42 and 43 N. R. 5 W. because of
insufficient data and are omitted in T_s 42 and 43 N. R. 8 W.
because of alleged fraud or defects in the surveys.
Unchecked elevations are shown in brown

1000-meter Universal Transverse Mercator grid ticks,
zone 13, shown in blue.

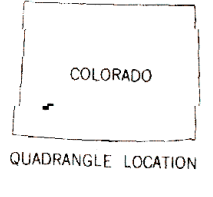


UTM GRID AND 1983 MAGNETIC NORTH
DECLINATION AT CENTER OF SHEET
To place on the predicted North American Datum 1983
move the projection lines 4 meters north and
55 meters east as shown by dashed corner ticks
There may be private inholdings within the boundaries of
the National or State reservations shown on this map



CONTOUR INTERVAL 40 FEET
NATIONAL GEODETIC VERTICAL DATUM OF 1929

THIS MAP COMPLIES WITH NATIONAL MAP ACCURACY STANDARDS
FOR SALE BY U. S. GEOLOGICAL SURVEY, DENVER, COLORADO 80225, OR RESTON, VIRGINIA 22092
A FOLDER DESCRIBING TOPOGRAPHIC MAPS AND SYMBOLS IS AVAILABLE ON REQUEST



ROAD CLASSIFICATION
Medium duty ——— Light duty ———
Unimproved dirt ———
State Route ———

TELLURIDE, COLO.
NE/4 TELLURIDE 15 QUADRANGLE
N3752.5—W10745.7/5
1955
DMA 4459 IV NE—SERIES V877