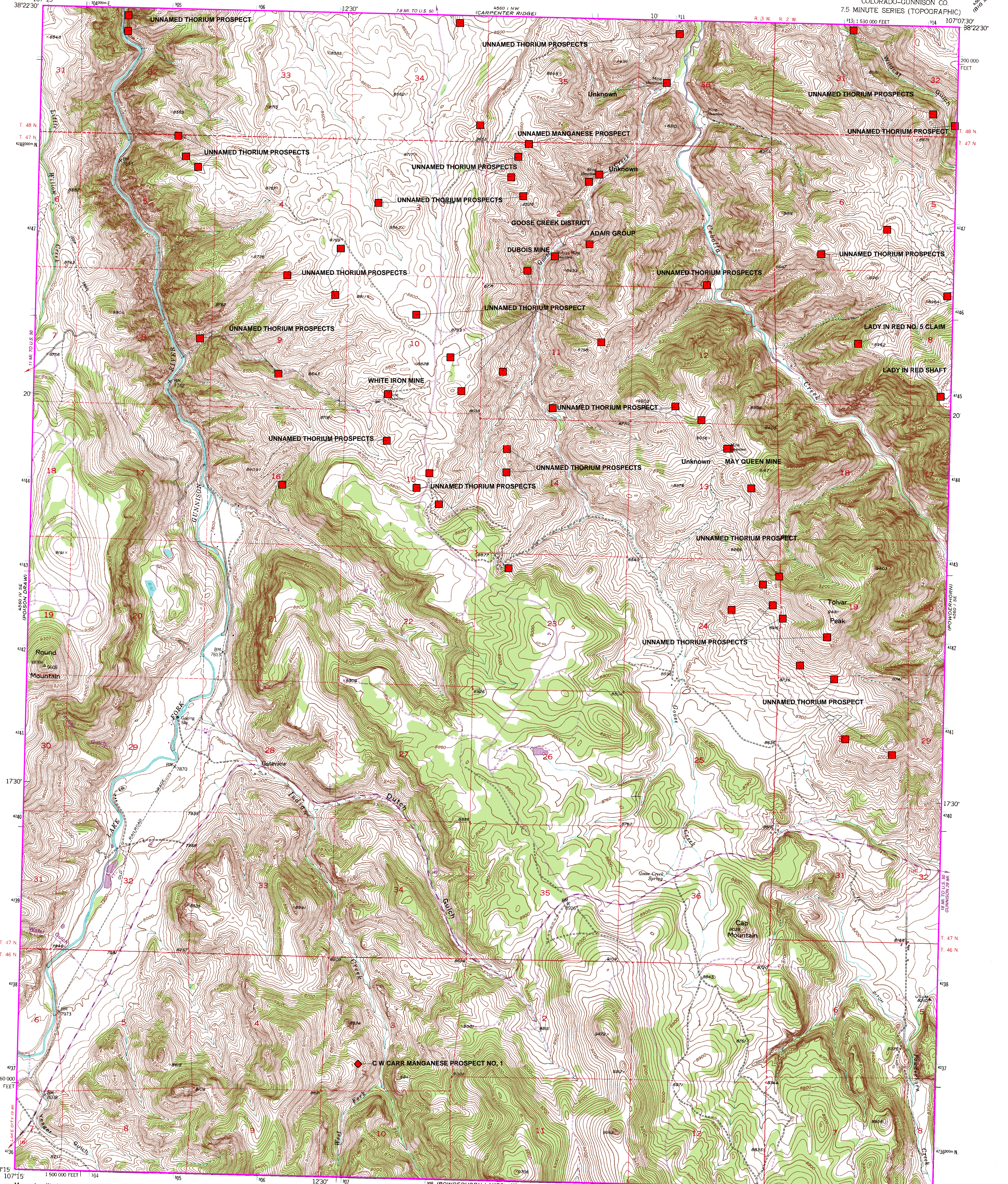


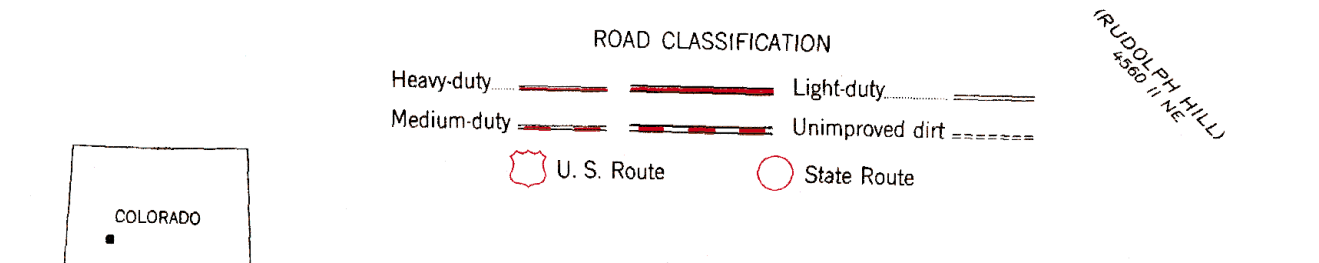
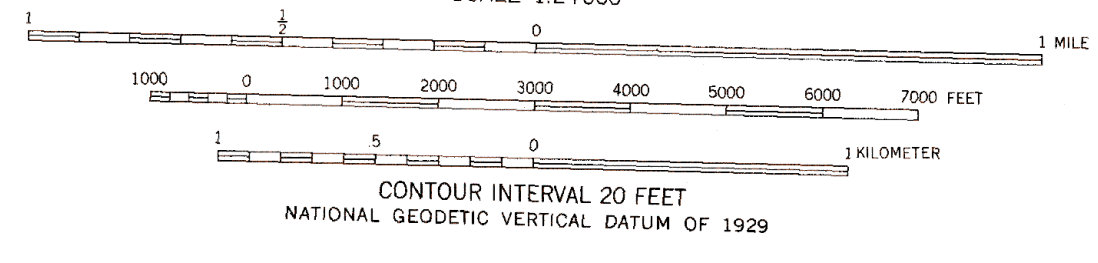
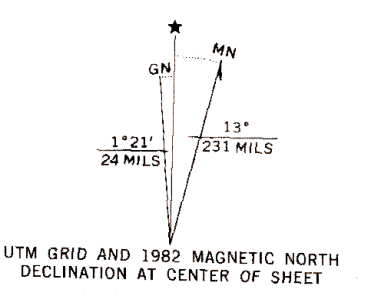
Inset Map-Gateview

UNITED STATES
DEPARTMENT OF THE INTERIOR
GEOLOGICAL SURVEY

GATEVIEW QUADRANGLE
COLORADO-GUNNISON CO.
7.5 MINUTE SERIES (TOPOGRAPHIC)



Mapped, edited, and published by the Geological Survey
Control by USGS and NOS/NOAA
Topography from aerial photographs by photogrammetric methods
Aerial photographs taken 1950. Field check 1954
Polyconic projection, 1927 North American Datum
10,000-foot grid based on Colorado coordinate system,
central zone
Dashed land lines indicate approximate locations
1000-meter Universal Transverse Mercator grid ticks,
zone 13, shown in blue
To place on the predicted North American Datum 1983
move the projection lines 4 meters north and
54 meters east as shown by dashed corner ticks



THIS MAP COMPLIES WITH NATIONAL MAP ACCURACY STANDARDS
FOR SALE BY U. S. GEOLOGICAL SURVEY, DENVER, COLORADO 80225, OR RESTON, VIRGINIA 22092
A FOLDER DESCRIBING TOPOGRAPHIC MAPS AND SYMBOLS IS AVAILABLE ON REQUEST

Revisions shown in purple and woodland compiled from
aerial photographs taken 1978 and other source data
This information not field checked. Map edited 1982

GATEVIEW, COLO.
38107-C2-TF-024
1954
PHOTOREVISED 1982
DMA 4560 I SW-SERIES V877