

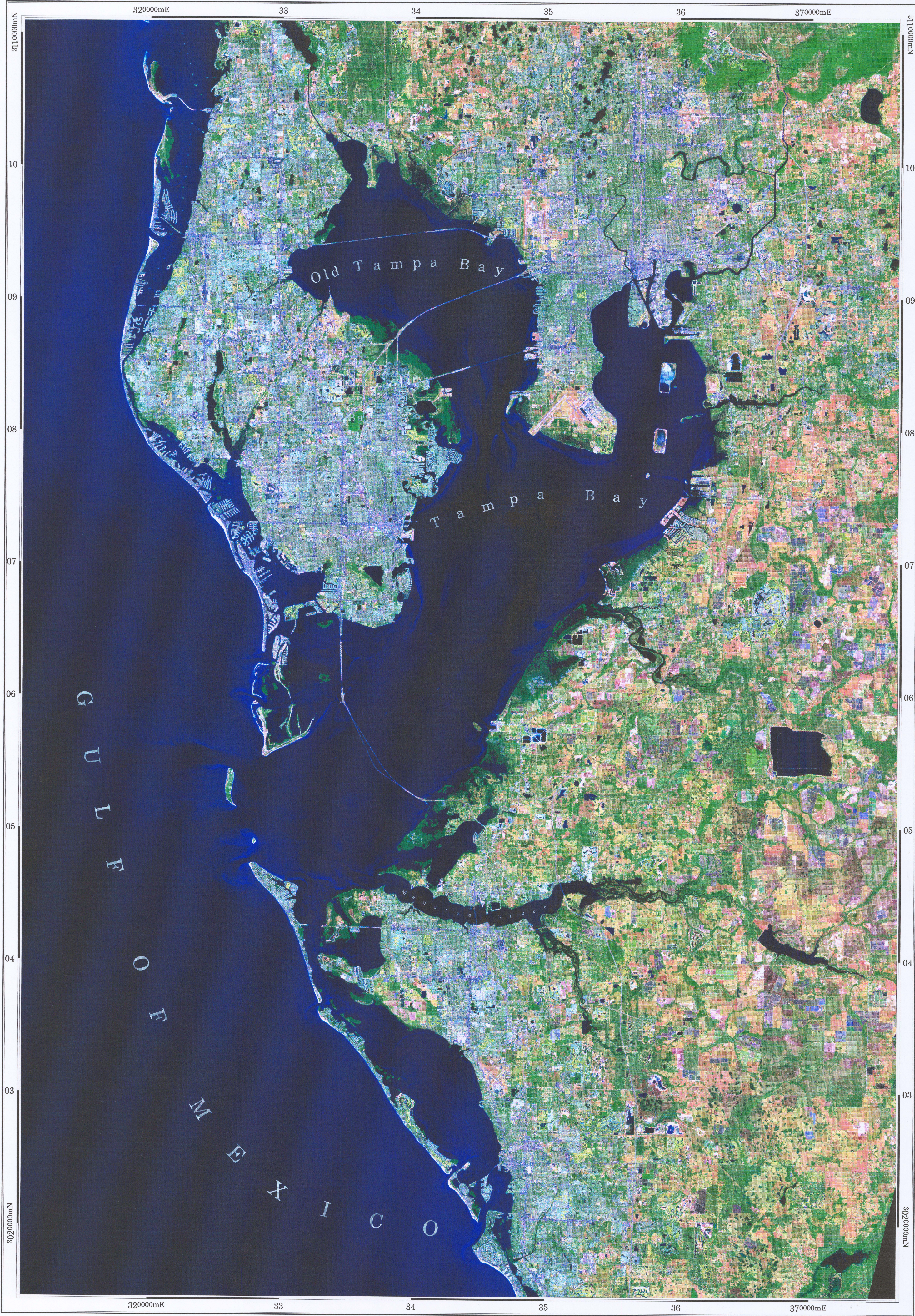
# Tampa Bay, Florida

March 22, 1991

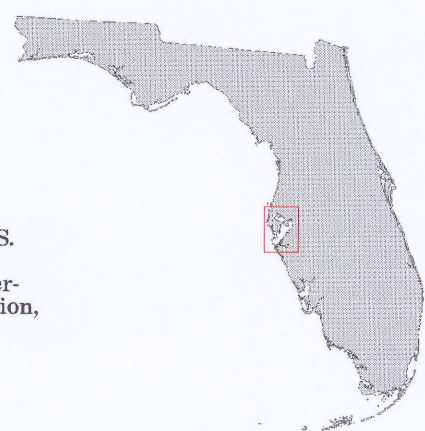
OPEN-FILE REPORT 01-9



m(200)  
R290  
no. 8001-9  
c. 2



U.S. DEPARTMENT OF INTERIOR  
U.S. GEOLOGICAL SURVEY  
Center for Coastal Geology  
600 4th Street South  
St. Petersburg, FL 33701



SCALE 1:110,000

5 0 5 10 KILOMETRES

2.5 0 2.5 5 7.5 10 MILES



Source: Eros Data Center, Sioux Falls, S.D.  
Projection: UTM Zone 17 Row R  
Datum: WGS 84  
Ellipsoid: WGS 84



U.S. GEOLOGICAL SURVEY  
APR 18 2001  
RESTON, VA

Subset of pre-processed Landsat Thematic Mapper (TM) satellite imagery, Bands 5, 4, 2 (RGB). See USGS Open-File Report 97-287 (Raabe and Stumpf, 1997) for details of processing methods.

This poster has been prepared for educational purposes. Colors are near natural. Water and swampy areas are blue-black. Healthy plant growth is green. Agricultural fields and areas with low plant growth are pink or beige. Highways, parking lots, and other black surfaces are purple. Beach sand, cleared land, and cement are white or light blue.

m(200)  
R290  
no. 8001-9  
c. 2