

BOREHOLE RECORD			CASING RECORD		
BIT SIZE	FROM	TO	SIZE/WGT	FROM	TO
8"	SURF	82'	6"	SURF	82'
5.73"	82'	1797'	4"	SURF	1797'
3.8"	1797'	ID			

<p>COMMENTS:</p> <p>WELL WAS DRILLED AND LOGGED IN THREE STAGES</p> <p>STAGE 1 = SURF TO 562' ON 3-24-99</p> <p>STAGE 2 = 550' TO 1797' ON 3-31-99</p> <p>STAGE 3 = 1797' TO 2256' ON 4-6-99</p> <p>NA = NOT AVAILABLE</p>	<p>COMMENTS:</p> <p>STAGE 1 WAS DRILLED TO 1882', BUT THE WELL COLLAPSED AT 562'.</p> <p>1800 TO 1860 FEET LOGGED THROUGH DRILL RODS DUE TO UNSTABLE BOREHOLE CONDITIONS.</p>
--	---

DIGITAL FILES: DMNH-1.DAT, DMNH-1R.DAT

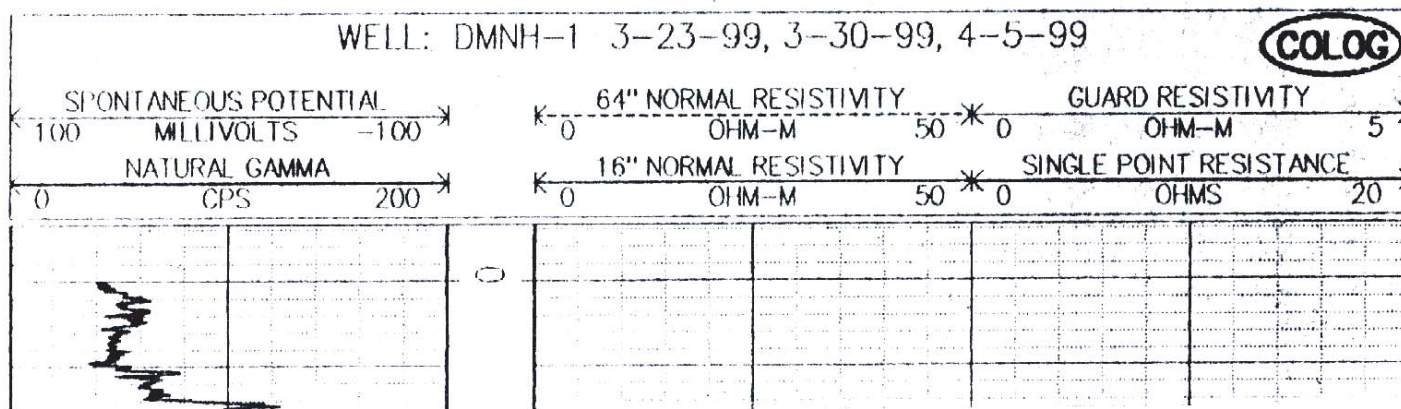


Plate 1 Electric and gamma logs from the Kiowa #1 well (page 2 of 6)