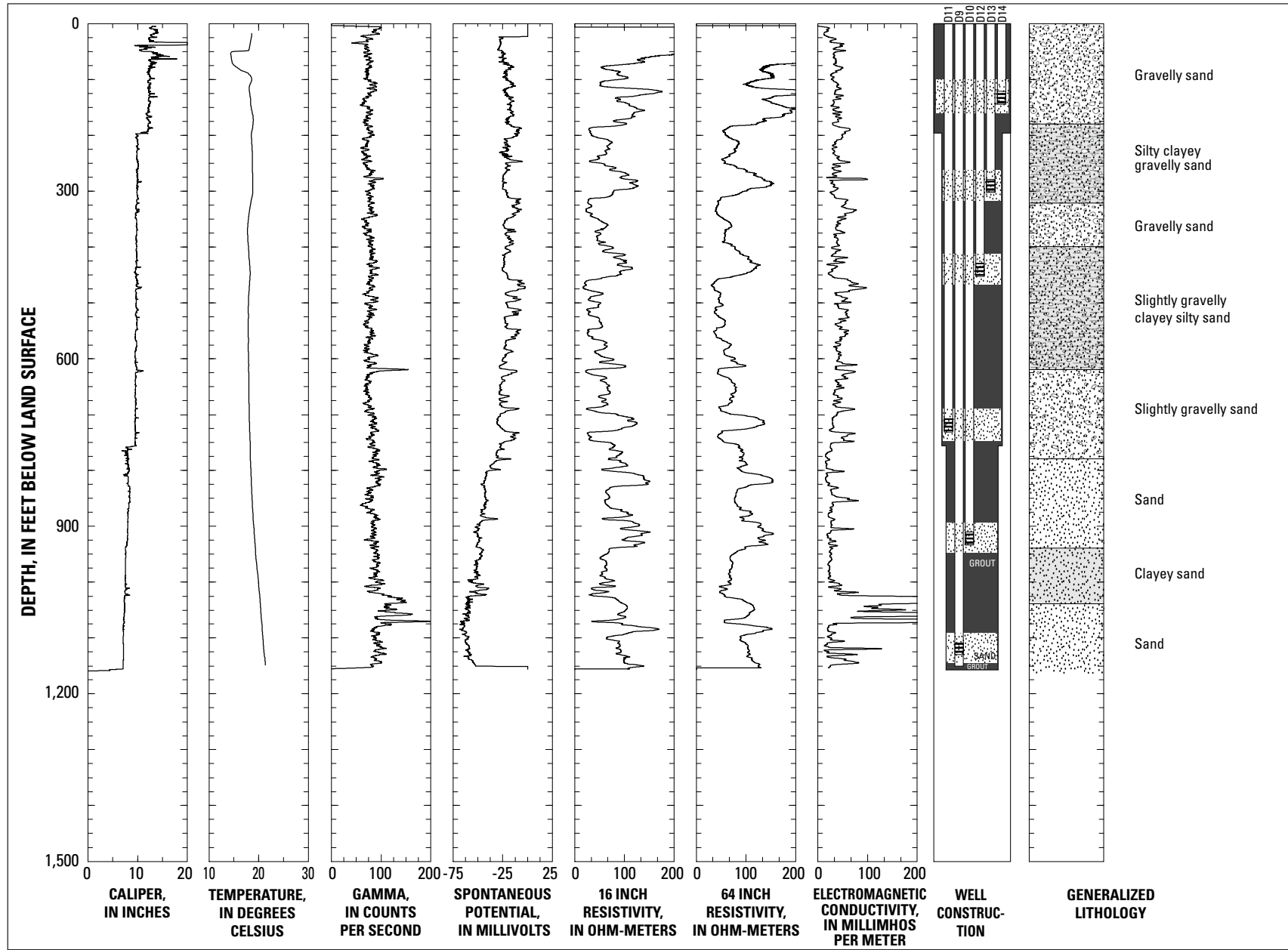
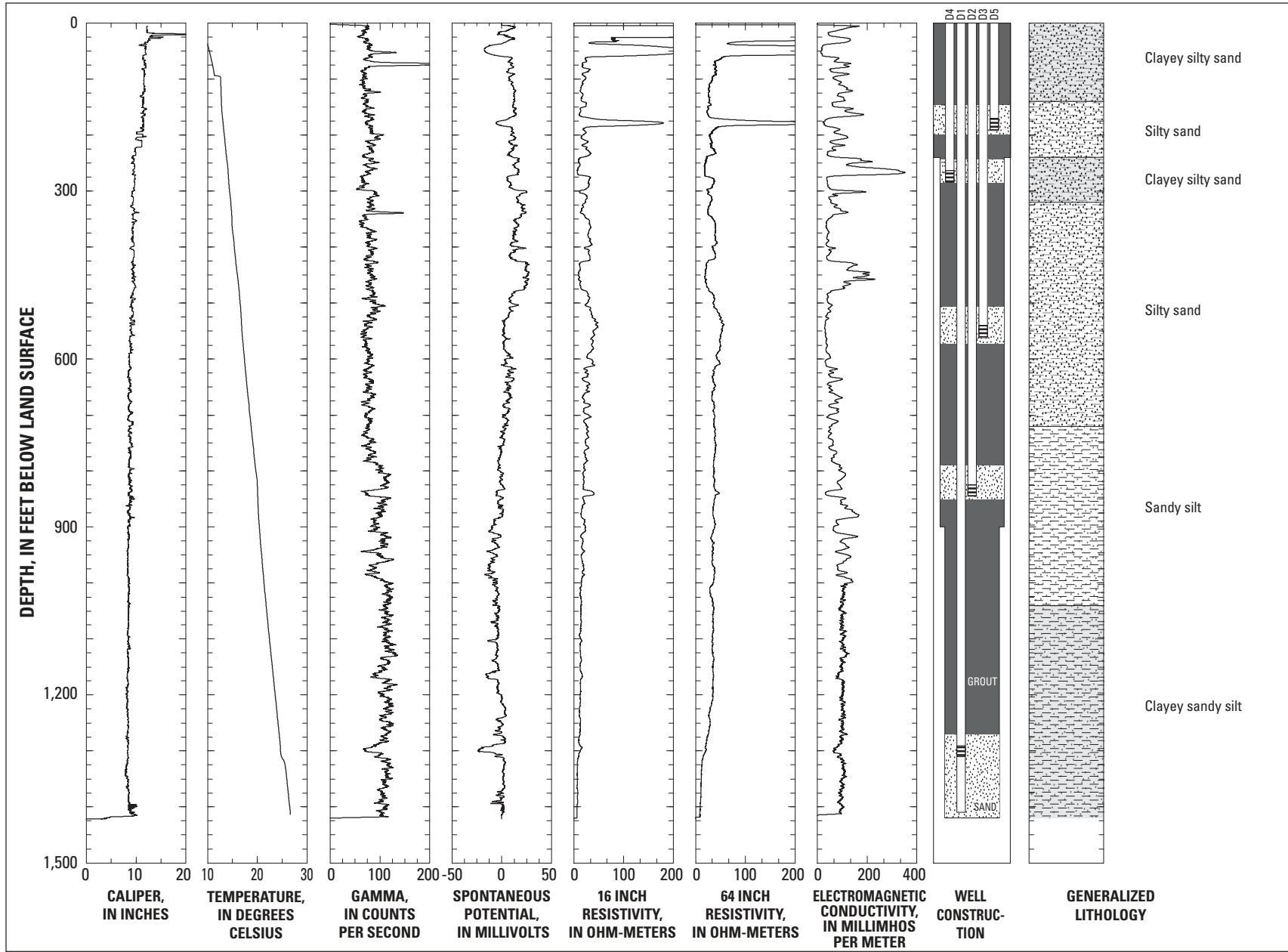


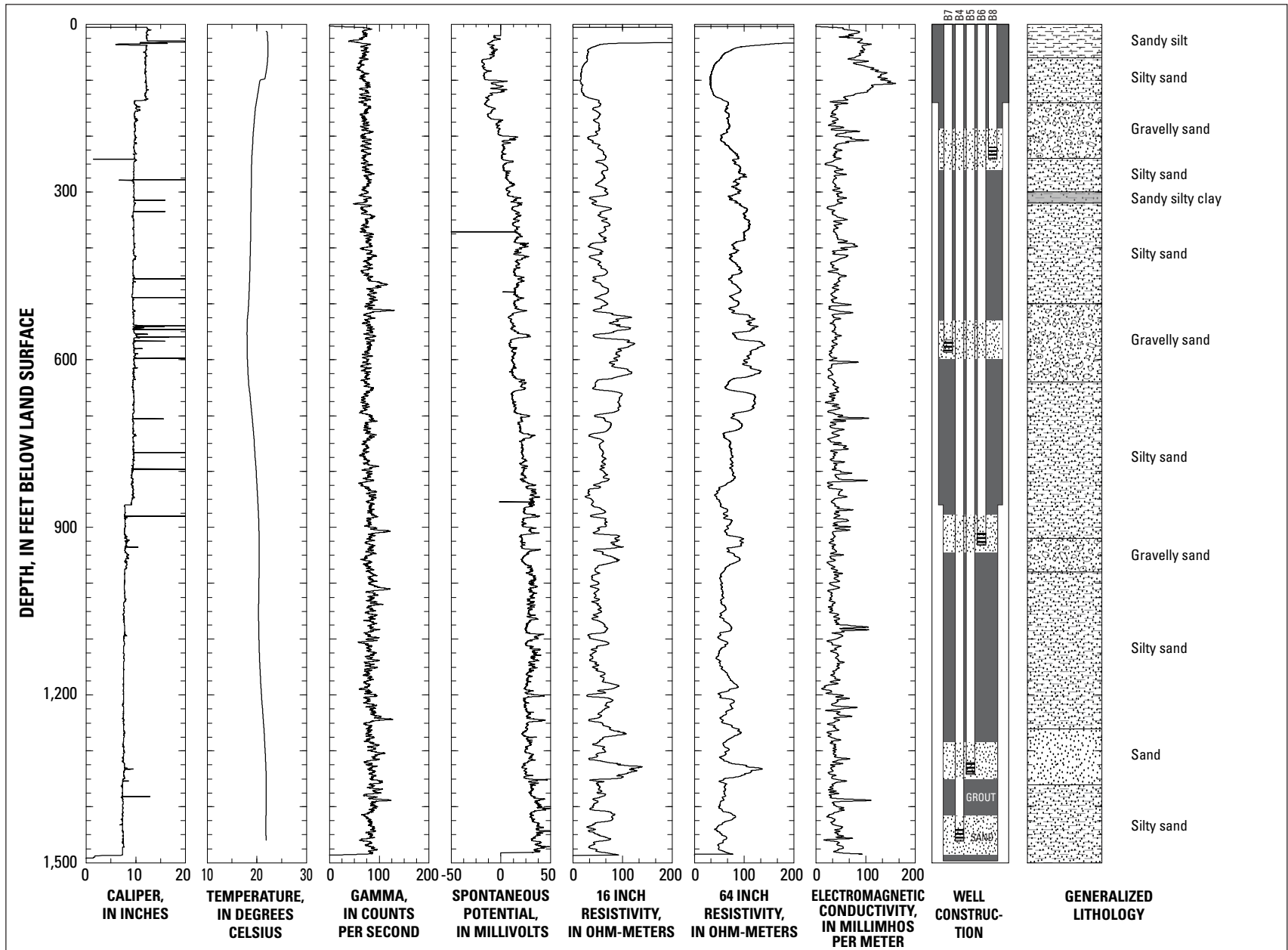
Figure 19. Geophysical logs, well-construction diagram, and generalized lithologic description for multiple-well monitoring site PICO RIVERA-2 (2S/12W-25G3-8), Los Angeles County, California.



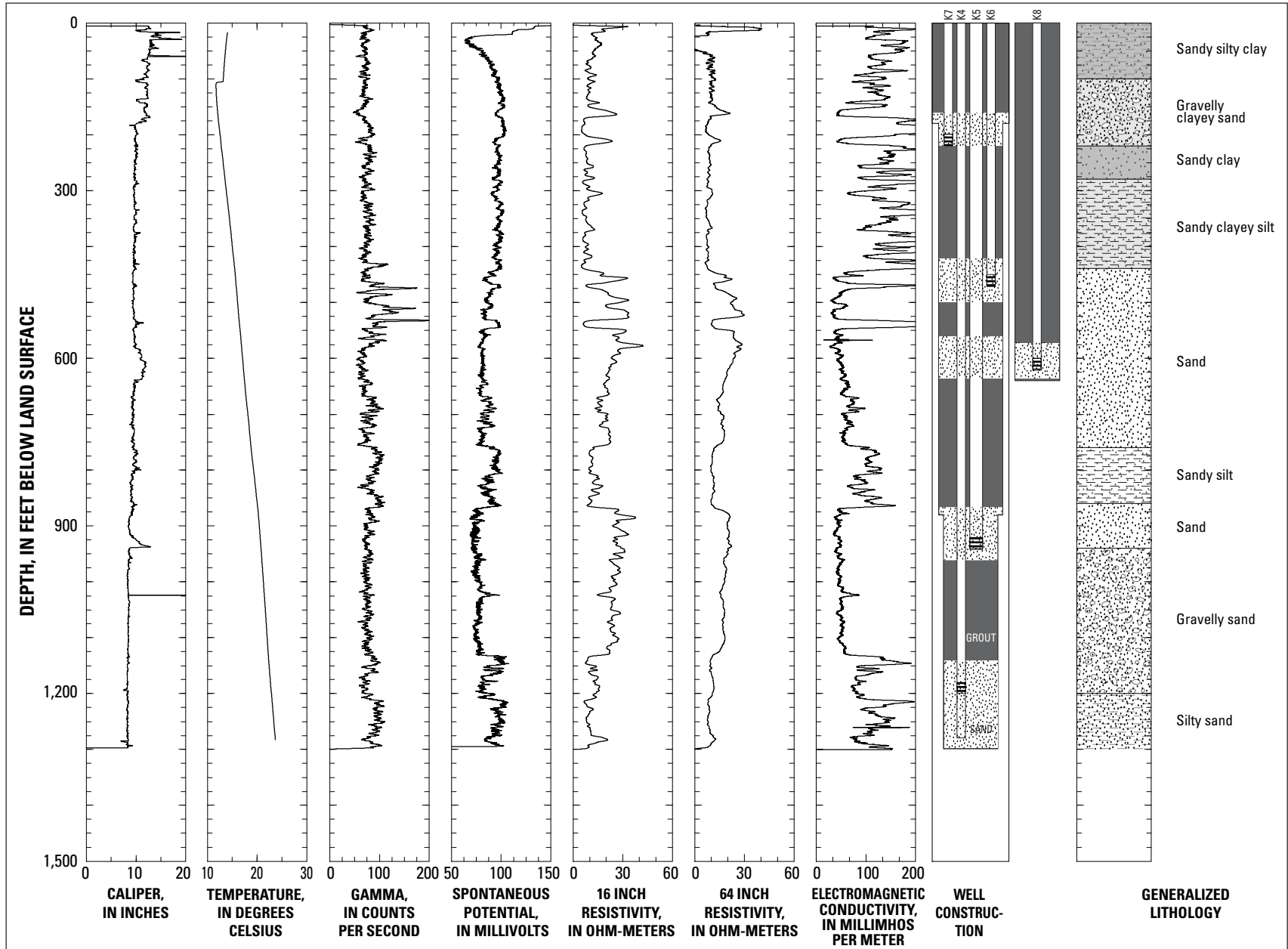
**Figure 20.** Geophysical logs, well-construction diagram, and generalized lithologic description for multiple-well monitoring site RIO HONDO-1 (2S/12W-26D9-14), Los Angeles County, California.



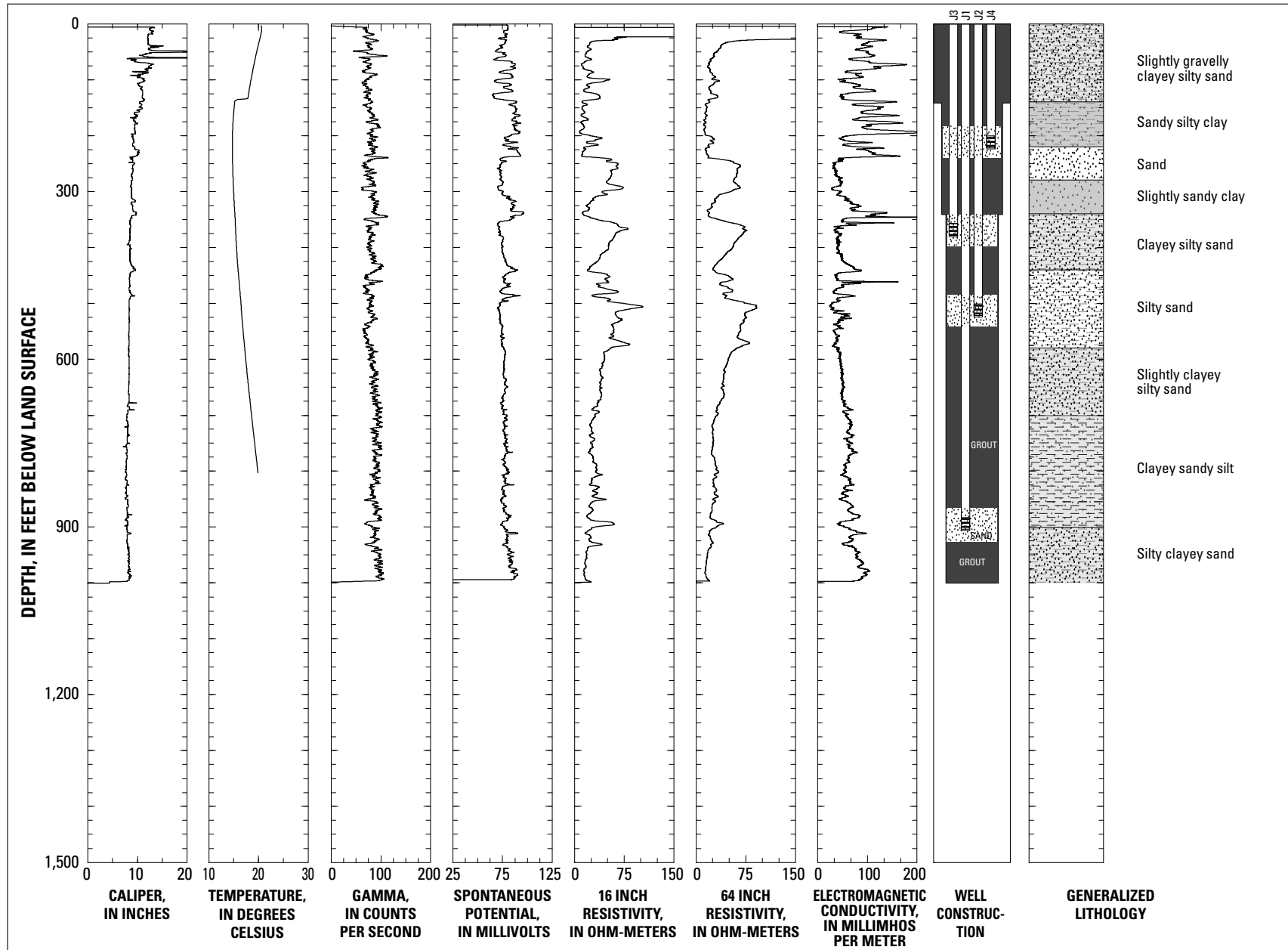
**Figure 21.** Geophysical logs, well-construction diagram, and generalized lithologic description for multiple-well monitoring site SANTA FE SPRINGS-1 (3S/11W-9D1-5), Los Angeles County, California.



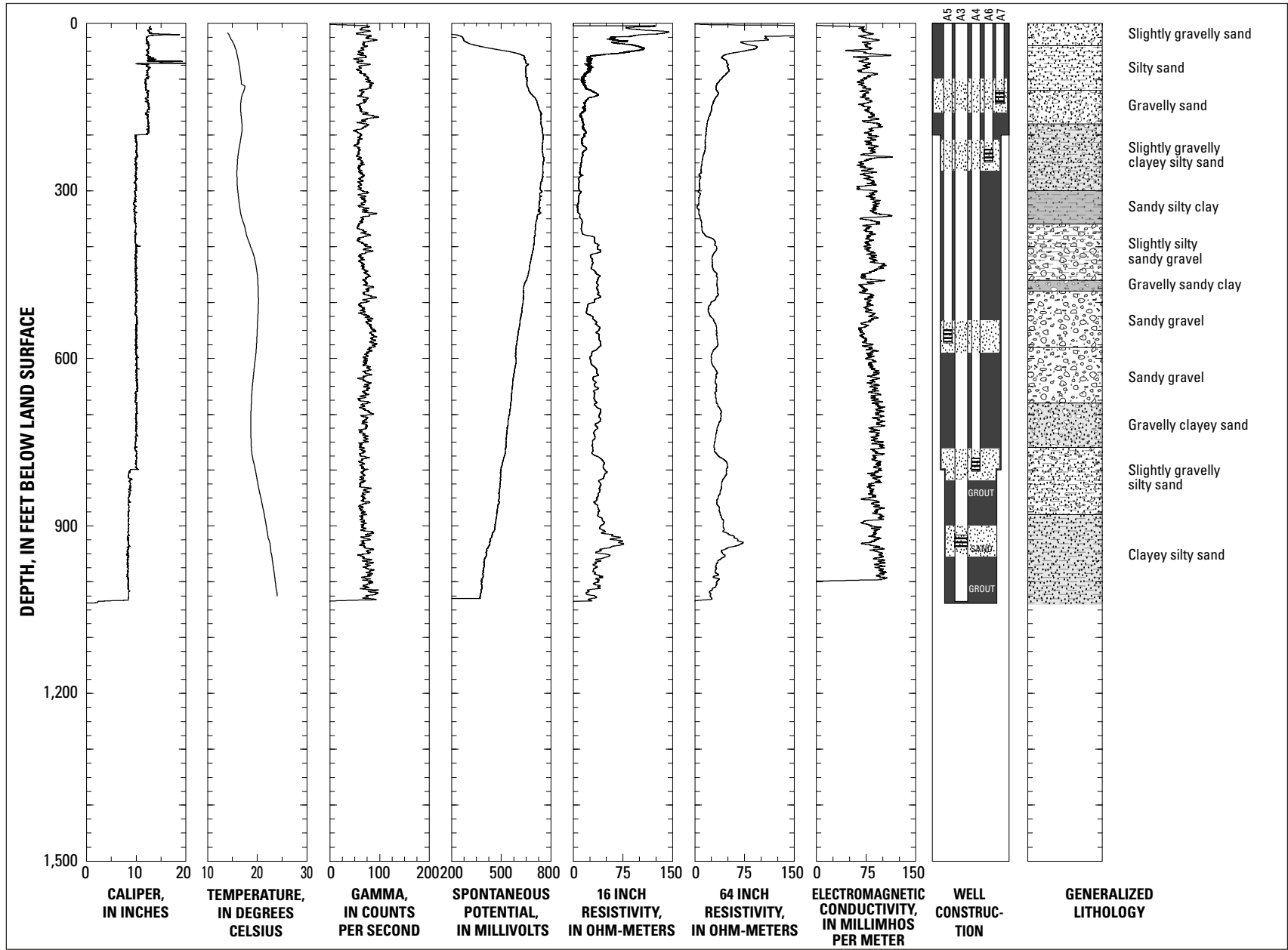
**Figure 22.** Geophysical logs, well-construction diagram, and generalized lithologic description for multiple-well monitoring site SOUTH GATE-1 (3S/12W-6B4-8), Los Angeles County, California.



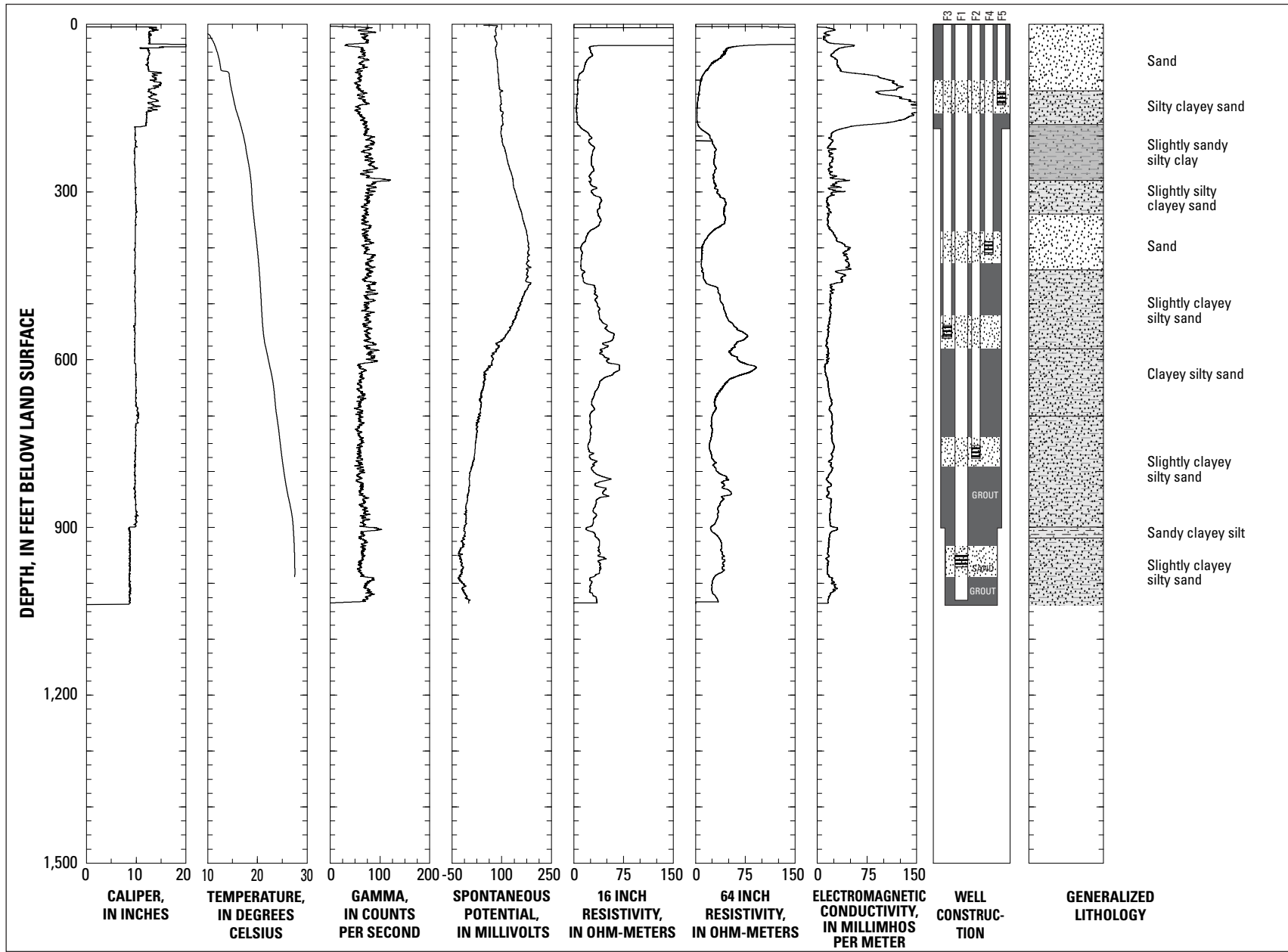
**Figure 23.** Geophysical logs, well-construction diagram, and generalized lithologic description for multiple-well monitoring site WHITTIER-1 (3S/11W-2K4-8), Los Angeles County, California.



**Figure 24.** Geophysical logs, well-construction diagram, and generalized lithologic description for multiple-well monitoring site WILLOWBROOK-1 (3S/13W-8J1-4), Los Angeles County, California.



**Figure 25.** Geophysical logs, well-construction diagram, and generalized lithologic description for multiple-well monitoring site WILMINGTON-1 (4S/13W-28A3-7), Los Angeles County, California.



**Figure 26.** Geophysical logs, well-construction diagram, and generalized lithologic description for multiple-well monitoring site WILMINGTON-2 (4S/13W-32F1-5), Los Angeles County, California.



**This page left blank intentionally**