

Geopulse Boomer Profile 14

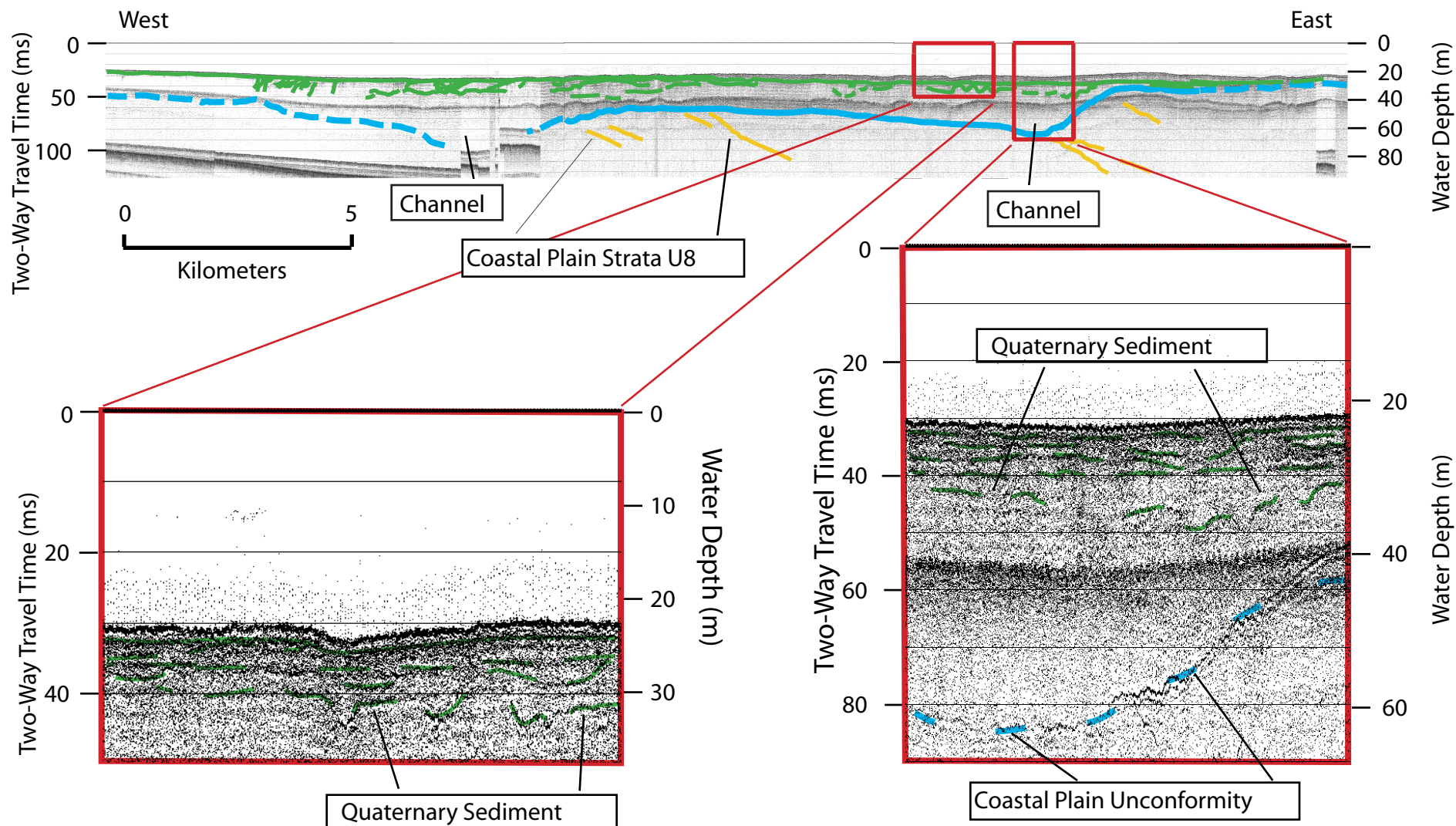


Figure 12. Representative seismic-reflection profile (cruise 95007) showing the coastal -plain unconformity and the overlying Quaternary sedimentary deposits. Note the two filled channels cut into the Cretaceous coastal-plain strata. See Figure 2b for location. Water Depth was calculated assuming a velocity of 1500 m/sec.