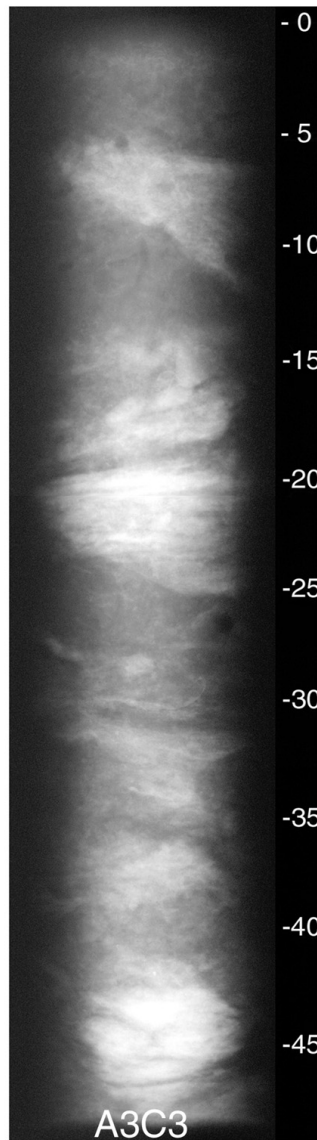
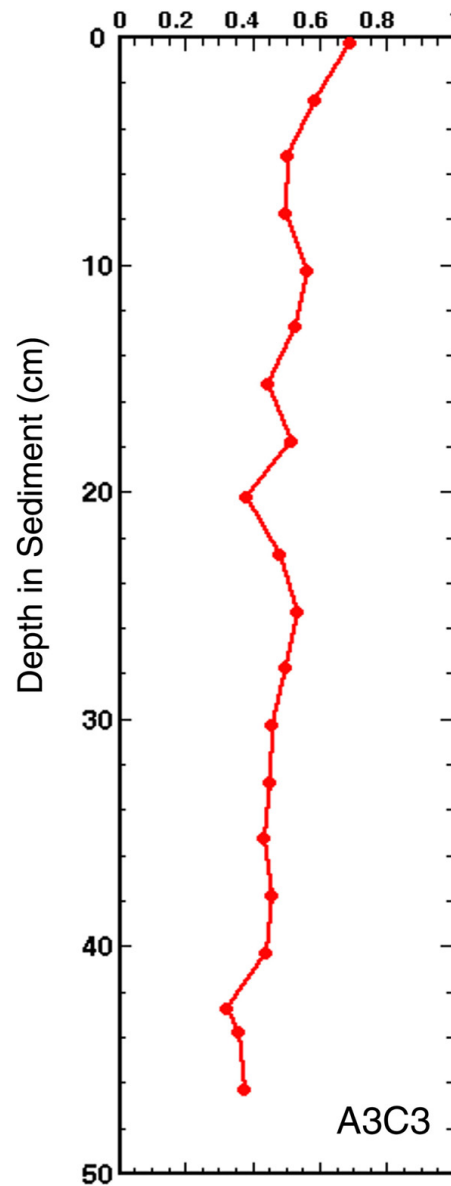


## X-radiograph



## Water Content (weight fraction)



Core A3C3 was taken on June 18, 1996 in 18 meters of water. The core measured 48 cm in length, was x-rayed on June 26, 1996 and was subsampled on October 15, 1996 at 0.5 cm intervals down the whole core. Features noted are seen in the x-ray and water content profiles above and include slightly mottled sediment, angled wispy sand layering, and some biological features such as small shells. No textural analysis is intended for this core.