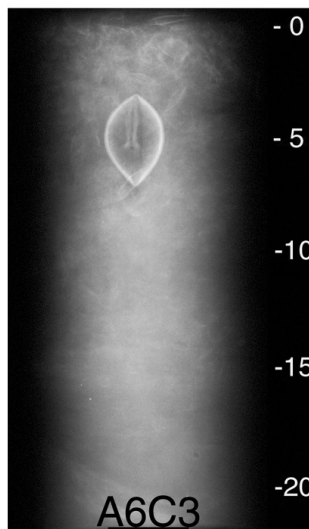
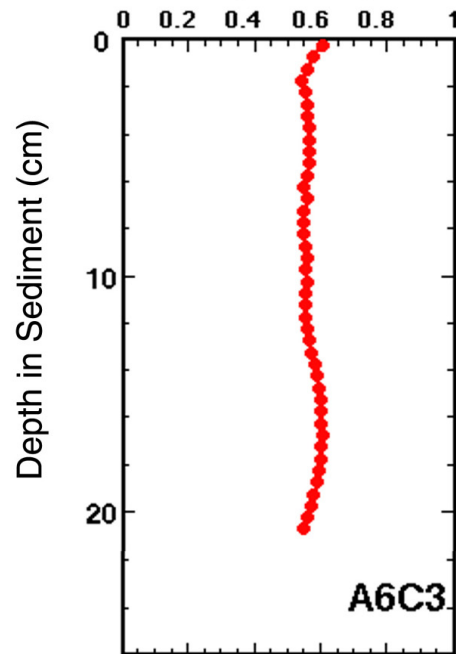


X-radiograph



Water Content (weight fraction)



Core A6C3 was taken on June 18, 1996 in 19 meters of water. The core measured 22 cm in length, was x-rayed on June 26, 1996 and was subsampled on May 20, 1997 at 0.5 cm intervals down the whole core. Features noted are seen in the x-ray and water content profiles above and include mottled sediment, a wispy sand deposit near the bottom of the core, and biological features such as shells. No textural analysis is intended for this core.