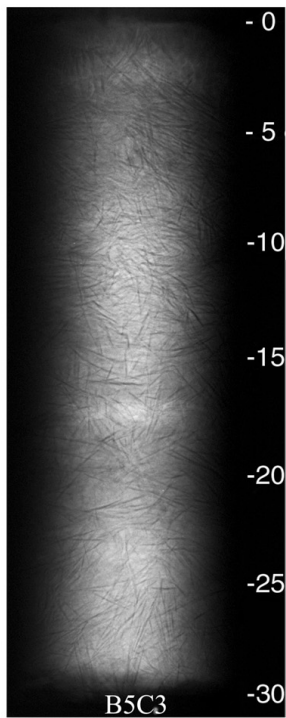
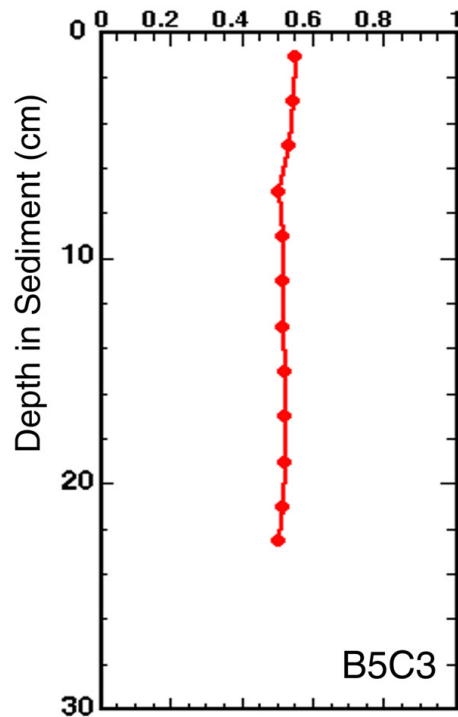


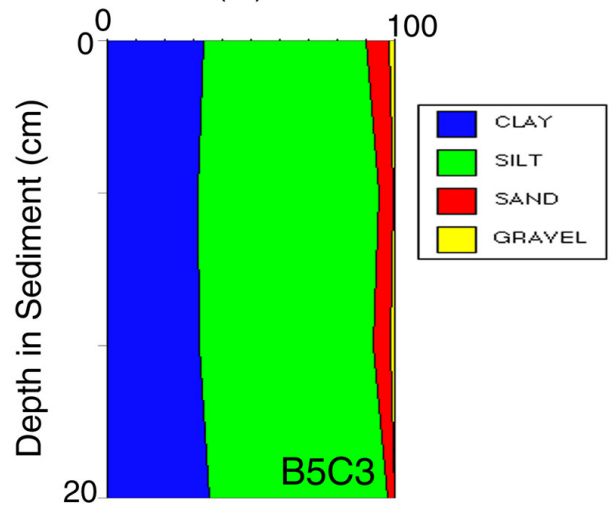
X-radiograph



Water Content (weight fraction)



Grain Size (%)



Core B5C3 was taken on June 19, 1996 in 26 meters of water. The core measured 27 cm in length, was x-rayed on July 2, 1996 and was subsampled on July 16, 1999 at 2 cm intervals down the whole core. This core was frozen during the x-radiograph and ice crystals are visible in the x-ray image. Features noted are seen in the x-ray, water content, and texture profiles above and include sand and mud deposits, mottled sediment, and some biological features.