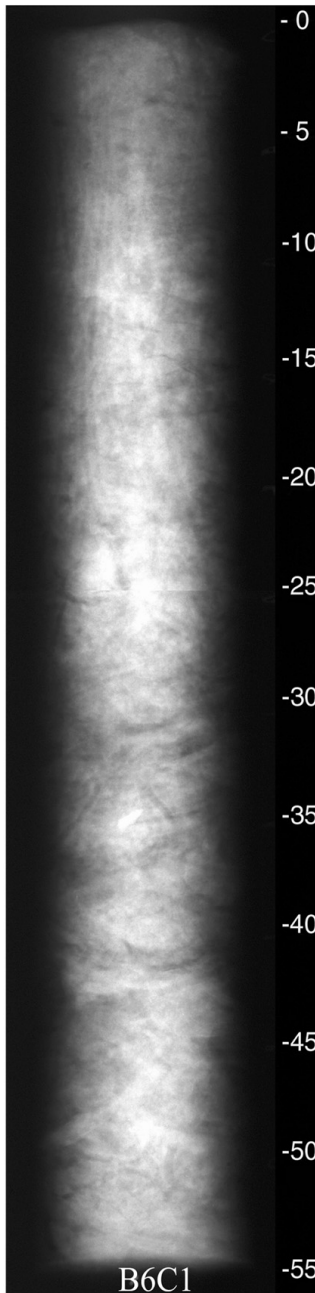
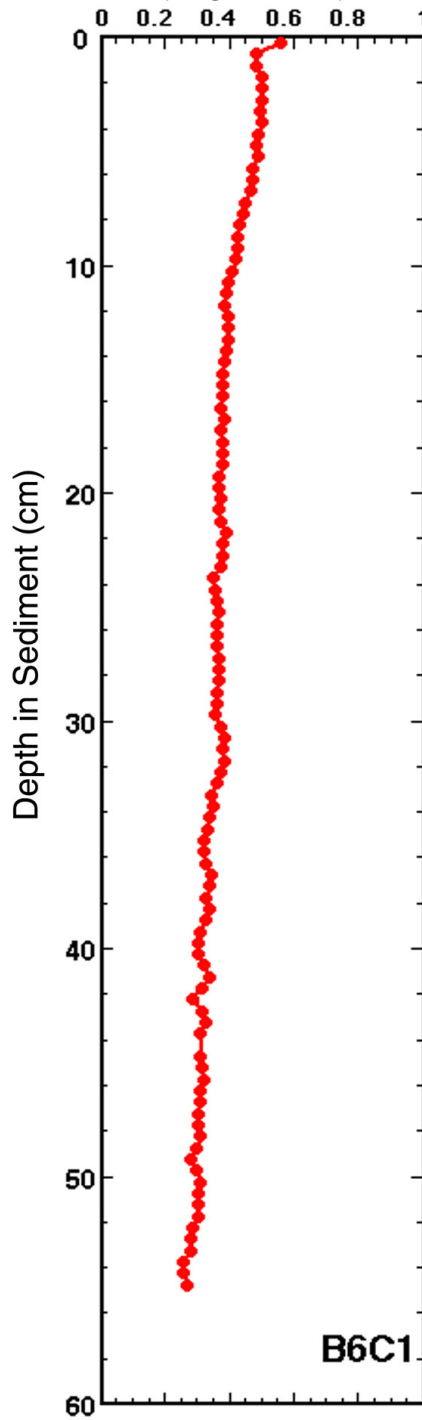


### X-radiograph



### Water Content

(weight fraction)



Core B6C1 was taken on June 19, 1996 in 37 meters of water. The core measured 55.5 cm in length, was x-rayed on June 25, 1996 and was subsampled on June 11, 1998 at 0.5 cm intervals down the whole core. Features noted are seen in the x-ray and water content profiles above and include mottled sediment, angled wispy layering, and some biological features such as worm tubes. No textural analysis is intended for this core.