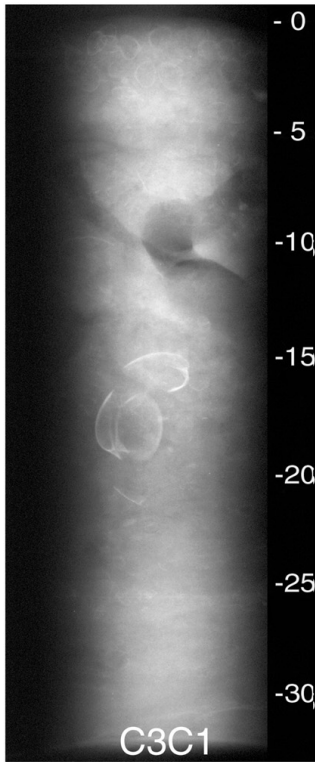
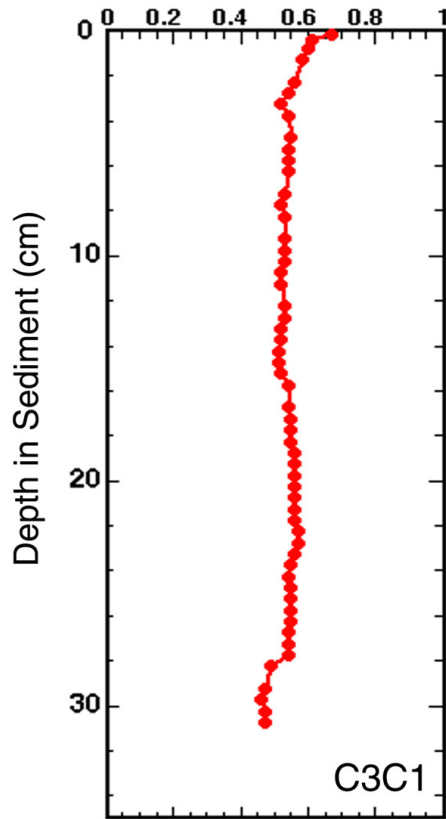


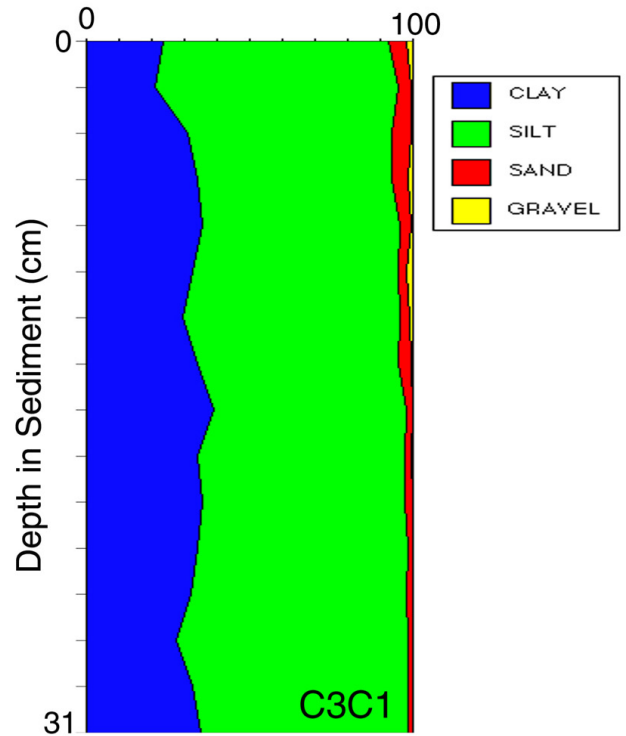
X-radiograph



Water Content (weight fraction)



Grain Size (%)



Core C3C1 was taken on June 19, 1996 in 19 meters of water. The core measured 31.4 cm in length, was x-rayed on June 25, 1996 and was subsampled on October 8, 1996 at 0.5 cm intervals down the whole core. Features noted are seen in the x-ray, water content, and texture profiles above and include mottled sediment, mud cracks, and biological features such as shell layers.