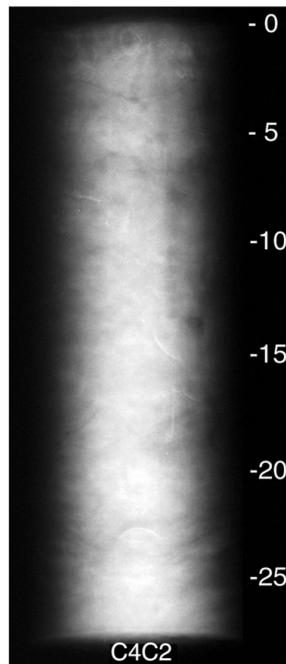
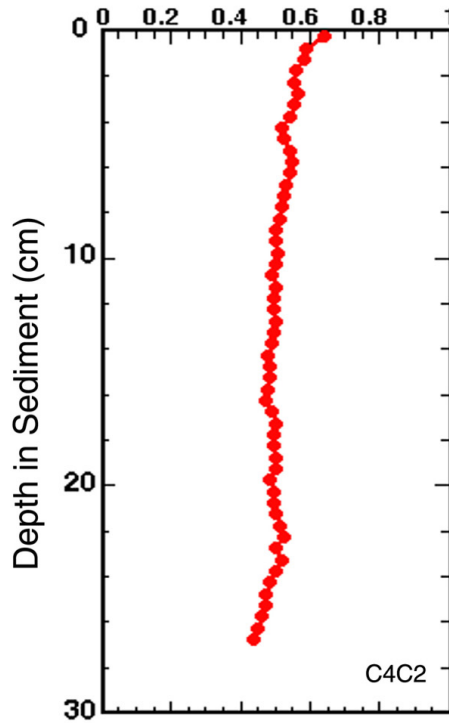


X-radiograph



Water Content (weight fraction)



Core C4C2 was taken on June 19, 1996 in 28 meters of water. The core measured 28.25-28.75 cm in length, was x-rayed on June 26, 1996 and was subsampled on May 1, 1997 at 0.5 cm intervals down the whole core. Features noted are seen in the x-ray and water content profiles above and include mottled sediment, and biological features such as small shells and worm tubes. No textural analysis is intended for this core.