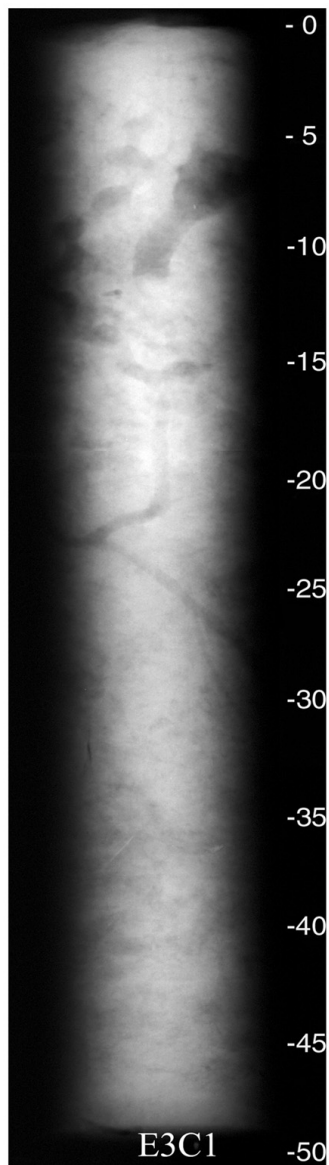
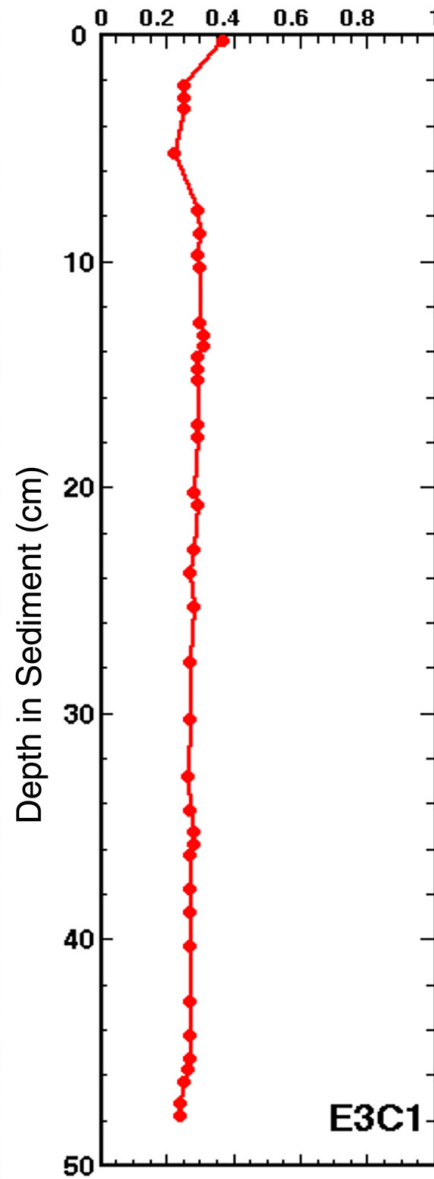


X-radiograph



Water Content (weight fraction)



Core E3C1 was taken on June 20, 1996 in 31 meters of water. The core measured 49.5 cm in length, was x-rayed on July 1, 1996 and was subsampled on June 16, 1998 at 0.5 cm intervals down the whole core. Features noted are seen in the x-ray and water content profiles above and include mottled sediment, gas, and biological features such as worm tubes. No textural analysis is intended for this core.