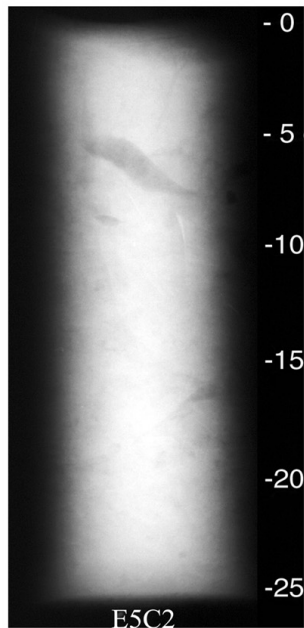
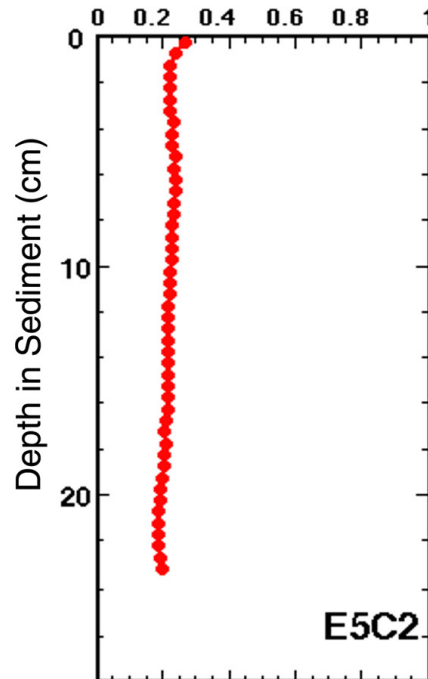


X-radiograph



Water Content (weight fraction)



Core E5C2 was taken on June 20, 1996 in 28 meters of water. The core measured 25.5 cm in length, was x-rayed on June 25, 1996 and was subsampled on April 15, 1998 at 0.5 cm intervals down the whole core. Features noted are seen in the x-ray and water content profiles above and include mottled sediment, gas, and some biological features such as small shells and worm tubes. No textural analysis is intended for this core.