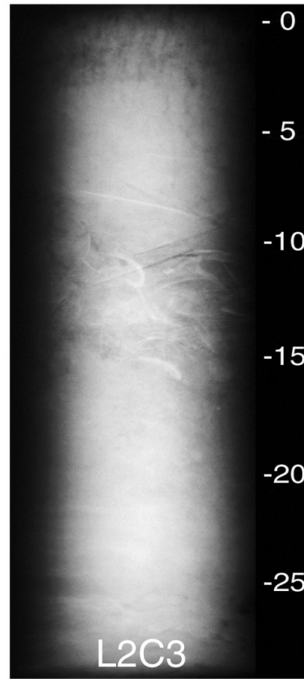
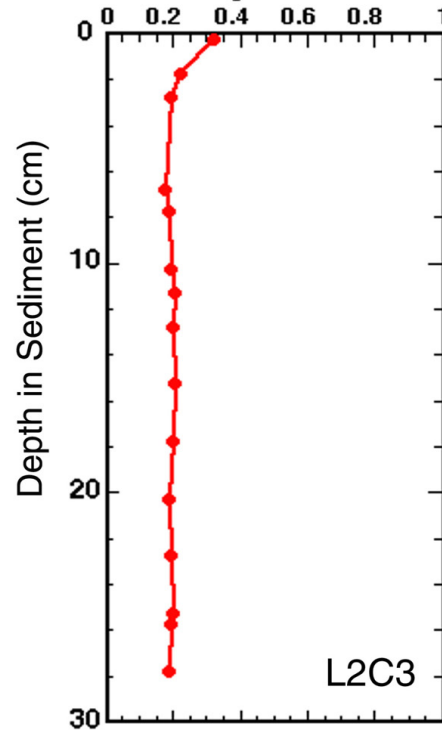


## X-radiograph



## Water Content (weight fraction)



Core L2C3 was taken on June 21, 1996. The core measured 28.5 cm in length, was x-rayed on July 1, 1996 and was subsampled on June 12, 1998 at 0.5 cm intervals down the whole core. Features noted are seen in the x-ray and water content profiles above and include mottled sediment, angled layering, wispy sand deposits, gas cracks, and some biological features such as shells.