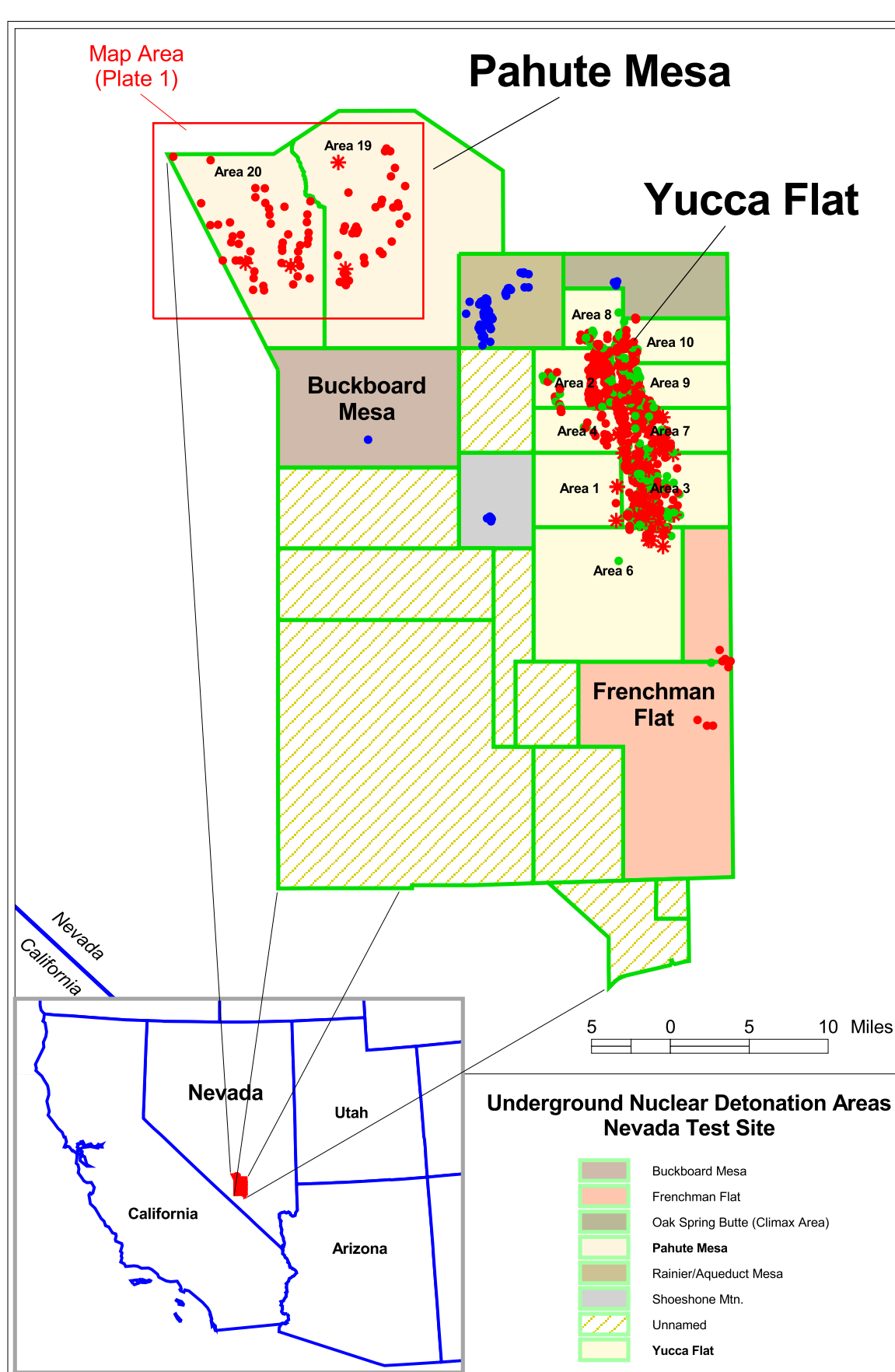
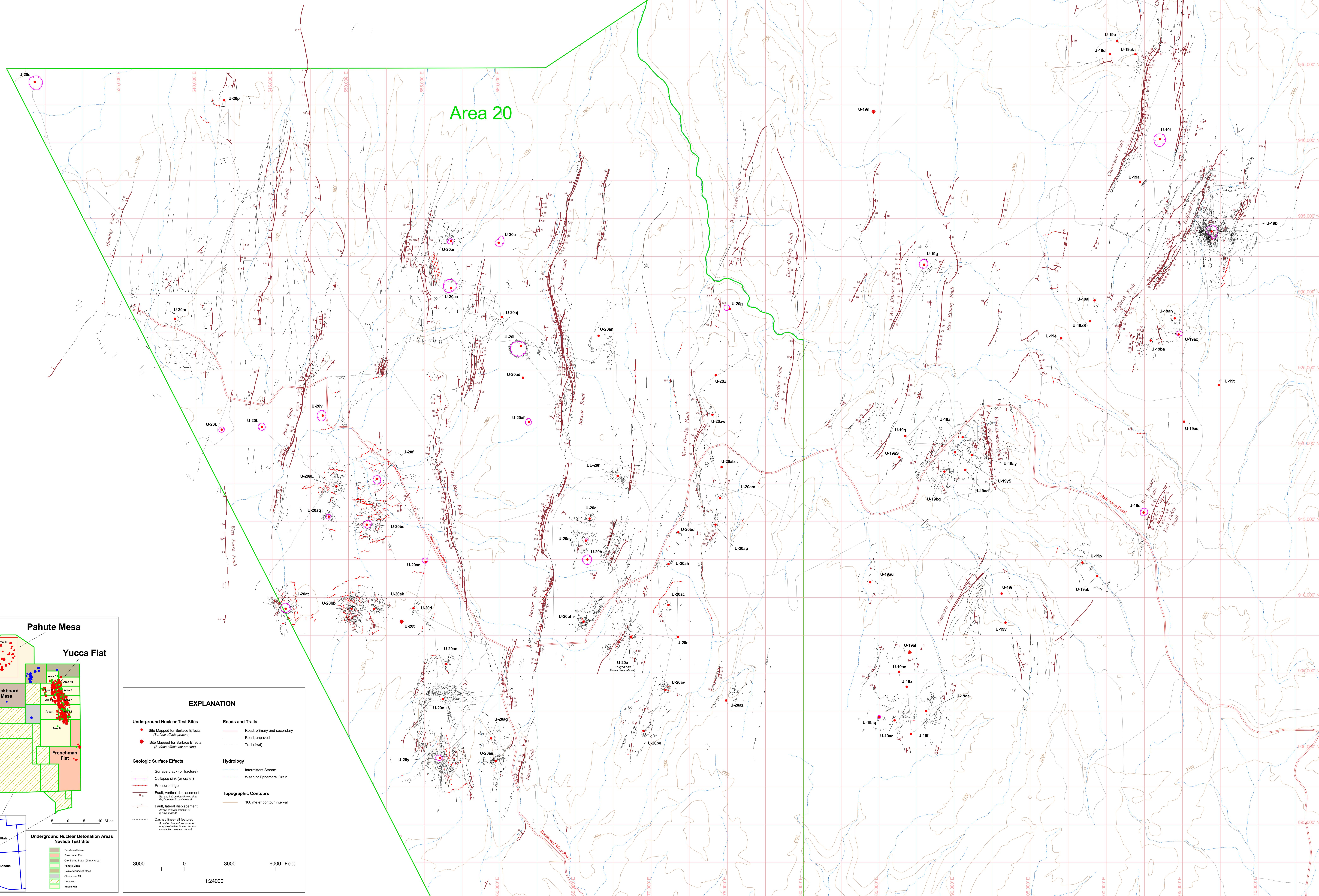


GEOLOGIC SURFACE EFFECTS OF UNDERGROUND NUCLEAR TESTING, PAHUTE MESA, NEVADA TEST SITE, NEVADA

By
Dennis N. Grasso
2001



EXPLANATION

Underground Nuclear Test Sites	Roads and Trails
● Site Mapped for Surface Effects (Surface effects present)	— Road, primary and secondary
★ Site Mapped for Surface Effects (Surface effects not present)	— Road, unpaved
	— Trail (4wd)
Geologic Surface Effects	Hydrology
— Surface crack (or fracture)	— Intermittent Stream
— Collapse sink (or crater)	— Wash or Ephemeral Drain
— Pressure ridge	
— Fault, vertical displacement (direction of movement)	Topographic Contours
— Fault, lateral displacement (arrow indicates direction of motion)	— 100 meter contour interval
— Dashed lines—all features of border for which showing of approximately 1:2000 surface effects are not present	

3000 0 3000 6000 Feet

1:24000

Map Scale: 1:24,000, 1 inch equals 2,000 feet
Map Projection: Nevada State Plane, Contour, in feet
Datum: North American Datum 1983, 2,500-foot grid spacing

For sale by U.S. Geological Survey, Map Distribution, Box 25286, Federal Center, Denver, CO 80225
1-888-ASK-USGS

A PDF file for this map is available at <http://topology.usgs.gov>
Manufactured approval for publication 0202005
This map was produced on request, directly from digital files, on an electronic poster.

This map is preliminary and has not been reviewed for conformity with the U.S. Geological Survey editorial standards or with the North American Stratigraphic Code. Any use of trade, firm, or product names is for descriptive purposes only and does not imply endorsement by the U.S. Government.