

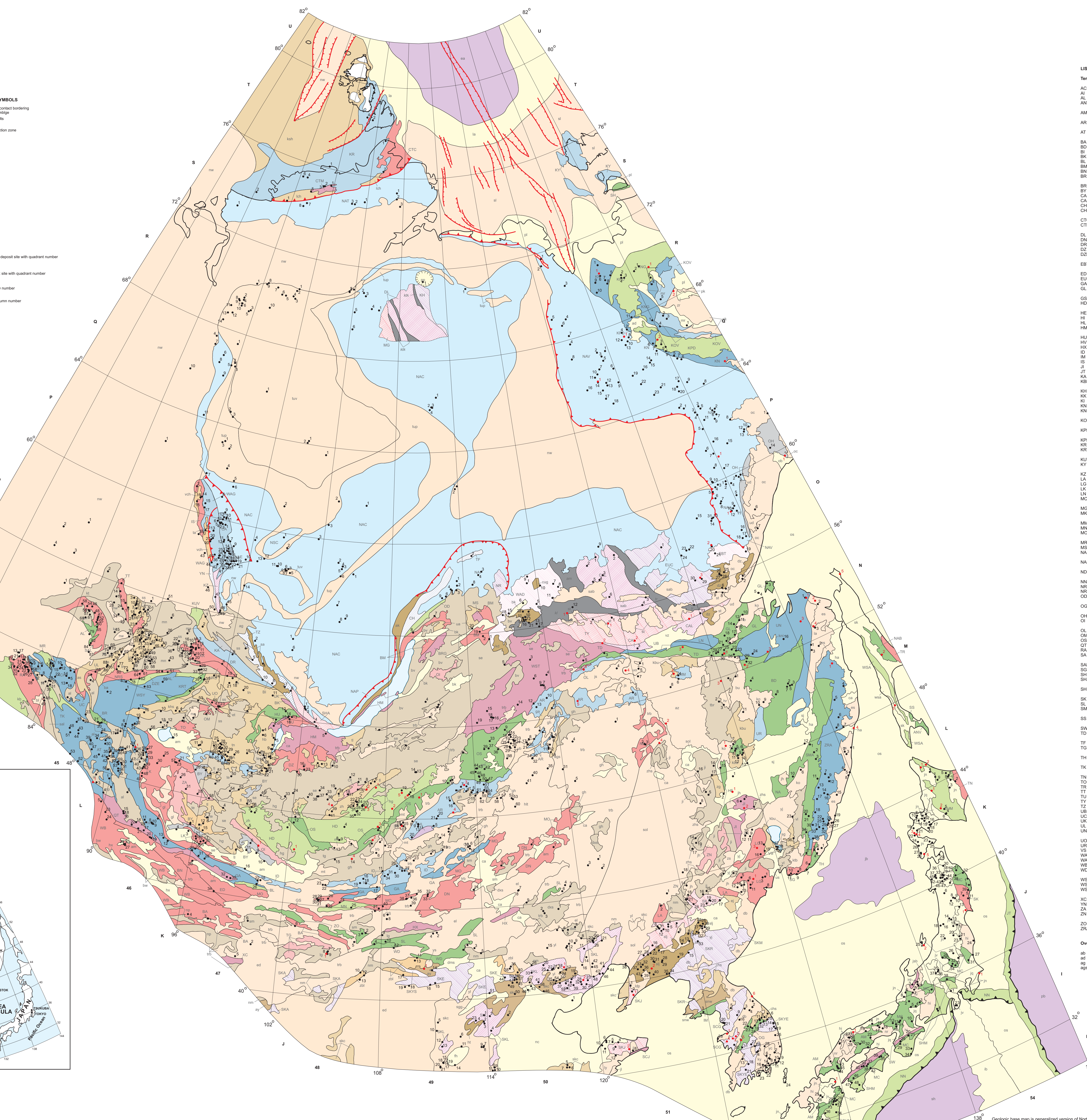
PREPARED IN COLLABORATION WITH RUSSIAN ACADEMY OF SCIENCES MONGOLIAN ACADEMY OF SCIENCES JILIN UNIVERSITY KOREAN INSTITUTE OF GEOSCIENCE AND MINERALS GEOLOGICAL SURVEY OF JAPAN/AIST

EXPLANATION TERRAINES IN LATE PRECAMBRIAN AND PHANEROZOIC OROGENIC BELTS

TERRAINES IN EARLY PRECAMBRIAN CRYSTALLINE BASIN AND CRATONS WITH METACRUSTAL OVERLAP

OVERLAP AND STITCH ASSEMBLAGES

CONTACTS, FAULTS, AND SYMBOLS

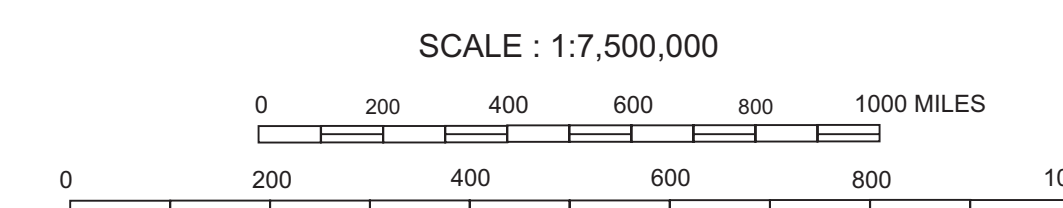


LIST OF MAP UNITS: A detailed list of geological units with their abbreviations and descriptions, including terranes, assemblages, and major melange zones.

MINERAL DEPOSIT LOCATION MAP FOR NORTHEAST ASIA

Compiled by Alexander A. Obolenskiy, Sergey M. Rodionov, Gunchin Dejmdaa, Ochr Gerel, Duk Hwan Hwang, Robert J. Miller, Warren J. Nolleberg, Masatsugu Ogasawara, Alexander P. Smelov, Hongquan Yan, and Zhan V. Seminsky

With compilations on specific regions by Sodov Ariunbileg, Gennadiy V. Biryul'kin, Jamba Byamba, Yury V. Davydov, Elimir G. Distanov, Dangiendorjiin Dorjgotov, Gennadiy N. Gamyannin, Valery Yu. Fridovskiy, Nikolai A. Goryachev, Ayurzana Gotosvuren, Alexander I. Khanchuk, Anatoliy P. Kochnev, Alexei V. Kostin, Mikhail I. Kuzmin, Sergey A. Letunov, Jiliang Li, Xujun Li, Galina D. Malceva, V.D. Melnikov, Valery M. Nikitin, Leonid M. Parfenov, Nikolay V. Popov, Andrei V. Prokopyev, Vladimir Ratkin, Vladimir I. Shpikerman, Vitaly I. Sotnikov, Alexander V. Spiridonov, Valery V. Stogniy, Sadahisa Sudo, Fengyue Sun, Jiapeng Sun, Weihi Sun, Valery M. Supletsov, Vladimir F. Timofeev, Oleg A. Tyan, Valery G. Vetluzhskikh, Koji Wakita, Aihua Xi, Yakov V. Yakovlev, Vladimir I. Zhizhin, Nikolay N. Zinchuk, and Lydia M. Zorina



Geologic base map is generalized version of Northeast Asia Geodynamics Map (Parfenov, and others, 2003).

Specific regions for these maps were compiled by the following persons. Table listing regions and contributors.

1 Russian Academy of Sciences, Khabarovsk 2 Russian Academy of Sciences, Novosibirsk 3 Mongolian Academy of Sciences, Ulaanbaatar 4 Mineral Resources Authority of Mongolia, Ulaanbaatar 5 Korean Institute of Geology, Mining, and Minerals, Taejeon 6 Russian Academy of Sciences, Vladivostok 7 Geological Survey of Japan/AIST, Tsukuba 8 U.S. Geological Survey, Menlo Park 9 Russian Academy of Sciences, Yakutsk 10 Irkutsk State Technical University, Irkutsk 11 Jilin University, Changchun 12 Yakutian State University, Yakutsk 13 Mongolian University of Science and Technology, Ulaanbaatar 14 Russian Academy of Sciences, Irkutsk 15 Russian Academy of Sciences, Blagoveshchensk 16 Ministry of Industry and Commerce, Mongolia 17 Russian Academy of Sciences, Magadan 18 Mongolian National University, Ulaanbaatar 19 ALROSA Joint Company, Mirny