

Spring Tides and Bacterial Events

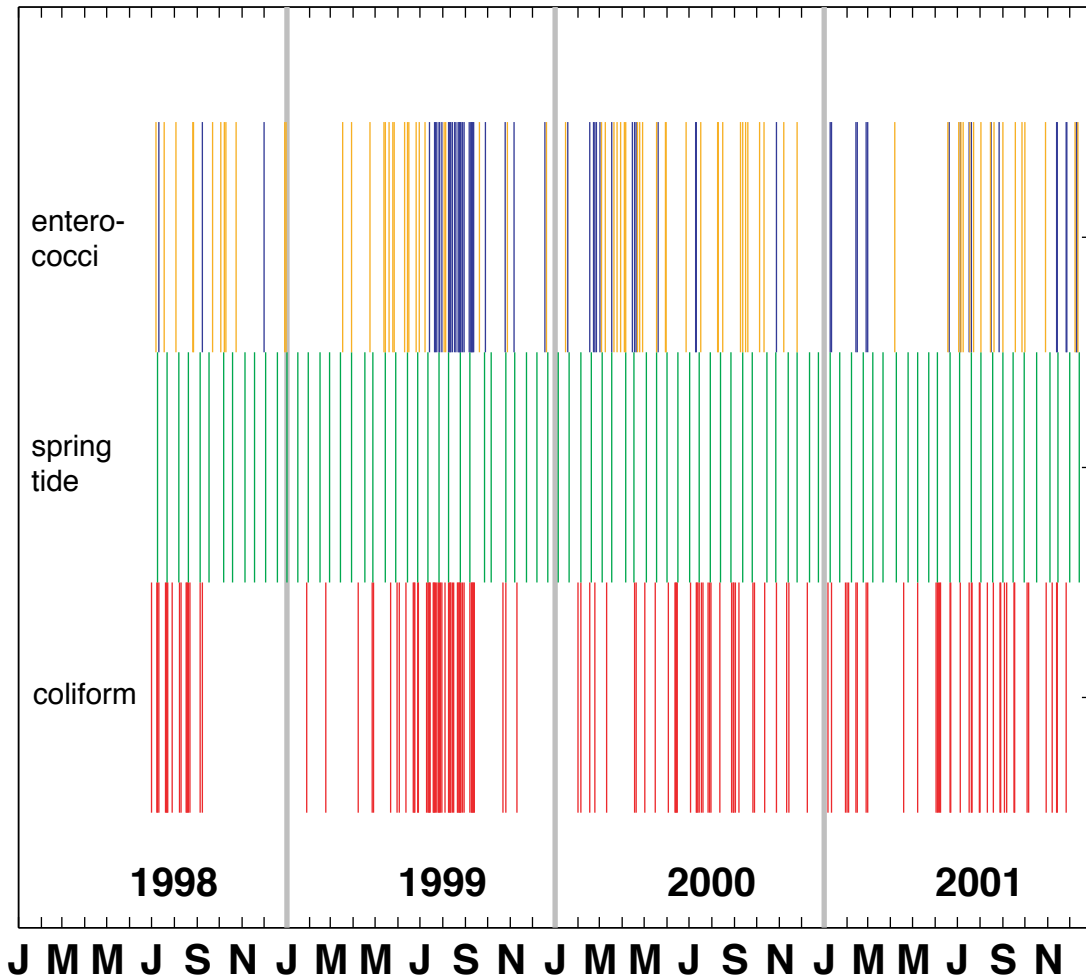


Figure 3-6. Days on which type 1 bacterial events (total or fecal coliform exceeds AB411 standards at any of stations 3N-12N) occur are shown as red lines in the bottom row; type 2 events (enterococci exceeds AB411 standards at 3 or more stations including one of 3N-12N) as blue lines in the top row; and type 3 events (enterococci exceeds AB411 at any 3N-12N station, on which there is not a type 1 or type 2 event) as orange lines in the top row. These events are calculated using the single-sample standards and the daily subsampled data set. The green lines in the middle row indicate the days on which spring tide occurred.