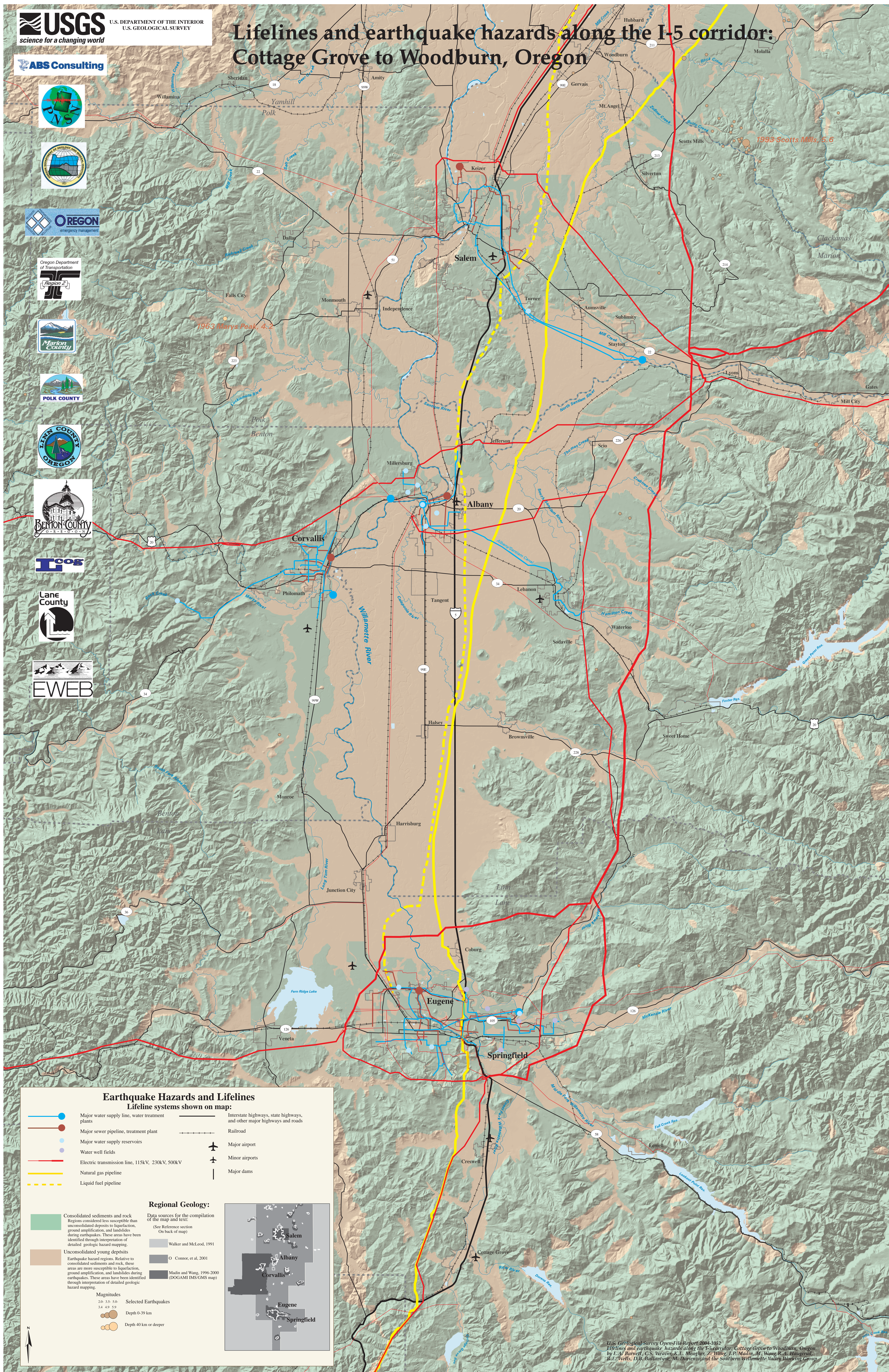


# Lifelines and earthquake hazards along the I-5 corridor: Cottage Grove to Woodburn, Oregon



U.S. Geological Survey Open-File Report 2004-1032  
 Lifelines and earthquake hazards along the I-5 corridor: Cottage Grove to Woodburn, Oregon  
 by E.A. Barnett, C.S. Weaver, K.L. Meagher, Z. Wang, L.P. Madin, M. Wang, R.A. Haugerud,  
 R.F. Wells, D.B. Ballantyne, M. Durizenco and the Southern Willamette Valley Working Group