

Plate 1. Stratigraphic and log data from site 1. Boreholes are ordered approximately from west to east.

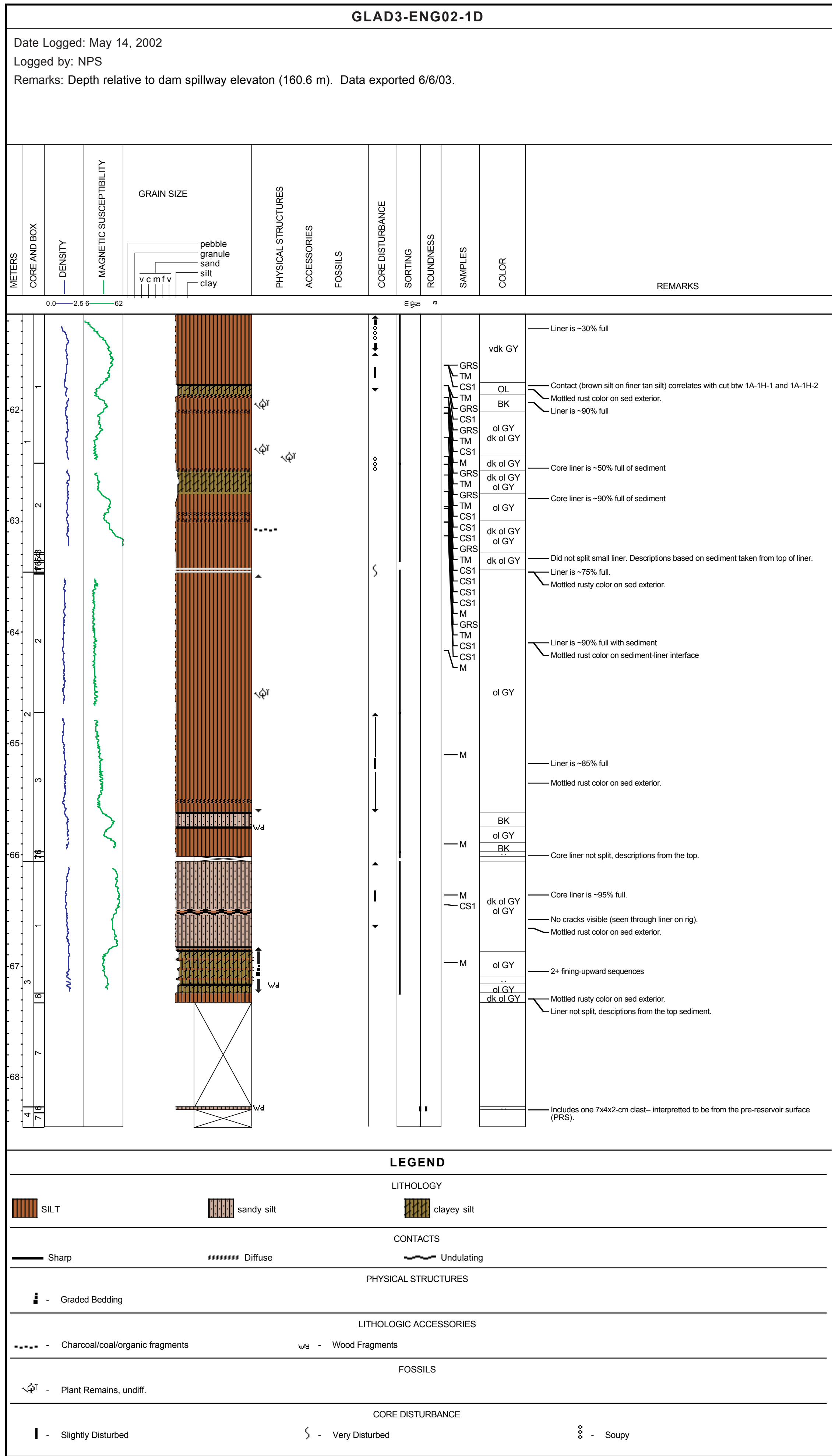
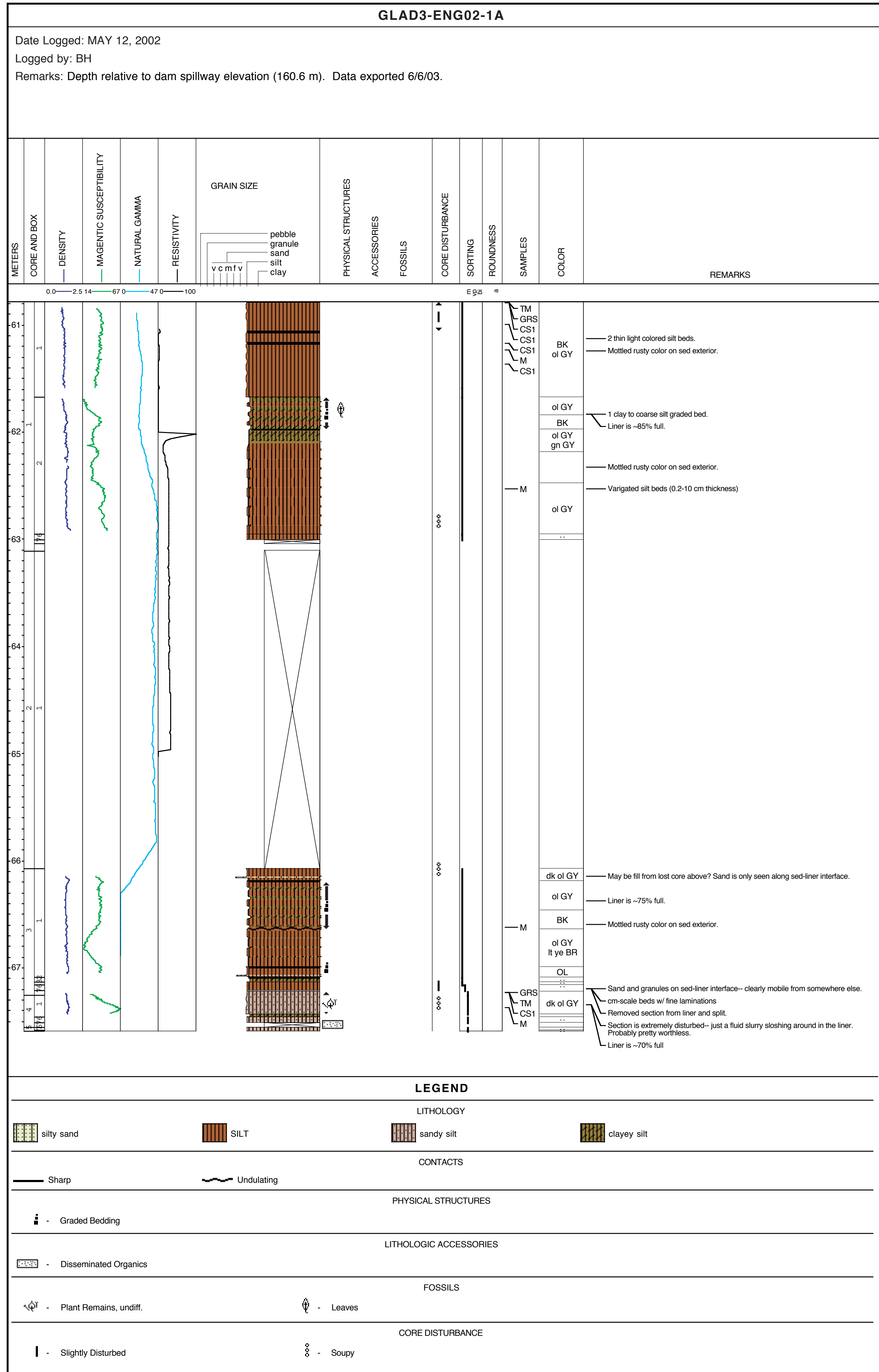
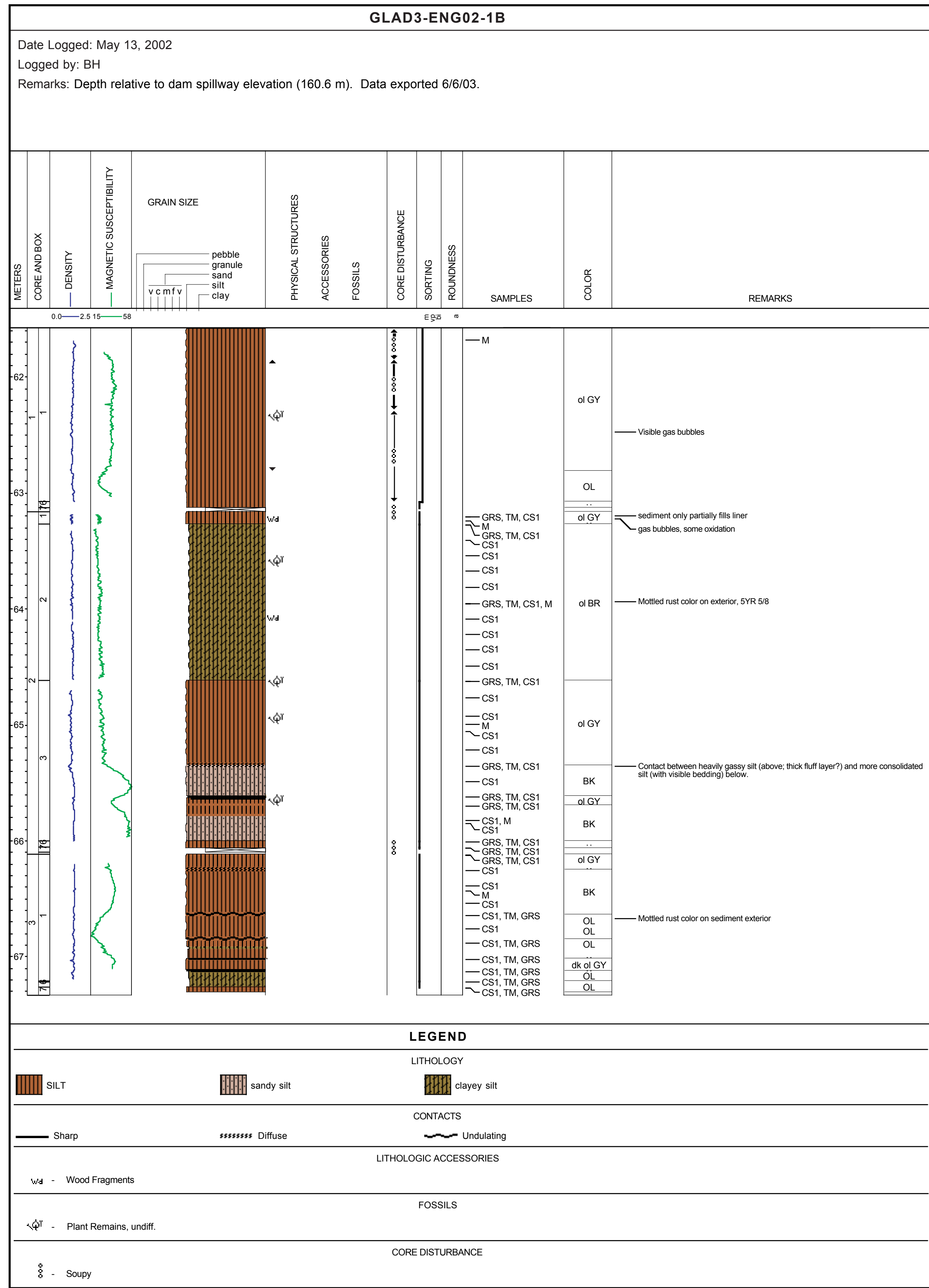
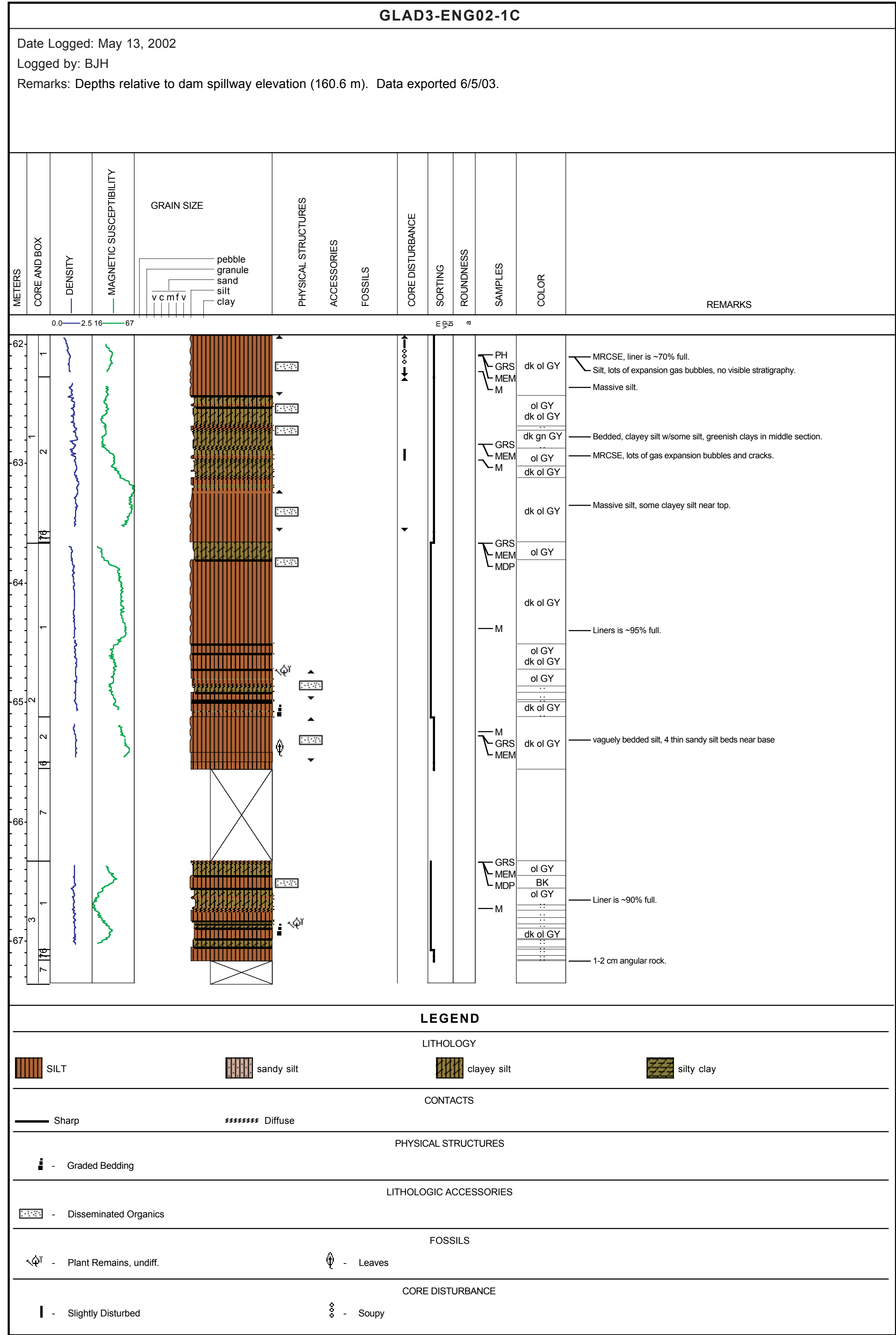




Plate 2. Stratigraphic and log data from site 6. Boreholes are ordered approximately from west to east.

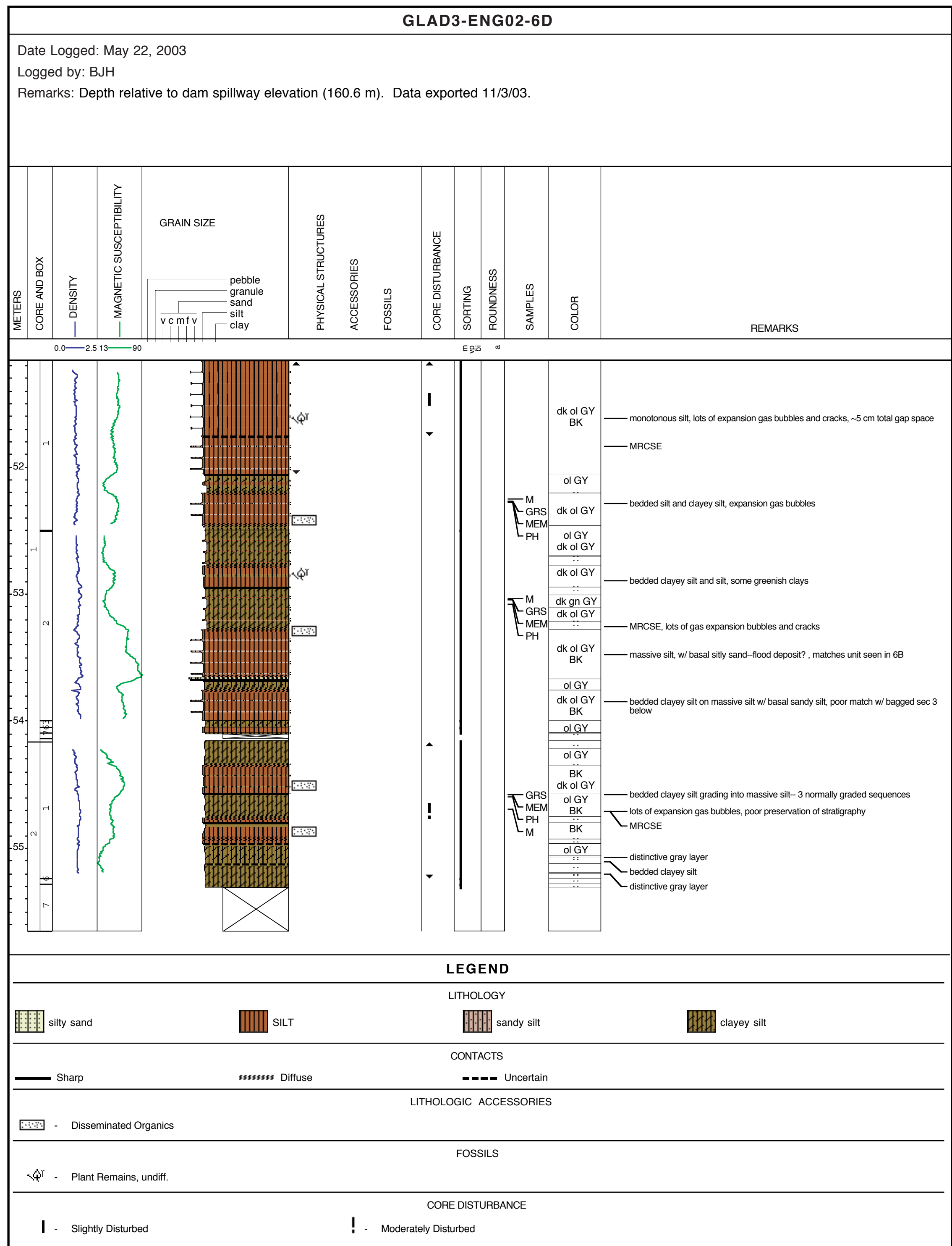
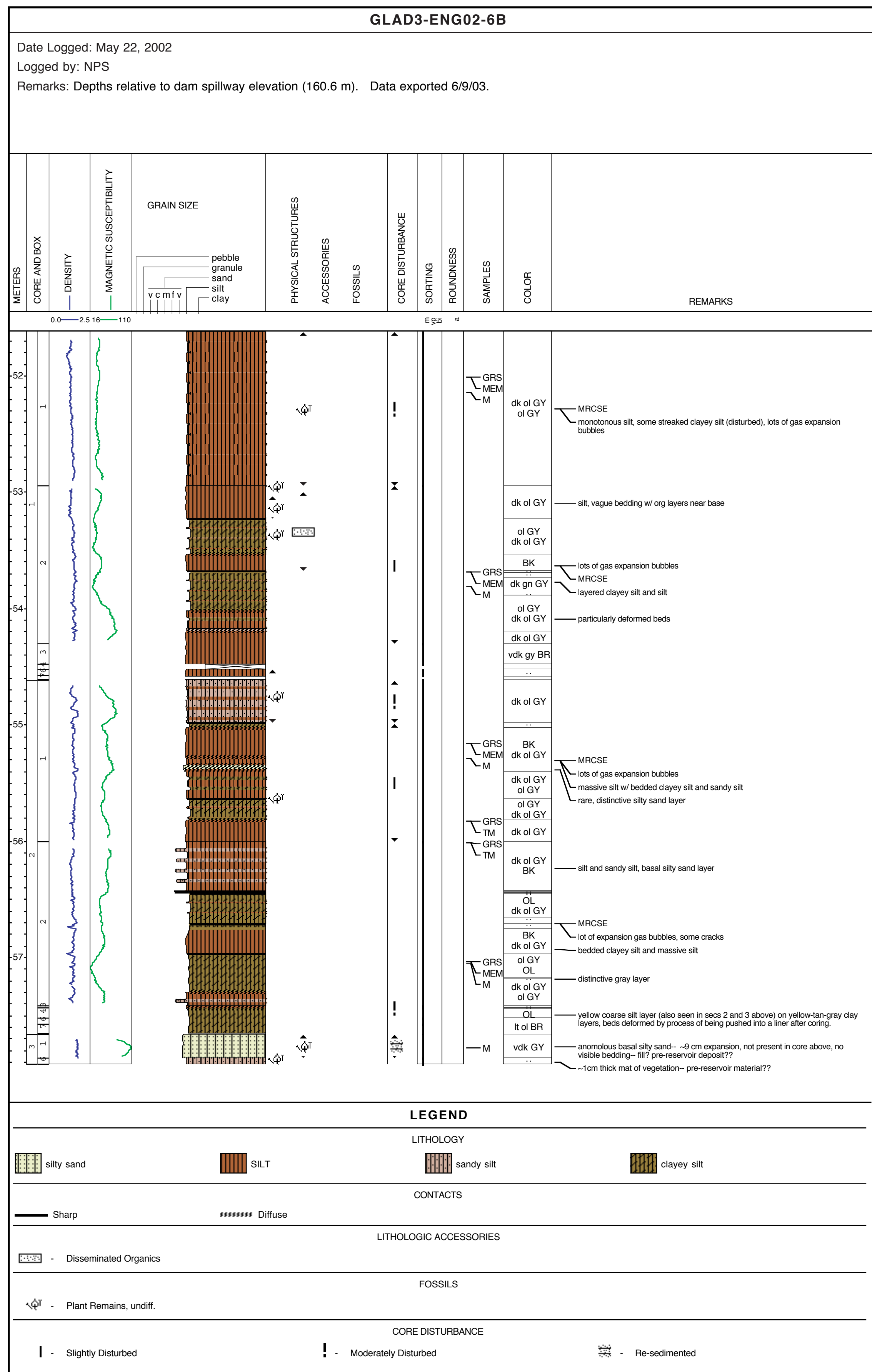
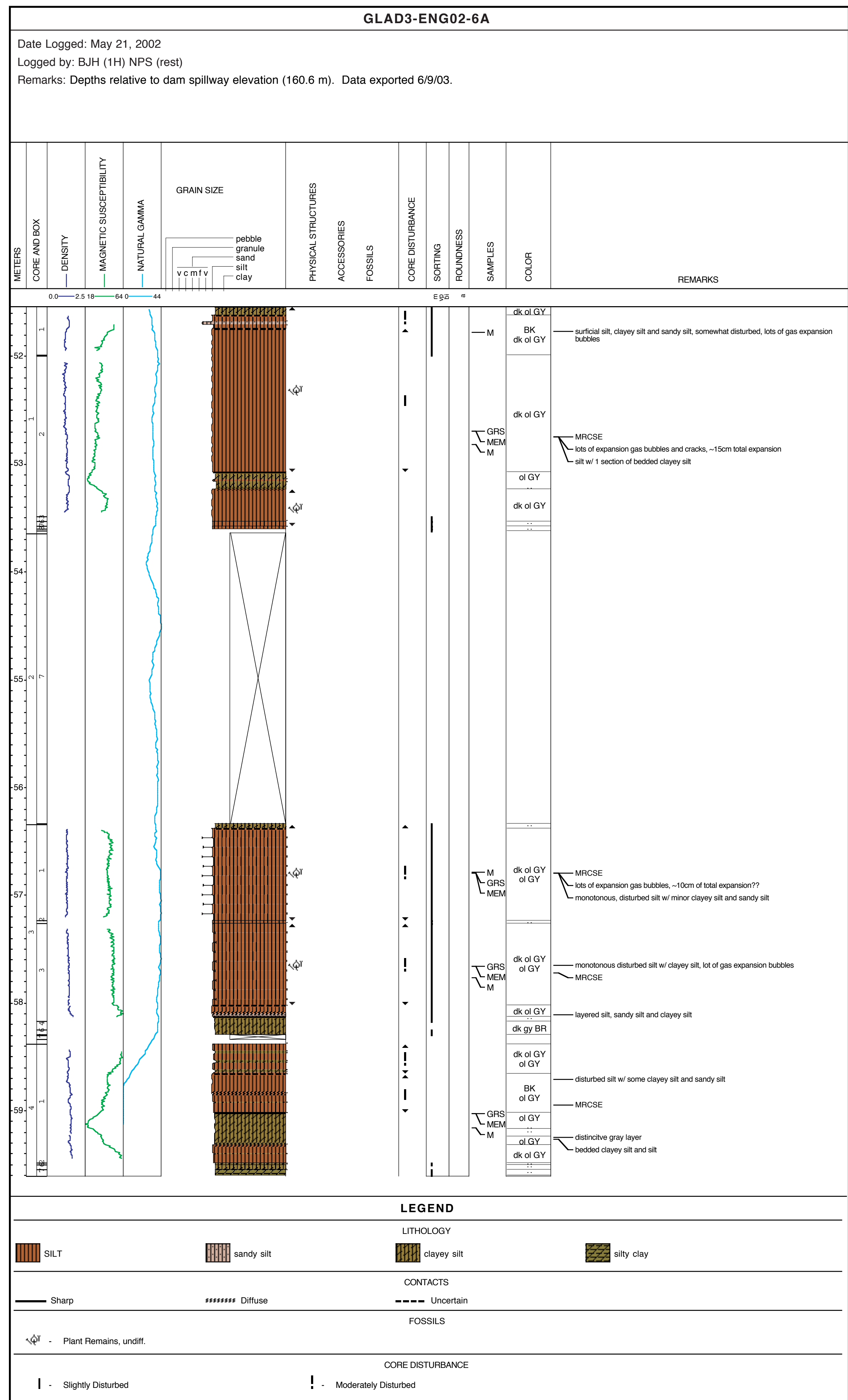
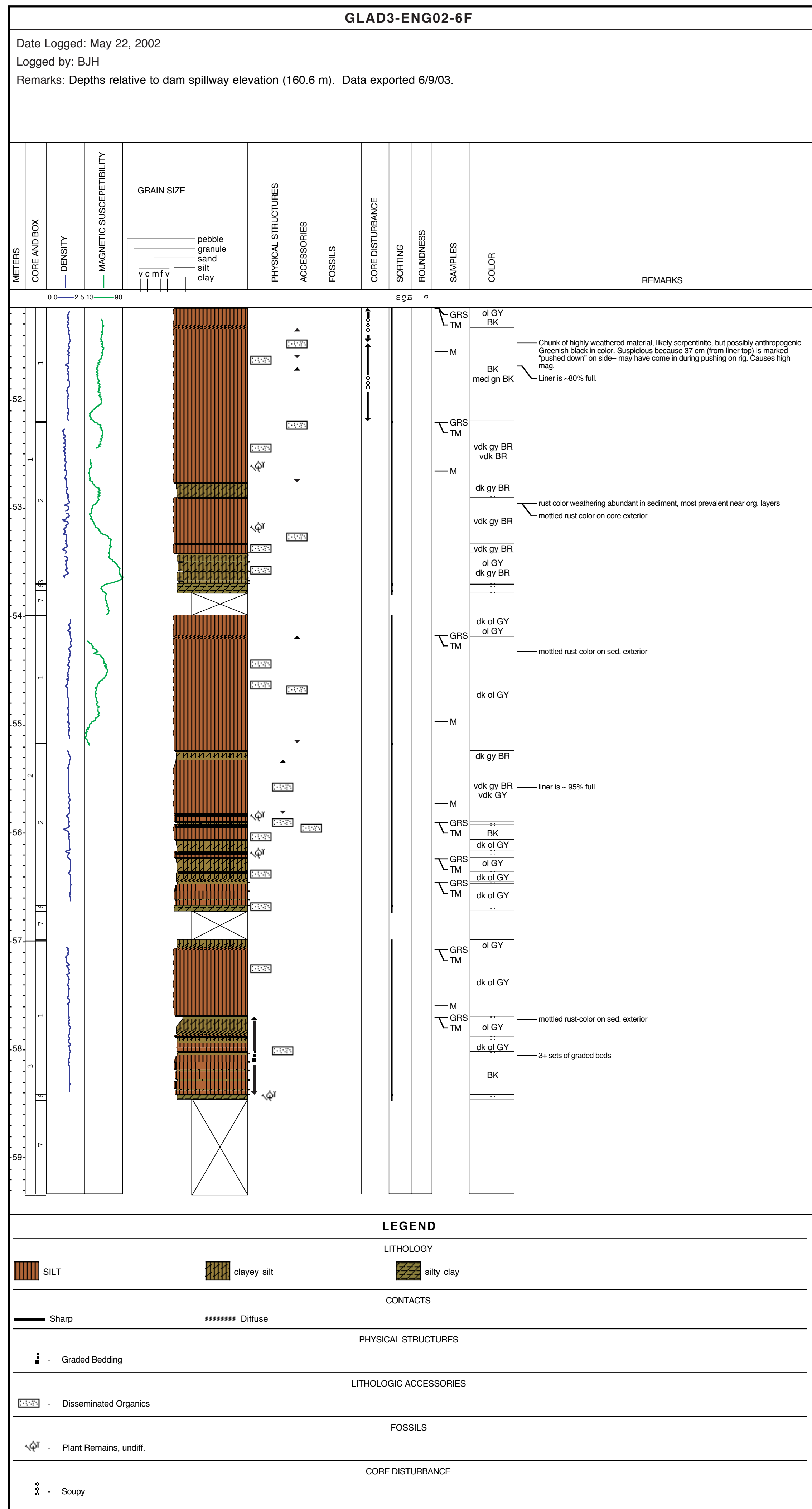
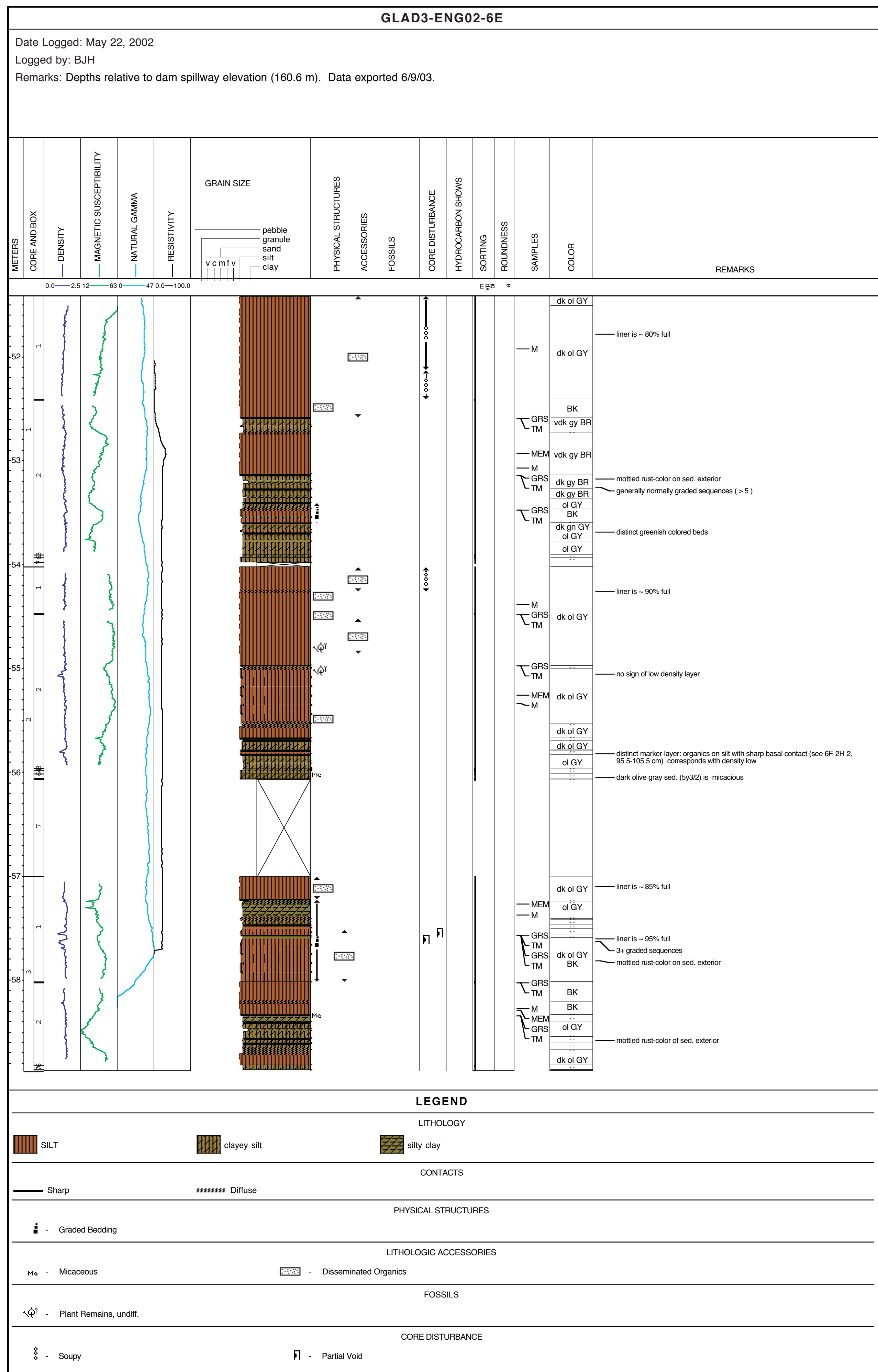


Plate 3. Stratigraphic and log data from site 4 (part 1). Boreholes are ordered approximately from west to east.

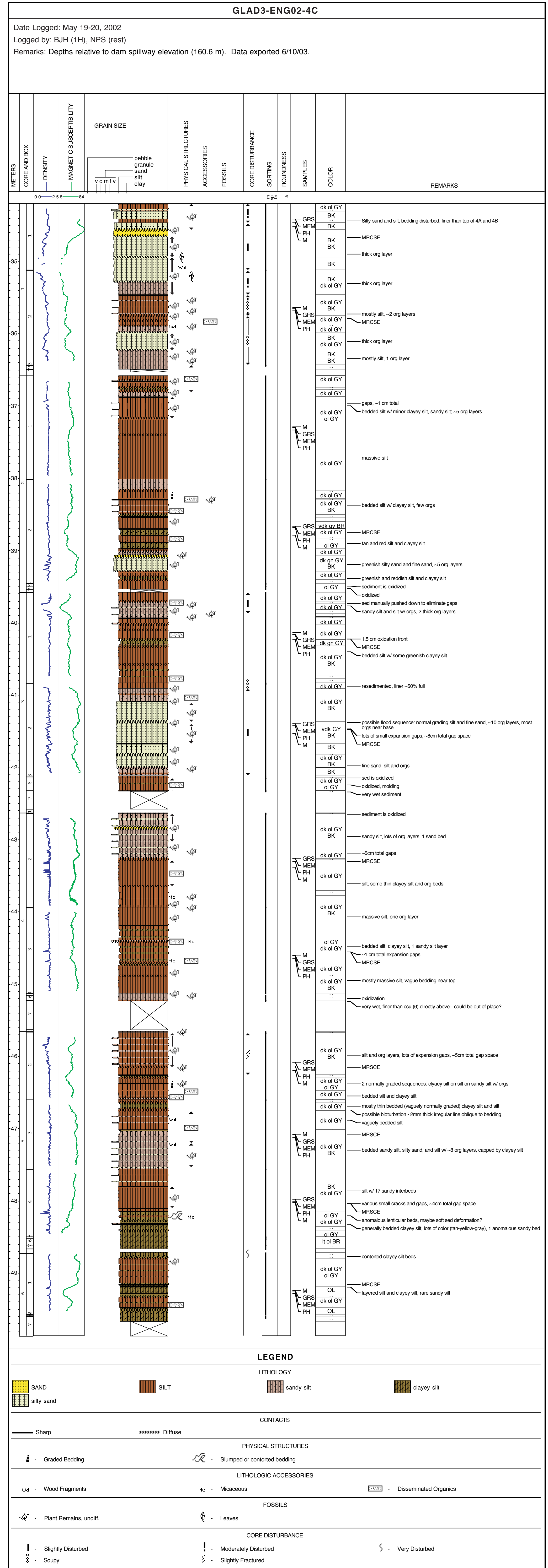
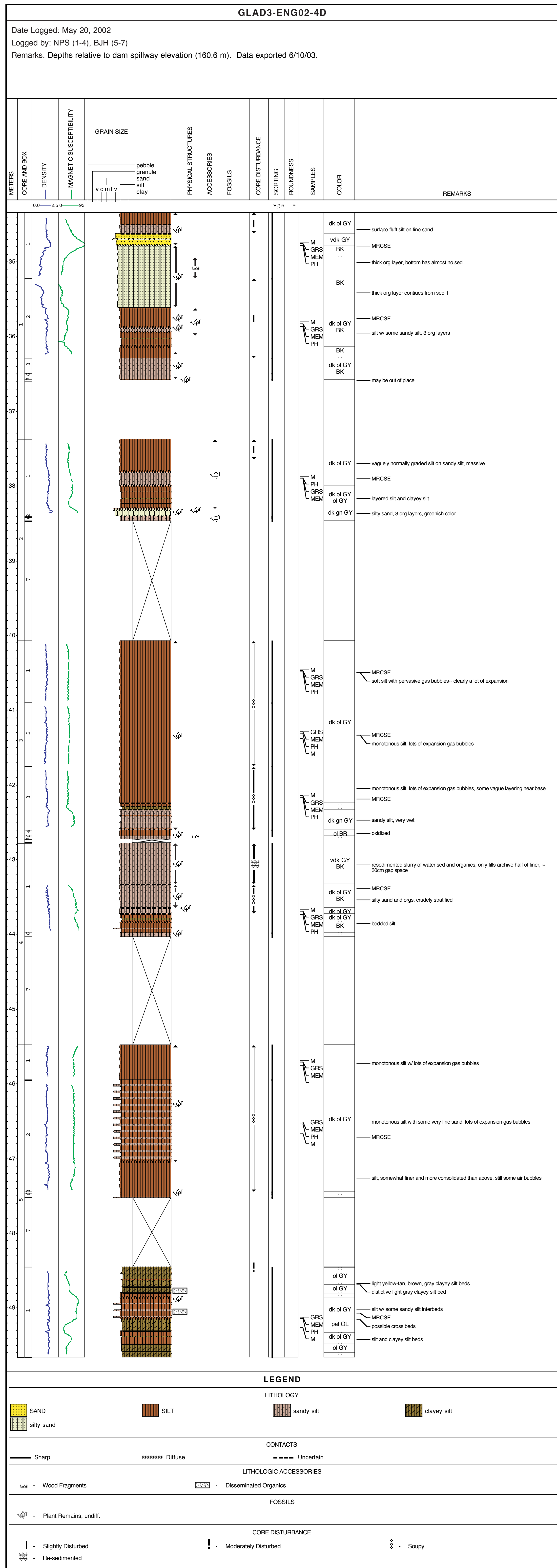


Plate 4. Stratigraphic and log data from site 4 (part 2). Boreholes are ordered approximately from west to east.

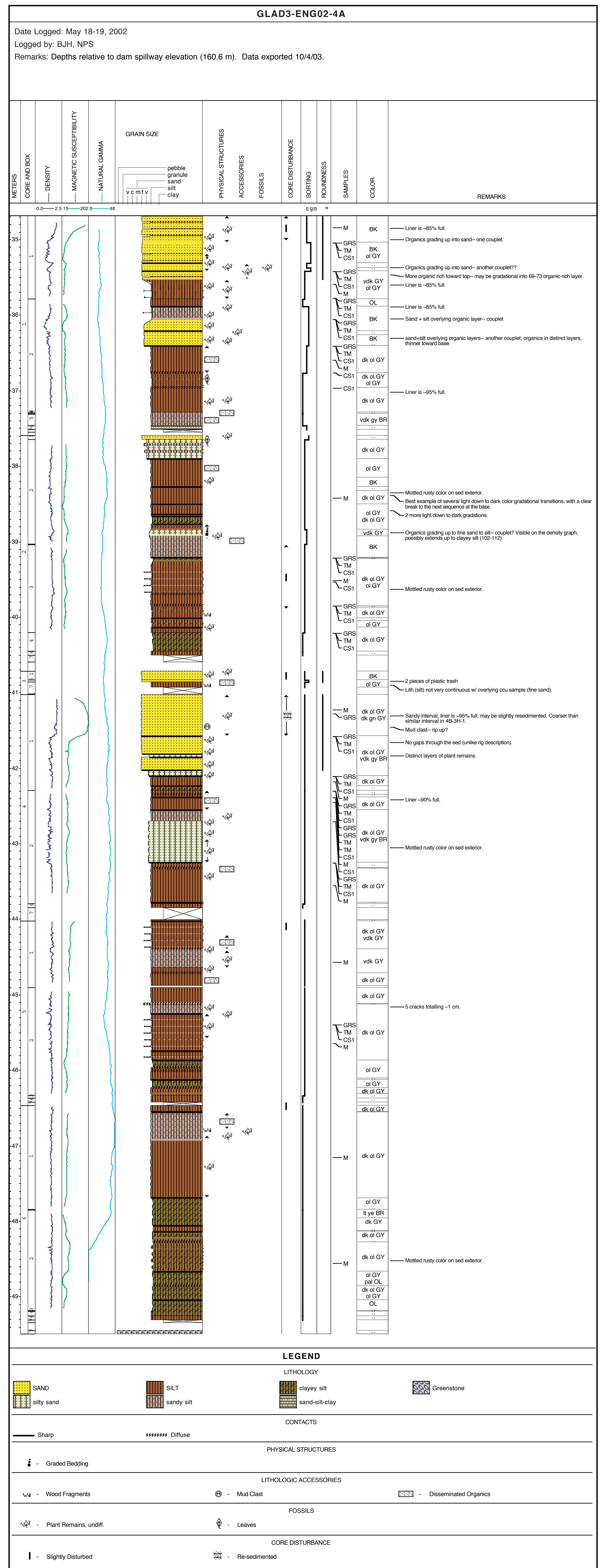
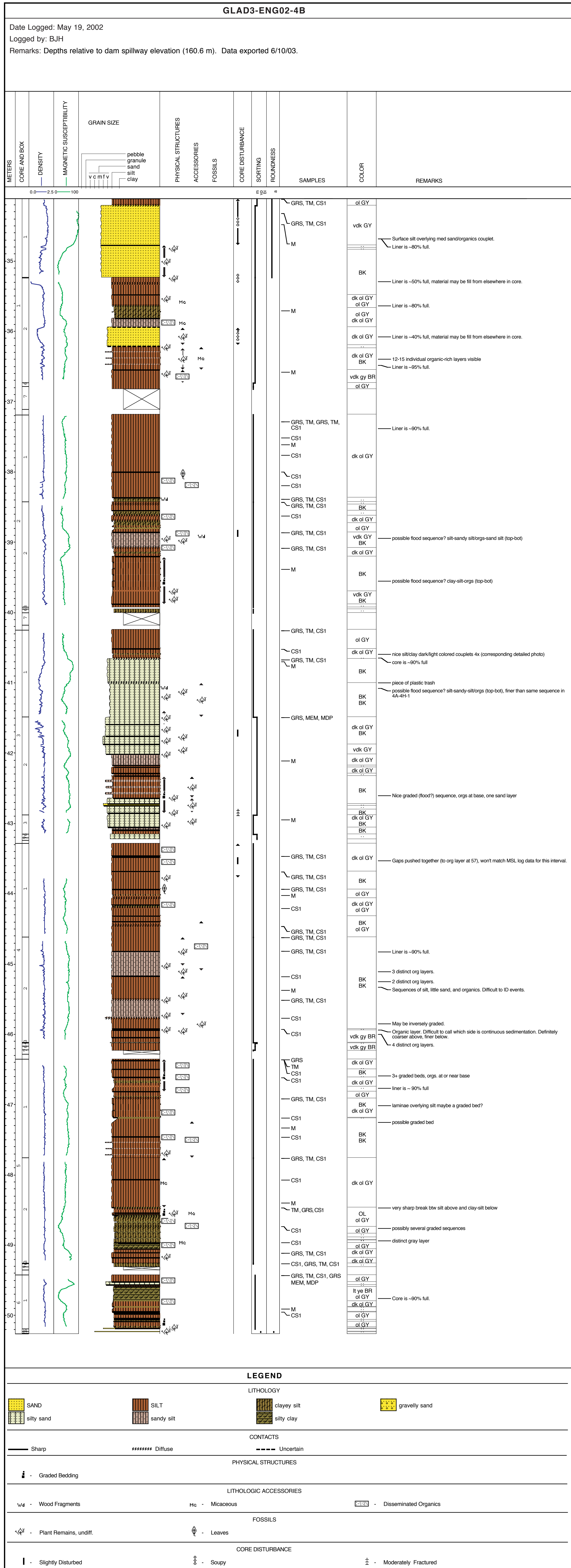


Plate 5. Stratigraphic and log data from site 7 (part 1). Boreholes are ordered approximately from west to east, and upstream to downstream.

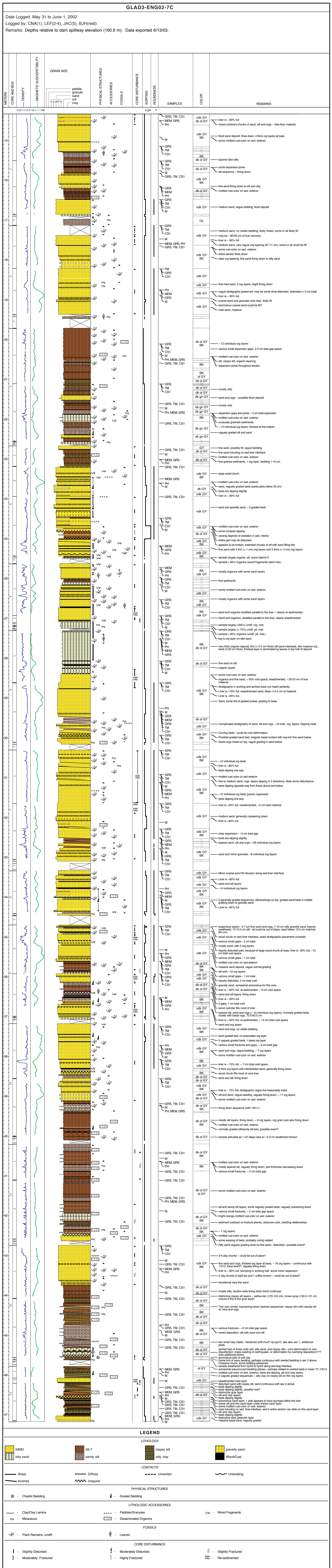
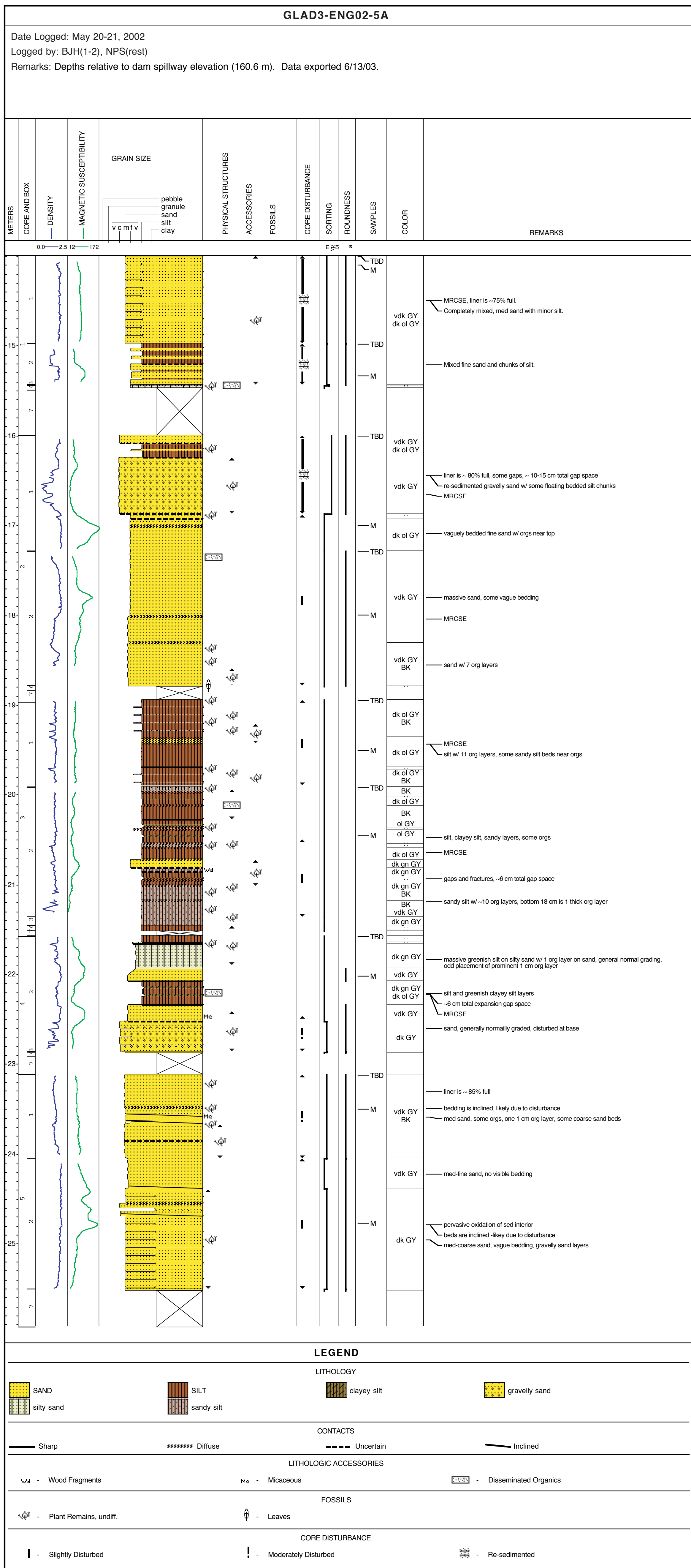


Plate 6. Stratigraphic and log data from site 7 (part 2). Boreholes are ordered approximately from west to east.
Note that 7B is a continuation of 7A.

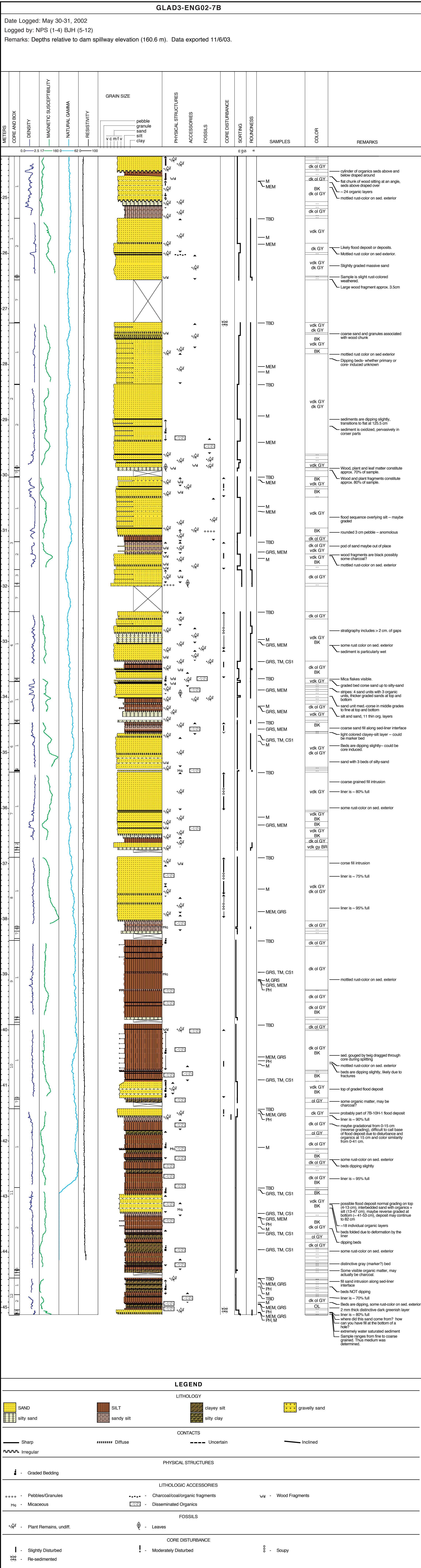
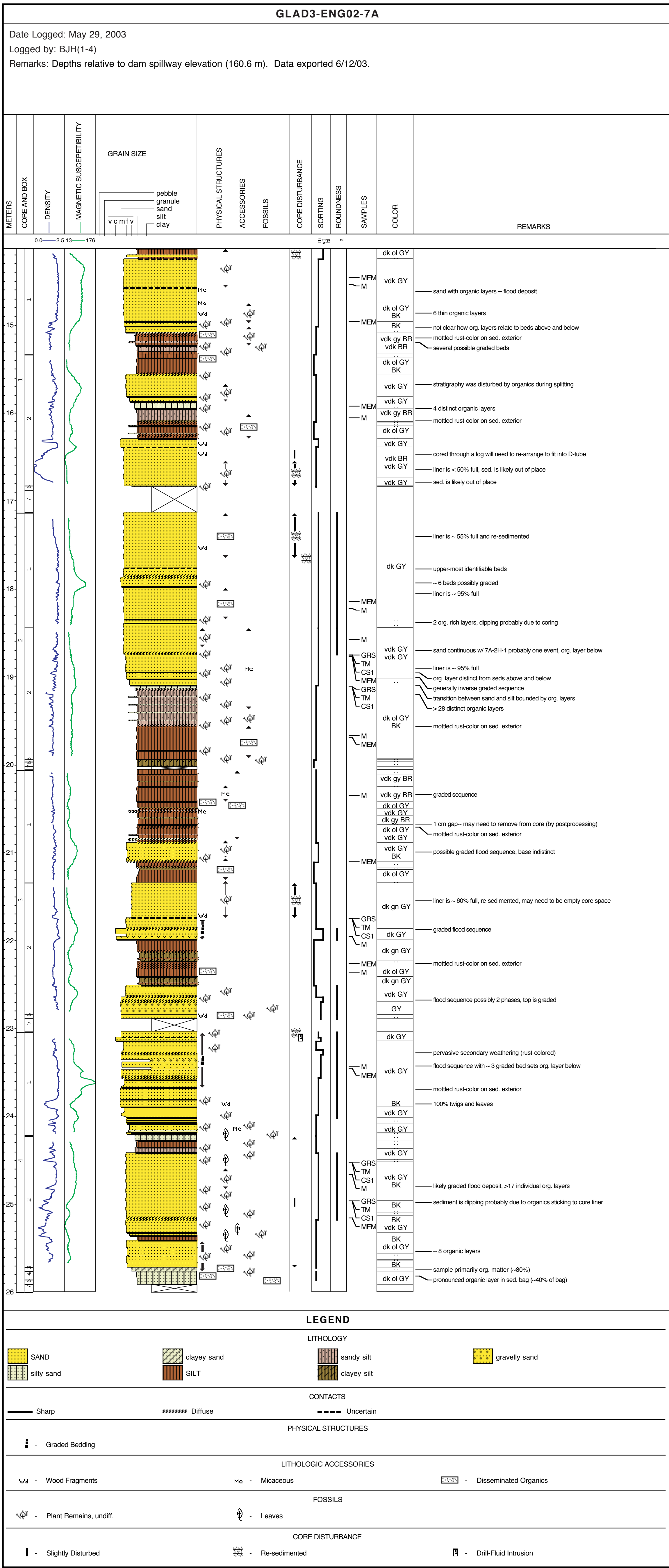


Plate 7. Stratigraphic and log data from site 9. Boreholes are ordered approximately from north to south.

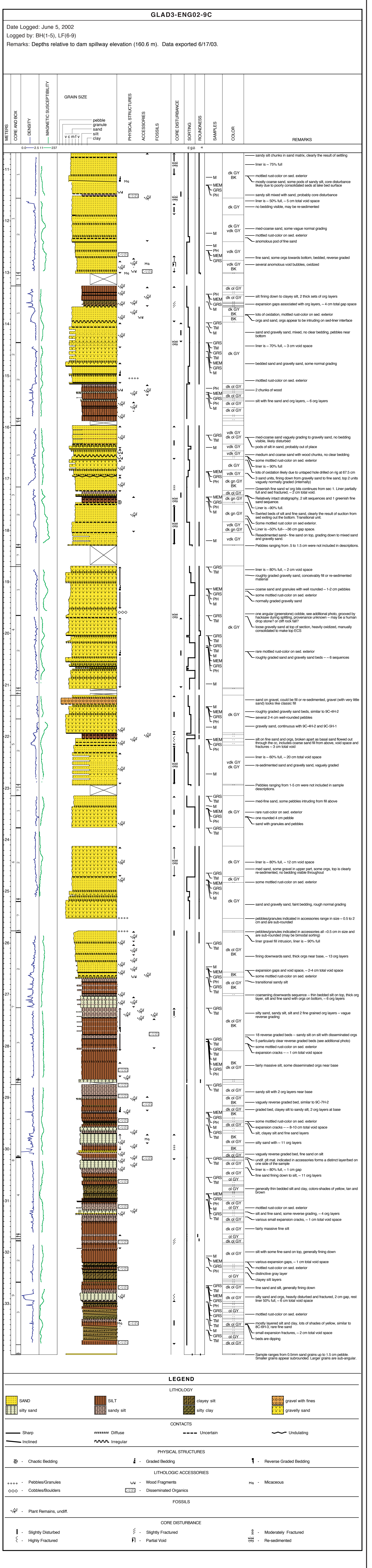
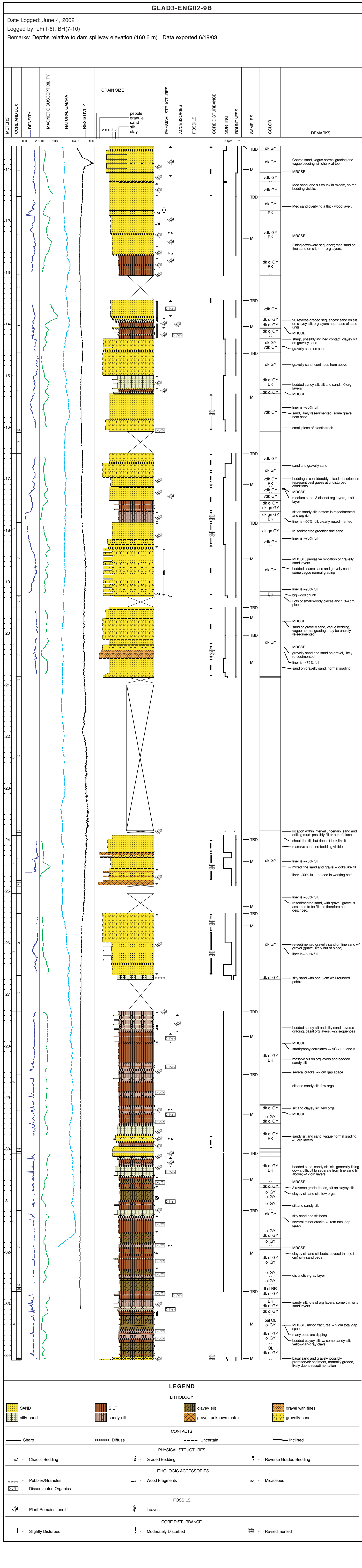
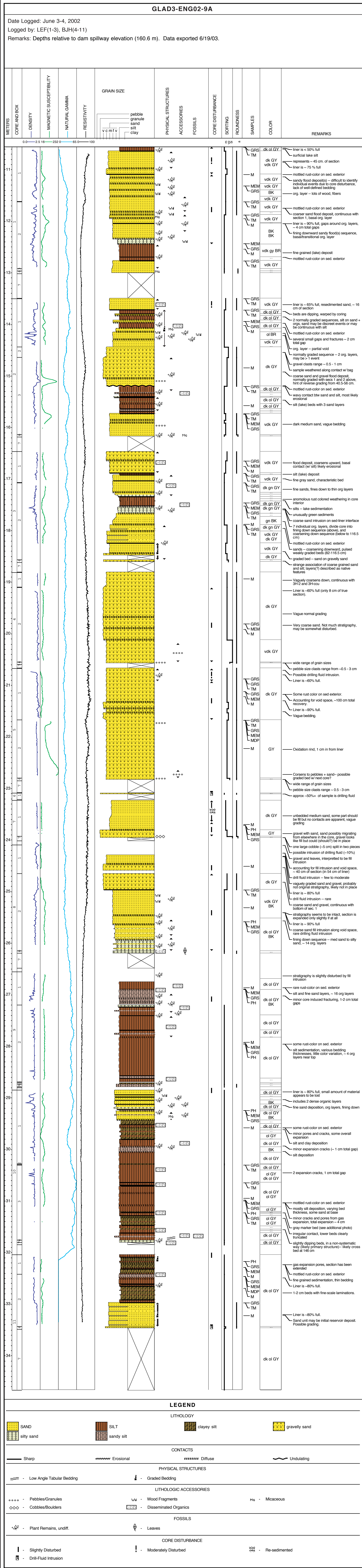


Plate 8. Stratigraphic and log data from site 8 (part 1). Boreholes are ordered approximately from west to east. Note that 8C is a continuation of 8B. The borehole-log data from the uncored part of the top of 8C are displayed.

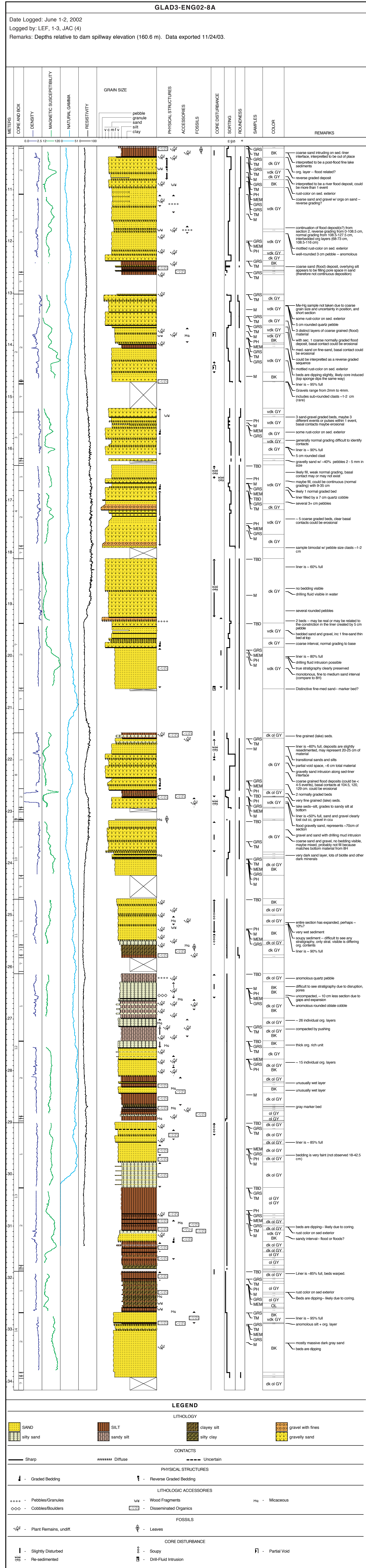
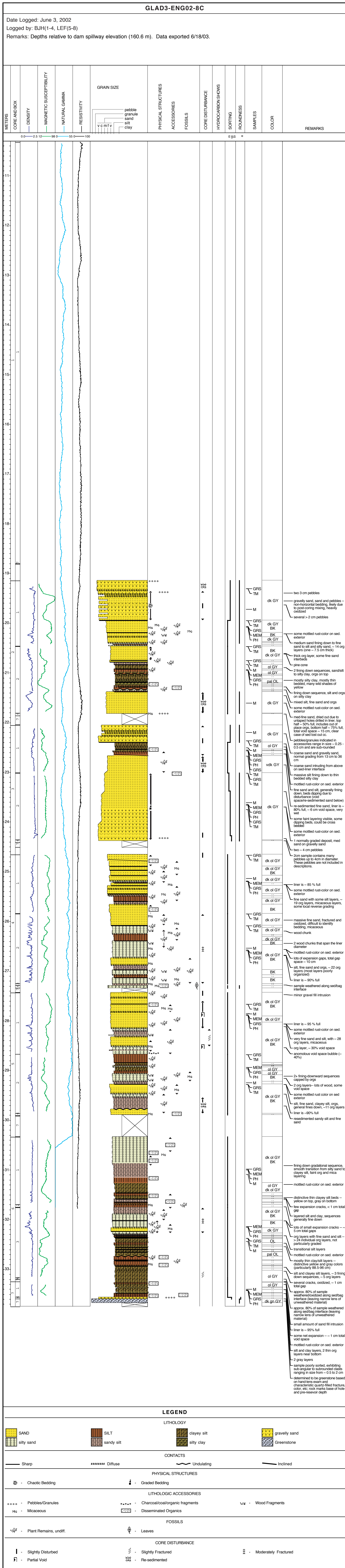
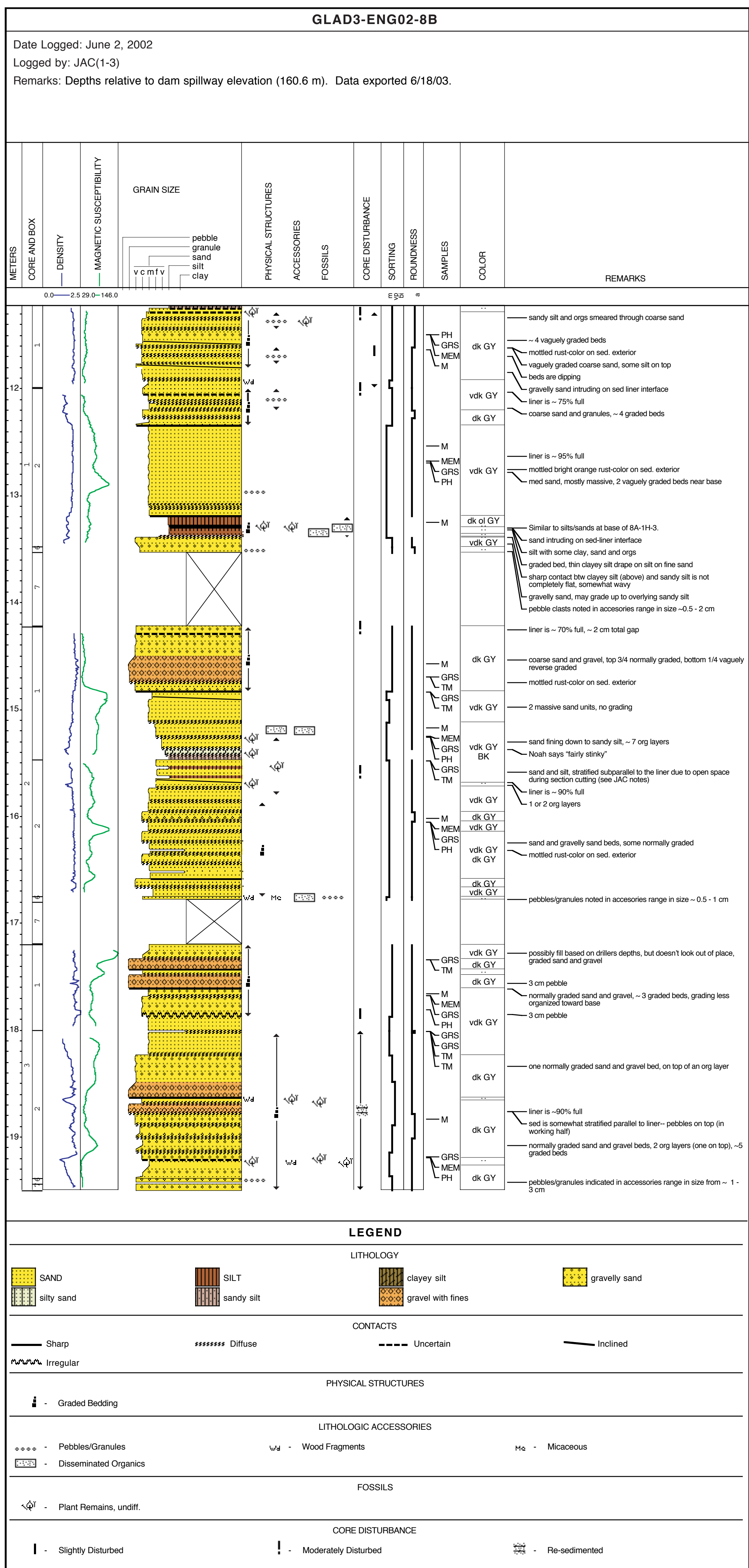


Plate 9. Stratigraphic and log data from site 3, just downstream from site 8 (part 2). Boreholes are ordered approximately from west to east.

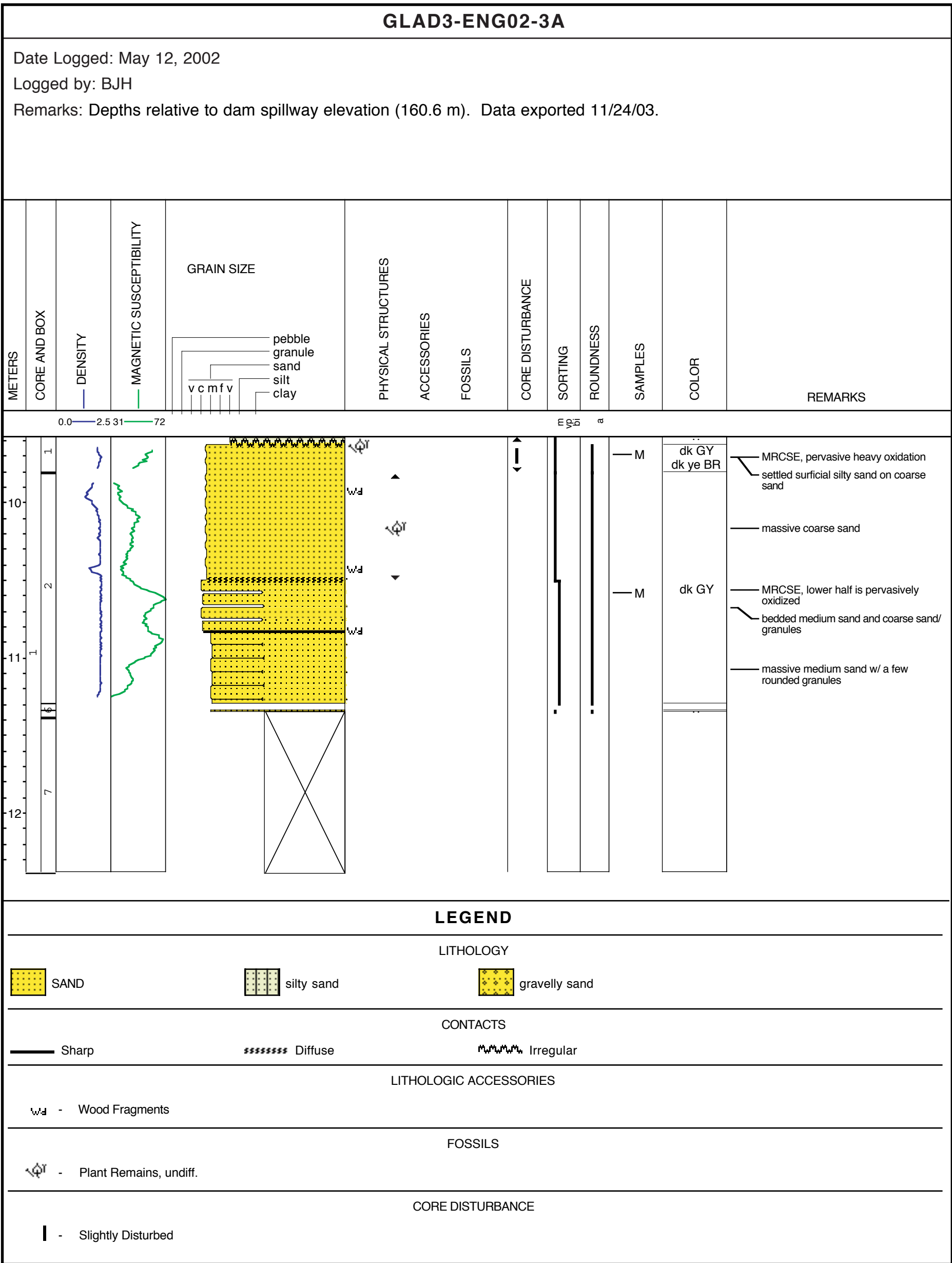
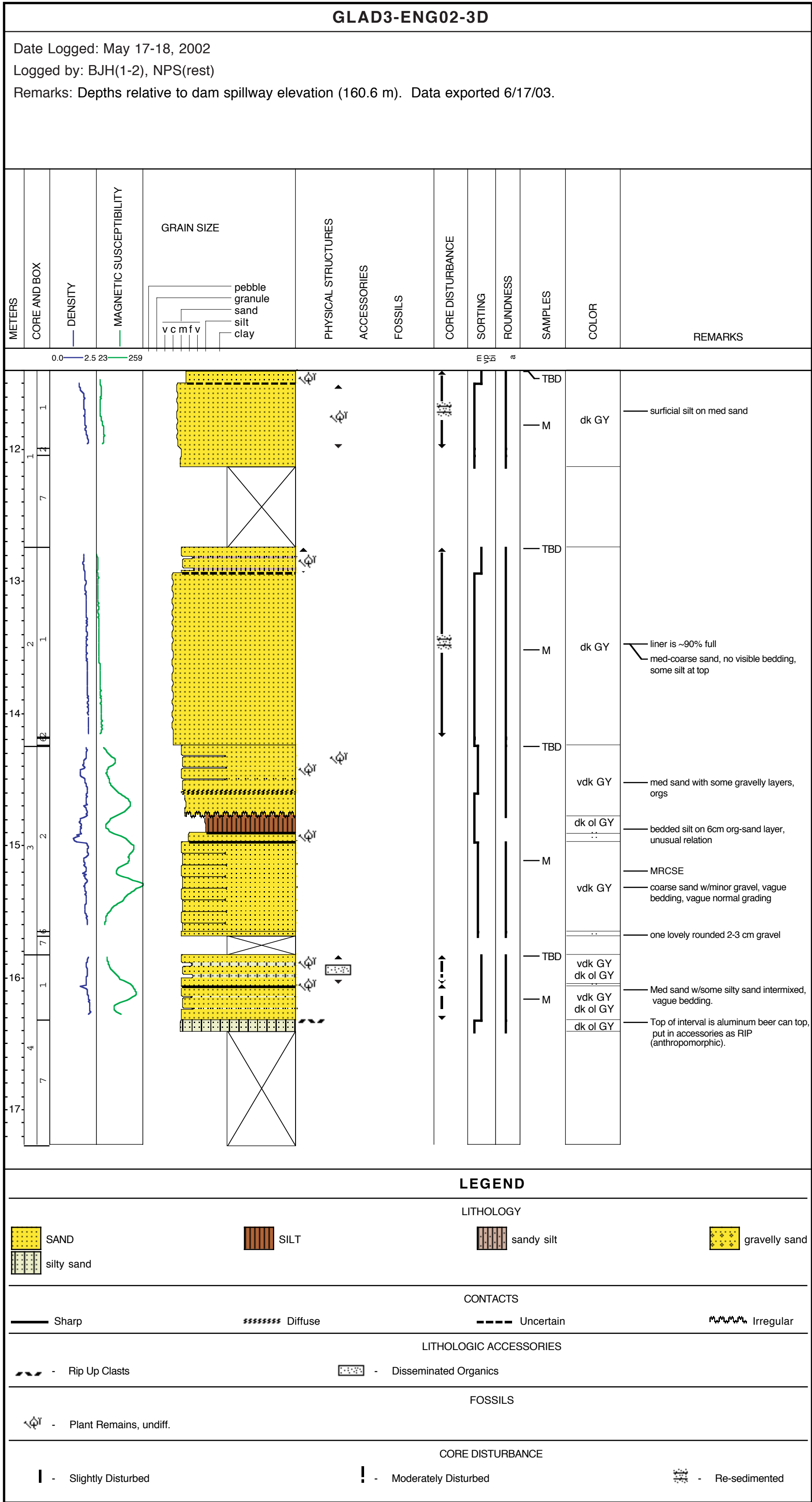
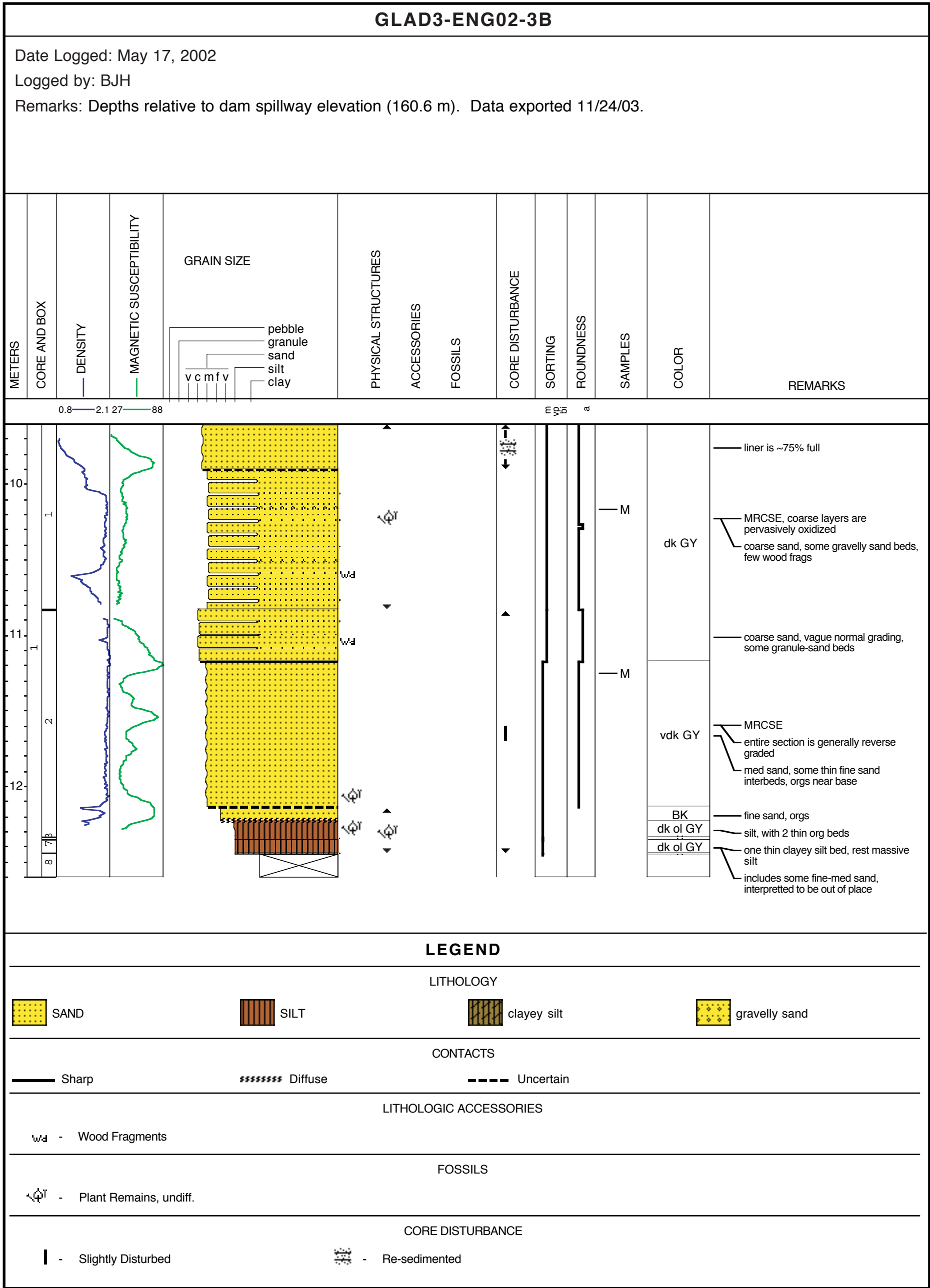


Plate 10. Stratigraphic and log data from site 2 (borehole 2B).

