



A Dataset of Magnetic Susceptibility, Metalization, and Alteration for Samples from the Stinkingwater Mining District, Absaroka Mountains, Wyoming

By **Mark E. Gettings¹**

Open-File Report 2004-1253

2004

Use of any trade, firm or product name is for descriptive purposes only and does not constitute endorsement by the U.S. Government.

**U.S. GEOLOGICAL SURVEY
U.S. DEPARTMENT OF THE INTERIOR**

¹*U.S. Geological Survey, 520 N. Park Ave., Tucson, AZ 85719*

Table of Contents

Abstract	3
Magnetic susceptibility measurements dataset	3
References Cited	4
Figure 1. Geologic sketch map of the Stinkingwater mining area showing the location of the drillholes, lithology, alteration class, and topography.	5
Tables	
1. Table of measured magnetic susceptibility, alteration class, and selected chemical analysis for the 700 samples from drillholes.	6
2. Table of measured magnetic susceptibility, alteration class, and selected chemical analysis for the 700 samples from drillholes in all-numeric format.	23

Abstract

Magnetic susceptibility was measured for 700 samples of drill core from thirteen drill holes in the porphyry copper-molybdenum deposit of the Stinkingwater mining district in the Absaroka Mountains, Wyoming. Measurements were performed on splits from 3 m (10 ft) sections of pulverized core. The measurements constitute a useful dataset because the same samples were studied to identify their alteration state and have been subjected to chemical analysis. Tables of the data are included in this report.

Magnetic susceptibility measurements dataset

For this study, 700 samples from thirteen boreholes (locations shown on fig. 1) in the Stinkingwater district of the Needle Creek igneous center in the Absaroka Range of northwestern Wyoming (Fisher, 1983) were measured for magnetic susceptibility. These samples were splits from 3m (10 ft) sections of pulverized drill core that were also subjected to chemical analyses (Fisher, 1971); thus, the susceptibility measurements represent a mean value for each 3 m (10 ft) interval. Studies of alteration and mineralization were also carried out (Fisher, 1983; Phelps-Dodge Corporation, written communication, 1968) so that a dataset of chemical composition, alteration class and magnetic susceptibility was obtained. The measurements were made in the laboratory using a computer controlled inductive bridge instrument with a shielded coaxial sensing coil. Samples were measured in their cardboard cylindrical storage containers (about 3 cm in diameter and 5 cm in length) inserted into the measurement coil. The instrument produces a mean magnetic susceptibility and a standard deviation of magnetic susceptibility for each sample and has a measurement precision 2×10^{-7} cgs/cm³ magnetic susceptibility. For each sample, a reading with an empty container, a reading with the sample, and a reading with an empty container were obtained, thus determining a linear drift correction with time. A single arbitrary sample was chosen as a reference and repeatedly measured throughout the duration of susceptibility measurements. This sample was measured 165 times yielding a mean magnetic susceptibility of 2.607×10^{-6} cgs/g and a standard deviation of 2.668×10^{-7} cgs/g. Susceptibility values are given per unit mass rather than per unit volume in this paper because the samples were finely ground powders.

The Stinkingwater district is a hydrothermally altered and mineralized area in the Needle Creek igneous center (fig. 1). The rocks, alteration, and mineralization events are Eocene (approximately 40 Ma) and Upper Miocene in age (Fisher, 1983). The two intrusive units, the Needle Creek granodiorite and the Crater Mountain dacite (fig. 1) are both altered and mineralized, but the Crater Mountain dacite is most extensively mineralized in a zone where it is highly shattered (Fisher, 1972, 1983), presumably by a subsurface intrusive that was the source of the porphyry rocks. Geomorphically, the Crater Mountain dacite behaves as a fractured and incompetent unit, and displays many landslides and gravity slumps (Fisher, 1972). The dacite composition and permeability from fracturing make it a good host for hydrothermal alteration and mineralization.

The alteration pattern is a typical concentric zoned pattern ranging from propylitic in the outermost zone to phyllic alteration with patchy potassic alteration in the center (fig. 1). The drillholes were mostly located in the more highly altered phyllic and potassic zones (fig. 1), but several holes penetrated more than one zone vertically. Drillhole S8 penetrated 30.5 m (100 ft) in Crater Mountain dacite that was essentially unaltered. Although some alteration minerals are present (Fisher, 1972), they are volumetrically small and the rock penetrated by the drillhole is unmineralized (Phelps-Dodge Corporation, written communication, 1968). The hole thus represents a sample of unaltered rock and the pre-mineralization magnetic susceptibility. A total of 15 samples from this hole were measured and the results show a quite homogeneous magnetic

susceptibility. The measured maximum, minimum, mean, and standard deviation magnetic susceptibility were 4.78×10^{-4} , 3.18×10^{-4} , 4.03×10^{-4} , and 4.73×10^{-5} cgs units per unit mass. Thus, a value of 4.0×10^{-4} cgs/g magnetic susceptibility was taken as representative for unaltered and unmineralized Crater Mountain dacite.

Table 1 presents the results of the measurements and the compiled alteration and chemical analysis data. Table 2 presents the same data in an all-numeric format convenient for analysis software that does not accept alphanumeric data for values at or beyond detection limits.

The data in tables 1 and 2 have the following format. The data fields are in the following order: UTM easting (m); UTM northing (m); altitude (ft); magnetic susceptibility (cgs/unit mass); standard deviation of magnetic susceptibility (cgs/unit mass); lithology code; texture code; oxidized/enriched code; alteration class code; hole group code; hole number; sample number; mercury content (Hg, ppm); copper content (Cu, ppm); molybdenum content (Mo, ppm); total iron content (Fe, %); titanium content (Ti, %); silver content (Ag, ppm); and gold content (Au, ppm). UTM coordinates are for zone 12N.

The codes are as follows. Lithology codes are: 1-Crater Mountain dacite; 2-dike; 3-Needle Mountain granodiorite; 4-Needle Mountain granodiorite (?); and 9-undetermined.

Texture codes are: 1-fine grained; 2-porphyry; 3-phaneritic(crystalline); and 9- undetermined. The oxidized/enriched codes are: 1-oxidized; 2- protoore; 3-enriched; and 9-unknown. The codes for alteration class are; 1-propylitic; 2- phyllic; 3- potassic; and 9-undetermined. The hole group codes are: N-Needle Creek; and S-Stinkingwater.

Table 1 contains original analytic data for Hg, Cu, Mo, Fe, Ti, Ag, and Au using codes N or N() - not detected or not detected at limits shown; L or L() - detected but below limit of determination or limit shown. Table 2 is identical to Table 1 except that the "not detected" and "less than" (N and L) codes have been replaced with arbitrary numbers to allow plotting. For gold, not detected (N or N(.05)) was assigned 0.01; less than (L or L(.05)) was assigned 0.015. For silver, not detected (N or N(.05)) was assigned 0.01; less than (L or L(.5)) was assigned 0.45.

The data in tables 1 and 2 are also available as separate text files "stwr_drillholes_data_final" and "alldata.numeric.final".

References cited

- Fisher, F.S., 1971, Geochemical data and sample locality maps from the Stinkingwater Mining Region, Park County, Wyoming: U.S. Geological Survey Report USGS-GD-71-003; available only from U.S. Dept. Commerce Natl. Tech. Inf. Service, Springfield, Va., as Rept. PB1-96987.
- Fisher, F.S., 1972, Tertiary mineralization and hydrothermal alteration in the Stinkingwater Mining Region, Park County, Wyoming: U.S. Geological Survey Bulletin 1332-C, 33 p.
- Fisher, F.S., 1983, Porphyry copper deposits associated with the Needle Creek igneous center, southern Absaroka Mountains, Wyoming, in Symposium volume, 1982, Genesis of Rocky Mountain Ore Deposits: Denver Region Exploration Geologists Society, November 1982, p. 87-93.

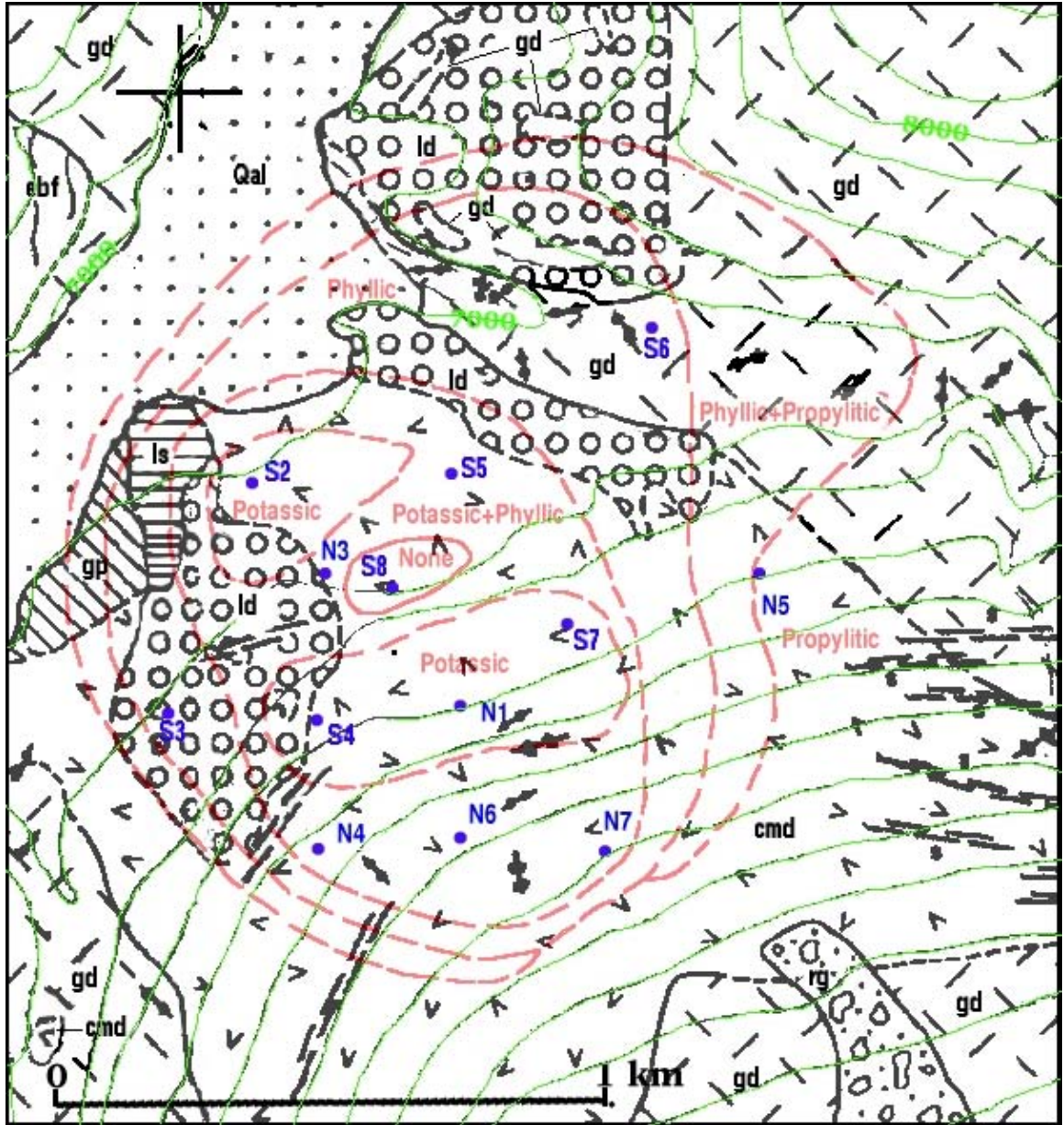


Figure 1. Geologic map of the Stinkingwater Mining region, Absaroka Mountains, Wyoming (Fisher, 1972). Rock unit abbreviations: ebf, basalt flows of the Eocene Trout Peak formation; gd, Miocene Needle Mountain granodiorite; cmd, Miocene Crater Mountain dacite; ld, Holocene landslide deposits; ls, Holocene limonitic soil; gp, Holocene gypsite; rg, Holocene rock glacier; and Qal, Holocene alluvium. Lines with two balls on them are dikes, stringers, or veins; double dashed lines are fracture systems and faults. North is to the top of the figure and the tick mark in the upper left is 44° 2' 23.8" N latitude and 109° 38' 38.3" W longitude. The points labeled, for example, "S2" or "N1" are the locations of exploration drillholes whose core was measured for magnetic susceptibility for this study. The red lines show the approximate boundaries of the zones of hydrothermal rock alteration. Green lines show approximate topographic contour locations of altitude in ft at a 200 ft interval.

Table 1. Measured magnetic susceptibility, alteration class, and selected chemical analysis for the 700 samples from drillholes from the Stinkingwater Mining district, Absaroka Mountains, Wyoming. Values are UTM e, UTM n, altitude(ft),magnetic susceptibility (cgs/g), standard deviation of magnetic susceptibility (cgs/g), lithology code, texture code, oxidized/enriched code, alteration class code, borehole group code, hole number, sampl number, Hg(ppm), Cu(ppm),Mo(ppm), total Fe(%), Ti(%), Ag(ppm), Au(ppm). N or N() means not detected or not detected at the level in parentheses; L or L() means less than or less than the level in parentheses. See text for explanation of codes; UTM coordinates are zone 12N.

These data are available in ASCII form at <http://pubs.usgs.gov/of/2004/1253/table1.txt>

The files http://pubs.usgs.gov/of/2004/1253/datafile_format.txt and <http://pubs.usgs.gov/of/2004/1253/heading.txt> are ASCII files describing the data format and headings.

609121.5	4875939.6	7603	2.554834E-06	2.936252E-08	1	3	1	2	N	1	1	0.30	55	150	2	.3	1.5	N(.05)
609121.5	4875939.6	7593	1.116083E-05	8.680806E-08	1	3	1	2	N	1	2	0.08	90	150	3	.3	1	N(.05)
609121.5	4875939.6	7583	2.155997E-06	4.052591E-08	1	3	1	2	N	1	3	0.10	85	150	3	.3	.5	N(.05)
609121.5	4875939.6	7573	2.694983E-06	1.739543E-08	1	3	1	2	N	1	4	0.08	120	200	3	.3	.5	N(.05)
609121.5	4875939.6	7563	1.626001E-06	7.12903E-08	1	3	1	2	N	1	5	0.10	85	300	3	.3	.5	N(.05)
609121.5	4875939.6	7523	3.949657E-06	2.47861E-06	1	3	1	2	N	1	9	0.06	150	300	2	.3	1	N(.05)
609121.5	4875939.6	7523	2.713721E-06	2.568007E-07	1	3	1	2	N	1	9	0.06	150	300	2	.3	1	N(.05)
609121.5	4875939.6	7513	2.002277E-06	1.122869E-07	1	2	1	2	N	1	10	0.10	120	100	1.5	.3	1	N(.05)
609121.5	4875939.6	7503	2.396971E-06	1.612762E-08	1	2	1	2	N	1	11	0.08	250	150	3	.3	1	L(.05)
609121.5	4875939.6	7493	2.807801E-06	7.87546E-08	1	2	1	2	N	1	12	0.02	320	200	5	.3	1	L(.05)
609121.5	4875939.6	7483	2.352235E-06	1.512285E-07	1	2	1	2	N	1	13	0.06	130	150	3	.3	.5	N(.05)
609121.5	4875939.6	7473	3.112092E-06	1.064787E-07	1	2	1	2	N	1	14	0.10	240	700	3	.2	.5	N(.05)
609121.5	4875939.6	7463	2.938187E-06	9.614186E-08	1	2	1	2	N	1	15	0.06	150	300	3	.3	N	N(.05)
609121.5	4875939.6	7453	2.435118E-06	2.393517E-08	1	2	1	2	N	1	16	0.04	130	300	3	.3	.5	N(.05)
609121.5	4875939.6	7443	2.232361E-06	3.272604E-07	1	2	1	2	N	1	17	0.06	220	300	3	.3	1	N(.05)
609121.5	4875939.6	7433	2.299899E-06	1.855749E-07	1	2	1	2	N	1	18	0.08	100	500	3	.3	3	N(.05)
609121.5	4875939.6	7413	3.656154E-06	2.43275E-07	1	3	1	2	N	1	20	0.04	350	150	7	.2	1	N(.05)
609121.5	4875939.6	7403	3.46172E-06	5.018922E-07	1	3	1	2	N	1	21	0.06	290	200	5	.2	.5	N(.05)
609121.5	4875939.6	7393	3.233902E-06	9.018574E-08	1	3	1	2	N	1	22	0.04	350	200	5	.3	1	N(.05)
609121.5	4875939.6	7383	2.782429E-06	1.537564E-07	1	3	1	2	N	1	23	0.04	480	70	5	.2	1	N(.05)
609121.5	4875939.6	7373	3.063128E-06	4.241098E-08	1	3	1	2	N	1	24	0.08	350	300	7	.3	.7	N(.05)
609121.5	4875939.6	7363	1.569503E-06	6.370892E-07	1	3	1	2	N	1	25	0.06	340	300	3	.3	.5	N(.05)
609121.5	4875939.6	7343	1.352578E-06	2.049123E-07	1	3	3	2	N	1	27	0.06	3900	300	2	.2	2	N(.05)
609121.5	4875939.6	7333	3.037918E-06	2.921192E-06	1	3	3	2	N	1	28	0.04	4900	300	3	.3	1.5	N(.05)
609121.5	4875939.6	7333	1.73612E-06	6.685621E-07	1	3	3	2	N	1	28	0.04	4900	300	3	.3	1.5	N(.05)
609121.5	4875939.6	7323	1.753769E-06	3.324467E-07	1	3	3	2	N	1	29	0.02	4000	150	2	.3	1	N(.05)
609121.5	4875939.6	7313	1.951879E-06	5.987416E-07	1	3	3	2	N	1	30	0.06	2700	70	2	.2	1	N(.05)
609121.5	4875939.6	7303	1.391169E-06	3.336056E-07	1	3	3	2	N	1	31	0.10	3300	100	2	.3	1	N(.05)
609121.5	4875939.6	7243	3.198825E-06	1.600256E-07	1	3	2	2	N	1	37	0.06	3300	200	3	.2	1	N(.05)

609121.5 4875939.6 7233 1.896758E-06 4.860253E-08 1 3 2 2 N 1 38 0.08 2000 300 2 .3 .5 N(.05)
609121.5 4875939.6 7223 2.374395E-06 5.506236E-08 1 3 2 2 N 1 39 0.06 2300 300 2 .2 1 N(.05)
609121.5 4875939.6 7213 2.558427E-06 3.794349E-07 1 3 2 2 N 1 40 0.04 2800 100 3 .3 1 N(.05)
609121.5 4875939.6 7203 2.311801E-06 1.92928E-07 1 3 2 2 N 1 41 0.02 2600 150 2 .3 .5 N(.05)
609121.5 4875939.6 7193 1.65705E-06 5.962515E-07 1 3 2 2 N 1 42 0.06 2000 70 1.5 .3 .7 L(.05)
609121.5 4875939.6 7184.5 3.865458E-06 6.732548E-06 1 3 2 2 N 1 43 0.02 2200 100 2 .5 1 N(.05)
608873.0 4876142.0 7217 1.225769E-04 6.306202E-07 1 2 2 3 N 3 44 0.02 170 15 2 .3 .5 N(.05)
608873.0 4876142.0 7208 1.631122E-04 4.272244E-07 1 2 2 3 N 3 45 0.02 290 10 3 .5 .5 N(.05)
608873.0 4876142.0 7198 2.614733E-04 6.15113E-07 1 2 2 3 N 3 46 0.04 650 70 2 .3 .7 N(.05)
608873.0 4876142.0 7188 4.384847E-04 1.086048E-06 1 2 2 3 N 3 47 0.02 1200 0 3 .7 .5 N(.05)
608873.0 4876142.0 7178 2.926848E-04 2.119949E-06 1 2 2 3 N 3 48 0.04 2000 5 3 .7 .7 N(.05)
608873.0 4876142.0 7168 3.624313E-04 1.215701E-06 1 2 2 3 N 3 49 0.02 740 0 3 .5 .5 N(.05)
608873.0 4876142.0 7158 2.395881E-04 2.231197E-06 1 2 2 3 N 3 50 0.02 1300 0 2 .5 .5 N(.05)
608873.0 4876142.0 7148 2.54929E-04 6.447229E-07 1 2 2 3 N 3 51 0.02 370 15 2 .7 L N(.05)
608873.0 4876142.0 7138 3.385178E-05 1.650938E-07 1 2 2 3 N 3 52 0.20 450 7 2 .3 3 N(.05)
608873.0 4876142.0 7128 1.066505E-04 1.982471E-07 1 2 2 3 N 3 53 0.02 1700 10 3 .7 1.5 N(.05)
608873.0 4876142.0 7118 2.086506E-04 6.563281E-07 1 2 2 3 N 3 54 0.06 2300 0 3 .5 2 N(.05)
608873.0 4876142.0 7108 4.277326E-05 1.771766E-07 1 2 2 3 N 3 55 0.02 1100 0 1 .3 N N(.05)
608873.0 4876142.0 7098 7.106361E-05 3.802556E-06 1 2 2 3 N 3 56 0.06 950 15 1.5 .7 L N(.05)
608873.0 4876142.0 7088 1.854339E-04 3.358551E-07 1 2 2 3 N 3 57 0.04 1100 0 3 .7 1 L(.05)
608873.0 4876142.0 7078 9.316193E-05 2.225218E-07 1 2 2 3 N 3 58 0.12 2100 0 2 .5 1 N(.05)
608873.0 4876142.0 7068 2.033675E-04 7.071382E-07 1 2 2 3 N 3 59 0.02 1300 0 2 .5 .7 N(.05)
608873.0 4876142.0 7038 1.515596E-04 2.107343E-07 1 2 2 3 N 3 62 0.02 480 70 1.5 .7 N N(.05)
608879.9 4875712.9 7714.5 2.114638E-05 5.455993E-08 1 3 3 2 N 4 63 0.06 1100 15 3 .7 1.5 N(.05)
608879.9 4875712.9 7705 2.999313E-06 1.847854E-07 1 3 3 2 N 4 64 0.02 1300 15 2 .15 .5 N(.05)
608879.9 4875712.9 7695 3.876135E-06 9.726466E-07 1 3 3 2 N 4 65 0.02 1300 0 5 .3 N N(.05)
608879.9 4875712.9 7695 4.566522E-06 1.934664E-07 1 3 3 2 N 4 65 0.02 1300 0 5 .3 N N(.05)
608879.9 4875712.9 7685 2.933274E-06 5.847156E-08 1 3 3 2 N 4 66 0.02 2600 0 3 .3 .5 N(.05)
608879.9 4875712.9 7675 1.836612E-06 5.882004E-08 1 3 3 2 N 4 67 0.02 1800 0 3 .2 .5 N(.05)
608879.9 4875712.9 7665 1.345865E-06 3.8496E-08 1 3 3 2 N 4 68 0.08 2100 20 5 .3 .5 N(.05)
608879.9 4875712.9 7655 2.237614E-06 4.178516E-08 1 3 3 2 N 4 69 0.06 1600 30 5 .15 L N(.05)
608879.9 4875712.9 7645 1.996478E-06 4.55111E-08 1 3 3 2 N 4 70 0.50 1300 10 10 .2 N N(.05)
608879.9 4875712.9 7635 1.894504E-06 8.821639E-08 1 2 3 2 N 4 71 0.14 1700 70 5 .2 .7 L(.05)
608879.9 4875712.9 7625 1.887904E-06 7.251347E-07 1 2 3 2 N 4 72 0.10 3000 15 3 .2 .7 L(.05)
608879.9 4875712.9 7615 1.740938E-05 1.373567E-07 1 2 3 2 N 4 73 0.04 2000 0 10 .15 N L(.05)
608879.9 4875712.9 7605 2.904898E-06 5.34132E-08 1 2 3 2 N 4 74 0.02 1300 0 7 .2 N L(.05)
608879.9 4875712.9 7615 1.73379E-05 2.027633E-07 1 2 3 2 N 4 73 0.04 2000 0 10 .15 N L(.05)
608879.9 4875712.9 7595 2.298653E-06 7.240396E-08 1 2 3 2 N 4 75 0.02 2500 15 5 .15 L L(.05)
608879.9 4875712.9 7585 2.097799E-06 8.602643E-08 1 3 3 2 N 4 76 0.08 2400 5 3 .2 .5 L(.05)
608879.9 4875712.9 7575 1.988147E-06 1.260799E-07 1 3 3 2 N 4 77 0.04 2800 50 3 .15 .5 L(.05)
608879.9 4875712.9 7565 5.293146E-06 1.57993E-07 1 3 3 2 N 4 78 0.16 2100 20 3 .3 N L(.05)
608879.9 4875712.9 7555 3.130043E-06 4.671954E-08 1 1 3 2 N 4 79 0.02 1900 7 3 .3 .5 L(.05)

608879.9 4875712.9 7545 2.555076E-06 1.106443E-07 1 1 3 2 N 4 80 0.02 1300 15 3 .3 N L(.05)
608879.9 4875712.9 7535 1.452004E-06 3.855509E-08 1 1 3 2 N 4 81 0.04 1400 100 7 .3 N N(.05)
608879.9 4875712.9 7525 2.207092E-06 5.352137E-07 1 1 3 2 N 4 82 0.02 860 0 5 .2 N N(.05)
608879.9 4875712.9 7515 2.352005E-06 1.43551E-07 1 1 3 2 N 4 83 0.02 1500 50 7 .2 N N(.05)
608879.9 4875712.9 7505 2.542474E-06 1.16256E-07 1 3 3 2 N 4 84 0.02 1500 0 5 .3 N N(.05)
608879.9 4875712.9 7495 2.814844E-06 1.049124E-07 1 3 3 2 N 4 85 0.02 1400 50 3 .2 N N(.05)
608879.9 4875712.9 7485 1.971502E-05 3.204616E-08 1 3 3 2 N 4 86 0.04 2000 0 3 .2 N N(.05)
608879.9 4875712.9 7475 1.038036E-04 2.205171E-07 2 9 9 9 N 4 87 0.02 510 0 3 .2 N N(.05)
608879.9 4875712.9 7465 4.968179E-05 1.521452E-07 2 9 9 9 N 4 88 0.02 910 0 3 .3 N N(.05)
608879.9 4875712.9 7455 2.666777E-04 3.675969E-06 2 9 9 9 N 4 89 0.04 780 0 3 .3 N N(.05)
608879.9 4875712.9 7445 2.020932E-04 2.064766E-07 2 9 9 9 N 4 90 0.04 680 0 3 .2 N N(.05)
608879.9 4875712.9 7435 2.609202E-04 4.172325E-07 2 9 9 9 N 4 91 0.02 85 0 3 .2 N N(.05)
608879.9 4875712.9 7425 1.517612E-04 3.781491E-07 2 9 9 9 N 4 92 0.18 960 0 3 .2 1 .10
608879.9 4875712.9 7415 4.802835E-05 3.780757E-07 1 3 3 2 N 4 93 0.02 600 0 3 .2 N N(.05)
608879.9 4875712.9 7405 4.049136E-06 3.349872E-07 1 3 3 2 N 4 94 0.04 2200 10 3 .15 .5 .05
608879.9 4875712.9 7395 2.539714E-06 1.243882E-07 1 3 3 2 N 4 95 0.04 2000 15 3 .15 1 N(.05)
608879.9 4875712.9 7385 1.273657E-04 3.391447E-07 2 9 9 9 N 4 96 0.02 1100 0 3 .3 N N(.05)
608879.9 4875712.9 7375 1.586537E-04 2.723287E-07 2 9 9 9 N 4 97 0.02 980 0 3 .3 N N(.05)
608879.9 4875712.9 7365 4.905386E-05 4.899288E-07 2 9 9 9 N 4 98 0.02 340 0 3 .3 3 .60
608879.9 4875712.9 7355 2.157393E-05 1.452863E-07 2 9 9 9 N 4 99 0.04 1100 0 3 .3 N N(.05)
608879.9 4875712.9 7345 1.154257E-04 5.153304E-07 1 3 2 2 N 4 100 0.02 730 15 5 .3 N N(.05)
608879.9 4875712.9 7335 8.118936E-06 5.672726E-07 1 3 2 2 N 4 101 0.04 1000 15 3 .15 N N(.05)
608879.9 4875712.9 7325 3.840327E-07 3.076636E-06 1 3 2 2 N 4 102 0.02 1500 30 5 .15 N N(.05)
608879.9 4875712.9 7325 4.966387E-06 2.973244E-06 1 3 2 2 N 4 102 0.02 1500 30 5 .15 N N(.05)
608879.9 4875712.9 7315 3.161761E-06 4.716489E-07 1 3 2 2 N 4 103 0.08 1300 50 3 .2 N N(.05)
608879.9 4875712.9 7305 2.584996E-06 1.014249E-07 1 3 2 2 N 4 104 0.08 2100 20 3 .15 L N(.05)
608879.9 4875712.9 7295 3.192753E-06 3.603388E-08 1 3 2 2 N 4 105 0.06 1200 10 3 .15 N N(.05)
608879.9 4875712.9 7285 3.359446E-06 4.987054E-07 1 3 2 2 N 4 106 0.06 1600 10 2 .15 .5 N(.05)
608879.9 4875712.9 7276.5 1.616926E-06 1.596118E-07 1 3 2 2 N 4 107 0.06 1800 30 3 .2 N N(.05)
609624.6 4876139.6 7575 1.498671E-05 6.508073E-07 1 1 2 3 N 5 108 0.04 1700 30 5 .3 3 N(.05)
609624.6 4876139.6 7564 2.911907E-05 6.601231E-08 1 1 2 3 N 5 109 0.02 1700 0 7 .3 .7 L(.05)
609624.6 4876139.6 7554 2.482959E-05 8.51129E-08 1 1 2 3 N 5 110 0.02 1600 10 7 .3 2 L(.05)
609624.6 4876139.6 7544 1.813098E-05 2.945101E-08 1 1 2 3 N 5 111 0.06 1300 0 5 .5 1 L(.05)
609624.6 4876139.6 7534 6.529596E-06 1.326473E-07 1 1 2 3 N 5 112 0.02 2700 30 5 .3 3 L(.05)
609624.6 4876139.6 7524 6.157584E-06 1.644885E-07 1 1 2 3 N 5 113 0.02 1600 30 3 .3 1.5 L(.05)
609624.6 4876139.6 7514 6.459742E-06 2.869789E-07 1 2 2 1 N 5 114 0.02 3100 30 3 .3 2 L(.05)
609624.6 4876139.6 7504 6.704679E-06 5.759912E-08 1 2 2 1 N 5 115 0.02 1300 10 5 .3 .5 N(.05)
609624.6 4876139.6 7494 2.668176E-06 8.214975E-07 1 2 2 1 N 5 116 0.02 600 0 3 .15 L N(.05)
609624.6 4876139.6 7484 3.564367E-06 1.839115E-07 1 2 2 1 N 5 117 0.02 1100 0 3 .2 L N(.05)
609624.6 4876139.6 7474 8.101746E-06 1.385012E-07 1 2 2 1 N 5 118 0.02 750 15 3 .2 L N(.05)
609624.6 4876139.6 7464 3.987996E-06 5.730094E-08 1 2 2 1 N 5 119 0.04 710 0 5 .15 1.5 N(.05)
609624.6 4876139.6 7454 3.815929E-06 8.902903E-08 1 2 2 1 N 5 120 0.02 460 0 3 .2 N N(.05)

609624.6 4876139.6 7444 3.674906E-06 7.658819E-08 1 2 2 1 N 5 121 0.04 320 70 3 .2 N L(.05)
609624.6 4876139.6 7434 2.810993E-06 1.551313E-07 1 2 2 1 N 5 122 0.12 450 100 3 .15 N L(.05)
609624.6 4876139.6 7424 3.705568E-06 1.901815E-08 1 2 2 1 N 5 123 0.04 410 70 3 .15 N N(.05)
609624.6 4876139.6 7414 2.731181E-06 6.596302E-08 1 2 2 1 N 5 124 0.10 1800 50 3 .2 .7 N(.05)
609624.6 4876139.6 7404 2.775589E-06 4.388926E-07 1 2 2 2 N 5 125 0.20 1900 10 3 .3 3 N(.05)
609624.6 4876139.6 7394 2.714923E-06 6.845825E-07 1 2 2 2 N 5 126 0.02 1100 0 3 .15 .5 N(.05)
609624.6 4876139.6 7384 4.547203E-06 1.428708E-07 1 2 2 2 N 5 127 0.08 600 10 3 .3 .5 N(.05)
609624.6 4876139.6 7374 3.310944E-06 1.118557E-08 1 2 2 2 N 5 128 0.08 630 0 3 .15 .5 N(.05)
609624.6 4876139.6 7364 4.12951E-06 1.802368E-07 1 2 2 2 N 5 129 0.04 1300 20 3 .15 .5 N(.05)
609624.6 4876139.6 7354 3.09914E-06 3.951004E-07 1 2 2 2 N 5 130 0.10 1700 15 3 .15 1 N(.05)
609624.6 4876139.6 7344 2.455637E-06 4.316482E-08 1 2 2 2 N 5 131 0.04 700 10 2 .15 L N(.05)
609624.6 4876139.6 7335 3.126087E-06 6.780009E-07 1 2 2 2 N 5 132 0.10 2200 0 3 .15 1.5 N(.05)
609131.6 4875713.2 8140.5 1.245071E-06 1.021049E-07 1 2 1 2 N 6 182 0.14 210 0 2 .15 N N(.05)
609131.6 4875713.2 8132 1.639264E-06 9.820762E-08 1 2 1 2 N 6 183 0.06 55 0 2 .2 N L(.05)
609131.6 4875713.2 8122 1.514676E-06 7.594314E-08 1 2 1 2 N 6 184 0.08 25 0 2 .2 N N(.05)
609131.6 4875713.2 8112 1.917704E-06 6.241165E-08 1 2 1 2 N 6 185 0.06 410 0 3 .2 1 N(.05)
609131.6 4875713.2 8102 1.257793E-06 6.343898E-08 1 2 1 2 N 6 186 0.06 40 0 3 .2 N N(.05)
609131.6 4875713.2 8092 3.669259E-06 2.525327E-08 1 3 1 2 N 6 187 0.04 380 100 5 .5 L N(.05)
609131.6 4875713.2 8082 2.590583E-06 3.793068E-08 1 3 1 2 N 6 188 0.06 760 50 3 .3 L N(.05)
609131.6 4875713.2 8072 3.139642E-06 2.563253E-08 1 3 1 2 N 6 189 0.06 490 20 3 .3 L N(.05)
609131.6 4875713.2 8062 3.069414E-06 2.598123E-08 1 3 1 2 N 6 190 0.04 90 20 3 .2 N N(.05)
609131.6 4875713.2 8052 -1.289443E-06 6.043945E-06 1 3 1 2 N 6 191 0.10 60 30 2 .2 N N(.05)
609131.6 4875713.2 8042 2.441664E-06 1.361401E-07 1 3 1 2 N 6 192 0.06 90 70 3 .15 L N(.05)
609131.6 4875713.2 8022 2.72108E-06 3.537503E-07 1 3 1 2 N 6 194 0.06 100 100 2 .2 N N(.05)
609131.6 4875713.2 8002 2.139329E-06 2.588088E-08 1 3 1 2 N 6 196 0.20 310 50 3 .15 N N(.05)
609131.6 4875713.2 7992 2.597305E-06 1.079591E-08 1 3 1 2 N 6 197 0.16 240 50 2 .15 1 N(.05)
609131.6 4875713.2 7982 2.453267E-06 8.521411E-08 1 3 1 2 N 6 198 0.12 280 70 3 .2 .5 N(.05)
609131.6 4875713.2 7972 1.798866E-06 2.510601E-07 1 3 1 2 N 6 199 0.02 310 10 3 .2 N N(.05)
609131.6 4875713.2 7962 3.347082E-06 2.176687E-08 1 3 1 2 N 6 200 0.16 630 10 5 .2 N N(.05)
609131.6 4875713.2 7952 3.65527E-06 1.013816E-08 1 3 1 2 N 6 201 0.10 740 15 3 .2 N L(.05)
609131.6 4875713.2 7942 2.176792E-06 2.348475E-08 1 3 1 2 N 6 202 0.06 680 150 5 .15 N L(.05)
609131.6 4875713.2 7932 2.0994E-06 3.790923E-08 1 2 2 3 N 6 203 0.08 790 20 5 .2 N L(.05)
609131.6 4875713.2 7922 3.076443E-06 2.353585E-07 1 2 2 3 N 6 204 0.12 3000 30 3 .2 L N(.05)
609131.6 4875713.2 7912 3.768908E-06 5.606164E-07 1 2 2 3 N 6 205 0.06 1200 10 3 .2 N N(.05)
609131.6 4875713.2 7902 2.104529E-06 4.312622E-07 1 3 2 2 N 6 206 0.04 1700 0 7 .2 N L(.05)
609131.6 4875713.2 7892 1.780634E-06 1.89271E-07 1 3 2 2 N 6 207 0.14 490 20 7 .15 N N(.05)
609131.6 4875713.2 7882 2.191291E-06 1.191879E-07 1 3 2 2 N 6 208 0.02 1500 0 3 .15 N N(.05)
609131.6 4875713.2 7872 2.986576E-06 9.693699E-08 1 3 2 2 N 6 209 0.04 780 70 5 .15 N N(.05)
609131.6 4875713.2 7862 1.31911E-06 1.745997E-08 1 3 2 2 N 6 210 0.08 2600 0 3 .15 L N(.05)
609131.6 4875713.2 7852 2.161216E-06 3.101554E-07 1 3 2 2 N 6 211 0.04 1200 20 3 .1 N N(.05)
609131.6 4875713.2 7842 2.19608E-06 4.402897E-07 1 3 2 2 N 6 212 0.16 1500 15 3 .15 N N(.05)
609131.6 4875713.2 7832 2.263366E-06 5.556016E-07 1 3 2 2 N 6 213 0.02 1300 0 3 .15 N N(.05)

609131.6 4875713.2 7822 2.590092E-06 1.765962E-07 1 3 2 2 N 6 214 0.10 1700 5 3 .1 N N(.05)
609131.6 4875713.2 7812 1.831538E-06 3.879694E-07 1 3 2 2 N 6 215 0.10 1900 0 3 .15 N L(.05)
609131.6 4875713.2 7802 1.082305E-06 5.984644E-07 1 3 2 2 N 6 216 0.06 1800 0 3 .15 N L(.05)
609131.6 4875713.2 7792 1.231907E-06 2.766017E-07 1 3 2 2 N 6 217 0.06 1900 0 3 .15 N N(.05)
609131.6 4875713.2 7782 1.254573E-06 4.873007E-08 1 3 2 2 N 6 218 0.06 1400 0 3 .15 N N(.05)
609131.6 4875713.2 7772 1.34155E-06 1.010202E-07 1 3 2 2 N 6 219 0.06 1500 0 3 .15 N N(.05)
609131.6 4875713.2 7752 1.811455E-06 2.625143E-07 1 3 2 2 N 6 221 0.04 630 10 3 .15 N N(.05)
609131.6 4875713.2 7742 9.777841E-06 2.940857E-07 1 3 2 2 N 6 222 0.04 2100 70 5 .2 .5 N(.05)
609131.6 4875713.2 7732 1.786451E-06 1.757489E-07 1 3 2 2 N 6 223 0.02 1000 30 3 .1 N N(.05)
609131.6 4875713.2 7722 2.119259E-06 1.242417E-06 1 3 2 2 N 6 224 0.04 1300 5 3 .15 N N(.05)
609131.6 4875713.2 7712 1.872693E-06 4.56817E-08 1 1 2 2 N 6 225 0.08 1600 5 3 .1 N N(.05)
609131.6 4875713.2 7702 1.868944E-06 2.952761E-07 1 1 2 2 N 6 226 0.02 1500 100 2 .15 N N(.05)
609131.6 4875713.2 7692 2.576849E-06 4.06141E-08 1 2 2 2 N 6 227 0.02 1900 50 3 .15 N N(.05)
609131.6 4875713.2 7682 2.598348E-06 7.262301E-08 1 2 2 2 N 6 228 0.20 2100 50 3 .15 1 N(.05)
609131.6 4875713.2 7672 1.371418E-05 6.169884E-07 1 2 2 2 N 6 229 0.10 1900 10 5 .3 .5 N(.05)
609131.6 4875713.2 7662 5.278876E-06 2.341772E-07 1 2 2 2 N 6 230 0.04 1800 20 3 .2 N N(.05)
609131.6 4875713.2 7652 1.922094E-06 5.17869E-08 1 2 2 2 N 6 231 0.08 2500 30 2 .15 .5 N(.05)
609131.6 4875713.2 7642 5.620655E-06 3.104219E-07 1 2 2 2 N 6 232 0.02 1400 150 3 .15 N N(.05)
609131.6 4875713.2 7632 1.118044E-05 4.489709E-08 1 3 2 2 N 6 233 0.08 1300 15 3 .2 L N(.05)
609131.6 4875713.2 7622 3.735133E-05 2.194389E-06 1 3 2 2 N 6 234 0.10 1200 150 3 .2 N N(.05)
609131.6 4875713.2 7607 1.310283E-06 2.277339E-07 1 3 2 2 N 6 235 0.12 1400 100 3 .1 N N(.05)
609131.6 4875713.2 7602 1.486677E-06 2.965645E-08 1 3 2 2 N 6 236 0.12 1300 50 3 .15 N N(.05)
609131.6 4875713.2 7592 1.616841E-06 6.370206E-08 1 3 2 2 N 6 237 0.06 2000 5 3 .15 N N(.05)
609131.6 4875713.2 7582 2.723037E-06 5.694221E-08 1 3 2 2 N 6 238 0.02 1800 70 3 .15 N N(.05)
609131.6 4875713.2 7572 2.907159E-06 3.015366E-07 1 1 2 2 N 6 239 0.04 1500 50 3 .2 N N(.05)
609131.6 4875713.2 7562 6.09004E-05 2.787752E-07 1 1 2 2 N 6 240 0.04 2100 70 3 .2 .5 N(.05)
609131.6 4875713.2 7552 1.997405E-05 2.285671E-07 1 1 2 2 N 6 241 0.04 1700 70 3 .3 .7 N(.05)
609131.6 4875713.2 7542 4.276365E-05 2.985815E-07 1 1 2 2 N 6 242 0.04 1300 0 3 .3 .5 N(.05)
609131.6 4875713.2 7532 2.871617E-06 9.206796E-08 1 1 2 2 N 6 243 0.04 1700 30 3 .2 1 N(.05)
609131.6 4875713.2 7522 2.057278E-06 6.583881E-08 1 1 2 2 N 6 244 0.04 670 10 3 .15 N N(.05)
609131.6 4875713.2 7512 2.475179E-06 5.370773E-08 1 1 2 2 N 6 245 0.04 1400 100 3 .15 .5 N(.05)
609131.6 4875713.2 7502 2.517651E-06 9.485041E-08 1 1 2 2 N 6 246 0.04 740 15 2 .15 N N(.05)
609131.6 4875713.2 7492 2.919009E-06 9.867625E-08 1 3 2 2 N 6 247 0.12 1300 30 3 .2 .5 N(.05)
609131.6 4875713.2 7482 1.905421E-06 7.660801E-08 1 3 2 2 N 6 248 0.06 1300 50 2 .15 N N(.05)
609131.6 4875713.2 7472 1.814318E-06 9.234047E-08 1 3 2 2 N 6 249 0.04 540 30 2 .2 N N(.05)
609131.6 4875713.2 7462 1.798962E-06 7.651631E-08 1 3 2 2 N 6 250 0.10 1200 30 3 .15 N N(.05)
609131.6 4875713.2 7452 1.888304E-06 1.123945E-07 1 3 2 2 N 6 251 0.14 2000 5 3 .15 L N(.05)
609131.6 4875713.2 7442 1.986708E-06 1.214705E-07 1 3 2 2 N 6 252 0.20 1500 7 3 .15 N N(.05)
609131.6 4875713.2 7432 1.563664E-06 4.140984E-08 1 3 2 2 N 6 253 0.24 1700 5 3 .15 .5 N(.05)
609131.6 4875713.2 7422 1.815761E-06 4.00672E-07 1 3 2 2 N 6 254 0.04 770 150 3 .15 N N(.05)
609131.6 4875713.2 7412 1.920394E-06 4.771438E-08 1 3 2 2 N 6 255 0.22 650 150 5 .15 N N(.05)
609131.6 4875713.2 7402 2.856177E-06 3.249599E-07 1 3 2 2 N 6 256 0.22 880 15 3 .15 N N(.05)

609131.6 4875713.2 7392 1.401013E-06 5.308972E-07 1 3 2 2 N 6 257 0.20 1200 70 3 .15 1.5 N(.05)
609131.6 4875713.2 7382 1.538936E-06 1.193876E-06 1 3 2 2 N 6 258 0.22 1600 100 3 .2 N N(.05)
609131.6 4875713.2 7372 2.433283E-06 1.8193E-07 1 3 2 2 N 6 259 0.22 790 150 2 .2 N N(.05)
609131.6 4875713.2 7362 1.823006E-06 1.259842E-07 1 3 2 2 N 6 260 0.26 550 200 3 .15 N N(.05)
609131.6 4875713.2 7352 1.757088E-06 3.262702E-07 1 3 2 2 N 6 261 0.14 1300 50 3 .2 N N(.05)
609131.6 4875713.2 7342 1.866177E-06 7.25827E-08 1 3 2 2 N 6 262 0.16 790 30 3 .2 N N(.05)
609131.6 4875713.2 7332 3.565549E-06 7.248029E-08 1 3 2 2 N 6 263 0.16 1500 70 5 .15 N N(.05)
609131.6 4875713.2 7322 1.907512E-06 5.198749E-08 1 3 2 2 N 6 264 0.06 1300 30 3 .2 N N(.05)
609131.6 4875713.2 7312 2.701095E-06 1.08912E-07 1 3 2 2 N 6 265 0.06 1800 150 3 .2 N N(.05)
609131.6 4875713.2 7302 2.502728E-06 3.104952E-08 1 3 2 2 N 6 266 0.18 1500 150 3 .15 N N(.05)
609131.6 4875713.2 7292 2.968528E-06 4.029462E-07 1 3 2 2 N 6 267 0.02 1100 150 3 .2 N N(.05)
609131.6 4875713.2 7282 1.810897E-06 2.473899E-07 1 2 2 3 N 6 268 0.24 1300 100 3 .15 N N(.05)
609131.6 4875713.2 7272 2.920587E-06 2.526034E-07 1 2 2 3 N 6 269 0.08 1200 70 3 .2 N N(.05)
609131.6 4875713.2 7262 2.567932E-06 1.818621E-07 1 2 2 3 N 6 270 0.02 1900 0 3 .15 N N(.05)
609131.6 4875713.2 7252 6.297491E-06 1.508168E-07 1 2 2 3 N 6 271 0.06 1600 0 7 .15 N N(.05)
609131.6 4875713.2 7242 1.350615E-04 1.737759E-07 1 2 2 3 N 6 272 0.06 300 0 2 .2 N N(.05)
609131.6 4875713.2 7232 2.079562E-04 5.847638E-07 2 9 9 9 N 6 273 0.06 15 0 2 .2 N N(.05)
609131.6 4875713.2 7222 1.839318E-04 1.054093E-06 2 9 9 9 N 6 274 0.06 10 0 3 .2 N N(.05)
609131.6 4875713.2 7212 1.843342E-04 5.322865E-07 2 9 9 9 N 6 275 0.06 20 0 3 .3 N N(.05)
609131.6 4875713.2 7202 2.967353E-06 2.85322E-07 2 9 9 9 N 6 276 0.24 1400 5 3 .15 N N(.05)
609131.6 4875713.2 7192 1.529947E-06 2.673804E-08 1 2 2 3 N 6 277 0.22 1700 30 3 .2 N N(.05)
609131.6 4875713.2 7182 1.515718E-06 1.460778E-07 1 2 2 3 N 6 278 0.10 860 15 3 .2 N N(.05)
609131.6 4875713.2 7172 1.760674E-06 8.957234E-08 1 2 2 3 N 6 279 0.06 1800 10 2 .15 N N(.05)
609131.6 4875713.2 7162 2.008876E-06 7.245393E-07 1 2 2 3 N 6 280 0.06 2100 70 3 .15 N N(.05)
609131.6 4875713.2 7152 5.860984E-05 1.393876E-07 1 2 2 3 N 6 281 0.02 330 0 2 .2 N N(.05)
609131.6 4875713.2 7142 4.728567E-06 9.358517E-08 2 9 9 9 N 6 282 0.18 550 30 3 .2 N N(.05)
609131.6 4875713.2 7132 1.093931E-04 1.349358E-07 2 9 9 9 N 6 283 0.06 25 10 3 .2 N N(.05)
609131.6 4875713.2 7122 2.157147E-04 5.662442E-07 2 9 9 9 N 6 284 0.08 10 0 2 .2 N N(.05)
609131.6 4875713.2 7112 1.586294E-04 5.187659E-07 2 9 9 9 N 6 285 0.04 10 0 3 .2 N N(.05)
609131.6 4875713.2 7102 1.789672E-05 1.435567E-07 2 9 9 9 N 6 286 0.40 85 15 3 .2 N N(.05)
609131.6 4875713.2 7092 1.427713E-06 9.395733E-08 1 3 2 2 N 6 287 0.22 430 15 3 .15 N L(.05)
609131.6 4875713.2 7082 1.945824E-06 4.291228E-08 1 3 2 2 N 6 288 0.18 350 15 3 .15 N N(.05)
609131.6 4875713.2 7072 1.477248E-06 2.434704E-07 1 3 2 2 N 6 289 0.30 2600 70 3 .2 1 N(.05)
609131.6 4875713.2 7062 1.562221E-06 2.980176E-07 1 3 2 2 N 6 290 0.06 2300 200 2 .15 L N(.05)
609131.6 4875713.2 7052 3.605042E-06 8.10995E-07 1 3 2 2 N 6 291 0.40 210 15 3 .15 N N(.05)
609131.6 4875713.2 7042 2.449762E-06 6.171564E-07 1 3 2 2 N 6 292 0.16 570 300 2 .2 N N(.05)
609131.6 4875713.2 7032 1.375679E-06 2.894879E-07 1 3 2 2 N 6 293 0.12 240 30 3 .15 N N(.05)
609131.6 4875713.2 7022 3.579002E-06 1.551239E-07 1 3 2 2 N 6 294 0.14 580 70 2 .2 N N(.05)
609131.6 4875713.2 7012 2.688539E-06 1.421785E-07 1 3 2 2 N 6 295 0.16 560 70 3 .2 N N(.05)
609131.6 4875713.2 7002 3.261815E-06 2.377309E-07 1 3 2 2 N 6 296 0.14 1300 150 5 .15 1 N(.05)
609131.6 4875713.2 6992 2.227038E-06 8.279413E-08 1 3 2 2 N 6 297 0.20 760 700 3 .15 N L(.05)
609131.6 4875713.2 6982 3.158798E-06 1.12375E-07 1 3 2 2 N 6 298 0.10 2000 30 3 .15 .5 L(.05)

609431.2 4875684.9 8246 2.383884E-06 1.863018E-07 1 2 1 1 N 7 134 0.14 50 15 3 .2 N N(.05)
609431.2 4875684.9 8255 1.918604E-06 3.048632E-07 1 2 1 1 N 7 133 0.08 40 5 2 .2 N N(.05)
609431.2 4875684.9 8236 2.650939E-06 7.229982E-08 1 2 1 1 N 7 135 0.06 65 5 3 .2 N N(.05)
609431.2 4875684.9 8226 3.51146E-06 4.161512E-07 1 2 1 1 N 7 136 0.10 170 0 3 .15 N N(.05)
609431.2 4875684.9 8216 3.236416E-06 7.516356E-08 1 2 1 1 N 7 137 0.02 110 0 3 .15 L N(.05)
609431.2 4875684.9 8206 1.885427E-06 3.634185E-07 1 2 1 1 N 7 138 0.08 140 15 5 .2 N N(.05)
609431.2 4875684.9 8196 3.43892E-07 3.662301E-06 1 2 1 1 N 7 139 0.08 50 15 3 .15 N N(.05)
609431.2 4875684.9 8186 2.012146E-06 1.019782E-07 1 2 1 1 N 7 140 0.10 590 7 3 .2 N N(.05)
609431.2 4875684.9 8176 1.832514E-06 5.231493E-08 1 2 1 1 N 7 141 0.06 180 70 7 .2 N N(.05)
609431.2 4875684.9 8166 3.361411E-06 1.401633E-08 1 2 1 1 N 7 142 0.06 1900 0 7 .2 L N(.05)
609431.2 4875684.9 8156 1.654511E-06 4.83823E-08 1 2 2 1 N 7 143 0.04 1200 0 5 .3 N N(.05)
609431.2 4875684.9 8136 2.557486E-06 1.08049E-07 1 2 2 1 N 7 144 0.04 2200 0 3 .15 L N(.05)
609431.2 4875684.9 8136 1.338835E-06 3.629053E-07 1 2 2 1 N 7 145 0.04 2200 0 3 .2 N N(.05)
609431.2 4875684.9 8126 2.566479E-06 2.005049E-08 1 2 2 1 N 7 146 0.02 470 0 3 .15 N N(.05)
609431.2 4875684.9 8106 6.299436E-06 2.357921E-08 1 2 2 1 N 7 148 0.06 480 5 3 .2 N N(.05)
609431.2 4875684.9 8096 1.818591E-06 2.724062E-07 1 2 2 1 N 7 147 0.08 1000 30 3 .15 N N(.05)
609431.2 4875684.9 8086 3.478184E-06 1.385818E-07 1 2 2 1 N 7 150 0.02 2200 10 10 .3 .7 N(.05)
609431.2 4875684.9 8076 1.928904E-05 2.26983E-07 1 2 2 1 N 7 151 0.02 1300 10 5 .3 .5 N(.05)
609431.2 4875684.9 8066 1.242489E-05 9.700072E-08 1 2 2 1 N 7 152 0.10 1800 5 5 .3 1 N(.05)
609431.2 4875684.9 8056 5.403628E-06 3.640506E-08 1 2 2 1 N 7 153 0.08 650 70 5 .2 .5 N(.05)
609431.2 4875684.9 8046 4.149156E-06 1.050827E-07 1 1 2 3 N 7 154 0.04 1900 70 5 .3 1.5 N(.05)
609431.2 4875684.9 8036 7.389111E-06 1.394934E-07 1 1 2 3 N 7 155 0.12 1900 20 5 .3 .7 N(.05)
609431.2 4875684.9 8026 9.038058E-06 4.91223E-08 1 1 2 3 N 7 156 0.04 1500 0 5 .2 L N(.05)
609431.2 4875684.9 8016 1.540586E-05 4.930595E-07 1 1 2 3 N 7 157 0.08 1500 0 3 .15 L N(.05)
609431.2 4875684.9 8006 1.681494E-05 8.819581E-08 1 1 2 3 N 7 158 0.02 1100 0 3 .3 N N(.05)
609431.2 4875684.9 7996 9.713929E-06 6.85013E-08 1 1 2 3 N 7 159 0.04 1300 70 3 .3 .5 N(.05)
609431.2 4875684.9 7986 5.662223E-06 4.661267E-08 1 1 2 3 N 7 160 0.02 1400 15 5 .3 .5 N(.05)
609431.2 4875684.9 7976 5.164525E-06 3.451552E-08 1 3 2 2 N 7 161 0.02 730 15 5 .3 L N(.05)
609431.2 4875684.9 7966 2.585759E-05 9.961234E-08 1 3 2 2 N 7 162 0.06 540 30 5 .3 N N(.05)
609431.2 4875684.9 7956 3.09662E-05 9.439036E-08 1 3 2 2 N 7 163 0.10 400 5 5 .3 N L(.05)
609431.2 4875684.9 7946 1.861642E-05 2.0805E-07 1 3 2 2 N 7 164 0.35 1900 5 3 .3 .7 L(.05)
609431.2 4875684.9 7936 2.145245E-05 2.762749E-08 1 3 2 2 N 7 165 0.06 700 70 5 .3 .5 N(.05)
609431.2 4875684.9 7926 1.938082E-05 2.169322E-07 1 3 2 2 N 7 166 0.06 1700 50 5 .3 .7 N(.05)
609431.2 4875684.9 7906 8.841212E-06 5.617381E-07 1 3 2 2 N 7 168 0.02 1200 30 3 .3 L N(.05)
609431.2 4875684.9 7896 5.45635E-06 8.272798E-08 1 3 2 2 N 7 169 0.10 1100 10 3 .3 .5 N(.05)
609431.2 4875684.9 7886 1.388381E-05 1.79279E-07 1 3 2 2 N 7 170 0.02 1900 70 3 .3 1 N(.05)
609431.2 4875684.9 7876 2.077055E-05 9.290848E-08 1 3 2 3 N 7 171 0.06 580 20 5 .5 .5 N(.05)
609431.2 4875684.9 7866 2.061378E-05 1.11479E-07 1 3 2 3 N 7 172 0.10 1600 300 5 .3 1 N(.05)
609431.2 4875684.9 7856 1.374431E-05 9.907102E-08 1 3 2 3 N 7 173 0.06 1200 30 5 .5 .5 L(.05)
609431.2 4875684.9 7846 5.520152E-06 1.722695E-07 1 3 2 3 N 7 174 0.02 1200 15 5 .3 N L(.05)
609431.2 4875684.9 7836 1.43494E-05 6.989264E-08 1 3 2 3 N 7 175 0.04 1600 15 3 .3 .5 N(.05)
609431.2 4875684.9 7826 5.309929E-06 1.035989E-07 1 3 2 3 N 7 176 0.02 5200 70 3 .3 2 N(.05)

609431.2 4875684.9 7816 1.37605E-05 1.096907E-07 1 3 2 3 N 7 177 0.10 1100 150 5 .3 L N(.05)
609431.2 4875684.9 7806 2.594467E-05 1.046402E-07 1 3 2 3 N 7 178 0.10 540 30 3 .3 .5 N(.05)
609431.2 4875684.9 7796 8.785132E-05 8.560066E-08 1 3 2 3 N 7 179 0.02 1100 0 5 .5 L N(.05)
609431.2 4875684.9 7786 1.679148E-05 1.513449E-07 1 3 2 3 N 7 180 0.04 390 15 7 .5 .5 N(.05)
609431.2 4875684.9 7776 9.537836E-05 1.753532E-06 1 3 2 3 N 7 181 0.45 420 30 7 .5 L N(.05)
608759.4 4876317.2 6935.32 3.482323E-06 7.09498E-09 1 9 1 2 S 2 1 0.04 5000 200 2 .3 3 .04
608759.8 4876316.0 6931.08 3.815231E-06 2.224426E-08 1 9 1 2 S 2 2 0.15 1500 500 1 .15 1 .06
608760.1 4876315.0 6927.55 3.463284E-06 2.215042E-08 1 9 1 2 S 2 3 0.04 7000 200 3 .3 2 .02
608760.5 4876313.8 6923.66 3.578878E-06 9.786711E-08 1 9 1 2 S 2 4 0.06 5000 70 1.5 .3 1.5 .08
608760.8 4876312.8 6920.12 3.901289E-06 4.154276E-08 1 9 1 2 S 2 5 0.06 3000 70 1.5 .15 1 .06
608761.3 4876311.5 6915.53 2.385176E-06 1.609884E-08 1 9 1 2 S 2 6 0.05 5000 150 2 .3 1.5 .06
608761.8 4876310.0 6910.58 3.377607E-06 1.137218E-07 1 9 1 2 S 2 7 0.04 1500 100 1.5 .3 .7 .04
608762.0 4876309.2 6907.75 2.521927E-06 1.000989E-07 1 9 1 2 S 2 8 0.12 2000 200 1 .2 1 .06
608762.3 4876308.3 6904.57 2.013898E-06 5.640049E-08 1 9 1 2 S 2 9 0.15 2000 150 .7 .2 .7 .06
608762.8 4876306.9 6899.62 2.003202E-06 1.69764E-08 1 9 1 2 S 2 10 0.03 2000 70 .7 .3 .7 .04
608763.3 4876305.4 6894.67 1.601832E-06 8.310842E-09 1 9 1 2 S 2 11 0.15 1500 300 .7 .2 .7 .04
608763.7 4876304.2 6890.54 3.127375E-06 8.361951E-08 1 9 1 2 S 2 12 0.03 2000 300 1 .2 .7 .06
608763.7 4876304.2 6890.54 2.931795E-06 8.16658E-09 1 9 1 2 S 2 13 0.05 1500 500 .7 .2 .7 .04
608764.0 4876303.2 6886.82 4.380583E-06 3.598871E-08 1 9 1 2 S 2 14 0.20 3000 200 1.5 .3 1.5 .06
608764.3 4876302.2 6883.54 1.574412E-05 3.422576E-08 2 9 1 2 S 2 15 0.009 3000 150 2 .3 .7 .06
608764.7 4876301.1 6879.83 6.328835E-05 4.349479E-07 2 9 2 2 S 2 16 0.12 7 0 1.5 .15 N .2
608765.0 4876300.2 6876.64 9.15017E-05 3.697541E-07 2 9 2 2 S 2 17 0.18 150 20 2 .3 N L(.02)
608765.3 4876299.2 6873.29 3.212506E-06 1.765102E-08 1 9 2 2 S 2 18 0.06 5000 100 1 .2 1.5 .1
608765.7 4876298.1 6869.4 3.364639E-06 1.932202E-08 1 9 2 2 S 2 19 0.03 3000 300 2 .2 1.5 .06
608766.2 4876296.5 6863.92 4.350625E-06 5.961419E-08 1 9 2 2 S 2 20 0.03 3000 150 2 .3 2 .06
608766.7 4876294.9 6858.44 2.39611E-06 7.461691E-08 1 9 2 2 S 2 21 0.05 5000 500 7 .5 1 L(.02)
608767.1 4876293.7 6854.2 3.503945E-06 5.30711E-08 1 9 2 2 S 2 22 0.09 7000 1000 5 .3 1.5 .02
608767.8 4876291.5 6846.6 3.824071E-06 1.559547E-07 1 9 2 3 S 2 23 0.20 5000 300 1.5 .2 .7 .06
608768.8 4876288.6 6836.7 2.836292E-06 7.679043E-08 1 9 2 3 S 2 24 0.09 5000 500 1.5 .3 1 .04
608769.5 4876286.6 6829.63 3.808851E-06 1.529702E-08 1 9 2 3 S 2 25 0.03 3000 200 2 .3 1.5 .02
608769.8 4876285.5 6825.92 2.670416E-06 8.377595E-08 1 9 2 3 S 2 26 0.22 5000 500 1.5 .3 3 .1
608770.3 4876284.1 6821.14 3.56182E-06 2.595447E-08 1 9 2 3 S 2 27 0.16 2000 1000 1 .2 3 .06
608770.3 4876284.1 6821.14 2.288027E-06 3.631794E-08 1 9 2 3 S 2 28 0.12 2000 500 1 .2 1 .1
608770.7 4876282.9 6816.73 2.169873E-06 3.167725E-08 1 9 2 3 S 2 29 0.03 3000 200 1 .3 1 .04
608771.2 4876281.2 6810.89 2.319685E-06 4.369275E-08 1 9 2 3 S 2 30 0.10 2000 200 .7 .2 .7 .04
608772.6 4876277.0 6796.58 2.043266E-06 1.745135E-08 1 9 2 3 S 2 31 0.06 3000 500 3 .5 3 .04
608772.9 4876276.0 6793.04 1.807626E-06 4.930505E-08 1 9 2 3 S 2 32 0.13 3000 300 3 .3 1 .02
608773.3 4876275.0 6789.68 1.973257E-06 3.74784E-08 1 9 2 3 S 2 33 0.09 3000 200 3 .2 N L(.02)
608773.3 4876275.0 6789.68 2.230514E-06 1.729131E-08 1 9 2 3 S 2 34 0.15 1500 150 1 .15 .7 .04
608773.8 4876273.4 6784.03 2.640885E-06 3.053037E-08 1 9 2 3 S 2 35 0.10 3000 300 2 .3 1 .04
608774.2 4876272.1 6779.43 4.767056E-06 3.017112E-08 1 9 2 3 S 2 36 0.05 3000 300 3 .3 .7 .04
608774.6 4876271.0 6775.9 2.394161E-06 8.966708E-09 1 9 2 2 S 2 37 0.03 1500 300 1 .2 .7 .04

608775.1	4876269.5	6770.59	2.234672E-06	2.758997E-08	1 9 2 2	S 2 38	0.06	2000	70	1	.3	1	.06
608775.7	4876267.7	6764.23	2.275719E-06	1.515625E-08	1 9 2 3	S 2 39	0.22	2000	200	2	.3	1	.06
608776.3	4876265.7	6757.34	2.280537E-06	3.430557E-08	1 9 2 2	S 2 40	0.05	2000	100	.7	.15	1	.04
608776.3	4876265.7	6757.34	1.791463E-06	1.421801E-07	1 9 2 2	S 2 41	0.10	2000	100	.7	.2	3	.06
608777.0	4876263.7	6750.62	2.744992E-06	6.450525E-10	1 9 2 2	S 2 42	0.24	700	50	2	.5	2	.04
608777.6	4876261.8	6744.08	2.100092E-06	9.137224E-08	1 9 2 2	S 2 43	0.05	2000	200	.7	.2	2	.04
608777.3	4876262.6	6746.87	1.772091E-06	8.860457E-08	1 9 2 2	S 2 44	0.05	3000	2999	.7	.2	1	.04
608778.2	4876259.9	6737.36	2.307555E-06	3.079611E-08	1 9 2 2	S 2 45	0.03	2000	70	.7	.15	2	.04
609349.4	4874520.6	730.65	2.647474E-06	5.755908E-08	1 9 2 2	S 2 46	0.03	2000	300	1	.2	1	.04
608778.9	4876257.9	6730.65	4.332691E-06	1.060687E-07	1 9 2 2	S 2 47	0.13	1500	150	.7	.2	.5	L(.02)
608779.5	4876256.1	6724.29	1.976091E-06	1.618366E-08	1 9 2 2	S 2 48	0.03	1500	100	.5	.15	.7	.02
608779.5	4876256.1	6724.29	2.948884E-06	9.276717E-08	1 9 2 2	S 2 49	0.18	700	150	.5	.15	.5	.06
608780.1	4876254.1	6717.57	2.357056E-06	6.923813E-08	1 9 2 2	S 2 50	0.10	1500	200	.7	.2	.7	.02
608780.8	4876252.2	6710.68	3.016978E-06	1.014087E-07	1 9 2 2	S 2 51	0.009	1500	200	1.5	.5	1.5	.04
608781.4	4876250.2	6703.78	2.839758E-06	4.067638E-08	1 9 2 2	S 2 52	0.09	1500	200	.7	.2	.7	.02
608782.1	4876248.2	6697.07	3.38828E-06	2.508565E-08	1 9 2 2	S 2 53	0.10	1500	30	5	.3	.5	L(.02)
608783.3	4876244.4	6683.99	2.66708E-06	3.178441E-08	1 9 2 2	S 2 55	0.03	1500	150	.7	.2	.5	.04
608783.9	4876242.6	6677.62	1.714035E-06	2.311056E-07	1 9 2 2	S 2 56	0.009	700	200	.5	.15	.7	.04
608784.5	4876240.6	6670.91	2.358049E-06	6.899588E-08	1 9 2 2	S 2 57	0.26	3000	200	5	.3	L	.02
608785.2	4876238.7	6664.19	3.31092E-06	7.741448E-08	1 9 2 2	S 2 58	0.20	7000	150	1.5	.3	2	.06
608785.8	4876236.8	6657.83	1.987111E-06	1.736307E-07	2 9 2 2	S 2 59	0.40	1500	200	.7	.2	3	.06
608786.4	4876234.9	6651.11	3.641927E-06	4.283652E-08	2 9 2 2	S 2 60	0.04	2000	300	1	.3	2	L(.02)
608787.1	4876233.0	6644.39	2.90294E-06	1.790101E-08	2 9 2 3	S 2 61	0.03	2000	200	1	.2	1.5	.02
608787.7	4876231.1	6638.03	3.020745E-06	2.883917E-08	2 9 2 2	S 2 62	0.06	2000	200	.7	.15	.5	.04
608787.7	4876231.1	6638.03	2.987877E-06	3.405183E-08	2 9 2 2	S 2 63	0.04	3000	300	7	.2	2	.04
608788.2	4876229.4	6632.02	3.831155E-06	1.108149E-07	2 9 2 2	S 2 64	0.03	2000	300	.7	.15	.7	.04
608788.6	4876228.4	6628.66	1.768304E-06	5.854501E-08	2 9 2 2	S 2 65	0.03	1500	250	1.5	.2	.7	.06
608788.9	4876227.3	6624.95	4.376621E-06	2.013603E-07	2 9 2 2	S 2 66	0.13	1000	100	1	.3	.7	.04
608789.5	4876225.4	6618.41	5.012347E-06	2.177889E-08	1 9 2 2	S 2 67	0.03	1000	200	.5	.1	L	.06
608790.2	4876223.5	6611.87	2.849036E-06	3.124308E-08	1 9 2 2	S 2 68	0.03	2000	100	.7	.3	1	.04
608790.8	4876221.6	6605.16	2.716265E-06	2.641082E-08	1 9 2 3	S 2 69	0.05	3000	200	2	.3	1	.02
608791.5	4876219.6	6598.09	2.267002E-06	7.17953E-10	1 9 2 3	S 2 70	0.10	700	150	.5	.1	1.5	.04
608791.9	4876218.3	6593.84	1.256824E-06	7.114007E-08	1 9 2 3	S 2 71	0.03	1500	200	.7	.15	.5	.02
608643.3	4875922.9	7233.5	1.402846E-04	3.105246E-06	1 9 1 1	S 3 72	0.009	300	10	5	.3	L	.02
608643.3	4875922.9	7227.5	6.642169E-06	1.091127E-07	1 9 1 1	S 3 73	0.16	150	0	3	.3	.5	L(.02)
608643.3	4875922.9	7220.5	4.174033E-06	2.095078E-06	1 9 1 1	S 3 74	0.03	70	0	3	.2	.5	L(.02)
608643.3	4875922.9	7211	3.174531E-06	0	1 9 2 1	S 3 75	0.05	1000	0	3	.2	N	L(.02)
608643.3	4875922.9	7199.5	1.689961E-06	1.256059E-06	1 9 2 1	S 3 76	0.13	1000	15	7	.3	L	L(.02)
608643.3	4875922.9	7199.5	3.418445E-06	4.141726E-08	1 9 2 1	S 3 76	0.13	1000	15	7	.3	L	L(.02)
608643.3	4875922.9	7199.5	2.873302E-06	7.112203E-08	1 9 2 1	S 3 77	0.05	1000	0	2	.15	L	.02
608643.3	4875922.9	7189	4.24042E-06	3.854911E-07	1 9 2 1	S 3 78	0.10	500	7	7	.5	N	L(.02)
608643.3	4875922.9	7182.5	3.215092E-06	1.607555E-08	1 9 2 1	S 3 79	0.03	1500	10	10	.7	.5	.02

608643.3 4875922.9 7177.5 3.166575E-06 2.69466E-08 1 9 2 1 S 3 80 0.06 500 50 3 .2 N .02
608643.3 4875922.9 7168 3.159088E-06 9.025621E-08 1 9 2 1 S 3 81 0.03 700 7 2 .15 L L(.02)
608643.3 4875922.9 7159.25 3.53564E-06 4.132457E-08 1 9 2 3 S 3 82 0.13 1000 7 3 .3 2 .06
608643.3 4875922.9 7154.25 1.959528E-06 7.785752E-08 1 9 2 3 S 3 83 0.05 1000 20 5 .3 L .02
608643.3 4875922.9 7141.5 1.977698E-06 2.639146E-08 2 9 2 3 S 3 84 0.09 300 15 1 .3 10 .04
608643.3 4875922.9 7120 3.272247E-06 5.316918E-08 2 9 2 2 S 3 85 0.06 700 10 1 .3 1.5 .04
608643.3 4875922.9 7106 5.198398E-06 8.35542E-08 2 9 2 2 S 3 86 0.09 1500 15 2 .3 1 .04
608643.3 4875922.9 7092.5 3.35578E-06 1.511648E-08 2 9 2 2 S 3 87 0.05 1500 50 3 .3 .5 L(.02)
608643.3 4875922.9 7080.5 3.062946E-06 7.23588E-09 2 9 2 2 S 3 88 0.12 1500 15 3 .2 .5 .04
608643.3 4875922.9 7070 3.627654E-06 7.181326E-08 2 9 2 2 S 3 89 0.03 1000 0 2 .2 .5 .02
608643.3 4875922.9 7070 5.423116E-07 4.101078E-06 2 9 2 2 S 3 89 0.03 1000 0 2 .2 .5 .02
608643.3 4875922.9 7063 2.362023E-06 1.033413E-07 2 9 2 2 S 3 90 0.06 300 20 3 .15 .5 .02
608643.3 4875922.9 7058 5.540206E-06 6.474535E-08 2 9 2 2 S 3 91 0.10 1500 10 1.5 .2 1 L(.02)
608643.3 4875922.9 7052 9.743894E-06 8.77369E-08 1 9 2 2 S 3 92 0.03 2000 5 7 .7 .7 .04
608643.3 4875922.9 7052 1.676127E-05 2.032617E-07 1 9 2 2 S 3 93 0.22 1500 7 7 .5 .5 L(.02)
608643.3 4875922.9 7042.75 3.222422E-06 8.559754E-10 1 9 2 2 S 3 94 0.10 700 5 3 .3 .5 .02
608643.3 4875922.9 7036.5 4.572165E-06 5.017854E-08 1 9 2 2 S 3 95 0.04 700 15 3 .2 L .02
608643.3 4875922.9 7028.25 3.230725E-06 1.718536E-08 1 9 2 2 S 3 96 0.05 300 5 3 .15 L L(.02)
608643.3 4875922.9 7020 3.262029E-06 8.612198E-10 1 9 2 2 S 3 97 0.10 1000 50 3 .3 .5 .02
608643.3 4875922.9 7015.5 4.07372E-06 5.388834E-08 1 9 2 2 S 3 98 0.10 2000 30 3 .3 .7 L(.02)
608643.3 4875922.9 7007 3.039527E-06 3.505492E-08 1 9 2 2 S 3 99 0.03 700 15 5 .3 L .04
608643.3 4875922.9 6996 5.239344E-06 7.852029E-09 1 9 2 2 S 3 100 0.08 500 15 2 .2 L L(.02)
608643.3 4875922.9 6990 2.270656E-06 1.59078E-08 1 9 2 2 S 3 101 0.09 300 0 3 .3 N .02
608643.3 4875922.9 6987 3.53421E-06 1.293737E-07 1 9 2 2 S 3 102 0.13 700 10 3 .3 L L(.02)
608643.3 4875922.9 6980.5 6.56688E-06 6.555202E-08 1 9 2 2 S 3 103 0.03 150 10 2 .1 N L(.02)
608643.3 4875922.9 6980.5 4.169684E-06 1.090751E-07 1 9 2 2 S 3 104 0.09 300 10 3 .2 L L(.02)
608643.3 4875922.9 6971.25 3.323508E-06 2.685833E-08 1 9 2 2 S 3 105 0.10 500 10 7 .3 .5 L(.02)
608643.3 4875922.9 6961.75 4.166471E-06 3.264937E-08 1 9 2 3 S 3 106 0.009 300 5 5 .3 L L(.02)
608643.3 4875922.9 6952.5 4.706381E-06 4.571665E-08 1 9 2 3 S 3 107 0.05 700 20 3 .3 L .02
608643.3 4875922.9 6943.5 2.703666E-06 9.952169E-08 1 9 2 3 S 3 108 0.009 300 5 3 .2 .5 .04
608643.3 4875922.9 6934 4.021902E-06 4.07123E-08 1 9 2 2 S 3 109 0.03 500 5 3 .15 L .04
608643.3 4875922.9 6934 5.075604E-06 2.483394E-08 1 9 2 2 S 3 110 0.09 150 0 15 .05 N .04
608643.3 4875922.9 6924.5 4.028237E-06 2.936386E-08 1 9 2 2 S 3 111 0.06 500 20 3 .15 .5 .02
608643.3 4875922.9 6915.25 3.157048E-06 2.014623E-08 1 9 2 2 S 3 112 0.05 500 73 .2 L .02
608643.3 4875922.9 6906 4.175014E-06 6.68968E-08 1 9 2 2 S 3 113 0.03 700 0 3 .2 L .02
608643.3 4875922.9 6896.75 6.779516E-06 3.733146E-08 1 9 2 2 S 3 114 0.24 1000 0 .5 .1 5 L(.02)
608643.3 4875922.9 6887 4.479785E-06 3.186698E-08 1 9 2 2 S 3 115 0.05 500 0 3 .2 .7 .02
608643.3 4875922.9 6877.5 3.994032E-06 5.580614E-08 1 9 2 2 S 3 116 0.04 300 5 3 .15 .5 .02
608643.3 4875922.9 6877.5 3.390996E-06 5.243828E-08 1 9 2 2 S 3 117 0.06 300 0 3 .1 .5 .02
608643.3 4875922.9 6868.25 6.657856E-06 1.955766E-07 1 9 2 2 S 3 118 0.09 300 70 3 .5 L L(.02)
608643.3 4875922.9 6858.75 5.211211E-06 2.469824E-08 1 9 2 2 S 3 119 0.06 1000 10 5 .3 .5 L(.02)
608643.3 4875922.9 6849 4.809486E-06 4.531129E-08 1 9 2 2 S 3 120 0.03 300 15 2 .15 L L(.02)

608643.3 4875922.9 6849 3.827673E-06 7.384905E-08 1 9 2 2 S 3 121 0.09 200 7 7 .3 N L(.02)
608643.3 4875922.9 6839.5 5.624297E-06 2.833615E-08 1 9 2 3 S 3 122 0.06 700 30 5 .3 .5 .04
608643.3 4875922.9 6833 2.797726E-06 1.103052E-07 1 9 2 3 S 3 123 0.20 700 5 3 .3 7 .04
608643.3 4875922.9 6828 3.012634E-06 4.369243E-08 1 9 2 3 S 3 124 0.09 700 5 2 .15 L .02
608643.3 4875922.9 6820.5 2.748828E-06 5.911337E-08 1 9 2 3 S 3 125 0.009 300 0 3 .2 N .02
608643.3 4875922.9 6812.25 4.048813E-06 3.78898E-08 1 9 2 3 S 3 126 0.09 1000 15 2 .2 1 .02
608643.3 4875922.9 6802.75 5.102369E-06 1.498854E-08 1 9 2 3 S 3 127 0.05 700 30 .7 .2 1.5 .04
608643.3 4875922.9 6792.5 3.76463E-06 1.093213E-06 1 9 2 3 S 3 128 0.09 700 20 3 .2 .5 .04
608643.3 4875922.9 6792.5 4.524685E-06 4.188783E-08 1 9 2 3 S 3 128 0.09 700 20 3 .2 .5 .04
608643.3 4875922.9 6786 3.543796E-06 5.857331E-08 1 9 2 2 S 3 129 0.03 500 7 3 .2 L .02
608643.3 4875922.9 6781 2.599096E-06 1.62264E-08 1 9 2 2 S 3 130 0.009 700 50 3 .2 .5 L(.02)
608643.3 4875922.9 6773.5 4.190059E-06 2.529214E-08 1 9 2 2 S 3 131 0.03 1000 5 3 .3 .7 L(.02)
608643.3 4875922.9 6764 4.635965E-06 6.35091E-08 1 9 2 2 S 3 132 0.24 1000 20 1.5 .3 10 .1
608643.3 4875922.9 6764 3.663735E-06 5.018774E-08 1 9 2 2 S 3 133 0.06 1000 30 5 .3 .5 L(.02)
608643.3 4875922.9 6754 5.522663E-06 8.726781E-09 1 9 2 2 S 3 134 0.10 1500 30 3 .15 .5 .04
608643.3 4875922.9 6744.5 3.978814E-06 5.652164E-08 1 9 2 2 S 3 135 0.10 1500 150 1 .3 1 .02
608643.3 4875922.9 6735.5 4.684251E-06 3.019086E-08 1 9 2 2 S 3 136 0.12 1000 100 3 .2 2 .04
608643.3 4875922.9 6735.5 4.053562E-06 4.907452E-08 1 9 2 2 S 3 137 0.03 1000 15 5 .3 L L(.02)
608884.3 4875920.7 7379 4.425198E-06 8.441113E-09 1 9 1 2 S 4 138 0.06 200 300 1.5 .3 .7 .04
608884.3 4875920.7 7364 1.554605E-06 7.777491E-08 1 9 1 2 S 4 139 0.06 200 300 2 .3 1.5 .02
608884.3 4875920.7 7356.5 2.382199E-06 1.245394E-08 1 9 1 2 S 4 140 0.09 150 100 1.5 .3 1.5 .04
608884.3 4875920.7 7356.5 2.196927E-06 5.649254E-08 1 9 1 2 S 4 141 0.09 300 150 5 .3 .7 L(.02)
608884.3 4875920.7 7347 4.209445E-06 1.423673E-06 1 9 1 2 S 4 142 0.03 150 100 1 .2 1 .02
608884.3 4875920.7 7338 2.391363E-06 3.421106E-08 1 9 1 2 S 4 143 0.06 200 100 1.5 .15 .7 .04
608884.3 4875920.7 7330 1.407412E-06 1.052979E-07 1 9 1 2 S 4 144 0.06 200 100 .7 .1 1 .06
608884.3 4875920.7 7322 3.625482E-06 2.753889E-08 1 9 1 2 S 4 145 0.18 500 200 1 .2 1 .04
608884.3 4875920.7 7314 3.670378E-06 7.599738E-09 1 9 1 2 S 4 146 0.03 200 150 1.5 .15 .7 .06
608884.3 4875920.7 7307.5 3.181334E-06 2.333513E-08 1 9 1 2 S 4 147 0.009 700 500 3 .3 1.5 .02
608884.3 4875920.7 7303 1.910697E-06 7.835248E-09 2 9 1 2 S 4 148 0.03 2000 500 2 .3 1.5 .04
608884.3 4875920.7 7298.5 2.434381E-06 1.495344E-08 1 9 1 2 S 4 149 0.03 1500 500 3 .15 1 .06
608884.3 4875920.7 7292.5 1.831829E-06 2.158507E-08 1 9 1 2 S 4 150 0.05 5000 200 1 .2 1 .02
608884.3 4875920.7 7286.75 1.827695E-06 3.73027E-08 1 9 1 2 S 4 151 0.06 2000 150 1 .15 .7 .04
608884.3 4875920.7 7282.75 1.400616E-06 5.187269E-08 1 9 3 2 S 4 152 0.05 5000 300 2 .3 1 .02
608884.3 4875920.7 7279.25 2.146365E-06 7.534806E-09 1 9 3 2 S 4 153 0.04 7000 300 3 .15 L .02
608884.3 4875920.7 7275.5 2.304236E-06 1.826529E-07 1 9 3 2 S 4 154 0.009 5000 500 2 .3 .7 .02
608884.3 4875920.7 7275.5 4.62255E-06 1.714154E-06 1 9 3 2 S 4 154 0.009 5000 500 2 .3 .7 .02
608884.3 4875920.7 7269.75 1.086811E-06 4.644663E-08 1 9 3 2 S 4 155 0.06 10000 200 3 .3 .7 .02
608884.3 4875920.7 7269.75 3.46978E-06 5.094072E-08 1 9 3 2 S 4 156 0.40 10000 300 2 .3 1 .04
608884.3 4875920.7 7265 1.149135E-06 2.621203E-08 1 9 3 2 S 4 157 0.10 5000 100 .5 .2 .7 .04
608884.3 4875920.7 7261 2.727703E-06 2.052536E-08 1 9 3 2 S 4 158 0.04 3000 500 1 .3 1 .04
608884.3 4875920.7 7255.5 1.104137E-06 1.672566E-08 1 9 3 2 S 4 159 0.06 5000 200 1 .2 .7 .04
608884.3 4875920.7 7248 2.046211E-06 1.261386E-07 1 9 3 2 S 4 160 0.03 3000 300 1.5 .2 1 .04

608884.3 4875920.7 7238.5 3.090254E-06 4.642183E-08 1 9 3 2 S 4 161 0.09 5000 150 2 .3 1.5 .04
608884.3 4875920.7 7229.75 3.15485E-06 7.089511E-09 1 9 3 2 S 4 162 0.09 5000 500 2 .3 1 .02
608884.3 4875920.7 7217.75 4.656885E-06 7.974516E-08 1 9 3 2 S 4 163 0.16 7000 150 1.5 .3 5 .04
608884.3 4875920.7 7206.5 2.249638E-06 2.892837E-08 1 9 3 2 S 4 164 0.04 3000 300 1 .2 .7 .04
608884.3 4875920.7 7198.5 2.847134E-06 2.612E-08 1 9 3 2 S 4 165 0.05 7000 500 3 .3 5 .06
608884.3 4875920.7 7198.5 4.267107E-06 3.20276E-08 1 9 3 2 S 4 166 0.04 5000 500 1.5 .3 2 .06
608884.3 4875920.7 7189 2.477173E-06 5.055495E-08 1 9 3 2 S 4 167 0.05 3000 300 1 .15 1.5 .06
608884.3 4875920.7 7179.5 4.266188E-06 6.453644E-08 1 9 3 2 S 4 168 0.03 5000 300 1.5 .3 1 .06
608884.3 4875920.7 7173.5 3.671354E-06 5.226568E-08 1 9 3 2 S 4 169 0.06 7000 300 1.5 .3 5 .02
608884.3 4875920.7 7169.5 2.966176E-06 1.332417E-08 1 9 3 2 S 4 170 0.26 3000 500 2 .2 .5 .02
608884.3 4875920.7 7163 2.311109E-06 3.289689E-08 1 9 3 2 S 4 171 0.13 10000 100 3 .3 1 L(.02)
608884.3 4875920.7 7155.25 2.481359E-06 7.73025E-09 1 9 3 2 S 4 172 0.03 2000 70 1 .15 1 .04
608884.3 4875920.7 7146.5 2.121858E-06 1.619719E-08 1 9 3 2 S 4 173 0.03 7000 100 1.5 .3 1 .04
608884.3 4875920.7 7139.75 2.408138E-06 9.327276E-09 1 9 3 2 S 4 174 0.20 2000 100 1.5 .15 1.5 .04
608884.3 4875920.7 7135.75 4.066527E-06 2.397352E-08 1 9 3 2 S 4 175 0.05 3000 200 1 .2 2 .02
608884.3 4875920.7 7135.75 2.414368E-06 3.308173E-08 1 9 3 2 S 4 176 0.06 3000 200 2 .2 1 .02
608884.3 4875920.7 7123.75 5.079734E-06 1.332184E-07 1 9 3 2 S 4 177 0.18 7000 200 .7 .2 .5 .04
608884.3 4875920.7 7108 1.699095E-05 1.330416E-07 1 9 3 2 S 4 178 0.04 10000 150 2 .2 3 .08
608884.3 4875920.7 7098 2.914388E-06 2.082641E-08 1 9 3 2 S 4 179 0.10 5000 150 1 .3 .7 .06
608884.3 4875920.7 7089.5 3.021421E-06 7.222036E-08 1 9 3 2 S 4 180 0.06 3000 150 1.5 .2 1 .04
608884.3 4875920.7 7080.25 2.696501E-06 8.638862E-08 1 9 3 2 S 4 181 0.09 3000 1000 1 .3 1 .02
608884.3 4875920.7 7070.25 2.337211E-06 1.335525E-08 1 9 2 2 S 4 182 0.06 2000 700 .7 .2 1 .02
608884.3 4875920.7 7058.5 2.308622E-06 3.345849E-08 1 9 2 2 S 4 183 0.03 1500 150 .5 .2 .7 .04
608884.3 4875920.7 7044 2.617929E-06 7.881657E-08 1 9 2 2 S 4 184 0.10 3000 1000 1 .3 2 .04
608884.3 4875920.7 7034 1.86418E-06 5.198439E-08 1 9 2 2 S 4 185 0.15 2000 700 2 .2 1.5 L(.02)
608884.3 4875920.7 7029.5 2.27596E-06 3.324117E-08 1 9 2 2 S 4 186 0.09 1500 700 1 .3 .7 .04
608884.3 4875920.7 7021 1.995399E-06 3.170702E-08 1 9 2 2 S 4 187 0.40 2000 150 1.5 .3 3 .02
608884.3 4875920.7 7021 4.15613E-06 3.31674E-08 1 9 2 2 S 4 188 0.15 3000 200 .7 .3 1 .04
608884.3 4875920.7 7009.75 2.709892E-06 3.737819E-08 1 9 2 2 S 4 189 0.10 2000 200 1.5 .2 .7 .04
608884.3 4875920.7 6995.25 4.093017E-06 4.724681E-08 1 9 2 2 S 4 190 0.10 3000 100 2 .2 1 .02
608884.3 4875920.7 6976.25 4.825792E-06 5.461121E-08 1 9 2 2 S 4 191 0.06 1500 300 1.5 .3 1.5 .02
608884.3 4875920.7 6964.75 1.216649E-06 2.442414E-08 3 9 2 3 S 4 192 0.05 150 200 .5 .3 L .04
608884.3 4875920.7 6960 2.153803E-06 2.420006E-08 3 9 2 3 S 4 193 0.03 100 200 .5 .2 N L(.02)
608884.3 4875920.7 6951.5 2.642671E-06 7.015258E-09 3 9 2 3 S 4 194 0.03 500 200 .7 .3 .5 .02
608884.3 4875920.7 6942.25 4.64258E-05 3.768328E-07 3 9 2 3 S 4 195 0.05 1000 100 2 .3 .5 .04
608884.3 4875920.7 6935.25 6.865335E-06 1.23237E-08 3 9 2 3 S 4 196 0.13 1500 200 1 .3 1 .04
608884.3 4875920.7 6928 7.123961E-06 3.45197E-08 3 9 2 3 S 4 197 0.26 1500 100 1.5 .3 .7 .04
608884.3 4875920.7 6928 8.512288E-06 3.318655E-08 3 9 2 3 S 4 198 0.05 1000 300 2 .3 .7 .02
608884.3 4875920.7 6920 4.663239E-06 7.259298E-08 3 9 2 3 S 4 199 0.04 700 70 1 .2 .7 .04
608884.3 4875920.7 6910 4.577076E-06 1.493078E-08 3 9 2 3 S 4 200 0.03 2000 200 2 .3 1 L(.02)
609074.7 4876313.7 7052 1.00352E-05 1.618628E-08 1 9 1 3 S 5 201 0.009 1500 100 1.5 .3 .7 .02
609074.7 4876313.7 7026.4 4.309038E-06 3.633249E-08 1 9 1 3 S 5 203 0.09 1500 200 1.5 .2 1.5 L(.02)

609074.7 4876313.7 7011.4 5.006339E-06 1.559912E-07 1 9 2 3 S 5 204 0.15 2000 70 1 .3 1.5 .08
609074.7 4876313.7 6999.4 3.281215E-06 7.798897E-08 1 9 2 3 S 5 205 0.09 1500 70 10 .5 1.5 .04
6987.7 4.201791E-06 6.272694E-08 1 9 2 3 S 5 206 0.03 1500 70 1 .2 .7 .06
609074.7 4876313.7 6977 3.83975E-06 2.854133E-08 1 9 2 3 S 5 207 0.03 1500 150 1 .2 .5 .04
609074.7 4876313.7 6977 4.20187E-06 4.379148E-08 1 9 2 3 S 5 208 0.03 1500 300 1.5 .2 .7 .04
609074.7 4876313.7 6967 6.291383E-06 2.740645E-08 1 9 2 3 S 5 209 0.24 1500 200 2 .2 L .02
609074.7 4876313.7 6957 4.374698E-06 7.414792E-08 1 9 2 3 S 5 210 0.05 1500 200 2 .2 1 .02
609074.7 4876313.7 6947.5 2.777891E-06 6.173104E-08 1 9 2 3 S 5 211 0.009 2000 200 1.5 .3 2 .02
609074.7 4876313.7 6938.5 5.179836E-05 4.211179E-07 1 9 2 3 S 5 212 0.09 5000 150 3 .3 3 .04
609074.7 4876313.7 6929.5 4.186466E-06 1.379777E-09 1 9 2 3 S 5 213 0.009 1500 200 .7 .2 1 .04
609074.7 4876313.7 6920 7.325371E-06 4.079209E-08 1 9 2 3 S 5 214 0.04 1500 200 .7 .2 .7 .06
609074.7 4876313.7 6910.2 1.329648E-05 3.522307E-08 1 9 2 3 S 5 215 0.05 1500 150 3 .3 .7 .02
609074.7 4876313.7 6897.2 4.947093E-06 4.440835E-08 1 9 2 3 S 5 216 0.05 700 150 .7 .1 1 .06
609074.7 4876313.7 6884 4.816823E-06 3.10696E-08 1 9 2 3 S 5 217 0.06 1500 100 1 .2 1 .06
609074.7 4876313.7 6874.5 3.945974E-06 1.695586E-08 1 9 2 3 S 5 218 0.04 1500 50 .7 .2 1 .02
609074.7 4876313.7 6865 6.103677E-06 3.325914E-08 1 9 2 3 S 5 219 0.18 1500 150 1.5 .3 .7 .04
609074.7 4876313.7 6865 4.133544E-06 6.937773E-08 1 9 2 3 S 5 220 0.04 1500 100 15 .3 .5 L(.02)
609074.7 4876313.7 6855.5 6.972989E-06 7.535971E-08 1 9 2 3 S 5 221 0.03 1000 100 1 .15 .7 .06
609074.7 4876313.7 6846 3.381822E-06 5.961152E-08 1 9 2 3 S 5 222 0.04 1500 700 2 .3 .7 .04
609074.7 4876313.7 6836.5 3.799236E-06 2.234824E-07 1 9 2 3 S 5 223 0.05 2000 200 1.5 .3 1 .06
609074.7 4876313.7 6827.5 4.96587E-06 2.4038E-08 1 9 2 3 S 5 224 0.04 3000 500 7 .2 .5 .04
609074.7 4876313.7 6818 6.456761E-06 1.209132E-07 1 9 2 3 S 5 225 0.09 2000 200 2 .2 3 .06
609074.7 4876313.7 6808.2 3.576429E-05 2.225787E-07 1 9 2 3 S 5 226 0.05 1500 200 5 .3 .7 L(.02)
609074.7 4876313.7 6798.7 2.00844E-05 2.65629E-07 1 9 2 3 S 5 227 0.13 1000 300 1 .2 .5 .08
609074.7 4876313.7 6789.2 4.636832E-06 6.677102E-08 1 9 2 3 S 5 228 0.05 1000 70 1 .2 .7 .04
609074.7 4876313.7 6779.7 9.703414E-06 6.137658E-07 1 9 2 3 S 5 229 0.03 1500 150 1 .2 .7 .02
609074.7 4876313.7 6770.2 1.47162E-05 5.542449E-08 1 9 2 3 S 5 230 0.10 1500 300 1 .3 .7 .06
609074.7 4876313.7 6770.2 1.868613E-05 2.580499E-07 1 9 2 3 S 5 231 0.13 3000 700 1.5 .3 1 .06
609074.7 4876313.7 6760.7 9.000616E-06 3.581817E-08 1 9 2 3 S 5 232 0.03 2000 50 .7 .2 .7 .04
609074.7 4876313.7 6751.5 7.320327E-05 4.29493E-07 1 9 2 3 S 5 233 0.04 1000 70 1.5 .3 1 .06
609074.7 4876313.7 6742.2 4.057629E-06 2.400975E-08 1 9 2 3 S 5 234 0.04 700 50 .7 .15 .5 .04
609074.7 4876313.7 6732.7 4.499864E-06 9.144965E-08 1 9 2 3 S 5 235 0.20 2000 100 1 .2 2 .06
609074.7 4876313.7 6723.2 3.961612E-06 1.468312E-07 1 9 2 1 S 5 236 0.03 1500 70 .7 .15 1 .2
609074.7 4876313.7 6713.7 9.391255E-06 1.532298E-08 1 9 2 3 S 5 237 0.30 500 50 .7 .1 .5 .04
609074.7 4876313.7 6704 5.19363E-06 7.519238E-07 1 9 2 3 S 5 238 0.15 1500 100 1.5 .3 .7 .06
609074.7 4876313.7 6719.2 9.488297E-06 6.476694E-08 1 9 2 3 S 5 239 0.05 1000 70 .7 .2 L .02
609074.7 4876313.7 6684.7 4.944181E-06 2.115516E-07 4 9 2 1 S 5 240 0.03 1500 150 1.5 .2 .7 .04
609074.7 4876313.7 6675.2 1.368298E-05 1.34302E-07 4 9 2 1 S 5 241 0.06 1500 200 2 .3 2 .04
609074.7 4876313.7 6675.2 1.125255E-05 1.404378E-07 4 9 2 1 S 5 242 0.03 1000 100 1.5 .2 .7 L(.02)
609074.7 4876313.7 6665.7 8.078203E-05 1.887891E-06 4 9 2 1 S 5 243 0.22 7000 300 1 .2 2 .02
609074.7 4876313.7 6656.5 1.033979E-05 1.418266E-08 4 9 2 1 S 5 244 0.05 1000 100 1 .2 .5 .04
609074.7 4876313.7 6647 1.066422E-05 3.773322E-08 4 9 2 1 S 5 245 0.05 500 30 1 .2 .5 .02

609074.7 4876313.7 6637.2 1.6386E-05 2.373662E-07 4 9 2 1 S 5 246 0.06 700 100 1.5 .3 .7 .04
609074.7 4876313.7 6627.7 8.825458E-06 9.645373E-08 4 9 2 1 S 5 247 0.009 1000 200 1.5 .2 .5 L(.02)
609074.7 4876313.7 6627.7 7.357431E-06 5.748007E-08 4 9 2 1 S 5 248 0.03 1000 300 1.5 .3 .5 L(.02)
609074.7 4876313.7 6618.2 1.632977E-05 1.062751E-07 4 9 2 1 S 5 249 0.03 700 200 1 .3 .5 .04
609074.7 4876313.7 6608.7 4.289341E-06 5.392361E-08 4 9 2 1 S 5 250 0.18 300 300 .5 .15 N .04
609074.7 4876313.7 6599 4.213873E-06 1.384286E-09 4 9 2 1 S 5 251 0.10 200 200 .7 .15 .5 .04
609074.7 4876313.7 6589 9.099018E-06 1.224431E-07 4 9 2 1 S 5 252 0.09 1500 300 1 .2 .7 .04
609074.7 4876313.7 6589 3.827727E-06 5.484129E-08 4 9 2 1 S 5 253 0.08 1500 100 1 .2 .5 .02
609074.7 4876313.7 6583 3.371867E-06 1.419543E-08 4 9 2 1 S 5 254 0.05 700 150 10 .2 1 .02
609428.3 4876540.0 7004.2 3.751164E-06 8.224395E-09 3 9 1 1 S 6 255 0.12 1000 70 2 .15 .7 .02
609428.3 4876540.0 6995.9 3.12268E-06 8.664212E-08 3 9 1 1 S 6 256 0.05 1500 70 3 .3 .7 .04
609428.3 4876540.0 6988.4 6.396368E-05 3.019934E-07 3 9 1 1 S 6 257 0.009 2000 30 3 .3 .7 .04
609428.3 4876540.0 6979.7 5.223223E-06 3.713372E-08 3 9 1 1 S 6 258 0.15 1000 20 2 .3 .7 .04
609428.3 4876540.0 6979.7 6.972076E-06 7.506284E-08 3 9 1 1 S 6 259 0.26 1500 30 5 .3 .7 L(.02)
609428.3 4876540.0 6970 4.654336E-06 7.634812E-09 3 9 1 1 S 6 260 0.06 700 200 3 .2 .5 .04
609428.3 4876540.0 6960.5 2.612092E-06 7.978261E-09 3 9 1 1 S 6 261 0.10 1500 30 3 .2 .5 .04
609428.3 4876540.0 6951.5 3.364006E-06 4.712324E-08 3 9 1 1 S 6 262 0.03 1500 300 5 .3 .7 .02
609428.3 4876540.0 6941 4.446045E-06 7.693993E-09 3 9 1 1 S 6 263 0.03 1000 30 3 .3 .5 .02
609428.3 4876540.0 6930.25 4.766397E-06 5.591706E-08 3 9 1 1 S 6 264 0.10 2000 70 1 .2 .7 .04
609428.3 4876540.0 6920.75 7.746652E-06 1.076947E-07 3 9 1 1 S 6 265 0.03 1500 50 3 .3 1.5 L(.02)
609428.3 4876540.0 6892.2 2.761416E-06 2.716138E-08 3 9 2 1 S 6 268 0.05 1000 100 3 .15 .7 .02
609428.3 4876540.0 6882.7 2.462617E-06 4.604314E-08 3 9 2 1 S 6 269 0.009 1500 150 1.5 .3 2 .04
609428.3 4876540.0 6873.25 3.939107E-06 4.955869E-08 3 9 2 1 S 6 270 0.009 1000 50 3 .2 1.5 .1
609428.3 4876540.0 6864 2.64993E-06 6.002561E-08 3 9 2 1 S 6 271 0.009 1000 20 3 .2 1.5 .04
609428.3 4876540.0 6864 2.829827E-06 2.462047E-08 3 9 2 1 S 6 272 0.10 1000 100 3 .2 2 .04
609428.3 4876540.0 6854.75 4.274357E-06 2.183927E-07 3 9 2 1 S 6 273 0.26 1500 50 3 .3 2 .06
609428.3 4876540.0 6845.25 5.287087E-06 5.754458E-08 3 9 2 1 S 6 274 0.09 1500 30 1.5 .3 1.5 .02
609428.3 4876540.0 6835.75 2.982922E-06 8.701413E-07 3 9 2 1 S 6 275 0.20 500 7 10 .05 5 .4
609428.3 4876540.0 6835.75 4.809494E-06 1.39976E-07 3 9 2 1 S 6 276 0.05 1000 30 5 .3 .5 L(.02)
609428.3 4876540.0 6826.25 5.411558E-06 3.134729E-08 3 9 2 1 S 6 277 0.03 1500 50 5 .3 1 .04
609428.3 4876540.0 6816.75 8.008273E-06 2.940669E-08 3 9 2 1 S 6 278 0.03 700 100 2 .15 .7 .02
609428.3 4876540.0 6807.35 6.70797E-06 7.042485E-08 3 9 2 1 S 6 279 0.06 1000 15 3 .2 .7 .02
609428.3 4876540.0 6797.85 6.468473E-06 5.467773E-08 3 9 2 1 S 6 280 0.009 1500 50 7 .3 1 L(.02)
609428.3 4876540.0 6788 5.222637E-06 4.1735E-08 3 9 2 1 S 6 281 0.03 1500 70 2 .2 1 .04
609428.3 4876540.0 6778 4.558384E-06 3.1255E-08 3 9 2 1 S 6 282 0.03 500 30 2 .15 .7 .02
609428.3 4876540.0 6768.2 8.139262E-06 8.643044E-08 3 9 2 1 S 6 283 0.06 2000 200 5 .3 1.5 .04
609428.3 4876540.0 6768.2 3.552822E-06 2.797515E-08 3 9 2 1 S 6 284 0.04 2000 500 5 .3 1 .02
609428.3 4876540.0 6758.7 4.592567E-06 3.257128E-08 3 9 2 1 S 6 285 0.03 2000 150 3 .3 1.5 .02
609428.3 4876540.0 6749.5 4.047327E-06 7.652043E-09 3 9 2 1 S 6 286 0.03 3000 100 2 .5 1.5 .04
609428.3 4876540.0 6740.25 6.610339E-06 8.682065E-09 3 9 2 1 S 6 287 0.03 2000 100 3 .3 1.5 .02
609428.3 4876540.0 6730.55 4.718179E-06 6.324528E-08 3 9 2 3 S 6 288 0.09 1500 150 3 .2 .7 .04
609428.3 4876540.0 6721.05 4.982712E-06 9.985342E-09 3 9 2 3 S 6 289 0.09 1000 200 2 .15 .7 .04

609428.3 4876540.0 6711.25 7.168276E-06 4.610293E-08 3 9 2 3 S 6 290 0.05 1500 20 2 .3 .7 .04
609428.3 4876540.0 6701.5 8.287876E-06 1.120276E-07 3 9 2 3 S 6 291 0.10 3000 300 5 .3 2 .02
609428.3 4876540.0 6701.5 6.162049E-06 1.493033E-08 3 9 2 3 S 6 292 0.06 5000 300 5 .3 .5 L(.02)
609428.3 4876540.0 6692 5.636196E-06 7.634146E-08 3 9 2 1 S 6 293 0.18 2000 150 10 .3 .7 L(.02)
609428.3 4876540.0 6682.25 3.151817E-06 1.866919E-08 3 9 2 1 S 6 294 0.06 1000 70 5 .15 1 .02
609428.3 4876540.0 6672.75 4.975151E-06 7.451894E-08 3 9 2 1 S 6 295 0.04 2000 200 7 .3 1 L(.02)
609428.3 4876540.0 6672.75 5.099324E-06 1.522795E-09 3 9 2 1 S 6 295 0.04 2000 200 7 .3 1 L(.02)
609428.3 4876540.0 6663.25 3.895263E-06 8.675215E-09 3 9 2 1 S 6 296 0.03 1500 150 3 .2 1 .04
609428.3 4876540.0 6654 8.589725E-06 4.665529E-08 3 9 2 3 S 6 297 0.03 2000 70 3 .3 1.5 .02
609428.3 4876540.0 6644.25 4.808293E-06 1.187219E-07 3 9 2 1 S 6 298 0.03 2000 50 1.5 .3 1 .02
609428.3 4876540.0 6644.25 4.345736E-06 3.511288E-08 3 9 2 1 S 6 299 0.15 2000 30 2 .2 1 .04
609428.3 4876540.0 6634.5 3.357443E-06 6.141681E-08 3 9 2 1 S 6 300 0.009 500 30 2 .1 .7 .02
609428.3 4876540.0 6625.5 4.901409E-06 6.917613E-08 3 9 2 1 S 6 301 0.05 2000 100 2 .3 .7 .06
609428.3 4876540.0 6616.25 5.762802E-06 5.145784E-08 3 9 2 1 S 6 302 0.09 2000 30 3 .2 1 .02
609428.3 4876540.0 6606.75 5.2846E-06 2.036378E-08 3 9 2 1 S 6 303 0.10 2000 70 3 .3 .7 L(.02)
609428.3 4876540.0 6597.15 3.583411E-06 3.395456E-08 3 9 2 1 S 6 304 0.03 1500 70 7 .3 .7 L(.02)
609428.3 4876540.0 6587.3 3.318563E-06 3.728746E-08 3 9 2 1 S 6 305 0.009 500 30 3 .15 .5 L(.02)
609428.3 4876540.0 6577.65 4.813225E-06 2.422914E-08 3 9 2 1 S 6 306 0.03 1500 150 3 .2 .7 .02
609428.3 4876540.0 6568.1 4.880166E-06 2.99392E-08 3 9 2 1 S 6 307 0.009 1500 15 2 .2 .7 .04
609428.3 4876540.0 6558.45 5.687632E-06 5.747535E-08 3 9 2 1 S 6 308 0.009 700 30 3 .3 .5 .02
609428.3 4876540.0 6558.45 6.883566E-06 5.106682E-08 3 9 2 1 S 6 309 0.06 1000 150 3 .3 1.5 .02
609428.3 4876540.0 6548.85 4.575738E-06 2.556289E-07 3 9 2 1 S 6 310 0.06 3000 50 7 .5 1.5 .02
609428.3 4876540.0 6539.15 5.320251E-06 4.857105E-08 3 9 2 1 S 6 311 0.03 1000 30 2 .2 .5 .02
609428.3 4876540.0 6529.4 7.093582E-06 6.134245E-08 3 9 2 1 S 6 312 0.03 2000 30 2 .3 .7 .04
609428.3 4876540.0 6519.75 5.322321E-06 6.356976E-08 3 9 2 1 S 6 313 0.05 1500 70 5 .3 .7 L(.02)
609428.3 4876540.0 6510.2 5.310051E-06 8.57997E-09 3 9 2 1 S 6 314 0.03 700 150 5 .2 .5 L(.02)
609428.3 4876540.0 6500.7 5.044605E-06 4.806724E-08 3 9 2 1 S 6 315 0.03 1500 30 3 .2 .7 L(.02)
609428.3 4876540.0 6491.2 3.112395E-06 2.060108E-08 3 9 2 1 S 6 316 0.04 1500 150 15 .3 N .02
609428.3 4876540.0 6481.7 4.713905E-06 1.197094E-07 3 9 2 1 S 6 317 0.10 2000 10 5 .3 .7 .02
609428.3 4876540.0 6472 6.192023E-06 1.049959E-07 3 9 2 1 S 6 318 0.05 3000 100 3 .2 L L(.02)
609428.3 4876540.0 6462 3.904938E-06 4.253752E-08 3 9 2 1 S 6 319 0.03 1000 0 3 .2 .5 L(.02)
609428.3 4876540.0 6452.5 4.060254E-06 3.109218E-08 3 9 2 1 S 6 320 0.10 500 20 3 .15 L .02
609428.3 4876540.0 6443.2 4.799886E-06 3.462604E-08 3 9 2 1 S 6 321 0.05 500 50 5 .2 .5 L(.02)
609428.3 4876540.0 6433.2 2.888088E-06 1.719104E-08 3 9 2 1 S 6 322 0.06 300 15 3 .2 N L(.02)
609428.3 4876540.0 6433.2 4.67561E-06 4.242383E-08 3 9 2 1 S 6 323 0.06 1000 20 5 .3 L L(.02)
609428.3 4876540.0 6423.7 3.395677E-06 5.426708E-08 3 9 2 1 S 6 324 0.03 1000 20 2 .3 1.5 .02
609428.3 4876540.0 6414.7 4.263538E-06 1.39242E-09 3 9 2 1 S 6 325 0.18 700 15 5 .2 3 .5
609428.3 4876540.0 6405.5 6.602082E-06 7.197968E-08 3 9 2 1 S 6 326 0.10 700 20 3 .3 .7 L(.02)
609428.3 4876540.0 6396 5.390154E-06 2.033129E-08 3 9 2 1 S 6 327 0.05 300 15 2 .2 N .02
609428.3 4876540.0 6386.35 4.803107E-06 8.456163E-08 3 9 2 1 S 6 328 0.10 300 20 2 .15 L .02
609428.3 4876540.0 6376.85 1.095503E-05 6.813836E-08 3 9 2 1 S 6 329 0.13 1000 200 3 .3 5 .06
609428.3 4876540.0 6367 8.433451E-06 1.586727E-07 3 9 2 1 S 6 330 0.20 500 20 5 .3 .5 L(.02)

609428.3 4876540.0 6357.05 6.059397E-06 3.386906E-08 3 9 2 1 S 6 331 0.05 700 150 3 .3 .7 .04
609428.3 4876540.0 6357.05 3.849027E-06 4.891042E-08 3 9 2 1 S 6 332 0.05 1000 200 5 .3 1 L(.02)
609428.3 4876540.0 6347.3 3.43118E-06 5.601687E-08 3 9 2 1 S 6 333 0.03 1000 300 3 .15 .7 .02
609428.3 4876540.0 6337.45 3.797062E-06 1.563688E-08 3 9 2 1 S 6 334 0.06 1500 150 3 .2 .7 .02
609428.3 4876540.0 6327.9 5.277426E-06 7.03573E-08 3 9 2 1 S 6 335 0.04 1000 20 3 .2 1 .02
609428.3 4876540.0 6318.45 7.653297E-06 5.440755E-08 3 9 2 1 S 6 336 0.06 700 7 2 .3 3 .04
609428.3 4876540.0 6308.75 8.912037E-06 8.079864E-08 3 9 2 1 S 6 337 0.04 700 100 3 .3 .5 .04
609428.3 4876540.0 6299.25 1.029301E-05 1.249184E-07 3 9 2 1 S 6 338 0.15 300 200 2 .3 .5 .04
609428.3 4876540.0 6289.75 1.407069E-05 5.5334E-08 3 9 2 1 S 6 339 0.06 1000 100 5 .2 L L(.02)
609428.3 4876540.0 6289.75 7.501965E-06 7.495731E-08 3 9 2 1 S 6 340 0.009 700 200 5 .3 1 .04
609428.3 4876540.0 6280 8.530753E-06 3.601897E-08 3 9 2 1 S 6 341 0.04 1000 30 3 .3 .7 .02
609428.3 4876540.0 6270.3 5.718E-06 1.616402E-08 3 9 2 1 S 6 342 0.09 300 7 2 .15 L .2
609428.3 4876540.0 6260.8 5.384758E-06 1.837375E-07 3 9 2 1 S 6 343 0.03 1000 50 1.5 .3 2 .04
609428.3 4876540.0 6251.2 8.925937E-06 1.120316E-07 3 9 2 1 S 6 344 0.06 700 15 5 .3 .5 L(.02)
609428.3 4876540.0 6241.7 7.755151E-06 3.231344E-08 3 9 2 1 S 6 345 0.03 700 30 3 .2 1 .02
609428.3 4876540.0 6232 1.51948E-05 1.530198E-07 3 9 2 1 S 6 346 0.06 700 30 3 .2 5 .1
609428.3 4876540.0 6232 5.350356E-06 5.267657E-08 3 9 2 1 S 6 347 0.09 300 30 3 .15 .7 .04
609428.3 4876540.0 6222.4 7.343322E-06 4.6477E-08 3 9 2 1 S 6 348 0.03 200 30 3 .2 L .02
609428.3 4876540.0 6212.9 7.426113E-06 3.836292E-08 3 9 2 1 S 6 349 0.06 1000 10 2 .15 L .02
609428.3 4876540.0 6203 8.004907E-06 9.812786E-08 3 9 2 1 S 6 350 0.06 1500 20 3 .3 .5 L(.02)
609428.3 4876540.0 6203 6.372138E-06 8.694401E-08 3 9 2 1 S 6 351 0.04 2000 50 3 .2 L L(.02)
609428.3 4876540.0 6195 4.377044E-06 8.926266E-08 3 9 2 1 S 6 352 0.05 1500 30 5 .3 .7 .02
609295.3 4876077.1 7337.5 5.057398E-06 4.596887E-08 1 9 3 3 S 7 353 0.03 5000 100 7 .3 .5 L(.02)
609295.3 4876077.1 7274 1.490149E-05 3.525884E-07 1 9 3 3 S 7 354 0.06 1500 70 1.5 .15 .7 .04
609295.3 4876077.1 7261.5 3.246827E-06 8.461191E-08 1 9 3 3 S 7 355 0.13 3000 150 1 .2 1 .04
609295.3 4876077.1 7256 5.374662E-06 2.125576E-07 1 9 3 3 S 7 356 0.06 5000 150 1 .2 .7 .1
609295.3 4876077.1 7247 2.594044E-06 5.420429E-08 1 9 3 3 S 7 357 0.09 1000 70 1 .15 .5 .06
609295.3 4876077.1 7237 2.570896E-06 7.208109E-08 1 9 3 3 S 7 358 0.03 1500 100 1 .15 .5 .04
609295.3 4876077.1 7237 4.136639E-06 1.138712E-07 1 9 3 3 S 7 359 0.05 5000 200 3 .3 1 .04
609295.3 4876077.1 7225.3 3.688698E-06 3.844547E-08 1 9 3 3 S 7 360 0.18 3000 200 1.5 .3 .7 .04
609295.3 4876077.1 7212.8 3.604862E-06 4.742954E-08 1 9 3 3 S 7 361 0.05 5000 300 5 .5 1 .06
609295.3 4876077.1 7201.5 3.829467E-06 2.643384E-08 1 9 2 3 S 7 362 0.06 2000 100 1 .3 .7 .06
609295.3 4876077.1 7189.75 4.270572E-06 5.600759E-08 1 9 2 3 S 7 363 0.03 3000 200 2 .3 1 .06
609295.3 4876077.1 7178.25 5.448802E-06 7.353766E-08 1 9 2 3 S 7 364 0.03 2000 200 1 .2 .7 .06
609295.3 4876077.1 7167.75 3.734857E-06 6.823662E-08 1 9 2 3 S 7 365 0.18 3000 200 1 .5 1 .02
609295.3 4876077.1 7157.75 4.340734E-06 6.014622E-08 1 9 2 3 S 7 366 0.09 1500 100 .7 .15 .5 .04
609295.3 4876077.1 7147.5 -2.074968E-08 2.934448E-08 1 9 2 3 S 7 367 0.40 3000 100 5 .3 1 L(.02)
609295.3 4876077.1 7147.5 3.581872E-06 4.574695E-08 1 9 2 3 S 7 368 0.009 3000 500 2 .3 1 .04
609295.3 4876077.1 7137 5.270561E-06 2.314982E-08 1 9 2 3 S 7 369 0.10 1500 70 .7 .15 .7 .04
609295.3 4876077.1 7127.25 4.041433E-06 1.804165E-08 1 9 2 3 S 7 370 0.12 1000 70 .7 .1 .7 .06
609295.3 4876077.1 7117.25 5.255256E-06 1.433363E-08 1 9 2 3 S 7 371 0.03 1500 50 1 .2 .5 .04
609295.3 4876077.1 7104.75 7.353925E-06 8.389572E-08 1 9 2 3 S 7 372 0.09 1500 70 1.5 .3 2 .02

609295.3 4876077.1 7091.5 2.920297E-06 8.505731E-08 1 9 2 3 S 7 373 0.06 700 50 .7 .15 .5 .04
609295.3 4876077.1 7080.25 5.269851E-06 9.039013E-09 1 9 2 3 S 7 374 0.18 1500 150 1 .15 1 .06
609295.3 4876077.1 7080.25 5.304739E-06 8.396046E-08 1 9 2 3 S 7 375 0.03 2000 300 2 .2 1 .04
609295.3 4876077.1 7069 5.653297E-06 8.110784E-08 1 9 2 3 S 7 376 0.03 1500 70 2 .2 2 .04
609295.3 4876077.1 7056.5 3.691508E-06 4.466502E-08 1 9 2 3 S 7 377 0.05 1500 100 .7 .2 .5 .04
609295.3 4876077.1 7056.5 4.464056E-06 4.464073E-08 1 9 2 3 S 7 377 0.05 1500 100 .7 .2 .5 .04
609295.3 4876077.1 7044.75 2.599294E-06 1.577199E-08 1 9 2 3 S 7 378 0.10 2000 100 .7 .2 .7 .06
609295.3 4876077.1 7044.75 2.914363E-06 1.573288E-08 1 9 2 3 S 7 378 0.10 2000 100 .7 .2 .7 .06
609295.3 4876077.1 7035.5 3.31351E-06 1.606359E-08 1 9 2 3 S 7 379 0.45 2000 100 1 .3 1 .04
609295.3 4876077.1 7027 2.995929E-06 2.607781E-08 1 9 2 3 S 7 380 0.04 5000 150 1.5 .3 2 .06
609295.3 4876077.1 7019 3.946035E-06 3.208152E-08 1 9 2 3 S 7 381 0.12 5000 200 2 .3 3 .1
609295.3 4876077.1 7010.75 3.404933E-06 3.565356E-08 1 9 2 3 S 7 382 0.15 1500 100 1 .15 .7 .06
609295.3 4876077.1 7001 4.017766E-06 6.783816E-08 1 9 2 3 S 7 383 0.09 2000 150 1 .3 1 .06
609295.3 4876077.1 6992 4.157627E-06 5.618404E-08 1 9 2 3 S 7 384 0.03 2000 200 2 .2 1 .04
609295.3 4876077.1 6992 3.239482E-06 2.880818E-08 1 9 2 3 S 7 385 0.12 3000 300 1.5 .3 1 .04
609295.3 4876077.1 6983 3.756402E-06 2.425258E-08 1 9 2 3 S 7 386 0.20 1500 150 .7 .15 1 .02
609295.3 4876077.1 6964.75 6.748969E-06 6.971979E-08 1 9 2 3 S 7 388 0.15 5000 200 2 .5 3 .06
609295.3 4876077.1 6956.75 5.399736E-06 2.945684E-07 1 9 2 3 S 7 389 0.009 3000 300 10 .5 .5 L(.02)
609295.3 4876077.1 6939 4.783252E-06 8.664069E-08 1 9 2 3 S 7 391 0.009 3000 200 1.5 .2 1.5 .04
609295.3 4876077.1 6929.5 4.328567E-06 4.084853E-08 1 9 2 3 S 7 392 0.03 3000 150 2 .2 2 .08
609295.3 4876077.1 6929.5 4.393393E-06 4.65725E-08 1 9 2 3 S 7 393 0.10 1500 200 1 .15 1 .04
609295.3 4876077.1 6919.5 5.083341E-06 1.016567E-07 1 9 2 3 S 7 394 0.03 3000 300 2 .3 1 L(.02)
609295.3 4876077.1 6909.5 4.792549E-06 1.479157E-08 1 9 2 3 S 7 395 0.05 3000 150 2 .3 .7 .06
609295.3 4876077.1 6899.75 5.135354E-06 5.902712E-08 1 9 2 3 S 7 396 0.009 1500 150 1 .3 1 L(.02)
609295.3 4876077.1 6899.75 2.92589E-06 8.583167E-08 1 9 2 3 S 7 397 0.03 2000 200 3 .5 3 .02
609295.3 4876077.1 6892.25 3.596043E-06 7.208568E-08 1 9 2 3 S 7 398 0.15 2000 200 1 .3 1 .04
608934.2 4876119.0 7141 4.445233E-04 6.220071E-07 1 9 1 1 S 8 399 0.03 1500 5 3 .2 .7 .04
608934.2 4876119.0 7132 3.609487E-04 2.515117E-06 1 9 2 3 S 8 400 0.03 1000 15 3 .3 .5 .06
608934.2 4876119.0 7132 4.092166E-04 2.505406E-06 1 9 2 3 S 8 401 0.09 500 50 3 .3 .5 .06
608934.2 4876119.0 7122.75 4.576632E-04 1.043974E-06 1 9 2 3 S 8 402 0.15 300 5 5 .3 1 .04
608934.2 4876119.0 7113.75 4.14044E-04 5.791675E-06 1 9 2 3 S 8 403 0.06 700 15 2 .3 .5 L(.02)
608934.2 4876119.0 7104 3.386388E-04 9.494543E-07 1 9 2 3 S 8 404 0.04 500 5 2 .15 L .04
608934.2 4876119.0 7094.5 4.54529E-04 8.724292E-07 1 9 2 3 S 8 405 0.05 150 10 7 .3 1 .02
608934.2 4876119.0 7084.5 3.981681E-04 1.274412E-06 1 9 2 3 S 8 406 0.03 200 30 3 .3 L .04
608934.2 4876119.0 7084.5 4.070272E-04 3.909025E-06 1 9 2 3 S 8 407 0.20 200 5 2 .2 1 .02
608934.2 4876119.0 7075.25 3.181813E-04 8.029555E-07 1 9 2 3 S 8 408 0.04 150 15 2 .2 L .04
608934.2 4876119.0 7066.75 3.819327E-04 1.128257E-06 1 9 2 3 S 8 409 0.009 150 20 2 .2 .5 .02
608934.2 4876119.0 7057.5 3.586235E-04 3.997256E-06 1 9 2 3 S 8 410 0.06 100 15 1.5 .3 N .04
608934.2 4876119.0 7048 3.787692E-04 1.667913E-06 1 9 2 3 S 8 411 0.03 70 15 2 .3 N L(.02)
608934.2 4876119.0 7048 4.479167E-04 2.078563E-06 1 9 2 3 S 8 412 0.10 100 10 2 .3 N .04
608934.2 4876119.0 7041.5 4.782695E-04 1.726619E-06 1 9 2 3 S 8 413 0.06 100 15 2 .3 .5 L(.02)

Table 2. Measured magnetic susceptibility, alteration class, and selected chemical analysis for the 700 samples from drillholes from the Stinkingwater Mining district, Absaroka Mountains, Wyoming. Values are UTM e, UTM n, altitude(ft),magnetic susceptibility (cgs/g), standard deviation of magnetic susceptibility (cgs/g), lithology code, texture code, oxidized/enriched code, alteration class code, borehole group code, hole number, sampl number, Hg(ppm), Cu(ppm),Mo(ppm), total Fe(%), Ti(%), Ag(ppm), Au(ppm). N or N() and L or L() have been replaced by numeric values. See text for explanation of codes and replaced values; UTM coordinates are zone 12N.

These data are available in ASCII form at <http://pubs.usgs.gov/of/2004/1253/table2.txt>

The files http://pubs.usgs.gov/of/2004/1253/datafile_format.txt and <http://pubs.usgs.gov/of/2004/1253/heading.txt> are ASCII files describing the data format and headings.

609121.5	4875939.6	7603	2.554834E-06	2.936252E-08	1	3	1	2	N	1	1	0.30	55	150	2	.3	1.5	0.01
609121.5	4875939.6	7593	1.116083E-05	8.680806E-08	1	3	1	2	N	1	2	0.08	90	150	3	.3	1	0.01
609121.5	4875939.6	7583	2.155997E-06	4.052591E-08	1	3	1	2	N	1	3	0.10	85	150	3	.3	.5	0.01
609121.5	4875939.6	7573	2.694983E-06	1.739543E-08	1	3	1	2	N	1	4	0.08	120	200	3	.3	.5	0.01
609121.5	4875939.6	7563	1.626001E-06	7.12903E-08	1	3	1	2	N	1	5	0.10	85	300	3	.3	.5	0.01
609121.5	4875939.6	7523	3.949657E-06	2.47861E-06	1	3	1	2	N	1	9	0.06	150	300	2	.3	1	0.01
609121.5	4875939.6	7523	2.713721E-06	2.568007E-07	1	3	1	2	N	1	9	0.06	150	300	2	.3	1	0.01
609121.5	4875939.6	7513	2.002277E-06	1.122869E-07	1	2	1	2	N	1	10	0.10	120	100	1.5	.3	1	0.01
609121.5	4875939.6	7503	2.396971E-06	1.612762E-08	1	2	1	2	N	1	11	0.08	250	150	3	.3	1	0.015
609121.5	4875939.6	7493	2.807801E-06	7.87546E-08	1	2	1	2	N	1	12	0.02	320	200	5	.3	1	0.015
609121.5	4875939.6	7483	2.352235E-06	1.512285E-07	1	2	1	2	N	1	13	0.06	130	150	3	.3	.5	0.01
609121.5	4875939.6	7473	3.112092E-06	1.064787E-07	1	2	1	2	N	1	14	0.10	240	700	3	.2	.5	0.01
609121.5	4875939.6	7463	2.938187E-06	9.614186E-08	1	2	1	2	N	1	15	0.06	150	300	3	.3	0.01	0.01
609121.5	4875939.6	7453	2.435118E-06	2.393517E-08	1	2	1	2	N	1	16	0.04	130	300	3	.3	.5	0.01
609121.5	4875939.6	7443	2.232361E-06	3.272604E-07	1	2	1	2	N	1	17	0.06	220	300	3	.3	1	0.01
609121.5	4875939.6	7433	2.299899E-06	1.855749E-07	1	2	1	2	N	1	18	0.08	100	500	3	.3	3	0.01
609121.5	4875939.6	7413	3.656154E-06	2.43275E-07	1	3	1	2	N	1	20	0.04	350	150	7	.2	1	0.01
609121.5	4875939.6	7403	3.46172E-06	5.018922E-07	1	3	1	2	N	1	21	0.06	290	200	5	.2	.5	0.01
609121.5	4875939.6	7393	3.233902E-06	9.018574E-08	1	3	1	2	N	1	22	0.04	350	200	5	.3	1	0.01
609121.5	4875939.6	7383	2.782429E-06	1.537564E-07	1	3	1	2	N	1	23	0.04	480	70	5	.2	1	0.01
609121.5	4875939.6	7373	3.063128E-06	4.241098E-08	1	3	1	2	N	1	24	0.08	350	300	7	.3	.7	0.01
609121.5	4875939.6	7363	1.569503E-06	6.370892E-07	1	3	1	2	N	1	25	0.06	340	300	3	.3	.5	0.01
609121.5	4875939.6	7343	1.352578E-06	2.049123E-07	1	3	3	2	N	1	27	0.06	3900	300	2	.2	2	0.01
609121.5	4875939.6	7333	3.037918E-06	2.921192E-06	1	3	3	2	N	1	28	0.04	4900	300	3	.3	1.5	0.01
609121.5	4875939.6	7333	1.73612E-06	6.685621E-07	1	3	3	2	N	1	28	0.04	4900	300	3	.3	1.5	0.01
609121.5	4875939.6	7323	1.753769E-06	3.324467E-07	1	3	3	2	N	1	29	0.02	4000	150	2	.3	1	0.01
609121.5	4875939.6	7313	1.951879E-06	5.987416E-07	1	3	3	2	N	1	30	0.06	2700	70	2	.2	1	0.01
609121.5	4875939.6	7303	1.391169E-06	3.336056E-07	1	3	3	2	N	1	31	0.10	3300	100	2	.3	1	0.01
609121.5	4875939.6	7243	3.198825E-06	1.600256E-07	1	3	2	2	N	1	37	0.06	3300	200	3	.2	1	0.01

609121.5 4875939.6 7233 1.896758E-06 4.860253E-08 1 3 2 2 N 1 38 0.08 2000 300 2 .3 .5 0.01
609121.5 4875939.6 7223 2.374395E-06 5.506236E-08 1 3 2 2 N 1 39 0.06 2300 300 2 .2 1 0.01
609121.5 4875939.6 7213 2.558427E-06 3.794349E-07 1 3 2 2 N 1 40 0.04 2800 100 3 .3 1 0.01
609121.5 4875939.6 7203 2.311801E-06 1.92928E-07 1 3 2 2 N 1 41 0.02 2600 150 2 .3 .5 0.01
609121.5 4875939.6 7193 1.65705E-06 5.962515E-07 1 3 2 2 N 1 42 0.06 2000 70 1.5 .3 .7 0.015
609121.5 4875939.6 7184.5 3.865458E-06 6.732548E-06 1 3 2 2 N 1 43 0.02 2200 100 2 .5 1 0.01
608873.0 4876142.0 7217 1.225769E-04 6.306202E-07 1 2 2 3 N 3 44 0.02 170 15 2 .3 .5 0.01
608873.0 4876142.0 7208 1.631122E-04 4.272244E-07 1 2 2 3 N 3 45 0.02 290 10 3 .5 .5 0.01
608873.0 4876142.0 7198 2.614733E-04 6.15113E-07 1 2 2 3 N 3 46 0.04 650 70 2 .3 .7 0.01
608873.0 4876142.0 7188 4.384847E-04 1.086048E-06 1 2 2 3 N 3 47 0.02 1200 0 3 .7 .5 0.01
608873.0 4876142.0 7178 2.926848E-04 2.119949E-06 1 2 2 3 N 3 48 0.04 2000 5 3 .7 .7 0.01
608873.0 4876142.0 7168 3.624313E-04 1.215701E-06 1 2 2 3 N 3 49 0.02 740 0 3 .5 .5 0.01
608873.0 4876142.0 7158 2.395881E-04 2.231197E-06 1 2 2 3 N 3 50 0.02 1300 0 2 .5 .5 0.01
608873.0 4876142.0 7148 2.54929E-04 6.447229E-07 1 2 2 3 N 3 51 0.02 370 15 2 .7 0.45 0.01
608873.0 4876142.0 7138 3.385178E-05 1.650938E-07 1 2 2 3 N 3 52 0.20 450 7 2 .3 3 0.01
608873.0 4876142.0 7128 1.066505E-04 1.982471E-07 1 2 2 3 N 3 53 0.02 1700 10 3 .7 1.5 0.01
608873.0 4876142.0 7118 2.086506E-04 6.563281E-07 1 2 2 3 N 3 54 0.06 2300 0 3 .5 2 0.01
608873.0 4876142.0 7108 4.277326E-05 1.771766E-07 1 2 2 3 N 3 55 0.02 1100 0 1 .3 0.01 0.01
608873.0 4876142.0 7098 7.106361E-05 3.802556E-06 1 2 2 3 N 3 56 0.06 950 15 1.5 .7 0.45 0.01
608873.0 4876142.0 7088 1.854339E-04 3.358551E-07 1 2 2 3 N 3 57 0.04 1100 0 3 .7 1 0.015
608873.0 4876142.0 7078 9.316193E-05 2.225218E-07 1 2 2 3 N 3 58 0.12 2100 0 2 .5 1 0.01
608873.0 4876142.0 7068 2.033675E-04 7.071382E-07 1 2 2 3 N 3 59 0.02 1300 0 2 .5 .7 0.01
608873.0 4876142.0 7038 1.515596E-04 2.107343E-07 1 2 2 3 N 3 62 0.02 480 70 1.5 .7 0.01 0.01
608879.9 4875712.9 7714.5 2.114638E-05 5.455993E-08 1 3 3 2 N 4 63 0.06 1100 15 3 .7 1.5 0.01
608879.9 4875712.9 7705 2.999313E-06 1.847854E-07 1 3 3 2 N 4 64 0.02 1300 15 2 .15 .5 0.01
608879.9 4875712.9 7695 3.876135E-06 9.726466E-07 1 3 3 2 N 4 65 0.02 1300 0 5 .3 0.01 0.01
608879.9 4875712.9 7695 4.566522E-06 1.934664E-07 1 3 3 2 N 4 65 0.02 1300 0 5 .3 0.01 0.01
608879.9 4875712.9 7685 2.933274E-06 5.847156E-08 1 3 3 2 N 4 66 0.02 2600 0 3 .3 .5 0.01
608879.9 4875712.9 7675 1.836612E-06 5.882004E-08 1 3 3 2 N 4 67 0.02 1800 0 3 .2 .5 0.01
608879.9 4875712.9 7665 1.345865E-06 3.8496E-08 1 3 3 2 N 4 68 0.08 2100 20 5 .3 .5 0.01
608879.9 4875712.9 7655 2.237614E-06 4.178516E-08 1 3 3 2 N 4 69 0.06 1600 30 5 .15 0.45 0.01
608879.9 4875712.9 7645 1.996478E-06 4.55111E-08 1 3 3 2 N 4 70 0.50 1300 10 10 .2 0.01 0.01
608879.9 4875712.9 7635 1.894504E-06 8.821639E-08 1 2 3 2 N 4 71 0.14 1700 70 5 .2 .7 0.015
608879.9 4875712.9 7625 1.887904E-06 7.251347E-07 1 2 3 2 N 4 72 0.10 3000 15 3 .2 .7 0.015
608879.9 4875712.9 7615 1.740938E-05 1.373567E-07 1 2 3 2 N 4 73 0.04 2000 0 10 .15 0.01 0.015
608879.9 4875712.9 7605 2.904898E-06 5.34132E-08 1 2 3 2 N 4 74 0.02 1300 0 7 .2 0.01 0.015
608879.9 4875712.9 7615 1.73379E-05 2.027633E-07 1 2 3 2 N 4 73 0.04 2000 0 10 .15 0.01 0.015
608879.9 4875712.9 7595 2.298653E-06 7.240396E-08 1 2 3 2 N 4 75 0.02 2500 15 5 .15 0.45 0.015
608879.9 4875712.9 7585 2.097799E-06 8.602643E-08 1 3 3 2 N 4 76 0.08 2400 5 3 .2 .5 0.015
608879.9 4875712.9 7575 1.988147E-06 1.260799E-07 1 3 3 2 N 4 77 0.04 2800 50 3 .15 .5 0.015
608879.9 4875712.9 7565 5.293146E-06 1.57993E-07 1 3 3 2 N 4 78 0.16 2100 20 3 .3 0.01 0.015
608879.9 4875712.9 7555 3.130043E-06 4.671954E-08 1 1 3 2 N 4 79 0.02 1900 7 3 .3 .5 0.015

608879.9	4875712.9	7545	2.555076E-06	1.106443E-07	1	1	3	2	N	4	80	0.02	1300	15	3	.3	0.01	0.015
608879.9	4875712.9	7535	1.452004E-06	3.855509E-08	1	1	3	2	N	4	81	0.04	1400	100	7	.3	0.01	0.01
608879.9	4875712.9	7525	2.207092E-06	5.352137E-07	1	1	3	2	N	4	82	0.02	860	0	5	.2	0.01	0.01
608879.9	4875712.9	7515	2.352005E-06	1.43551E-07	1	1	3	2	N	4	83	0.02	1500	50	7	.2	0.01	0.01
608879.9	4875712.9	7505	2.542474E-06	1.16256E-07	1	3	3	2	N	4	84	0.02	1500	0	5	.3	0.01	0.01
608879.9	4875712.9	7495	2.814844E-06	1.049124E-07	1	3	3	2	N	4	85	0.02	1400	50	3	.2	0.01	0.01
608879.9	4875712.9	7485	1.971502E-05	3.204616E-08	1	3	3	2	N	4	86	0.04	2000	0	3	.2	0.01	0.01
608879.9	4875712.9	7475	1.038036E-04	2.205171E-07	2	9	9	9	N	4	87	0.02	510	0	3	.2	0.01	0.01
608879.9	4875712.9	7465	4.968179E-05	1.521452E-07	2	9	9	9	N	4	88	0.02	910	0	3	.3	0.01	0.01
608879.9	4875712.9	7455	2.666777E-04	3.675969E-06	2	9	9	9	N	4	89	0.04	780	0	3	.3	0.01	0.01
608879.9	4875712.9	7445	2.020932E-04	2.064766E-07	2	9	9	9	N	4	90	0.04	680	0	3	.2	0.01	0.01
608879.9	4875712.9	7435	2.609202E-04	4.172325E-07	2	9	9	9	N	4	91	0.02	85	0	3	.2	0.01	0.01
608879.9	4875712.9	7425	1.517612E-04	3.781491E-07	2	9	9	9	N	4	92	0.18	960	0	3	.2	1	.10
608879.9	4875712.9	7415	4.802835E-05	3.780757E-07	1	3	3	2	N	4	93	0.02	600	0	3	.2	0.01	0.01
608879.9	4875712.9	7405	4.049136E-06	3.349872E-07	1	3	3	2	N	4	94	0.04	2200	10	3	.15	.5	.05
608879.9	4875712.9	7395	2.539714E-06	1.243882E-07	1	3	3	2	N	4	95	0.04	2000	15	3	.15	1	0.01
608879.9	4875712.9	7385	1.273657E-04	3.391447E-07	2	9	9	9	N	4	96	0.02	1100	0	3	.3	0.01	0.01
608879.9	4875712.9	7375	1.586537E-04	2.723287E-07	2	9	9	9	N	4	97	0.02	980	0	3	.3	0.01	0.01
608879.9	4875712.9	7365	4.905386E-05	4.899288E-07	2	9	9	9	N	4	98	0.02	340	0	3	.3	3	.60
608879.9	4875712.9	7355	2.157393E-05	1.452863E-07	2	9	9	9	N	4	99	0.04	1100	0	3	.3	0.01	0.01
608879.9	4875712.9	7345	1.154257E-04	5.153304E-07	1	3	2	2	N	4	100	0.02	730	15	5	.3	0.01	0.01
608879.9	4875712.9	7335	8.118936E-06	5.672726E-07	1	3	2	2	N	4	101	0.04	1000	15	3	.15	0.01	0.01
608879.9	4875712.9	7325	3.840327E-07	3.076636E-06	1	3	2	2	N	4	102	0.02	1500	30	5	.15	0.01	0.01
608879.9	4875712.9	7325	4.966387E-06	2.973244E-06	1	3	2	2	N	4	102	0.02	1500	30	5	.15	0.01	0.01
608879.9	4875712.9	7315	3.161761E-06	4.716489E-07	1	3	2	2	N	4	103	0.08	1300	50	3	.2	0.01	0.01
608879.9	4875712.9	7305	2.584996E-06	1.014249E-07	1	3	2	2	N	4	104	0.08	2100	20	3	.15	0.45	0.01
608879.9	4875712.9	7295	3.192753E-06	3.603388E-08	1	3	2	2	N	4	105	0.06	1200	10	3	.15	0.01	0.01
608879.9	4875712.9	7285	3.359446E-06	4.987054E-07	1	3	2	2	N	4	106	0.06	1600	10	2	.15	.5	0.01
608879.9	4875712.9	7276.5	1.616926E-06	1.596118E-07	1	3	2	2	N	4	107	0.06	1800	30	3	.2	0.01	0.01
609624.6	4876139.6	7575	1.498671E-05	6.508073E-07	1	1	2	3	N	5	108	0.04	1700	30	5	.3	3	0.01
609624.6	4876139.6	7564	2.911907E-05	6.601231E-08	1	1	2	3	N	5	109	0.02	1700	0	7	.3	.7	0.015
609624.6	4876139.6	7554	2.482959E-05	8.51129E-08	1	1	2	3	N	5	110	0.02	1600	10	7	.3	2	0.015
609624.6	4876139.6	7544	1.813098E-05	2.945101E-08	1	1	2	3	N	5	111	0.06	1300	0	5	.5	1	0.015
609624.6	4876139.6	7534	6.529596E-06	1.326473E-07	1	1	2	3	N	5	112	0.02	2700	30	5	.3	3	0.015
609624.6	4876139.6	7524	6.157584E-06	1.644885E-07	1	1	2	3	N	5	113	0.02	1600	30	3	.3	1.5	0.015
609624.6	4876139.6	7514	6.459742E-06	2.869789E-07	1	2	2	1	N	5	114	0.02	3100	30	3	.3	2	0.015
609624.6	4876139.6	7504	6.704679E-06	5.759912E-08	1	2	2	1	N	5	115	0.02	1300	10	5	.3	.5	0.01
609624.6	4876139.6	7494	2.668176E-06	8.214975E-07	1	2	2	1	N	5	116	0.02	600	0	3	.15	0.45	0.01
609624.6	4876139.6	7484	3.564367E-06	1.839115E-07	1	2	2	1	N	5	117	0.02	1100	0	3	.2	0.45	0.01
609624.6	4876139.6	7474	8.101746E-06	1.385012E-07	1	2	2	1	N	5	118	0.02	750	15	3	.2	0.45	0.01
609624.6	4876139.6	7464	3.987996E-06	5.730094E-08	1	2	2	1	N	5	119	0.04	710	0	5	.15	1.5	0.01
609624.6	4876139.6	7454	3.815929E-06	8.902903E-08	1	2	2	1	N	5	120	0.02	460	0	3	.2	0.01	0.01

609624.6	4876139.6	7444	3.674906E-06	7.658819E-08	1	2	2	1	N	5	121	0.04	320	70	3	.2	0.01	0.015
609624.6	4876139.6	7434	2.810993E-06	1.551313E-07	1	2	2	1	N	5	122	0.12	450	100	3	.15	0.01	0.015
609624.6	4876139.6	7424	3.705568E-06	1.901815E-08	1	2	2	1	N	5	123	0.04	410	70	3	.15	0.01	0.01
609624.6	4876139.6	7414	2.731181E-06	6.596302E-08	1	2	2	1	N	5	124	0.10	1800	50	3	.2	.7	0.01
609624.6	4876139.6	7404	2.775589E-06	4.388926E-07	1	2	2	2	N	5	125	0.20	1900	10	3	.3	3	0.01
609624.6	4876139.6	7394	2.714923E-06	6.845825E-07	1	2	2	2	N	5	126	0.02	1100	0	3	.15	.5	0.01
609624.6	4876139.6	7384	4.547203E-06	1.428708E-07	1	2	2	2	N	5	127	0.08	600	10	3	.3	.5	0.01
609624.6	4876139.6	7374	3.310944E-06	1.118557E-08	1	2	2	2	N	5	128	0.08	630	0	3	.15	.5	0.01
609624.6	4876139.6	7364	4.12951E-06	1.802368E-07	1	2	2	2	N	5	129	0.04	1300	20	3	.15	.5	0.01
609624.6	4876139.6	7354	3.09914E-06	3.951004E-07	1	2	2	2	N	5	130	0.10	1700	15	3	.15	1	0.01
609624.6	4876139.6	7344	2.455637E-06	4.316482E-08	1	2	2	2	N	5	131	0.04	700	10	2	.15	0.45	0.01
609624.6	4876139.6	7335	3.126087E-06	6.780009E-07	1	2	2	2	N	5	132	0.10	2200	0	3	.15	1.5	0.01
609131.6	4875713.2	8140.5	1.245071E-06	1.021049E-07	1	2	1	2	N	6	182	0.14	210	0	2	.15	0.01	0.01
609131.6	4875713.2	8132	1.639264E-06	9.820762E-08	1	2	1	2	N	6	183	0.06	55	0	2	.2	0.01	0.015
609131.6	4875713.2	8122	1.514676E-06	7.594314E-08	1	2	1	2	N	6	184	0.08	25	0	2	.2	0.01	0.01
609131.6	4875713.2	8112	1.917704E-06	6.241165E-08	1	2	1	2	N	6	185	0.06	410	0	3	.2	1	0.01
609131.6	4875713.2	8102	1.257793E-06	6.343898E-08	1	2	1	2	N	6	186	0.06	40	0	3	.2	0.01	0.01
609131.6	4875713.2	8092	3.669259E-06	2.525327E-08	1	3	1	2	N	6	187	0.04	380	100	5	.5	0.45	0.01
609131.6	4875713.2	8082	2.590583E-06	3.793068E-08	1	3	1	2	N	6	188	0.06	760	50	3	.3	0.45	0.01
609131.6	4875713.2	8072	3.139642E-06	2.563253E-08	1	3	1	2	N	6	189	0.06	490	20	3	.3	0.45	0.01
609131.6	4875713.2	8062	3.069414E-06	2.598123E-08	1	3	1	2	N	6	190	0.04	90	20	3	.2	0.01	0.01
609131.6	4875713.2	8052	-1.289443E-06	6.043945E-06	1	3	1	2	N	6	191	0.10	60	30	2	.2	0.01	0.01
609131.6	4875713.2	8042	2.441664E-06	1.361401E-07	1	3	1	2	N	6	192	0.06	90	70	3	.15	0.45	0.01
609131.6	4875713.2	8022	2.72108E-06	3.537503E-07	1	3	1	2	N	6	194	0.06	100	100	2	.2	0.01	0.01
609131.6	4875713.2	8002	2.139329E-06	2.588088E-08	1	3	1	2	N	6	196	0.20	310	50	3	.15	0.01	0.01
609131.6	4875713.2	7992	2.597305E-06	1.079591E-08	1	3	1	2	N	6	197	0.16	240	50	2	.15	1	0.01
609131.6	4875713.2	7982	2.453267E-06	8.521411E-08	1	3	1	2	N	6	198	0.12	280	70	3	.2	.5	0.01
609131.6	4875713.2	7972	1.798866E-06	2.510601E-07	1	3	1	2	N	6	199	0.02	310	10	3	.2	0.01	0.01
609131.6	4875713.2	7962	3.347082E-06	2.176687E-08	1	3	1	2	N	6	200	0.16	630	10	5	.2	0.01	0.01
609131.6	4875713.2	7952	3.65527E-06	1.013816E-08	1	3	1	2	N	6	201	0.10	740	15	3	.2	0.01	0.015
609131.6	4875713.2	7942	2.176792E-06	2.348475E-08	1	3	1	2	N	6	202	0.06	680	150	5	.15	0.01	0.015
609131.6	4875713.2	7932	2.0994E-06	3.790923E-08	1	2	2	3	N	6	203	0.08	790	20	5	.2	0.01	0.015
609131.6	4875713.2	7922	3.076443E-06	2.353585E-07	1	2	2	3	N	6	204	0.12	3000	30	3	.2	0.45	0.01
609131.6	4875713.2	7912	3.768908E-06	5.606164E-07	1	2	2	3	N	6	205	0.06	1200	10	3	.2	0.01	0.01
609131.6	4875713.2	7902	2.104529E-06	4.312622E-07	1	3	2	2	N	6	206	0.04	1700	0	7	.2	0.01	0.015
609131.6	4875713.2	7892	1.780634E-06	1.89271E-07	1	3	2	2	N	6	207	0.14	490	20	7	.15	0.01	0.01
609131.6	4875713.2	7882	2.191291E-06	1.191879E-07	1	3	2	2	N	6	208	0.02	1500	0	3	.15	0.01	0.01
609131.6	4875713.2	7872	2.986576E-06	9.693699E-08	1	3	2	2	N	6	209	0.04	780	70	5	.15	0.01	0.01
609131.6	4875713.2	7862	1.31911E-06	1.745997E-08	1	3	2	2	N	6	210	0.08	2600	0	3	.15	0.45	0.01
609131.6	4875713.2	7852	2.161216E-06	3.101554E-07	1	3	2	2	N	6	211	0.04	1200	20	3	.1	0.01	0.01
609131.6	4875713.2	7842	2.19608E-06	4.402897E-07	1	3	2	2	N	6	212	0.16	1500	15	3	.15	0.01	0.01
609131.6	4875713.2	7832	2.263366E-06	5.556016E-07	1	3	2	2	N	6	213	0.02	1300	0	3	.15	0.01	0.01

609131.6	4875713.2	7822	2.590092E-06	1.765962E-07	1	3	2	2	N	6	214	0.10	1700	5	3	.1	0.01	0.01
609131.6	4875713.2	7812	1.831538E-06	3.879694E-07	1	3	2	2	N	6	215	0.10	1900	0	3	.15	0.01	0.015
609131.6	4875713.2	7802	1.082305E-06	5.984644E-07	1	3	2	2	N	6	216	0.06	1800	0	3	.15	0.01	0.015
609131.6	4875713.2	7792	1.231907E-06	2.766017E-07	1	3	2	2	N	6	217	0.06	1900	0	3	.15	0.01	0.01
609131.6	4875713.2	7782	1.254573E-06	4.873007E-08	1	3	2	2	N	6	218	0.06	1400	0	3	.15	0.01	0.01
609131.6	4875713.2	7772	1.34155E-06	1.010202E-07	1	3	2	2	N	6	219	0.06	1500	0	3	.15	0.01	0.01
609131.6	4875713.2	7752	1.811455E-06	2.625143E-07	1	3	2	2	N	6	221	0.04	630	10	3	.15	0.01	0.01
609131.6	4875713.2	7742	9.777841E-06	2.940857E-07	1	3	2	2	N	6	222	0.04	2100	70	5	.2	.5	0.01
609131.6	4875713.2	7732	1.786451E-06	1.757489E-07	1	3	2	2	N	6	223	0.02	1000	30	3	.1	0.01	0.01
609131.6	4875713.2	7722	2.119259E-06	1.242417E-06	1	3	2	2	N	6	224	0.04	1300	5	3	.15	0.01	0.01
609131.6	4875713.2	7712	1.872693E-06	4.56817E-08	1	1	2	2	N	6	225	0.08	1600	5	3	.1	0.01	0.01
609131.6	4875713.2	7702	1.868944E-06	2.952761E-07	1	1	2	2	N	6	226	0.02	1500	100	2	.15	0.01	0.01
609131.6	4875713.2	7692	2.576849E-06	4.06141E-08	1	2	2	2	N	6	227	0.02	1900	50	3	.15	0.01	0.01
609131.6	4875713.2	7682	2.598348E-06	7.262301E-08	1	2	2	2	N	6	228	0.20	2100	50	3	.15	1	0.01
609131.6	4875713.2	7672	1.371418E-05	6.169884E-07	1	2	2	2	N	6	229	0.10	1900	10	5	.3	.5	0.01
609131.6	4875713.2	7662	5.278876E-06	2.341772E-07	1	2	2	2	N	6	230	0.04	1800	20	3	.2	0.01	0.01
609131.6	4875713.2	7652	1.922094E-06	5.17869E-08	1	2	2	2	N	6	231	0.08	2500	30	2	.15	.5	0.01
609131.6	4875713.2	7642	5.620655E-06	3.104219E-07	1	2	2	2	N	6	232	0.02	1400	150	3	.15	0.01	0.01
609131.6	4875713.2	7632	1.118044E-05	4.489709E-08	1	3	2	2	N	6	233	0.08	1300	15	3	.2	0.45	0.01
609131.6	4875713.2	7622	3.735133E-05	2.194389E-06	1	3	2	2	N	6	234	0.10	1200	150	3	.2	0.01	0.01
609131.6	4875713.2	7607	1.310283E-06	2.277339E-07	1	3	2	2	N	6	235	0.12	1400	100	3	.1	0.01	0.01
609131.6	4875713.2	7602	1.486677E-06	2.965645E-08	1	3	2	2	N	6	236	0.12	1300	50	3	.15	0.01	0.01
609131.6	4875713.2	7592	1.616841E-06	6.370206E-08	1	3	2	2	N	6	237	0.06	2000	5	3	.15	0.01	0.01
609131.6	4875713.2	7582	2.723037E-06	5.694221E-08	1	3	2	2	N	6	238	0.02	1800	70	3	.15	0.01	0.01
609131.6	4875713.2	7572	2.907159E-06	3.015366E-07	1	1	2	2	N	6	239	0.04	1500	50	3	.2	0.01	0.01
609131.6	4875713.2	7562	6.09004E-05	2.787752E-07	1	1	2	2	N	6	240	0.04	2100	70	3	.2	.5	0.01
609131.6	4875713.2	7552	1.997405E-05	2.285671E-07	1	1	2	2	N	6	241	0.04	1700	70	3	.3	.7	0.01
609131.6	4875713.2	7542	4.276365E-05	2.985815E-07	1	1	2	2	N	6	242	0.04	1300	0	3	.3	.5	0.01
609131.6	4875713.2	7532	2.871617E-06	9.206796E-08	1	1	2	2	N	6	243	0.04	1700	30	3	.2	1	0.01
609131.6	4875713.2	7522	2.057278E-06	6.583881E-08	1	1	2	2	N	6	244	0.04	670	10	3	.15	0.01	0.01
609131.6	4875713.2	7512	2.475179E-06	5.370773E-08	1	1	2	2	N	6	245	0.04	1400	100	3	.15	.5	0.01
609131.6	4875713.2	7502	2.517651E-06	9.485041E-08	1	1	2	2	N	6	246	0.04	740	15	2	.15	0.01	0.01
609131.6	4875713.2	7492	2.919009E-06	9.867625E-08	1	3	2	2	N	6	247	0.12	1300	30	3	.2	.5	0.01
609131.6	4875713.2	7482	1.905421E-06	7.660801E-08	1	3	2	2	N	6	248	0.06	1300	50	2	.15	0.01	0.01
609131.6	4875713.2	7472	1.814318E-06	9.234047E-08	1	3	2	2	N	6	249	0.04	540	30	2	.2	0.01	0.01
609131.6	4875713.2	7462	1.798962E-06	7.651631E-08	1	3	2	2	N	6	250	0.10	1200	30	3	.15	0.01	0.01
609131.6	4875713.2	7452	1.888304E-06	1.123945E-07	1	3	2	2	N	6	251	0.14	2000	5	3	.15	0.45	0.01
609131.6	4875713.2	7442	1.986708E-06	1.214705E-07	1	3	2	2	N	6	252	0.20	1500	7	3	.15	0.01	0.01
609131.6	4875713.2	7432	1.563664E-06	4.140984E-08	1	3	2	2	N	6	253	0.24	1700	5	3	.15	.5	0.01
609131.6	4875713.2	7422	1.815761E-06	4.00672E-07	1	3	2	2	N	6	254	0.04	770	150	3	.15	0.01	0.01
609131.6	4875713.2	7412	1.920394E-06	4.771438E-08	1	3	2	2	N	6	255	0.22	650	150	5	.15	0.01	0.01
609131.6	4875713.2	7402	2.856177E-06	3.249599E-07	1	3	2	2	N	6	256	0.22	880	15	3	.15	0.01	0.01

609131.6	4875713.2	7392	1.401013E-06	5.308972E-07	1	3	2	2	N	6	257	0.20	1200	70	3	.15	1.5	0.01
609131.6	4875713.2	7382	1.538936E-06	1.193876E-06	1	3	2	2	N	6	258	0.22	1600	100	3	.2	0.01	0.01
609131.6	4875713.2	7372	2.433283E-06	1.8193E-07	1	3	2	2	N	6	259	0.22	790	150	2	.2	0.01	0.01
609131.6	4875713.2	7362	1.823006E-06	1.259842E-07	1	3	2	2	N	6	260	0.26	550	200	3	.15	0.01	0.01
609131.6	4875713.2	7352	1.757088E-06	3.262702E-07	1	3	2	2	N	6	261	0.14	1300	50	3	.2	0.01	0.01
609131.6	4875713.2	7342	1.866177E-06	7.25827E-08	1	3	2	2	N	6	262	0.16	790	30	3	.2	0.01	0.01
609131.6	4875713.2	7332	3.565549E-06	7.248029E-08	1	3	2	2	N	6	263	0.16	1500	70	5	.15	0.01	0.01
609131.6	4875713.2	7322	1.907512E-06	5.198749E-08	1	3	2	2	N	6	264	0.06	1300	30	3	.2	0.01	0.01
609131.6	4875713.2	7312	2.701095E-06	1.08912E-07	1	3	2	2	N	6	265	0.06	1800	150	3	.2	0.01	0.01
609131.6	4875713.2	7302	2.502728E-06	3.104952E-08	1	3	2	2	N	6	266	0.18	1500	150	3	.15	0.01	0.01
609131.6	4875713.2	7292	2.968528E-06	4.029462E-07	1	3	2	2	N	6	267	0.02	1100	150	3	.2	0.01	0.01
609131.6	4875713.2	7282	1.810897E-06	2.473899E-07	1	2	2	3	N	6	268	0.24	1300	100	3	.15	0.01	0.01
609131.6	4875713.2	7272	2.920587E-06	2.526034E-07	1	2	2	3	N	6	269	0.08	1200	70	3	.2	0.01	0.01
609131.6	4875713.2	7262	2.567932E-06	1.818621E-07	1	2	2	3	N	6	270	0.02	1900	0	3	.15	0.01	0.01
609131.6	4875713.2	7252	6.297491E-06	1.508168E-07	1	2	2	3	N	6	271	0.06	1600	0	7	.15	0.01	0.01
609131.6	4875713.2	7242	1.350615E-04	1.737759E-07	1	2	2	3	N	6	272	0.06	300	0	2	.2	0.01	0.01
609131.6	4875713.2	7232	2.079562E-04	5.847638E-07	2	9	9	9	N	6	273	0.06	15	0	2	.2	0.01	0.01
609131.6	4875713.2	7222	1.839318E-04	1.054093E-06	2	9	9	9	N	6	274	0.06	10	0	3	.2	0.01	0.01
609131.6	4875713.2	7212	1.843342E-04	5.322865E-07	2	9	9	9	N	6	275	0.06	20	0	3	.3	0.01	0.01
609131.6	4875713.2	7202	2.967353E-06	2.85322E-07	2	9	9	9	N	6	276	0.24	1400	5	3	.15	0.01	0.01
609131.6	4875713.2	7192	1.529947E-06	2.673804E-08	1	2	2	3	N	6	277	0.22	1700	30	3	.2	0.01	0.01
609131.6	4875713.2	7182	1.515718E-06	1.460778E-07	1	2	2	3	N	6	278	0.10	860	15	3	.2	0.01	0.01
609131.6	4875713.2	7172	1.760674E-06	8.957234E-08	1	2	2	3	N	6	279	0.06	1800	10	2	.15	0.01	0.01
609131.6	4875713.2	7162	2.008876E-06	7.245393E-07	1	2	2	3	N	6	280	0.06	2100	70	3	.15	0.01	0.01
609131.6	4875713.2	7152	5.860984E-05	1.393876E-07	1	2	2	3	N	6	281	0.02	330	0	2	.2	0.01	0.01
609131.6	4875713.2	7142	4.728567E-06	9.358517E-08	2	9	9	9	N	6	282	0.18	550	30	3	.2	0.01	0.01
609131.6	4875713.2	7132	1.093931E-04	1.349358E-07	2	9	9	9	N	6	283	0.06	25	10	3	.2	0.01	0.01
609131.6	4875713.2	7122	2.157147E-04	5.662442E-07	2	9	9	9	N	6	284	0.08	10	0	2	.2	0.01	0.01
609131.6	4875713.2	7112	1.586294E-04	5.187659E-07	2	9	9	9	N	6	285	0.04	10	0	3	.2	0.01	0.01
609131.6	4875713.2	7102	1.789672E-05	1.435567E-07	2	9	9	9	N	6	286	0.40	85	15	3	.2	0.01	0.01
609131.6	4875713.2	7092	1.427713E-06	9.395733E-08	1	3	2	2	N	6	287	0.22	430	15	3	.15	0.01	0.015
609131.6	4875713.2	7082	1.945824E-06	4.291228E-08	1	3	2	2	N	6	288	0.18	350	15	3	.15	0.01	0.01
609131.6	4875713.2	7072	1.477248E-06	2.434704E-07	1	3	2	2	N	6	289	0.30	2600	70	3	.2	1	0.01
609131.6	4875713.2	7062	1.562221E-06	2.980176E-07	1	3	2	2	N	6	290	0.06	2300	200	2	.15	0.45	0.01
609131.6	4875713.2	7052	3.605042E-06	8.10995E-07	1	3	2	2	N	6	291	0.40	210	15	3	.15	0.01	0.01
609131.6	4875713.2	7042	2.449762E-06	6.171564E-07	1	3	2	2	N	6	292	0.16	570	300	2	.2	0.01	0.01
609131.6	4875713.2	7032	1.375679E-06	2.894879E-07	1	3	2	2	N	6	293	0.12	240	30	3	.15	0.01	0.01
609131.6	4875713.2	7022	3.579002E-06	1.551239E-07	1	3	2	2	N	6	294	0.14	580	70	2	.2	0.01	0.01
609131.6	4875713.2	7012	2.688539E-06	1.421785E-07	1	3	2	2	N	6	295	0.16	560	70	3	.2	0.01	0.01
609131.6	4875713.2	7002	3.261815E-06	2.377309E-07	1	3	2	2	N	6	296	0.14	1300	150	5	.15	1	0.01
609131.6	4875713.2	6992	2.227038E-06	8.279413E-08	1	3	2	2	N	6	297	0.20	760	700	3	.15	0.01	0.015
609131.6	4875713.2	6982	3.158798E-06	1.12375E-07	1	3	2	2	N	6	298	0.10	2000	30	3	.15	.5	0.015

609431.2	4875684.9	8246	2.383884E-06	1.863018E-07	1	2	1	1	N	7	134	0.14	50	15	3	.2	0.01	0.01
609431.2	4875684.9	8255	1.918604E-06	3.048632E-07	1	2	1	1	N	7	133	0.08	40	5	2	.2	0.01	0.01
609431.2	4875684.9	8236	2.650939E-06	7.229982E-08	1	2	1	1	N	7	135	0.06	65	5	3	.2	0.01	0.01
609431.2	4875684.9	8226	3.51146E-06	4.161512E-07	1	2	1	1	N	7	136	0.10	170	0	3	.15	0.01	0.01
609431.2	4875684.9	8216	3.236416E-06	7.516356E-08	1	2	1	1	N	7	137	0.02	110	0	3	.15	0.45	0.01
609431.2	4875684.9	8206	1.885427E-06	3.634185E-07	1	2	1	1	N	7	138	0.08	140	15	5	.2	0.01	0.01
609431.2	4875684.9	8196	3.43892E-07	3.662301E-06	1	2	1	1	N	7	139	0.08	50	15	3	.15	0.01	0.01
609431.2	4875684.9	8186	2.012146E-06	1.019782E-07	1	2	1	1	N	7	140	0.10	590	7	3	.2	0.01	0.01
609431.2	4875684.9	8176	1.832514E-06	5.231493E-08	1	2	1	1	N	7	141	0.06	180	70	7	.2	0.01	0.01
609431.2	4875684.9	8166	3.361411E-06	1.401633E-08	1	2	1	1	N	7	142	0.06	1900	0	7	.2	0.45	0.01
609431.2	4875684.9	8156	1.654511E-06	4.83823E-08	1	2	2	1	N	7	143	0.04	1200	0	5	.3	0.01	0.01
609431.2	4875684.9	8136	2.557486E-06	1.08049E-07	1	2	2	1	N	7	144	0.04	2200	0	3	.15	0.45	0.01
609431.2	4875684.9	8136	1.338835E-06	3.629053E-07	1	2	2	1	N	7	145	0.04	2200	0	3	.2	0.01	0.01
609431.2	4875684.9	8126	2.566479E-06	2.005049E-08	1	2	2	1	N	7	146	0.02	470	0	3	.15	0.01	0.01
609431.2	4875684.9	8106	6.299436E-06	2.357921E-08	1	2	2	1	N	7	148	0.06	480	5	3	.2	0.01	0.01
609431.2	4875684.9	8096	1.818591E-06	2.724062E-07	1	2	2	1	N	7	147	0.08	1000	30	3	.15	0.01	0.01
609431.2	4875684.9	8086	3.478184E-06	1.385818E-07	1	2	2	1	N	7	150	0.02	2200	10	10	.3	.7	0.01
609431.2	4875684.9	8076	1.928904E-05	2.26983E-07	1	2	2	1	N	7	151	0.02	1300	10	5	.3	.5	0.01
609431.2	4875684.9	8066	1.242489E-05	9.700072E-08	1	2	2	1	N	7	152	0.10	1800	5	5	.3	1	0.01
609431.2	4875684.9	8056	5.403628E-06	3.640506E-08	1	2	2	1	N	7	153	0.08	650	70	5	.2	.5	0.01
609431.2	4875684.9	8046	4.149156E-06	1.050827E-07	1	1	2	3	N	7	154	0.04	1900	70	5	.3	1.5	0.01
609431.2	4875684.9	8036	7.389111E-06	1.394934E-07	1	1	2	3	N	7	155	0.12	1900	20	5	.3	.7	0.01
609431.2	4875684.9	8026	9.038058E-06	4.91223E-08	1	1	2	3	N	7	156	0.04	1500	0	5	.2	0.45	0.01
609431.2	4875684.9	8016	1.540586E-05	4.930595E-07	1	1	2	3	N	7	157	0.08	1500	0	3	.15	0.45	0.01
609431.2	4875684.9	8006	1.681494E-05	8.819581E-08	1	1	2	3	N	7	158	0.02	1100	0	3	.3	0.01	0.01
609431.2	4875684.9	7996	9.713929E-06	6.85013E-08	1	1	2	3	N	7	159	0.04	1300	70	3	.3	.5	0.01
609431.2	4875684.9	7986	5.662223E-06	4.661267E-08	1	1	2	3	N	7	160	0.02	1400	15	5	.3	.5	0.01
609431.2	4875684.9	7976	5.164525E-06	3.451552E-08	1	3	2	2	N	7	161	0.02	730	15	5	.3	0.45	0.01
609431.2	4875684.9	7966	2.585759E-05	9.961234E-08	1	3	2	2	N	7	162	0.06	540	30	5	.3	0.01	0.01
609431.2	4875684.9	7956	3.09662E-05	9.439036E-08	1	3	2	2	N	7	163	0.10	400	5	5	.3	0.01	0.015
609431.2	4875684.9	7946	1.861642E-05	2.0805E-07	1	3	2	2	N	7	164	0.35	1900	5	3	.3	.7	0.015
609431.2	4875684.9	7936	2.145245E-05	2.762749E-08	1	3	2	2	N	7	165	0.06	700	70	5	.3	.5	0.01
609431.2	4875684.9	7926	1.938082E-05	2.169322E-07	1	3	2	2	N	7	166	0.06	1700	50	5	.3	.7	0.01
609431.2	4875684.9	7906	8.841212E-06	5.617381E-07	1	3	2	2	N	7	168	0.02	1200	30	3	.3	0.45	0.01
609431.2	4875684.9	7896	5.45635E-06	8.272798E-08	1	3	2	2	N	7	169	0.10	1100	10	3	.3	.5	0.01
609431.2	4875684.9	7886	1.388381E-05	1.79279E-07	1	3	2	2	N	7	170	0.02	1900	70	3	.3	1	0.01
609431.2	4875684.9	7876	2.077055E-05	9.290848E-08	1	3	2	3	N	7	171	0.06	580	20	5	.5	.5	0.01
609431.2	4875684.9	7866	2.061378E-05	1.11479E-07	1	3	2	3	N	7	172	0.10	1600	300	5	.3	1	0.01
609431.2	4875684.9	7856	1.374431E-05	9.907102E-08	1	3	2	3	N	7	173	0.06	1200	30	5	.5	.5	0.015
609431.2	4875684.9	7846	5.520152E-06	1.722695E-07	1	3	2	3	N	7	174	0.02	1200	15	5	.3	0.01	0.015
609431.2	4875684.9	7836	1.43494E-05	6.989264E-08	1	3	2	3	N	7	175	0.04	1600	15	3	.3	.5	0.01
609431.2	4875684.9	7826	5.309929E-06	1.035989E-07	1	3	2	3	N	7	176	0.02	5200	70	3	.3	2	0.01

609431.2 4875684.9 7816 1.37605E-05 1.096907E-07 1 3 2 3 N 7 177 0.10 1100 150 5 .3 0.45 0.01
609431.2 4875684.9 7806 2.594467E-05 1.046402E-07 1 3 2 3 N 7 178 0.10 540 30 3 .3 .5 0.01
609431.2 4875684.9 7796 8.785132E-05 8.560066E-08 1 3 2 3 N 7 179 0.02 1100 0 5 .5 0.45 0.01
609431.2 4875684.9 7786 1.679148E-05 1.513449E-07 1 3 2 3 N 7 180 0.04 390 15 7 .5 .5 0.01
609431.2 4875684.9 7776 9.537836E-05 1.753532E-06 1 3 2 3 N 7 181 0.45 420 30 7 .5 0.45 0.01
608759.4 4876317.2 6935.32 3.482323E-06 7.09498E-09 1 9 1 2 S 2 1 0.04 5000 200 2 .3 3 .04
608759.8 4876316.0 6931.08 3.815231E-06 2.224426E-08 1 9 1 2 S 2 2 0.15 1500 500 1 .15 1 .06
608760.1 4876315.0 6927.55 3.463284E-06 2.215042E-08 1 9 1 2 S 2 3 0.04 7000 200 3 .3 2 .02
608760.5 4876313.8 6923.66 3.578878E-06 9.786711E-08 1 9 1 2 S 2 4 0.06 5000 70 1.5 .3 1.5 .08
608760.8 4876312.8 6920.12 3.901289E-06 4.154276E-08 1 9 1 2 S 2 5 0.06 3000 70 1.5 .15 1 .06
608761.3 4876311.5 6915.53 2.385176E-06 1.609884E-08 1 9 1 2 S 2 6 0.05 5000 150 2 .3 1.5 .06
608761.8 4876310.0 6910.58 3.377607E-06 1.137218E-07 1 9 1 2 S 2 7 0.04 1500 100 1.5 .3 .7 .04
608762.0 4876309.2 6907.75 2.521927E-06 1.000989E-07 1 9 1 2 S 2 8 0.12 2000 200 1 .2 1 .06
608762.3 4876308.3 6904.57 2.013898E-06 5.640049E-08 1 9 1 2 S 2 9 0.15 2000 150 .7 .2 .7 .06
608762.8 4876306.9 6899.62 2.003202E-06 1.69764E-08 1 9 1 2 S 2 10 0.03 2000 70 .7 .3 .7 .04
608763.3 4876305.4 6894.67 1.601832E-06 8.310842E-09 1 9 1 2 S 2 11 0.15 1500 300 .7 .2 .7 .04
608763.7 4876304.2 6890.54 3.127375E-06 8.361951E-08 1 9 1 2 S 2 12 0.03 2000 300 1 .2 .7 .06
608763.7 4876304.2 6890.54 2.931795E-06 8.16658E-09 1 9 1 2 S 2 13 0.05 1500 500 .7 .2 .7 .04
608764.0 4876303.2 6886.82 4.380583E-06 3.598871E-08 1 9 1 2 S 2 14 0.20 3000 200 1.5 .3 1.5 .06
608764.3 4876302.2 6883.54 1.574412E-05 3.422576E-08 2 9 1 2 S 2 15 0.009 3000 150 2 .3 .7 .06
608764.7 4876301.1 6879.83 6.328835E-05 4.349479E-07 2 9 2 2 S 2 16 0.12 7 0 1.5 .15 0.01 .02
608765.0 4876300.2 6876.64 9.15017E-05 3.697541E-07 2 9 2 2 S 2 17 0.18 150 20 2 .3 0.01 0.015
608765.3 4876299.2 6873.29 3.212506E-06 1.765102E-08 1 9 2 2 S 2 18 0.06 5000 100 1 .2 1.5 .1
608765.7 4876298.1 6869.4 3.364639E-06 1.932202E-08 1 9 2 2 S 2 19 0.03 3000 300 2 .2 1.5 .06
608766.2 4876296.5 6863.92 4.350625E-06 5.961419E-08 1 9 2 2 S 2 20 0.03 3000 150 2 .3 2 .06
608766.7 4876294.9 6858.44 2.39611E-06 7.461691E-08 1 9 2 2 S 2 21 0.05 5000 500 7 .5 1 0.015
608767.1 4876293.7 6854.2 3.503945E-06 5.30711E-08 1 9 2 2 S 2 22 0.09 7000 1000 5 .3 1.5 .02
608767.8 4876291.5 6846.6 3.824071E-06 1.559547E-07 1 9 2 3 S 2 23 0.20 5000 300 1.5 .2 .7 .06
608768.8 4876288.6 6836.7 2.836292E-06 7.679043E-08 1 9 2 3 S 2 24 0.09 5000 500 1.5 .3 1 .04
608769.5 4876286.6 6829.63 3.808851E-06 1.529702E-08 1 9 2 3 S 2 25 0.03 3000 200 2 .3 1.5 .02
608769.8 4876285.5 6825.92 2.670416E-06 8.377595E-08 1 9 2 3 S 2 26 0.22 5000 500 1.5 .3 3 .1
608770.3 4876284.1 6821.14 3.56182E-06 2.595447E-08 1 9 2 3 S 2 27 0.16 2000 1000 1 .2 3 .06
608770.3 4876284.1 6821.14 2.288027E-06 3.631794E-08 1 9 2 3 S 2 28 0.12 2000 500 1 .2 1 .1
608770.7 4876282.9 6816.73 2.169873E-06 3.167725E-08 1 9 2 3 S 2 29 0.03 3000 200 1 .3 1 .04
608771.2 4876281.2 6810.89 2.319685E-06 4.369275E-08 1 9 2 3 S 2 30 0.10 2000 200 .7 .2 .7 .04
608772.6 4876277.0 6796.58 2.043266E-06 1.745135E-08 1 9 2 3 S 2 31 0.06 3000 500 3 .5 3 .04
608772.9 4876276.0 6793.04 1.807626E-06 4.930505E-08 1 9 2 3 S 2 32 0.13 3000 300 3 .3 1 .02
608773.3 4876275.0 6789.68 1.973257E-06 3.74784E-08 1 9 2 3 S 2 33 0.09 3000 200 3 .2 0.01 0.015
608773.3 4876275.0 6789.68 2.230514E-06 1.729131E-08 1 9 2 3 S 2 34 0.15 1500 150 1 .15 .7 .04
608773.8 4876273.4 6784.03 2.640885E-06 3.053037E-08 1 9 2 3 S 2 35 0.10 3000 300 2 .3 1 .04
608774.2 4876272.1 6779.43 4.767056E-06 3.017112E-08 1 9 2 3 S 2 36 0.05 3000 300 3 .3 .7 .04
608774.6 4876271.0 6775.9 2.394161E-06 8.966708E-09 1 9 2 2 S 2 37 0.03 1500 300 1 .2 .7 .04

608775.1 4876269.5 6770.59 2.234672E-06 2.758997E-08 1 9 2 2 S 2 38 0.06 2000 70 1 .3 1 .06
608775.7 4876267.7 6764.23 2.275719E-06 1.515625E-08 1 9 2 3 S 2 39 0.22 2000 200 2 .3 1 .06
608776.3 4876265.7 6757.34 2.280537E-06 3.430557E-08 1 9 2 2 S 2 40 0.05 2000 100 .7 .15 1 .04
608776.3 4876265.7 6757.34 1.791463E-06 1.421801E-07 1 9 2 2 S 2 41 0.10 2000 100 .7 .2 3 .06
608777.0 4876263.7 6750.62 2.744992E-06 6.450525E-10 1 9 2 2 S 2 42 0.24 700 50 2 .5 2 .04
608777.6 4876261.8 6744.08 2.100092E-06 9.137224E-08 1 9 2 2 S 2 43 0.05 2000 200 .7 .2 2 .04
608777.3 4876262.6 6746.87 1.772091E-06 8.860457E-08 1 9 2 2 S 2 44 0.05 3000 2999 .7 .2 1 .04
608778.2 4876259.9 6737.36 2.307555E-06 3.079611E-08 1 9 2 2 S 2 45 0.03 2000 70 .7 .15 2 .04
609349.4 4874520.6 6730.65 2.647474E-06 5.755908E-08 1 9 2 2 S 2 46 0.03 2000 300 1 .2 1 .04
608778.9 4876257.9 6730.65 4.332691E-06 1.060687E-07 1 9 2 2 S 2 47 0.13 1500 150 .7 .2 .5 0.015
608779.5 4876256.1 6724.29 1.976091E-06 1.618366E-08 1 9 2 2 S 2 48 0.03 1500 100 .5 .15 .7 .02
608779.5 4876256.1 6724.29 2.948884E-06 9.276717E-08 1 9 2 2 S 2 49 0.18 700 150 .5 .15 .5 .06
608780.1 4876254.1 6717.57 2.357056E-06 6.923813E-08 1 9 2 2 S 2 50 0.10 1500 200 .7 .2 .7 .02
608780.8 4876252.2 6710.68 3.016978E-06 1.014087E-07 1 9 2 2 S 2 51 0.009 1500 200 1.5 .5 1.5 .04
608781.4 4876250.2 6703.78 2.839758E-06 4.067638E-08 1 9 2 2 S 2 52 0.09 1500 200 .7 .2 .7 .02
608782.1 4876248.2 6697.07 3.38828E-06 2.508565E-08 1 9 2 2 S 2 53 0.10 1500 30 5 .3 .5 0.015
608783.3 4876244.4 6683.99 2.66708E-06 3.178441E-08 1 9 2 2 S 2 55 0.03 1500 150 .7 .2 .5 .04
608783.9 4876242.6 6677.62 1.714035E-06 2.311056E-07 1 9 2 2 S 2 56 0.009 700 200 .5 .15 .7 .04
608784.5 4876240.6 6670.91 2.358049E-06 6.899588E-08 1 9 2 2 S 2 57 0.26 3000 200 5 .3 0.45 .02
608785.2 4876238.7 6664.19 3.31092E-06 7.741448E-08 1 9 2 2 S 2 58 0.20 7000 150 1.5 .3 2 .06
608785.8 4876236.8 6657.83 1.987111E-06 1.736307E-07 2 9 2 2 S 2 59 0.40 1500 200 .7 .2 3 .06
608786.4 4876234.9 6651.11 3.641927E-06 4.283652E-08 2 9 2 2 S 2 60 0.04 2000 300 1 .3 2 0.015
608787.1 4876233.0 6644.39 2.90294E-06 1.790101E-08 2 9 2 3 S 2 61 0.03 2000 200 1 .2 1.5 .02
608787.7 4876231.1 6638.03 3.020745E-06 2.883917E-08 2 9 2 2 S 2 62 0.06 2000 200 .7 .15 .5 .04
608787.7 4876231.1 6638.03 2.987877E-06 3.405183E-08 2 9 2 2 S 2 63 0.04 3000 300 7 .2 2 .04
608788.2 4876229.4 6632.02 3.831155E-06 1.108149E-07 2 9 2 2 S 2 64 0.03 2000 300 .7 .15 .7 .04
608788.6 4876228.4 6628.66 1.768304E-06 5.854501E-08 2 9 2 2 S 2 65 0.03 1500 250 1.5 .2 .7 .06
608788.9 4876227.3 6624.95 4.376621E-06 2.013603E-07 2 9 2 2 S 2 66 0.13 1000 100 1 .3 .7 .04
608789.5 4876225.4 6618.41 5.012347E-06 2.177889E-08 1 9 2 2 S 2 67 0.03 1000 200 .5 .1 0.45 .06
608790.2 4876223.5 6611.87 2.849036E-06 3.124308E-08 1 9 2 2 S 2 68 0.03 2000 100 .7 .3 1 .04
608790.8 4876221.6 6605.16 2.716265E-06 2.641082E-08 1 9 2 3 S 2 69 0.05 3000 200 2 .3 1 .02
608791.5 4876219.6 6598.09 2.267002E-06 7.17953E-10 1 9 2 3 S 2 70 0.10 700 150 .5 .1 1.5 .04
608791.9 4876218.3 6593.84 1.256824E-06 7.114007E-08 1 9 2 3 S 2 71 0.03 1500 200 .7 .15 .5 .02
608643.3 4875922.9 7233.5 1.402846E-04 3.105246E-06 1 9 1 1 S 3 72 0.009 300 10 5 .3 0.45 .02
608643.3 4875922.9 7227.5 6.642169E-06 1.091127E-07 1 9 1 1 S 3 73 0.16 150 0 3 .3 .5 0.015
608643.3 4875922.9 7220.5 4.174033E-06 2.095078E-06 1 9 1 1 S 3 74 0.03 70 0 3 .2 .5 0.015
608643.3 4875922.9 7211 3.174531E-06 0 1 9 2 1 S 3 75 0.05 1000 0 3 .2 0.01 0.015
608643.3 4875922.9 7199.5 1.689961E-06 1.256059E-06 1 9 2 1 S 3 76 0.13 1000 15 7 .3 0.45 0.015
608643.3 4875922.9 7199.5 3.418445E-06 4.141726E-08 1 9 2 1 S 3 76 0.13 1000 15 7 .3 0.45 0.015
608643.3 4875922.9 7199.5 2.873302E-06 7.112203E-08 1 9 2 1 S 3 77 0.05 1000 0 2 .15 0.45 .02
608643.3 4875922.9 7189 4.24042E-06 3.854911E-07 1 9 2 1 S 3 78 0.10 500 7 7 .5 0.01 0.015
608643.3 4875922.9 7182.5 3.215092E-06 1.607555E-08 1 9 2 1 S 3 79 0.03 1500 10 10 .7 .5 .02

608643.3 4875922.9 7177.5 3.166575E-06 2.69466E-08 1 9 2 1 S 3 80 0.06 500 50 3 .2 0.01 .02
608643.3 4875922.9 7168 3.159088E-06 9.025621E-08 1 9 2 1 S 3 81 0.03 700 7 2 .15 0.45 0.015
608643.3 4875922.9 7159.25 3.53564E-06 4.132457E-08 1 9 2 3 S 3 82 0.13 1000 7 3 .3 2 .06
608643.3 4875922.9 7154.25 1.959528E-06 7.785752E-08 1 9 2 3 S 3 83 0.05 1000 20 5 .3 0.45 .02
608643.3 4875922.9 7141.5 1.977698E-06 2.639146E-08 2 9 2 3 S 3 84 0.09 300 15 1 .3 10 .04
608643.3 4875922.9 7120 3.272247E-06 5.316918E-08 2 9 2 2 S 3 85 0.06 700 10 1 .3 1.5 .04
608643.3 4875922.9 7106 5.198398E-06 8.35542E-08 2 9 2 2 S 3 86 0.09 1500 15 2 .3 1 .04
608643.3 4875922.9 7092.5 3.35578E-06 1.511648E-08 2 9 2 2 S 3 87 0.05 1500 50 3 .3 .5 0.015
608643.3 4875922.9 7080.5 3.062946E-06 7.23588E-09 2 9 2 2 S 3 88 0.12 1500 15 3 .2 .5 .04
608643.3 4875922.9 7070 3.627654E-06 7.181326E-08 2 9 2 2 S 3 89 0.03 1000 0 2 .2 .5 .02
608643.3 4875922.9 7070 5.423116E-07 4.101078E-06 2 9 2 2 S 3 89 0.03 1000 0 2 .2 .5 .02
608643.3 4875922.9 7063 2.362023E-06 1.033413E-07 2 9 2 2 S 3 90 0.06 300 20 3 .15 .5 .02
608643.3 4875922.9 7058 5.540206E-06 6.474535E-08 2 9 2 2 S 3 91 0.10 1500 10 1.5 .2 1 0.015
608643.3 4875922.9 7052 9.743894E-06 8.77369E-08 1 9 2 2 S 3 92 0.03 2000 5 7 .7 .7 .04
608643.3 4875922.9 7052 1.676127E-05 2.032617E-07 1 9 2 2 S 3 93 0.22 1500 7 7 .5 .5 0.015
608643.3 4875922.9 7042.75 3.222422E-06 8.559754E-10 1 9 2 2 S 3 94 0.10 700 5 3 .3 .5 .02
608643.3 4875922.9 7036.5 4.572165E-06 5.017854E-08 1 9 2 2 S 3 95 0.04 700 15 3 .2 0.45 .02
608643.3 4875922.9 7028.25 3.230725E-06 1.718536E-08 1 9 2 2 S 3 96 0.05 300 5 3 .15 0.45 0.015
608643.3 4875922.9 7020 3.262029E-06 8.612198E-10 1 9 2 2 S 3 97 0.10 1000 50 3 .3 .5 .02
608643.3 4875922.9 7015.5 4.07372E-06 5.388834E-08 1 9 2 2 S 3 98 0.10 2000 30 3 .3 .7 0.015
608643.3 4875922.9 7007 3.039527E-06 3.505492E-08 1 9 2 2 S 3 99 0.03 700 15 5 .3 0.45 .04
608643.3 4875922.9 6996 5.239344E-06 7.852029E-09 1 9 2 2 S 3 100 0.08 500 15 2 .2 0.45 0.015
608643.3 4875922.9 6990 2.270656E-06 1.59078E-08 1 9 2 2 S 3 101 0.09 300 0 3 .3 0.01 .02
608643.3 4875922.9 6987 3.53421E-06 1.293737E-07 1 9 2 2 S 3 102 0.13 700 10 3 .3 0.45 0.015
608643.3 4875922.9 6980.5 6.56688E-06 6.555202E-08 1 9 2 2 S 3 103 0.03 150 10 2 .1 0.01 0.015
608643.3 4875922.9 6980.5 4.169684E-06 1.090751E-07 1 9 2 2 S 3 104 0.09 300 10 3 .2 0.45 0.015
608643.3 4875922.9 6971.25 3.323508E-06 2.685833E-08 1 9 2 2 S 3 105 0.10 500 10 7 .3 .5 0.015
608643.3 4875922.9 6961.75 4.166471E-06 3.264937E-08 1 9 2 3 S 3 106 0.009 300 5 5 .3 0.45 0.015
608643.3 4875922.9 6952.5 4.706381E-06 4.571665E-08 1 9 2 3 S 3 107 0.05 700 20 3 .3 0.45 .02
608643.3 4875922.9 6943.5 2.703666E-06 9.952169E-08 1 9 2 3 S 3 108 0.009 300 5 3 .2 .5 .04
608643.3 4875922.9 6934 4.021902E-06 4.07123E-08 1 9 2 2 S 3 109 0.03 500 5 3 .15 0.45 .04
608643.3 4875922.9 6934 5.075604E-06 2.483394E-08 1 9 2 2 S 3 110 0.09 150 0 15 .05 0.01 .04
608643.3 4875922.9 6924.5 4.028237E-06 2.936386E-08 1 9 2 2 S 3 111 0.06 500 20 3 .15 .5 .02
608643.3 4875922.9 6915.25 3.157048E-06 2.014623E-08 1 9 2 2 S 3 112 0.05 500 73 .2 0.45 .02
608643.3 4875922.9 6906 4.175014E-06 6.68968E-08 1 9 2 2 S 3 113 0.03 700 0 3 .2 0.45 .02
608643.3 4875922.9 6896.75 6.779516E-06 3.733146E-08 1 9 2 2 S 3 114 0.24 1000 0 .5 .1 5 0.015
608643.3 4875922.9 6887 4.479785E-06 3.186698E-08 1 9 2 2 S 3 115 0.05 500 0 3 .2 .7 .02
608643.3 4875922.9 6877.5 3.994032E-06 5.580614E-08 1 9 2 2 S 3 116 0.04 300 5 3 .15 .5 .02
608643.3 4875922.9 6877.5 3.390996E-06 5.243828E-08 1 9 2 2 S 3 117 0.06 300 0 3 .1 .5 .02
608643.3 4875922.9 6868.25 6.657856E-06 1.955766E-07 1 9 2 2 S 3 118 0.09 300 70 3 .5 0.45 0.015
608643.3 4875922.9 6858.75 5.211211E-06 2.469824E-08 1 9 2 2 S 3 119 0.06 1000 10 5 .3 .5 0.015
608643.3 4875922.9 6849 4.809486E-06 4.531129E-08 1 9 2 2 S 3 120 0.03 300 15 2 .15 0.45 0.015

608643.3 4875922.9 6849 3.827673E-06 7.384905E-08 1 9 2 2 S 3 121 0.09 200 7 7 .3 0.01 0.015
608643.3 4875922.9 6839.5 5.624297E-06 2.833615E-08 1 9 2 3 S 3 122 0.06 700 30 5 .3 .5 .04
608643.3 4875922.9 6833 2.797726E-06 1.103052E-07 1 9 2 3 S 3 123 0.20 700 5 3 .3 7 .04
608643.3 4875922.9 6828 3.012634E-06 4.369243E-08 1 9 2 3 S 3 124 0.09 700 5 2 .15 0.45 .02
608643.3 4875922.9 6820.5 2.748828E-06 5.911337E-08 1 9 2 3 S 3 125 0.009 300 0 3 .2 0.01 .02
608643.3 4875922.9 6812.25 4.048813E-06 3.78898E-08 1 9 2 3 S 3 126 0.09 1000 15 2 .2 1 .02
608643.3 4875922.9 6802.75 5.102369E-06 1.498854E-08 1 9 2 3 S 3 127 0.05 700 30 .7 .2 1.5 .04
608643.3 4875922.9 6792.5 3.76463E-06 1.093213E-06 1 9 2 3 S 3 128 0.09 700 20 3 .2 .5 .04
608643.3 4875922.9 6792.5 4.524685E-06 4.188783E-08 1 9 2 3 S 3 128 0.09 700 20 3 .2 .5 .04
608643.3 4875922.9 6786 3.543796E-06 5.857331E-08 1 9 2 2 S 3 129 0.03 500 7 3 .2 0.45 .02
608643.3 4875922.9 6781 2.599096E-06 1.62264E-08 1 9 2 2 S 3 130 0.009 700 50 3 .2 .5 0.015
608643.3 4875922.9 6773.5 4.190059E-06 2.529214E-08 1 9 2 2 S 3 131 0.03 1000 5 3 .3 .7 0.015
608643.3 4875922.9 6764 4.635965E-06 6.35091E-08 1 9 2 2 S 3 132 0.24 1000 20 1.5 .3 10 .1
608643.3 4875922.9 6764 3.663735E-06 5.018774E-08 1 9 2 2 S 3 133 0.06 1000 30 5 .3 .5 0.015
608643.3 4875922.9 6754 5.522663E-06 8.726781E-09 1 9 2 2 S 3 134 0.10 1500 30 3 .15 .5 .04
608643.3 4875922.9 6744.5 3.978814E-06 5.652164E-08 1 9 2 2 S 3 135 0.10 1500 150 1 .3 1 .02
608643.3 4875922.9 6735.5 4.684251E-06 3.019086E-08 1 9 2 2 S 3 136 0.12 1000 100 3 .2 2 .04
608643.3 4875922.9 6735.5 4.053562E-06 4.907452E-08 1 9 2 2 S 3 137 0.03 1000 15 5 .3 0.45 0.015
608884.3 4875920.7 7379 4.425198E-06 8.441113E-09 1 9 1 2 S 4 138 0.06 200 300 1.5 .3 .7 .04
608884.3 4875920.7 7364 1.554605E-06 7.777491E-08 1 9 1 2 S 4 139 0.06 200 300 2 .3 1.5 .02
608884.3 4875920.7 7356.5 2.382199E-06 1.245394E-08 1 9 1 2 S 4 140 0.09 150 100 1.5 .3 1.5 .04
608884.3 4875920.7 7356.5 2.196927E-06 5.649254E-08 1 9 1 2 S 4 141 0.09 300 150 5 .3 .7 0.015
608884.3 4875920.7 7347 4.209445E-06 1.423673E-06 1 9 1 2 S 4 142 0.03 150 100 1 .2 1 .02
608884.3 4875920.7 7338 2.391363E-06 3.421106E-08 1 9 1 2 S 4 143 0.06 200 100 1.5 .15 .7 .04
608884.3 4875920.7 7330 1.407412E-06 1.052979E-07 1 9 1 2 S 4 144 0.06 200 100 .7 .1 1 .06
608884.3 4875920.7 7322 3.625482E-06 2.753889E-08 1 9 1 2 S 4 145 0.18 500 200 1 .2 1 .04
608884.3 4875920.7 7314 3.670378E-06 7.599738E-09 1 9 1 2 S 4 146 0.03 200 150 1.5 .15 .7 .06
608884.3 4875920.7 7307.5 3.181334E-06 2.333513E-08 1 9 1 2 S 4 147 0.009 700 500 3 .3 1.5 .02
608884.3 4875920.7 7303 1.910697E-06 7.835248E-09 2 9 1 2 S 4 148 0.03 2000 500 2 .3 1.5 .04
608884.3 4875920.7 7298.5 2.434381E-06 1.495344E-08 1 9 1 2 S 4 149 0.03 1500 500 3 .15 1 .06
608884.3 4875920.7 7292.5 1.831829E-06 2.158507E-08 1 9 1 2 S 4 150 0.05 5000 200 1 .2 1 .02
608884.3 4875920.7 7286.75 1.827695E-06 3.73027E-08 1 9 1 2 S 4 151 0.06 2000 150 1 .15 .7 .04
608884.3 4875920.7 7282.75 1.400616E-06 5.187269E-08 1 9 3 2 S 4 152 0.05 5000 300 2 .3 1 .02
608884.3 4875920.7 7279.25 2.146365E-06 7.534806E-09 1 9 3 2 S 4 153 0.04 7000 300 3 .15 0.45 .02
608884.3 4875920.7 7275.5 2.304236E-06 1.826529E-07 1 9 3 2 S 4 154 0.009 5000 500 2 .3 .7 .02
608884.3 4875920.7 7275.5 4.62255E-06 1.714154E-06 1 9 3 2 S 4 154 0.009 5000 500 2 .3 .7 .02
608884.3 4875920.7 7269.75 1.086811E-06 4.644663E-08 1 9 3 2 S 4 155 0.06 10000 200 3 .3 .7 .02
608884.3 4875920.7 7269.75 3.46978E-06 5.094072E-08 1 9 3 2 S 4 156 0.40 10000 300 2 .3 1 .04
608884.3 4875920.7 7265 1.149135E-06 2.621203E-08 1 9 3 2 S 4 157 0.10 5000 100 .5 .2 .7 .04
608884.3 4875920.7 7261 2.727703E-06 2.052536E-08 1 9 3 2 S 4 158 0.04 3000 500 1 .3 1 .04
608884.3 4875920.7 7255.5 1.104137E-06 1.672566E-08 1 9 3 2 S 4 159 0.06 5000 200 1 .2 .7 .04
608884.3 4875920.7 7248 2.046211E-06 1.261386E-07 1 9 3 2 S 4 160 0.03 3000 300 1.5 .2 1 .04

608884.3 4875920.7 7238.5 3.090254E-06 4.642183E-08 1 9 3 2 S 4 161 0.09 5000 150 2 .3 1.5 .04
608884.3 4875920.7 7229.75 3.15485E-06 7.089511E-09 1 9 3 2 S 4 162 0.09 5000 500 2 .3 1 .02
608884.3 4875920.7 7217.75 4.656885E-06 7.974516E-08 1 9 3 2 S 4 163 0.16 7000 150 1.5 .3 5 .04
608884.3 4875920.7 7206.5 2.249638E-06 2.892837E-08 1 9 3 2 S 4 164 0.04 3000 300 1 .2 .7 .04
608884.3 4875920.7 7198.5 2.847134E-06 2.612E-08 1 9 3 2 S 4 165 0.05 7000 500 3 .3 5 .06
608884.3 4875920.7 7198.5 4.267107E-06 3.20276E-08 1 9 3 2 S 4 166 0.04 5000 500 1.5 .3 2 .06
608884.3 4875920.7 7189 2.477173E-06 5.055495E-08 1 9 3 2 S 4 167 0.05 3000 300 1 .15 1.5 .06
608884.3 4875920.7 7179.5 4.266188E-06 6.453644E-08 1 9 3 2 S 4 168 0.03 5000 300 1.5 .3 1 .06
608884.3 4875920.7 7173.5 3.671354E-06 5.226568E-08 1 9 3 2 S 4 169 0.06 7000 300 1.5 .3 5 .02
608884.3 4875920.7 7169.5 2.966176E-06 1.332417E-08 1 9 3 2 S 4 170 0.26 3000 500 2 .2 .5 .02
608884.3 4875920.7 7163 2.311109E-06 3.289689E-08 1 9 3 2 S 4 171 0.13 10000 100 3 .3 1 0.015
608884.3 4875920.7 7155.25 2.481359E-06 7.73025E-09 1 9 3 2 S 4 172 0.03 2000 70 1 .15 1 .04
608884.3 4875920.7 7146.5 2.121858E-06 1.619719E-08 1 9 3 2 S 4 173 0.03 7000 100 1.5 .3 1 .04
608884.3 4875920.7 7139.75 2.408138E-06 9.327276E-09 1 9 3 2 S 4 174 0.20 2000 100 1.5 .15 1.5 .04
608884.3 4875920.7 7135.75 4.066527E-06 2.397352E-08 1 9 3 2 S 4 175 0.05 3000 200 1 .2 2 .02
608884.3 4875920.7 7135.75 2.414368E-06 3.308173E-08 1 9 3 2 S 4 176 0.06 3000 200 2 .2 1 .02
608884.3 4875920.7 7123.75 5.079734E-06 1.332184E-07 1 9 3 2 S 4 177 0.18 7000 200 .7 .2 .5 .04
608884.3 4875920.7 7108 1.699095E-05 1.330416E-07 1 9 3 2 S 4 178 0.04 10000 150 2 .2 3 .08
608884.3 4875920.7 7098 2.914388E-06 2.082641E-08 1 9 3 2 S 4 179 0.10 5000 150 1 .3 .7 .06
608884.3 4875920.7 7089.5 3.021421E-06 7.222036E-08 1 9 3 2 S 4 180 0.06 3000 150 1.5 .2 1 .04
608884.3 4875920.7 7080.25 2.696501E-06 8.638862E-08 1 9 3 2 S 4 181 0.09 3000 1000 1 .3 1 .02
608884.3 4875920.7 7070.25 2.337211E-06 1.335525E-08 1 9 2 2 S 4 182 0.06 2000 700 .7 .2 1 .02
608884.3 4875920.7 7058.5 2.308622E-06 3.345849E-08 1 9 2 2 S 4 183 0.03 1500 150 .5 .2 .7 .04
608884.3 4875920.7 7044 2.617929E-06 7.881657E-08 1 9 2 2 S 4 184 0.10 3000 1000 1 .3 2 .04
608884.3 4875920.7 7034 1.86418E-06 5.198439E-08 1 9 2 2 S 4 185 0.15 2000 700 2 .2 1.5 0.015
608884.3 4875920.7 7029.5 2.27596E-06 3.324117E-08 1 9 2 2 S 4 186 0.09 1500 700 1 .3 .7 .04
608884.3 4875920.7 7021 1.995399E-06 3.170702E-08 1 9 2 2 S 4 187 0.40 2000 150 1.5 .3 3 .02
608884.3 4875920.7 7021 4.15613E-06 3.31674E-08 1 9 2 2 S 4 188 0.15 3000 200 .7 .3 1 .04
608884.3 4875920.7 7009.75 2.709892E-06 3.737819E-08 1 9 2 2 S 4 189 0.10 2000 200 1.5 .2 .7 .04
608884.3 4875920.7 6995.25 4.093017E-06 4.724681E-08 1 9 2 2 S 4 190 0.10 3000 100 2 .2 1 .02
608884.3 4875920.7 6976.25 4.825792E-06 5.461121E-08 1 9 2 2 S 4 191 0.06 1500 300 1.5 .3 1.5 .02
608884.3 4875920.7 6964.75 1.216649E-06 2.442414E-08 3 9 2 3 S 4 192 0.05 150 200 .5 .3 0.45 .04
608884.3 4875920.7 6960 2.153803E-06 2.420006E-08 3 9 2 3 S 4 193 0.03 100 200 .5 .2 0.01 0.015
608884.3 4875920.7 6951.5 2.642671E-06 7.015258E-09 3 9 2 3 S 4 194 0.03 500 200 .7 .3 .5 .02
608884.3 4875920.7 6942.25 4.64258E-05 3.768328E-07 3 9 2 3 S 4 195 0.05 1000 100 2 .3 .5 .04
608884.3 4875920.7 6935.25 6.865335E-06 1.23237E-08 3 9 2 3 S 4 196 0.13 1500 200 1 .3 1 .04
608884.3 4875920.7 6928 7.123961E-06 3.45197E-08 3 9 2 3 S 4 197 0.26 1500 100 1.5 .3 .7 .04
608884.3 4875920.7 6928 8.512288E-06 3.318655E-08 3 9 2 3 S 4 198 0.05 1000 300 2 .3 .7 .02
608884.3 4875920.7 6920 4.663239E-06 7.259298E-08 3 9 2 3 S 4 199 0.04 700 70 1 .2 .7 .04
608884.3 4875920.7 6910 4.577076E-06 1.493078E-08 3 9 2 3 S 4 200 0.03 2000 200 2 .3 1 0.015
609074.7 4876313.7 7052 1.00352E-05 1.618628E-08 1 9 1 3 S 5 201 0.009 1500 100 1.5 .3 .7 .02
609074.7 4876313.7 7026.4 4.309038E-06 3.633249E-08 1 9 1 3 S 5 203 0.09 1500 200 1.5 .2 1.5 0.015

609074.7 4876313.7 7011.4 5.006339E-06 1.559912E-07 1 9 2 3 S 5 204 0.15 2000 70 1 .3 1.5 .08
609074.7 4876313.7 6999.4 3.281215E-06 7.798897E-08 1 9 2 3 S 5 205 0.09 1500 70 10 .5 1.5 .04
6987.7 4.201791E-0 6987.7 4.201791E-06 6.272694E-08 1 9 2 3 S 5 206 0.03 1500 70 1 .2 .7 .06
609074.7 4876313.7 6977 3.83975E-06 2.854133E-08 1 9 2 3 S 5 207 0.03 1500 150 1 .2 .5 .04
609074.7 4876313.7 6977 4.20187E-06 4.379148E-08 1 9 2 3 S 5 208 0.03 1500 300 1.5 .2 .7 .04
609074.7 4876313.7 6967 6.291383E-06 2.740645E-08 1 9 2 3 S 5 209 0.24 1500 200 2 .2 0.45 .02
609074.7 4876313.7 6957 4.374698E-06 7.414792E-08 1 9 2 3 S 5 210 0.05 1500 200 2 .2 1 .02
609074.7 4876313.7 6947.5 2.777891E-06 6.173104E-08 1 9 2 3 S 5 211 0.009 2000 200 1.5 .3 2 .02
609074.7 4876313.7 6938.5 5.179836E-05 4.211179E-07 1 9 2 3 S 5 212 0.09 5000 150 3 .3 3 .04
609074.7 4876313.7 6929.5 4.186466E-06 1.379777E-09 1 9 2 3 S 5 213 0.009 1500 200 .7 .2 1 .04
609074.7 4876313.7 6920 7.325371E-06 4.079209E-08 1 9 2 3 S 5 214 0.04 1500 200 .7 .2 .7 .06
609074.7 4876313.7 6910.2 1.329648E-05 3.522307E-08 1 9 2 3 S 5 215 0.05 1500 150 3 .3 .7 .02
609074.7 4876313.7 6897.2 4.947093E-06 4.440835E-08 1 9 2 3 S 5 216 0.05 700 150 .7 .1 1 .06
609074.7 4876313.7 6884 4.816823E-06 3.10696E-08 1 9 2 3 S 5 217 0.06 1500 100 1 .2 1 .06
609074.7 4876313.7 6874.5 3.945974E-06 1.695586E-08 1 9 2 3 S 5 218 0.04 1500 50 .7 .2 1 .02
609074.7 4876313.7 6865 6.103677E-06 3.325914E-08 1 9 2 3 S 5 219 0.18 1500 150 1.5 .3 .7 .04
609074.7 4876313.7 6865 4.133544E-06 6.937773E-08 1 9 2 3 S 5 220 0.04 1500 100 15 .3 .5 0.015
609074.7 4876313.7 6855.5 6.972989E-06 7.535971E-08 1 9 2 3 S 5 221 0.03 1000 100 1 .15 .7 .06
609074.7 4876313.7 6846 3.381822E-06 5.961152E-08 1 9 2 3 S 5 222 0.04 1500 700 2 .3 .7 .04
609074.7 4876313.7 6836.5 3.799236E-06 2.234824E-07 1 9 2 3 S 5 223 0.05 2000 200 1.5 .3 1 .06
609074.7 4876313.7 6827.5 4.96587E-06 2.4038E-08 1 9 2 3 S 5 224 0.04 3000 500 7 .2 .5 .04
609074.7 4876313.7 6818 6.456761E-06 1.209132E-07 1 9 2 3 S 5 225 0.09 2000 200 2 .2 3 .06
609074.7 4876313.7 6808.2 3.576429E-05 2.225787E-07 1 9 2 3 S 5 226 0.05 1500 200 5 .3 .7 0.015
609074.7 4876313.7 6798.7 2.00844E-05 2.65629E-07 1 9 2 3 S 5 227 0.13 1000 300 1 .2 .5 .08
609074.7 4876313.7 6789.2 4.636832E-06 6.677102E-08 1 9 2 3 S 5 228 0.05 1000 70 1 .2 .7 .04
609074.7 4876313.7 6779.7 9.703414E-06 6.137658E-07 1 9 2 3 S 5 229 0.03 1500 150 1 .2 .7 .02
609074.7 4876313.7 6770.2 1.47162E-05 5.542449E-08 1 9 2 3 S 5 230 0.10 1500 300 1 .3 .7 .06
609074.7 4876313.7 6770.2 1.868613E-05 2.580499E-07 1 9 2 3 S 5 231 0.13 3000 700 1.5 .3 1 .06
609074.7 4876313.7 6760.7 9.000616E-06 3.581817E-08 1 9 2 3 S 5 232 0.03 2000 50 .7 .2 .7 .04
609074.7 4876313.7 6751.5 7.320327E-05 4.29493E-07 1 9 2 3 S 5 233 0.04 1000 70 1.5 .3 1 .06
609074.7 4876313.7 6742.2 4.057629E-06 2.400975E-08 1 9 2 3 S 5 234 0.04 700 50 .7 .15 .5 .04
609074.7 4876313.7 6732.7 4.499864E-06 9.144965E-08 1 9 2 3 S 5 235 0.20 2000 100 1 .2 2 .06
609074.7 4876313.7 6723.2 3.961612E-06 1.468312E-07 1 9 2 1 S 5 236 0.03 1500 70 .7 .15 1 .2
609074.7 4876313.7 6713.7 9.391255E-06 1.532298E-08 1 9 2 3 S 5 237 0.30 500 50 .7 .1 .5 .04
609074.7 4876313.7 6704 5.19363E-06 7.519238E-07 1 9 2 3 S 5 238 0.15 1500 100 1.5 .3 .7 .06
609074.7 4876313.7 6719.2 9.488297E-06 6.476694E-08 1 9 2 3 S 5 239 0.05 1000 70 .7 .2 0.45 .02
609074.7 4876313.7 6684.7 4.944181E-06 2.115516E-07 4 9 2 1 S 5 240 0.03 1500 150 1.5 .2 .7 .04
609074.7 4876313.7 6675.2 1.368298E-05 1.34302E-07 4 9 2 1 S 5 241 0.06 1500 200 2 .3 2 .04
609074.7 4876313.7 6675.2 1.125255E-05 1.404378E-07 4 9 2 1 S 5 242 0.03 1000 100 1.5 .2 .7 0.015
609074.7 4876313.7 6665.7 8.078203E-05 1.887891E-06 4 9 2 1 S 5 243 0.22 7000 300 1 .2 2 .02
609074.7 4876313.7 6656.5 1.033979E-05 1.418266E-08 4 9 2 1 S 5 244 0.05 1000 100 1 .2 .5 .04
609074.7 4876313.7 6647 1.066422E-05 3.773322E-08 4 9 2 1 S 5 245 0.05 500 30 1 .2 .5 .02

609074.7 4876313.7 6637.2 1.6386E-05 2.373662E-07 4 9 2 1 S 5 246 0.06 700 100 1.5 .3 .7 .04
609074.7 4876313.7 6627.7 8.825458E-06 9.645373E-08 4 9 2 1 S 5 247 0.009 1000 200 1.5 .2 .5 0.015
609074.7 4876313.7 6627.7 7.357431E-06 5.748007E-08 4 9 2 1 S 5 248 0.03 1000 300 1.5 .3 .5 0.015
609074.7 4876313.7 6618.2 1.632977E-05 1.062751E-07 4 9 2 1 S 5 249 0.03 700 200 1 .3 .5 .04
609074.7 4876313.7 6608.7 4.289341E-06 5.392361E-08 4 9 2 1 S 5 250 0.18 300 300 .5 .15 0.01 .04
609074.7 4876313.7 6599 4.213873E-06 1.384286E-09 4 9 2 1 S 5 251 0.10 200 200 .7 .15 .5 .04
609074.7 4876313.7 6589 9.099018E-06 1.224431E-07 4 9 2 1 S 5 252 0.09 1500 300 1 .2 .7 .04
609074.7 4876313.7 6589 3.827727E-06 5.484129E-08 4 9 2 1 S 5 253 0.08 1500 100 1 .2 .5 .02
609074.7 4876313.7 6583 3.371867E-06 1.419543E-08 4 9 2 1 S 5 254 0.05 700 150 10 .2 1 .02
609428.3 4876540.0 7004.2 3.751164E-06 8.224395E-09 3 9 1 1 S 6 255 0.12 1000 70 2 .15 .7 .02
609428.3 4876540.0 6995.9 3.12268E-06 8.664212E-08 3 9 1 1 S 6 256 0.05 1500 70 3 .3 .7 .04
609428.3 4876540.0 6988.4 6.396368E-05 3.019934E-07 3 9 1 1 S 6 257 0.009 2000 30 3 .3 .7 .04
609428.3 4876540.0 6979.7 5.223223E-06 3.713372E-08 3 9 1 1 S 6 258 0.15 1000 20 2 .3 .7 .04
609428.3 4876540.0 6979.7 6.972076E-06 7.506284E-08 3 9 1 1 S 6 259 0.26 1500 30 5 .3 .7 0.015
609428.3 4876540.0 6970 4.654336E-06 7.634812E-09 3 9 1 1 S 6 260 0.06 700 200 3 .2 .5 .04
609428.3 4876540.0 6960.5 2.612092E-06 7.978261E-09 3 9 1 1 S 6 261 0.10 1500 30 3 .2 .5 .04
609428.3 4876540.0 6951.5 3.364006E-06 4.712324E-08 3 9 1 1 S 6 262 0.03 1500 300 5 .3 .7 .02
609428.3 4876540.0 6941 4.446045E-06 7.693993E-09 3 9 1 1 S 6 263 0.03 1000 30 3 .3 .5 .02
609428.3 4876540.0 6930.25 4.766397E-06 5.591706E-08 3 9 1 1 S 6 264 0.10 2000 70 1 .2 .7 .04
609428.3 4876540.0 6920.75 7.746652E-06 1.076947E-07 3 9 1 1 S 6 265 0.03 1500 50 3 .3 1.5 0.015
609428.3 4876540.0 6892.2 2.761416E-06 2.716138E-08 3 9 2 1 S 6 268 0.05 1000 100 3 .15 .7 .02
609428.3 4876540.0 6882.7 2.462617E-06 4.604314E-08 3 9 2 1 S 6 269 0.009 1500 150 1.5 .3 2 .04
609428.3 4876540.0 6873.25 3.939107E-06 4.955869E-08 3 9 2 1 S 6 270 0.009 1000 50 3 .2 1.5 .1
609428.3 4876540.0 6864 2.64993E-06 6.002561E-08 3 9 2 1 S 6 271 0.009 1000 20 3 .2 1.5 .04
609428.3 4876540.0 6864 2.829827E-06 2.462047E-08 3 9 2 1 S 6 272 0.10 1000 100 3 .2 2 .04
609428.3 4876540.0 6854.75 4.274357E-06 2.183927E-07 3 9 2 1 S 6 273 0.26 1500 50 3 .3 2 .06
609428.3 4876540.0 6845.25 5.287087E-06 5.754458E-08 3 9 2 1 S 6 274 0.09 1500 30 1.5 .3 1.5 .02
609428.3 4876540.0 6835.75 2.982922E-06 8.701413E-07 3 9 2 1 S 6 275 0.20 500 7 10 .05 5 .4
609428.3 4876540.0 6835.75 4.809494E-06 1.39976E-07 3 9 2 1 S 6 276 0.05 1000 30 5 .3 .5 0.015
609428.3 4876540.0 6826.25 5.411558E-06 3.134729E-08 3 9 2 1 S 6 277 0.03 1500 50 5 .3 1 .04
609428.3 4876540.0 6816.75 8.008273E-06 2.940669E-08 3 9 2 1 S 6 278 0.03 700 100 2 .15 .7 .02
609428.3 4876540.0 6807.35 6.70797E-06 7.042485E-08 3 9 2 1 S 6 279 0.06 1000 15 3 .2 .7 .02
609428.3 4876540.0 6797.85 6.468473E-06 5.467773E-08 3 9 2 1 S 6 280 0.009 1500 50 7 .3 1 0.015
609428.3 4876540.0 6788 5.222637E-06 4.1735E-08 3 9 2 1 S 6 281 0.03 1500 70 2 .2 1 .04
609428.3 4876540.0 6778 4.558384E-06 3.1255E-08 3 9 2 1 S 6 282 0.03 500 30 2 .15 .7 .02
609428.3 4876540.0 6768.2 8.139262E-06 8.643044E-08 3 9 2 1 S 6 283 0.06 2000 200 5 .3 1.5 .04
609428.3 4876540.0 6768.2 3.552822E-06 2.797515E-08 3 9 2 1 S 6 284 0.04 2000 500 5 .3 1 .02
609428.3 4876540.0 6758.7 4.592567E-06 3.257128E-08 3 9 2 1 S 6 285 0.03 2000 150 3 .3 1.5 .02
609428.3 4876540.0 6749.5 4.047327E-06 7.652043E-09 3 9 2 1 S 6 286 0.03 3000 100 2 .5 1.5 .04
609428.3 4876540.0 6740.25 6.610339E-06 8.682065E-09 3 9 2 1 S 6 287 0.03 2000 100 3 .3 1.5 .02
609428.3 4876540.0 6730.55 4.718179E-06 6.324528E-08 3 9 2 3 S 6 288 0.09 1500 150 3 .2 .7 .04
609428.3 4876540.0 6721.05 4.982712E-06 9.985342E-09 3 9 2 3 S 6 289 0.09 1000 200 2 .15 .7 .04

609428.3 4876540.0 6711.25 7.168276E-06 4.610293E-08 3 9 2 3 S 6 290 0.05 1500 20 2 .3 .7 .04
609428.3 4876540.0 6701.5 8.287876E-06 1.120276E-07 3 9 2 3 S 6 291 0.10 3000 300 5 .3 2 .02
609428.3 4876540.0 6701.5 6.162049E-06 1.493033E-08 3 9 2 3 S 6 292 0.06 5000 300 5 .3 .5 0.015
609428.3 4876540.0 6692 5.636196E-06 7.634146E-08 3 9 2 1 S 6 293 0.18 2000 150 10 .3 .7 0.015
609428.3 4876540.0 6682.25 3.151817E-06 1.866919E-08 3 9 2 1 S 6 294 0.06 1000 70 5 .15 1 .02
609428.3 4876540.0 6672.75 4.975151E-06 7.451894E-08 3 9 2 1 S 6 295 0.04 2000 200 7 .3 1 0.015
609428.3 4876540.0 6672.75 5.099324E-06 1.522795E-09 3 9 2 1 S 6 295 0.04 2000 200 7 .3 1 0.015
609428.3 4876540.0 6663.25 3.895263E-06 8.675215E-09 3 9 2 1 S 6 296 0.03 1500 150 3 .2 1 .04
609428.3 4876540.0 6654 8.589725E-06 4.665529E-08 3 9 2 3 S 6 297 0.03 2000 70 3 .3 1.5 .02
609428.3 4876540.0 6644.25 4.808293E-06 1.187219E-07 3 9 2 1 S 6 298 0.03 2000 50 1.5 .3 1 .02
609428.3 4876540.0 6644.25 4.345736E-06 3.511288E-08 3 9 2 1 S 6 299 0.15 2000 30 2 .2 1 .04
609428.3 4876540.0 6634.5 3.357443E-06 6.141681E-08 3 9 2 1 S 6 300 0.009 500 30 2 .1 .7 .02
609428.3 4876540.0 6625.5 4.901409E-06 6.917613E-08 3 9 2 1 S 6 301 0.05 2000 100 2 .3 .7 .06
609428.3 4876540.0 6616.25 5.762802E-06 5.145784E-08 3 9 2 1 S 6 302 0.09 2000 30 3 .2 1 .02
609428.3 4876540.0 6606.75 5.2846E-06 2.036378E-08 3 9 2 1 S 6 303 0.10 2000 70 3 .3 .7 0.015
609428.3 4876540.0 6597.15 3.583411E-06 3.395456E-08 3 9 2 1 S 6 304 0.03 1500 70 7 .3 .7 0.015
609428.3 4876540.0 6587.3 3.318563E-06 3.728746E-08 3 9 2 1 S 6 305 0.009 500 30 3 .15 .5 0.015
609428.3 4876540.0 6577.65 4.813225E-06 2.422914E-08 3 9 2 1 S 6 306 0.03 1500 150 3 .2 .7 .02
609428.3 4876540.0 6568.1 4.880166E-06 2.99392E-08 3 9 2 1 S 6 307 0.009 1500 15 2 .2 .7 .04
609428.3 4876540.0 6558.45 5.687632E-06 5.747535E-08 3 9 2 1 S 6 308 0.009 700 30 3 .3 .5 .02
609428.3 4876540.0 6558.45 6.883566E-06 5.106682E-08 3 9 2 1 S 6 309 0.06 1000 150 3 .3 1.5 .02
609428.3 4876540.0 6548.85 4.575738E-06 2.556289E-07 3 9 2 1 S 6 310 0.06 3000 50 7 .5 1.5 .02
609428.3 4876540.0 6539.15 5.320251E-06 4.857105E-08 3 9 2 1 S 6 311 0.03 1000 30 2 .2 .5 .02
609428.3 4876540.0 6529.4 7.093582E-06 6.134245E-08 3 9 2 1 S 6 312 0.03 2000 30 2 .3 .7 .04
609428.3 4876540.0 6519.75 5.322321E-06 6.356976E-08 3 9 2 1 S 6 313 0.05 1500 70 5 .3 .7 0.015
609428.3 4876540.0 6510.2 5.310051E-06 8.57997E-09 3 9 2 1 S 6 314 0.03 700 150 5 .2 .5 0.015
609428.3 4876540.0 6500.7 5.044605E-06 4.806724E-08 3 9 2 1 S 6 315 0.03 1500 30 3 .2 .7 0.015
609428.3 4876540.0 6491.2 3.112395E-06 2.060108E-08 3 9 2 1 S 6 316 0.04 1500 150 15 .3 0.01 .02
609428.3 4876540.0 6481.7 4.713905E-06 1.197094E-07 3 9 2 1 S 6 317 0.10 2000 10 5 .3 .7 .02
609428.3 4876540.0 6472 6.192023E-06 1.049959E-07 3 9 2 1 S 6 318 0.05 3000 100 3 .2 0.45 0.015
609428.3 4876540.0 6462 3.904938E-06 4.253752E-08 3 9 2 1 S 6 319 0.03 1000 0 3 .2 .5 0.015
609428.3 4876540.0 6452.5 4.060254E-06 3.109218E-08 3 9 2 1 S 6 320 0.10 500 20 3 .15 0.45 .02
609428.3 4876540.0 6443.2 4.799886E-06 3.462604E-08 3 9 2 1 S 6 321 0.05 500 50 5 .2 .5 0.015
609428.3 4876540.0 6433.2 2.888088E-06 1.719104E-08 3 9 2 1 S 6 322 0.06 300 15 3 .2 0.01 0.015
609428.3 4876540.0 6433.2 4.67561E-06 4.242383E-08 3 9 2 1 S 6 323 0.06 1000 20 5 .3 0.45 0.015
609428.3 4876540.0 6423.7 3.395677E-06 5.426708E-08 3 9 2 1 S 6 324 0.03 1000 20 2 .3 1.5 .02
609428.3 4876540.0 6414.7 4.263538E-06 1.39242E-09 3 9 2 1 S 6 325 0.18 700 15 5 .2 3 .5
609428.3 4876540.0 6405.5 6.602082E-06 7.197968E-08 3 9 2 1 S 6 326 0.10 700 20 3 .3 .7 0.015
609428.3 4876540.0 6396 5.390154E-06 2.033129E-08 3 9 2 1 S 6 327 0.05 300 15 2 .2 0.01 .02
609428.3 4876540.0 6386.35 4.803107E-06 8.456163E-08 3 9 2 1 S 6 328 0.10 300 20 2 .15 0.45 .02
609428.3 4876540.0 6376.85 1.095503E-05 6.813836E-08 3 9 2 1 S 6 329 0.13 1000 200 3 .3 5 .06
609428.3 4876540.0 6367 8.433451E-06 1.586727E-07 3 9 2 1 S 6 330 0.20 500 20 5 .3 .5 0.015

609428.3 4876540.0 6357.05 6.059397E-06 3.386906E-08 3 9 2 1 S 6 331 0.05 700 150 3 .3 .7 .04
609428.3 4876540.0 6357.05 3.849027E-06 4.891042E-08 3 9 2 1 S 6 332 0.05 1000 200 5 .3 1 0.015
609428.3 4876540.0 6347.3 3.43118E-06 5.601687E-08 3 9 2 1 S 6 333 0.03 1000 300 3 .15 .7 .02
609428.3 4876540.0 6337.45 3.797062E-06 1.563688E-08 3 9 2 1 S 6 334 0.06 1500 150 3 .2 .7 .02
609428.3 4876540.0 6327.9 5.277426E-06 7.03573E-08 3 9 2 1 S 6 335 0.04 1000 20 3 .2 1 .02
609428.3 4876540.0 6318.45 7.653297E-06 5.440755E-08 3 9 2 1 S 6 336 0.06 700 7 2 .3 3 .04
609428.3 4876540.0 6308.75 8.912037E-06 8.079864E-08 3 9 2 1 S 6 337 0.04 700 100 3 .3 .5 .04
609428.3 4876540.0 6299.25 1.029301E-05 1.249184E-07 3 9 2 1 S 6 338 0.15 300 200 2 .3 .5 .04
609428.3 4876540.0 6289.75 1.407069E-05 5.5334E-08 3 9 2 1 S 6 339 0.06 1000 100 5 .2 0.45 0.015
609428.3 4876540.0 6289.75 7.501965E-06 7.495731E-08 3 9 2 1 S 6 340 0.009 700 200 5 .3 1 .04
609428.3 4876540.0 6280 8.530753E-06 3.601897E-08 3 9 2 1 S 6 341 0.04 1000 30 3 .3 .7 .02
609428.3 4876540.0 6270.3 5.718E-06 1.616402E-08 3 9 2 1 S 6 342 0.09 300 7 2 .15 0.45 .2
609428.3 4876540.0 6260.8 5.384758E-06 1.837375E-07 3 9 2 1 S 6 343 0.03 1000 50 1.5 .3 2 .04
609428.3 4876540.0 6251.2 8.925937E-06 1.120316E-07 3 9 2 1 S 6 344 0.06 700 15 5 .3 .5 0.015
609428.3 4876540.0 6241.7 7.755151E-06 3.231344E-08 3 9 2 1 S 6 345 0.03 700 30 3 .2 1 .02
609428.3 4876540.0 6232 1.51948E-05 1.530198E-07 3 9 2 1 S 6 346 0.06 700 30 3 .2 5 .1
609428.3 4876540.0 6232 5.350356E-06 5.267657E-08 3 9 2 1 S 6 347 0.09 300 30 3 .15 .7 .04
609428.3 4876540.0 6222.4 7.343322E-06 4.6477E-08 3 9 2 1 S 6 348 0.03 200 30 3 .2 0.45 .02
609428.3 4876540.0 6212.9 7.426113E-06 3.836292E-08 3 9 2 1 S 6 349 0.06 1000 10 2 .15 0.45 .02
609428.3 4876540.0 6203 8.004907E-06 9.812786E-08 3 9 2 1 S 6 350 0.06 1500 20 3 .3 .5 0.015
609428.3 4876540.0 6203 6.372138E-06 8.694401E-08 3 9 2 1 S 6 351 0.04 2000 50 3 .2 0.45 0.015
609428.3 4876540.0 6195 4.377044E-06 8.926266E-08 3 9 2 1 S 6 352 0.05 1500 30 5 .3 .7 .02
609295.3 4876077.1 7337.5 5.057398E-06 4.596887E-08 1 9 3 3 S 7 353 0.03 5000 100 7 .3 .5 0.015
609295.3 4876077.1 7274 1.490149E-05 3.525884E-07 1 9 3 3 S 7 354 0.06 1500 70 1.5 .15 .7 .04
609295.3 4876077.1 7261.5 3.246827E-06 8.461191E-08 1 9 3 3 S 7 355 0.13 3000 150 1 .2 1 .04
609295.3 4876077.1 7256 5.374662E-06 2.125576E-07 1 9 3 3 S 7 356 0.06 5000 150 1 .2 .7 .1
609295.3 4876077.1 7247 2.594044E-06 5.420429E-08 1 9 3 3 S 7 357 0.09 1000 70 1 .15 .5 .06
609295.3 4876077.1 7237 2.570896E-06 7.208109E-08 1 9 3 3 S 7 358 0.03 1500 100 1 .15 .5 .04
609295.3 4876077.1 7237 4.136639E-06 1.138712E-07 1 9 3 3 S 7 359 0.05 5000 200 3 .3 1 .04
609295.3 4876077.1 7225.3 3.688698E-06 3.844547E-08 1 9 3 3 S 7 360 0.18 3000 200 1.5 .3 .7 .04
609295.3 4876077.1 7212.8 3.604862E-06 4.742954E-08 1 9 3 3 S 7 361 0.05 5000 300 5 .5 1 .06
609295.3 4876077.1 7201.5 3.829467E-06 2.643384E-08 1 9 2 3 S 7 362 0.06 2000 100 1 .3 .7 .06
609295.3 4876077.1 7189.75 4.270572E-06 5.600759E-08 1 9 2 3 S 7 363 0.03 3000 200 2 .3 1 .06
609295.3 4876077.1 7178.25 5.448802E-06 7.353766E-08 1 9 2 3 S 7 364 0.03 2000 200 1 .2 .7 .06
609295.3 4876077.1 7167.75 3.734857E-06 6.823662E-08 1 9 2 3 S 7 365 0.18 3000 200 1 .5 1 .02
609295.3 4876077.1 7157.75 4.340734E-06 6.014622E-08 1 9 2 3 S 7 366 0.09 1500 100 .7 .15 .5 .04
609295.3 4876077.1 7147.5 -2.074968E-08 2.934448E-08 1 9 2 3 S 7 367 0.40 3000 100 5 .3 1 0.015
609295.3 4876077.1 7147.5 3.581872E-06 4.574695E-08 1 9 2 3 S 7 368 0.009 3000 500 2 .3 1 .04
609295.3 4876077.1 7137 5.270561E-06 2.314982E-08 1 9 2 3 S 7 369 0.10 1500 70 .7 .15 .7 .04
609295.3 4876077.1 7127.25 4.041433E-06 1.804165E-08 1 9 2 3 S 7 370 0.12 1000 70 .7 .1 .7 .06
609295.3 4876077.1 7117.25 5.255256E-06 1.433363E-08 1 9 2 3 S 7 371 0.03 1500 50 1 .2 .5 .04
609295.3 4876077.1 7104.75 7.353925E-06 8.389572E-08 1 9 2 3 S 7 372 0.09 1500 70 1.5 .3 2 .02

609295.3 4876077.1 7091.5 2.920297E-06 8.505731E-08 1 9 2 3 S 7 373 0.06 700 50 .7 .15 .5 .04
609295.3 4876077.1 7080.25 5.269851E-06 9.039013E-09 1 9 2 3 S 7 374 0.18 1500 150 1 .15 1 .06
609295.3 4876077.1 7080.25 5.304739E-06 8.396046E-08 1 9 2 3 S 7 375 0.03 2000 300 2 .2 1 .04
609295.3 4876077.1 7069 5.653297E-06 8.110784E-08 1 9 2 3 S 7 376 0.03 1500 70 2 .2 2 .04
609295.3 4876077.1 7056.5 3.691508E-06 4.466502E-08 1 9 2 3 S 7 377 0.05 1500 100 .7 .2 .5 .04
609295.3 4876077.1 7056.5 4.464056E-06 4.464073E-08 1 9 2 3 S 7 377 0.05 1500 100 .7 .2 .5 .04
609295.3 4876077.1 7044.75 2.599294E-06 1.577199E-08 1 9 2 3 S 7 378 0.10 2000 100 .7 .2 .7 .06
609295.3 4876077.1 7044.75 2.914363E-06 1.573288E-08 1 9 2 3 S 7 378 0.10 2000 100 .7 .2 .7 .06
609295.3 4876077.1 7035.5 3.31351E-06 1.606359E-08 1 9 2 3 S 7 379 0.45 2000 100 1 .3 1 .04
609295.3 4876077.1 7027 2.995929E-06 2.607781E-08 1 9 2 3 S 7 380 0.04 5000 150 1.5 .3 2 .06
609295.3 4876077.1 7019 3.946035E-06 3.208152E-08 1 9 2 3 S 7 381 0.12 5000 200 2 .3 3 .1
609295.3 4876077.1 7010.75 3.404933E-06 3.565356E-08 1 9 2 3 S 7 382 0.15 1500 100 1 .15 .7 .06
609295.3 4876077.1 7001 4.017766E-06 6.783816E-08 1 9 2 3 S 7 383 0.09 2000 150 1 .3 1 .06
609295.3 4876077.1 6992 4.157627E-06 5.618404E-08 1 9 2 3 S 7 384 0.03 2000 200 2 .2 1 .04
609295.3 4876077.1 6992 3.239482E-06 2.880818E-08 1 9 2 3 S 7 385 0.12 3000 300 1.5 .3 1 .04
609295.3 4876077.1 6983 3.756402E-06 2.425258E-08 1 9 2 3 S 7 386 0.20 1500 150 .7 .15 1 .02
609295.3 4876077.1 6964.75 6.748969E-06 6.971979E-08 1 9 2 3 S 7 388 0.15 5000 200 2 .5 3 .06
609295.3 4876077.1 6956.75 5.399736E-06 2.945684E-07 1 9 2 3 S 7 389 0.009 3000 300 10 .5 .5 0.015
609295.3 4876077.1 6939 4.783252E-06 8.664069E-08 1 9 2 3 S 7 391 0.009 3000 200 1.5 .2 1.5 .04
609295.3 4876077.1 6929.5 4.328567E-06 4.084853E-08 1 9 2 3 S 7 392 0.03 3000 150 2 .2 2 .08
609295.3 4876077.1 6929.5 4.393393E-06 4.65725E-08 1 9 2 3 S 7 393 0.10 1500 200 1 .15 1 .04
609295.3 4876077.1 6919.5 5.083341E-06 1.016567E-07 1 9 2 3 S 7 394 0.03 3000 300 2 .3 1 0.015
609295.3 4876077.1 6909.5 4.792549E-06 1.479157E-08 1 9 2 3 S 7 395 0.05 3000 150 2 .3 .7 .06
609295.3 4876077.1 6899.75 5.135354E-06 5.902712E-08 1 9 2 3 S 7 396 0.009 1500 150 1 .3 1 0.015
609295.3 4876077.1 6899.75 2.92589E-06 8.583167E-08 1 9 2 3 S 7 397 0.03 2000 200 3 .5 3 .02
609295.3 4876077.1 6892.25 3.596043E-06 7.208568E-08 1 9 2 3 S 7 398 0.15 2000 200 1 .3 1 .04
608934.2 4876119.0 7141 4.445233E-04 6.220071E-07 1 9 1 1 S 8 399 0.03 1500 5 3 .2 .7 .04
608934.2 4876119.0 7132 3.609487E-04 2.515117E-06 1 9 2 3 S 8 400 0.03 1000 15 3 .3 .5 .06
608934.2 4876119.0 7132 4.092166E-04 2.505406E-06 1 9 2 3 S 8 401 0.09 500 50 3 .3 .5 .06
608934.2 4876119.0 7122.75 4.576632E-04 1.043974E-06 1 9 2 3 S 8 402 0.15 300 5 5 .3 1 .04
608934.2 4876119.0 7113.75 4.14044E-04 5.791675E-06 1 9 2 3 S 8 403 0.06 700 15 2 .3 .5 0.015
608934.2 4876119.0 7104 3.386388E-04 9.494543E-07 1 9 2 3 S 8 404 0.04 500 5 2 .15 0.45 .04
608934.2 4876119.0 7094.5 4.54529E-04 8.724292E-07 1 9 2 3 S 8 405 0.05 150 10 7 .3 1 .02
608934.2 4876119.0 7084.5 3.981681E-04 1.274412E-06 1 9 2 3 S 8 406 0.03 200 30 3 .3 0.45 .04
608934.2 4876119.0 7084.5 4.070272E-04 3.909025E-06 1 9 2 3 S 8 407 0.20 200 5 2 .2 1 .02
608934.2 4876119.0 7075.25 3.181813E-04 8.029555E-07 1 9 2 3 S 8 408 0.04 150 15 2 .2 0.45 .04
608934.2 4876119.0 7066.75 3.819327E-04 1.128257E-06 1 9 2 3 S 8 409 0.009 150 20 2 .2 .5 .02
608934.2 4876119.0 7057.5 3.586235E-04 3.997256E-06 1 9 2 3 S 8 410 0.06 100 15 1.5 .3 0.01 .04
608934.2 4876119.0 7048 3.787692E-04 1.667913E-06 1 9 2 3 S 8 411 0.03 70 15 2 .3 0.01 0.015
608934.2 4876119.0 7048 4.479167E-04 2.078563E-06 1 9 2 3 S 8 412 0.10 100 10 2 .3 0.01 .04
608934.2 4876119.0 7041.5 4.782695E-04 1.726619E-06 1 9 2 3 S 8 413 0.06 100 15 2 .3 .5 0.015