

Beryllium

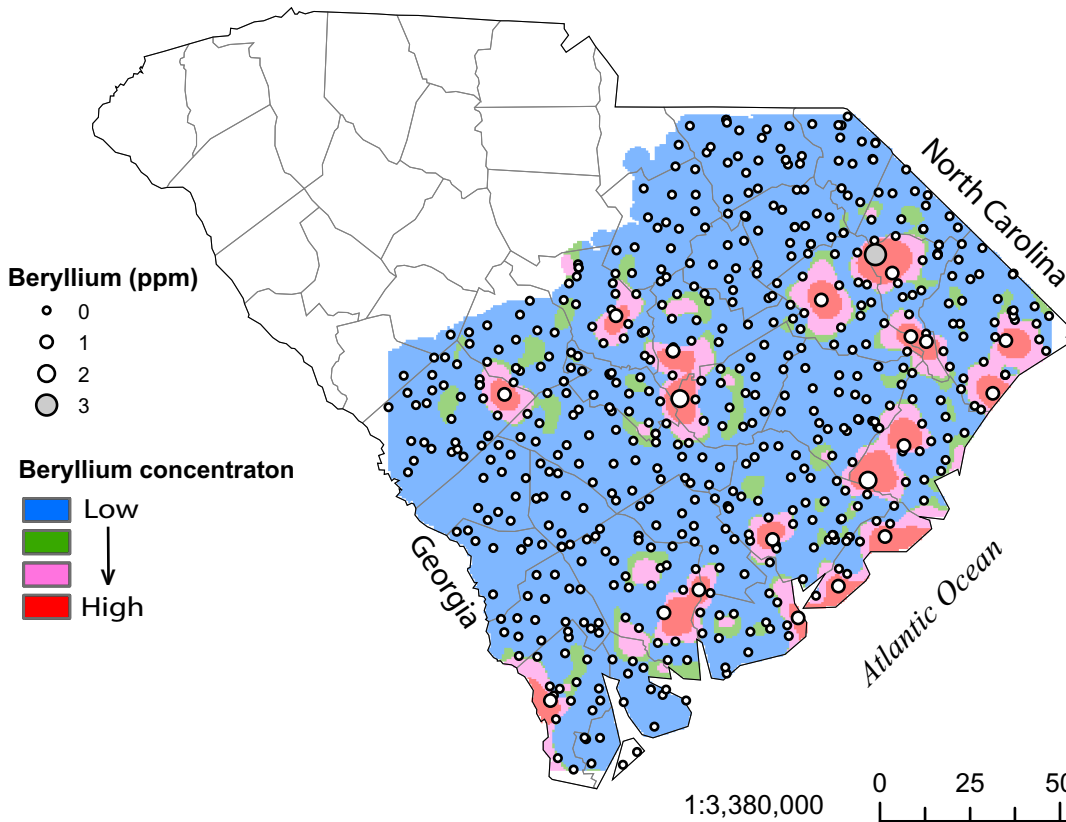
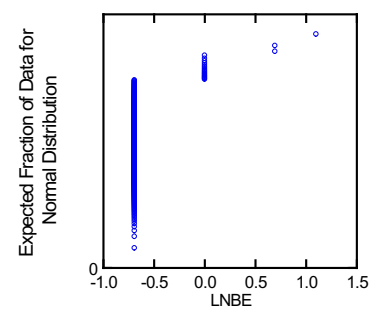
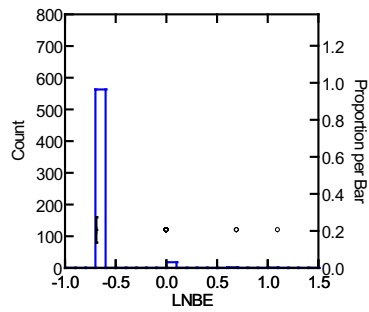
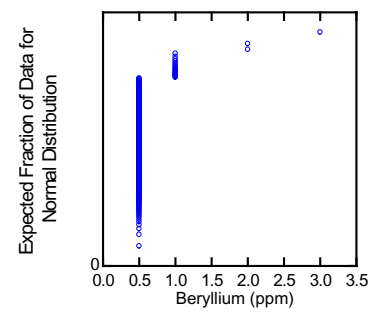
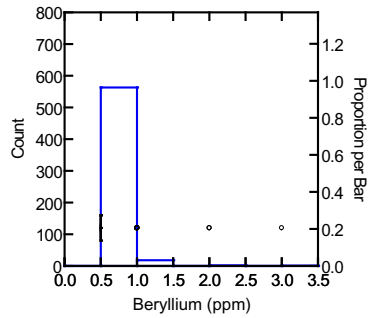
Detection minimum: 1.0 mg/kg
 Default value : 0.5 mg/kg

Soil Samples

Crustal abundance: 2.8 mg/kg
 Granite-granodiorite abundance: 5 mg/kg

Be

	Be	LnBe
N of cases	584	584
Minimum	0.500	-0.693
Maximum	3.000	1.099
Median	0.500	-0.693
Mean	0.525	-0.664
Standard Dev	0.160	0.161
Variance	0.026	0.026
Samples set to default value:	563	



Soil samples were only taken in the Atlantic Coastal Plain