

Calcium

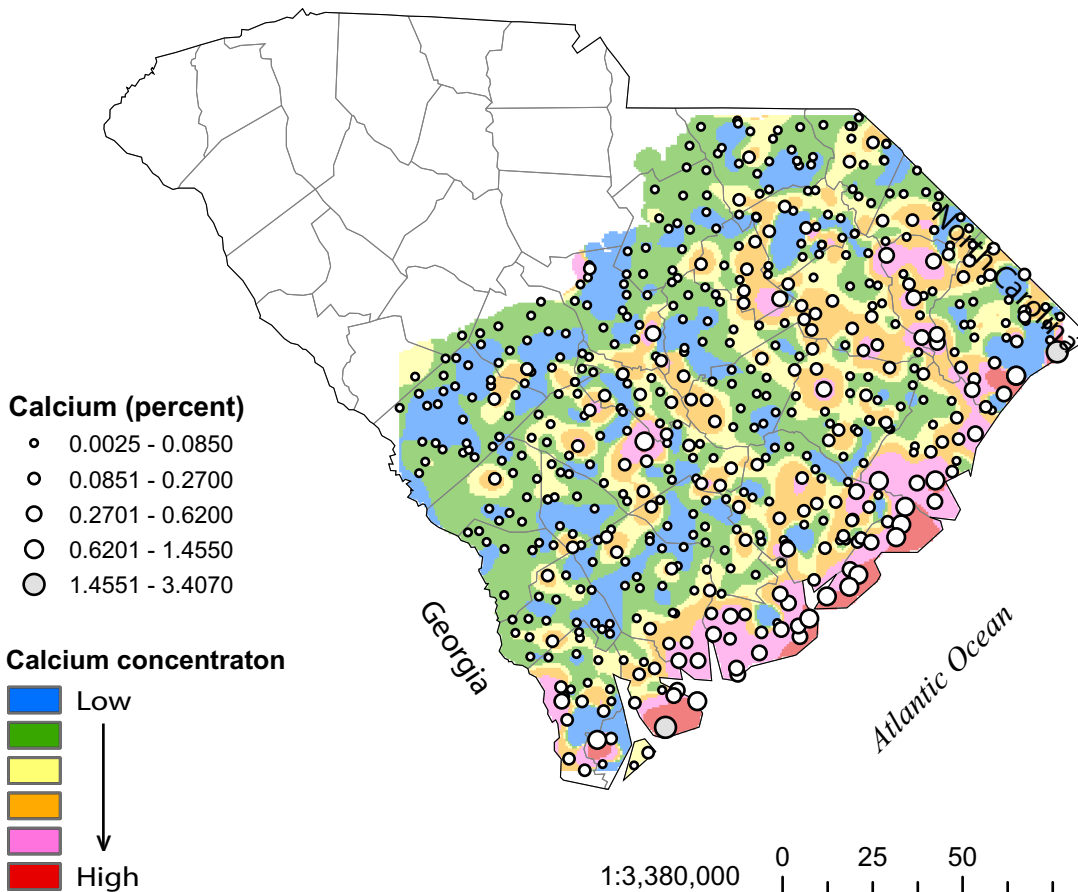
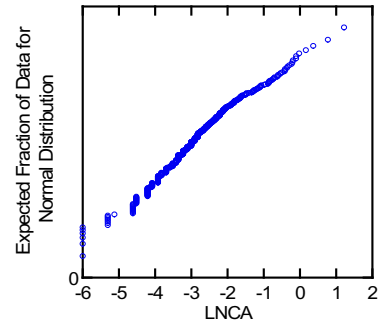
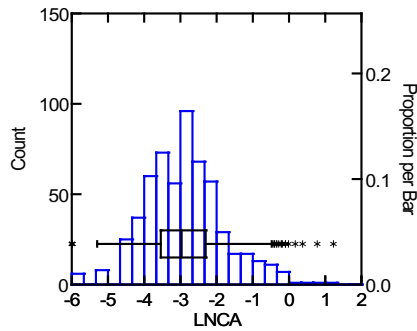
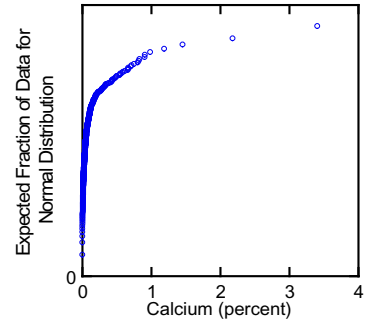
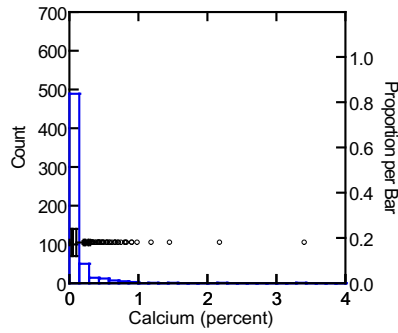
Detection minimum: 0.005 percent
 Default value : 0.0025 percent

Soil Samples

Crustal abundance: 41,500 mg/kg
 Granite-granodiorite abundance: 9,000 mg/kg

Ca

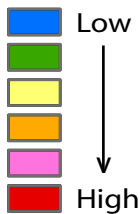
	Ca	LnCa
N of cases	584	584
Minimum	0.0025	-5.991
Maximum	3.407	1.226
Median	0.052	-2.967
Mean	0.111	-2.891
Standard Dev	0.225	1.085
Variance	0.051	1.176
Samples set to default value: 6		



Calcium (percent)

- 0.0025 - 0.0850
- 0.0851 - 0.2700
- 0.2701 - 0.6200
- 0.6201 - 1.4550
- 1.4551 - 3.4070

Calcium concentraton



Soil samples were only taken in the Atlantic Coastal Plain

