

Europium

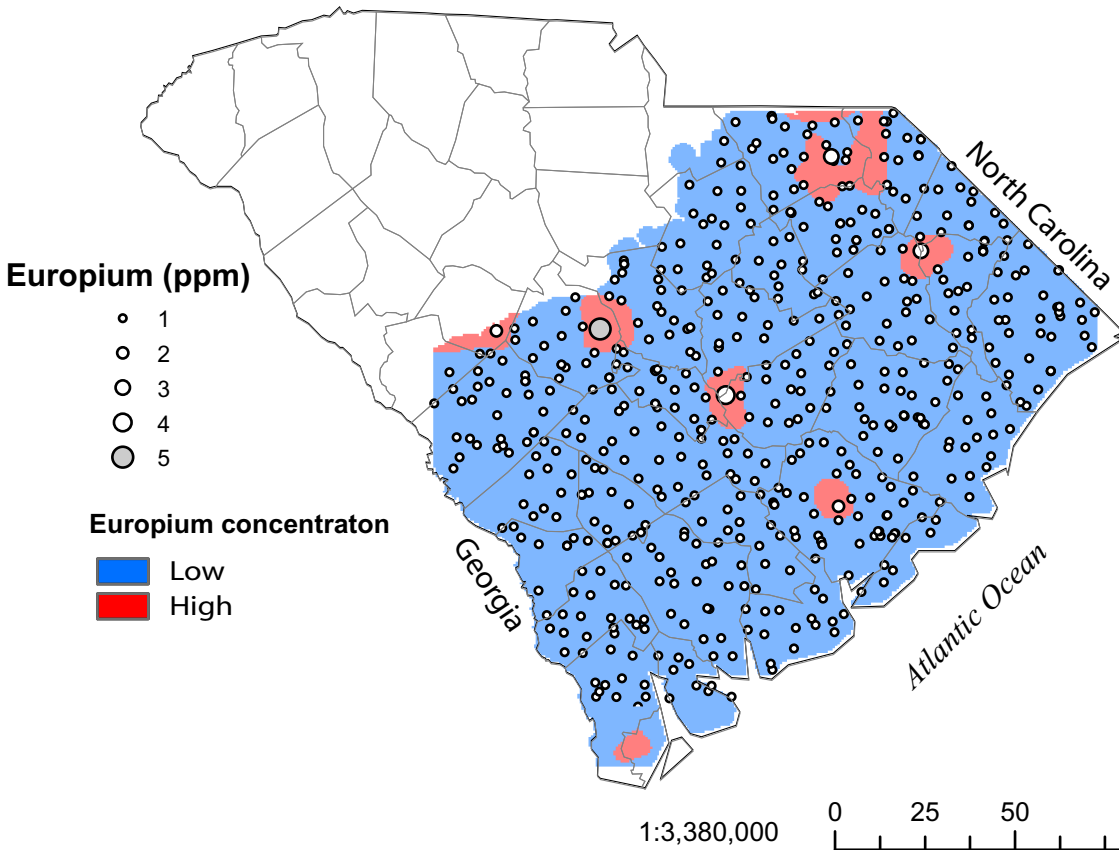
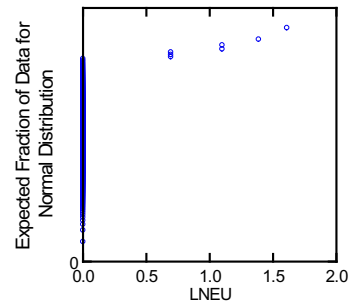
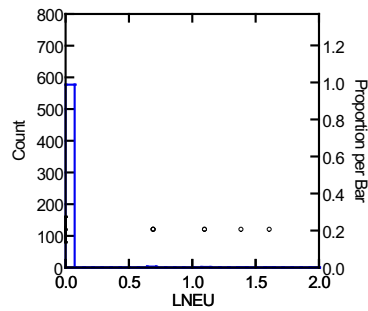
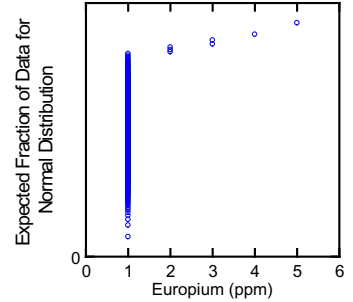
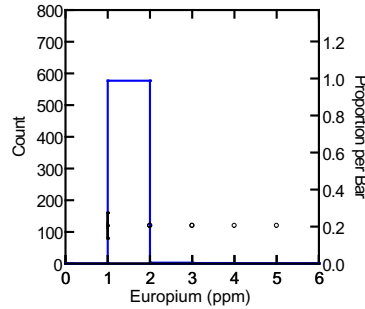
Detection minimum: 2.0 mg/kg
 Default value : 1.0 mg/kg

Soil Samples

Crustal abundance: 2.0 mg/kg
 Granite-granodiorite abundance: n.a.

Eu

	Eu	LnEu
N of cases	584	584
Minimum	1.000	0.000
Maximum	5.000	1.609
Median	1.000	0.000
Mean	1.024	0.012
Standard Dev	0.247	0.119
Variance	0.061	0.014
Samples set to default value: 577		



Soil samples were only taken in the Atlantic Coastal Plain