

# Gallium

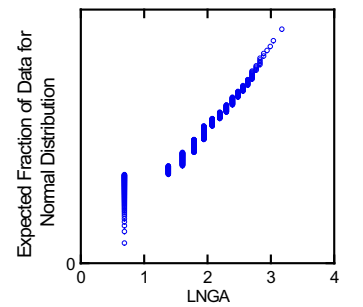
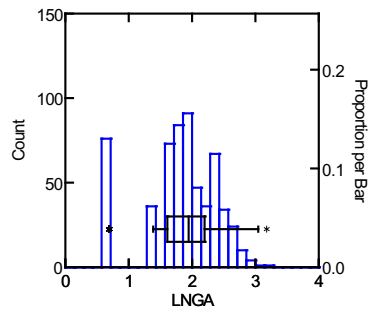
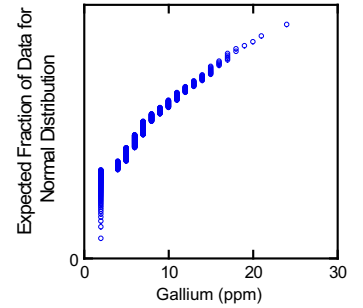
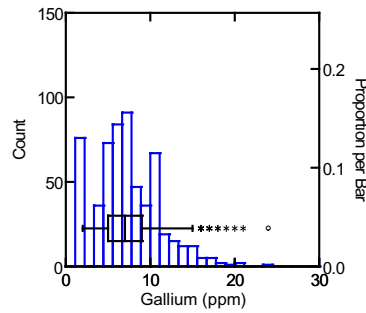
Detection minimum: 4.0 mg/kg  
 Default value : 2.0 mg/kg

# Soil Samples

Crustal abundance: 19 mg/kg  
 Granite-granodiorite abundance: n.a.

# Ga

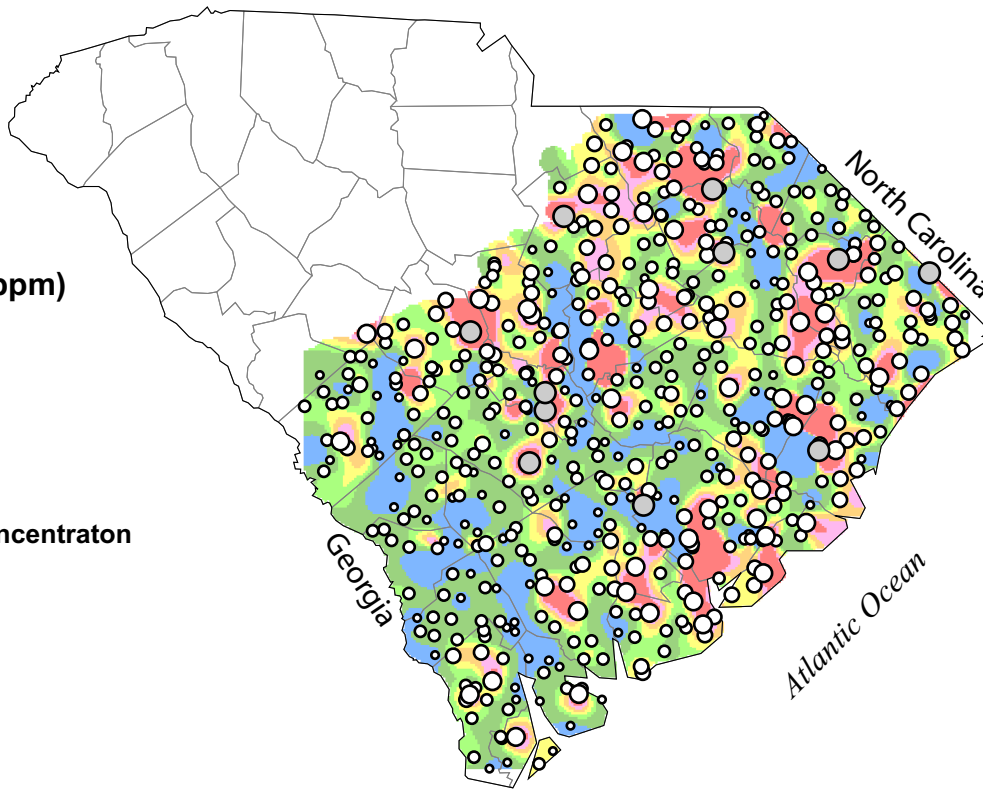
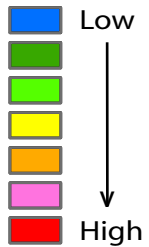
	Ga	LnGa
N of cases	584	584
Minimum	2.000	0.693
Maximum	24.000	3.178
Median	7.000	1.946
Mean	7.293	1.845
Standard Dev	3.676	0.566
Variance	13.511	0.321
Samples set to default value:	76	



## Gallium (ppm)

- 2 - 4
- 5 - 8
- 9 - 12
- 13 - 16
- 17 - 24

## Gallium concentraton



Soil samples were only taken in the Atlantic Coastal Plain

1:3,380,000 0 25 50 100 Miles