

# Holmium

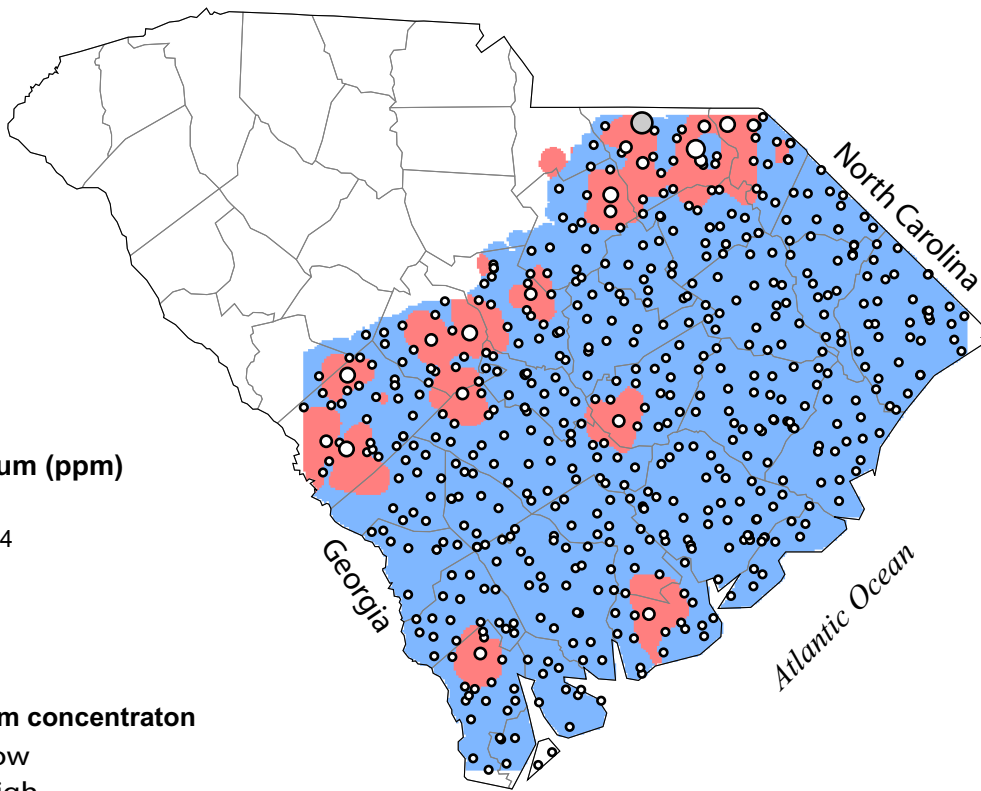
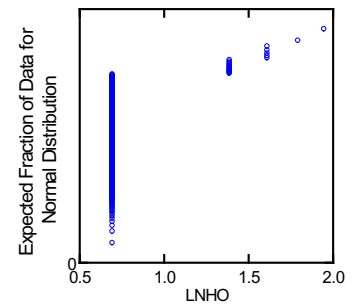
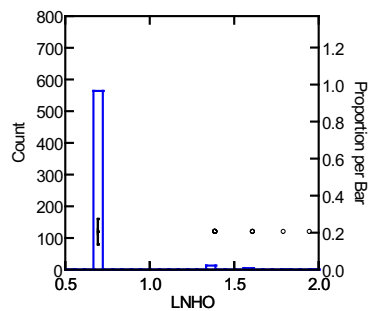
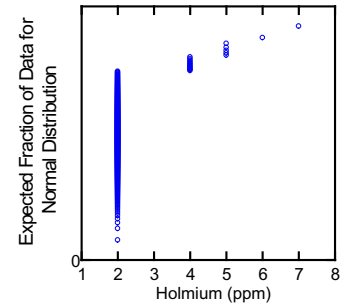
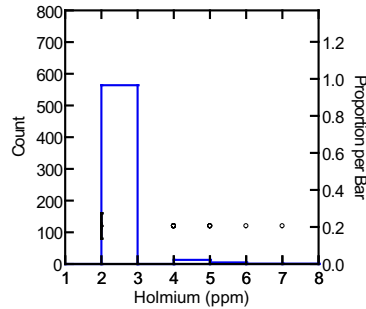
Detection minimum: 4.0 mg/kg  
 Default value : 2.0 mg/kg

# Soil Samples

Crustal abundance: 1.3 mg/kg  
 Granite-granodiorite abundance: n.a.

# Ho

	Ho	LnHo
N of cases	584	584
Minimum	2.000	0.693
Maximum	7.000	1.946
Median	2.000	0.693
Mean	2.086	0.720
Standard Dev	0.479	0.148
Variance	0.229	0.022
Samples set to default value: 564		



Soil samples were only taken in the Atlantic Coastal Plain

### Holmium (ppm)

- 2
- 3-4
- 5
- 6
- 7

### Holmium concentraton

- Low
- High

1:3,380,000 0 25 50 100 Miles