

# Molybdenum

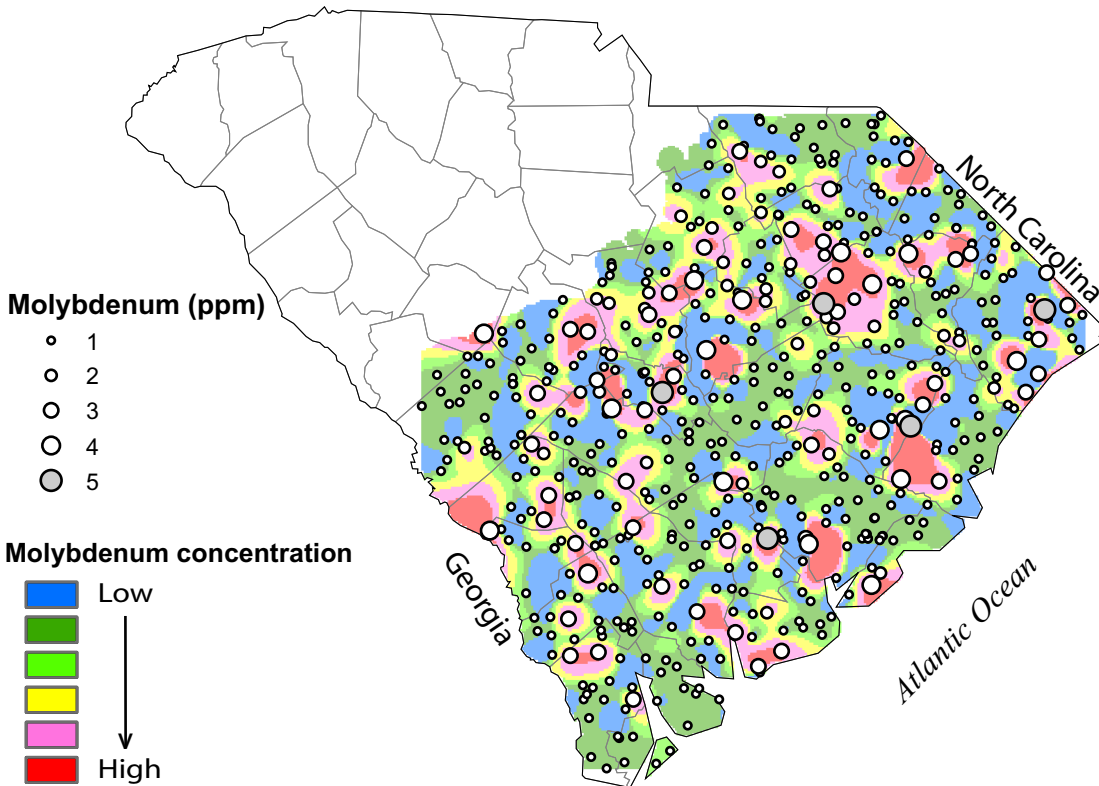
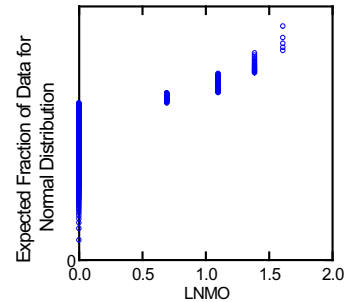
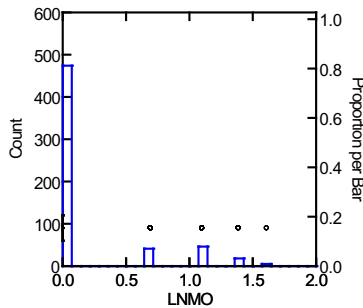
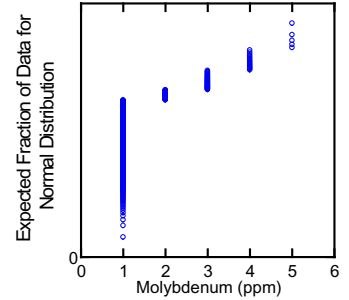
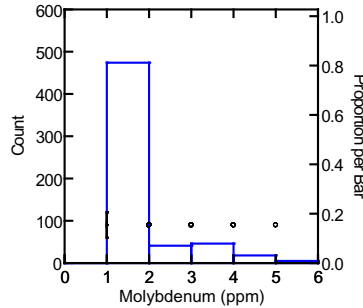
# Soil Samples

# Mo

Detection minimum: 2.0 mg/kg  
 Default value : 1.0 mg/kg

Crustal abundance: 1.2 mg/kg  
 Granite-granodiorite abundance: 1.5 mg/kg

	Mo	LnMo
N of cases	584	584
Minimum	1.000	0.000
Maximum	5.000	1.609
Median	1.000	0.000
Mean	1.354	0.192
Standard Dev	0.822	0.417
Variance	0.675	0.174
Samples set to default value:	474	



Soil samples were only taken in the Atlantic Coastal Plain

1:3,380,000 0 25 50 100 Miles