

Selenium

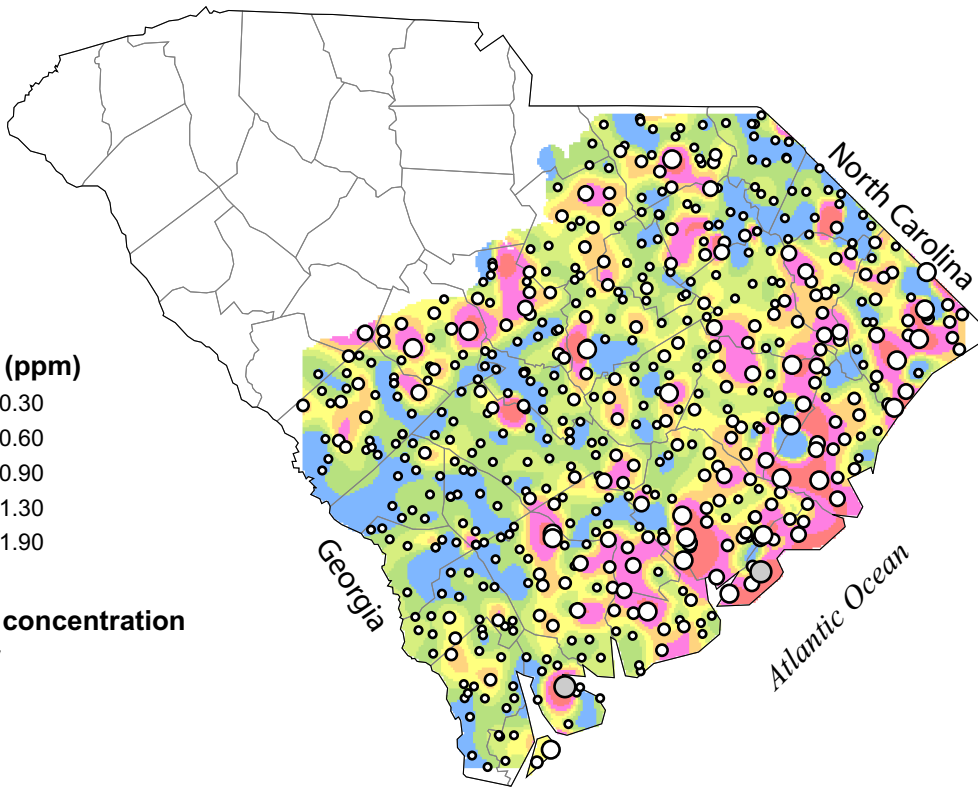
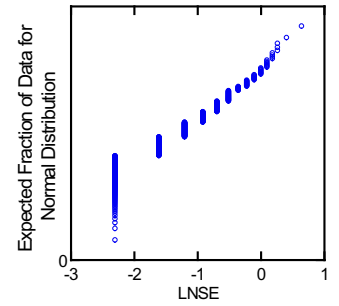
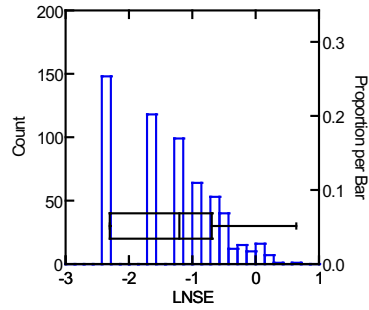
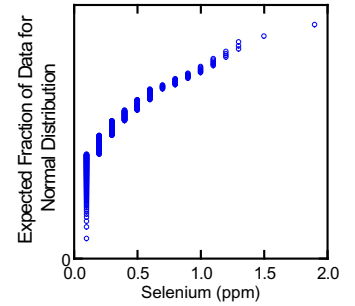
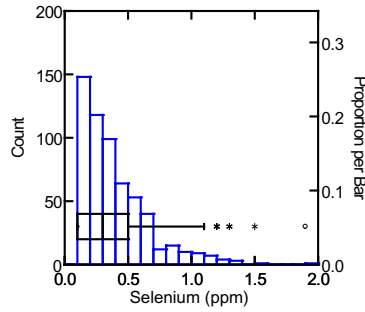
Detection minimum: 0.2 mg/kg
 Default value : 0.1 mg/kg
 Detection maximum: xxx mg/kg

Soil Samples

Crustal abundance: 0.05 mg/kg
 Granite-granodiorite abundance: 0.025 mg/kg

Se

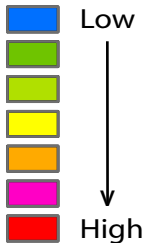
	Se	LnSe
N of cases	584	584
Minimum	0.100	-2.303
Maximum	1.900	0.642
Median	0.300	-1.204
Mean	0.347	-1.320
Standard Dev	0.264	0.728
Variance	0.070	0.529
Samples set to default value: 148		



Selenium (ppm)

- 0.10 - 0.30
- 0.31 - 0.60
- 0.61 - 0.90
- 0.91 - 1.30
- 1.31 - 1.90

Selenium concentration



Soil samples were only taken in the Atlantic Coastal Plain

1:3,380,000

