

Relations Between Hydrological Variables and Year-Class Strength of Sportfish in Four Florida Rivers

T. F. Bonvechio

Florida Fish & Wildlife Conservation Commission
1601 Scotty's Road, Kissimmee, Florida 34744

M. S. Allen

Department of Fisheries & Aquatic Sciences, University of Florida
7922 NW 71st Street, Gainesville, Florida 32653

Objectives

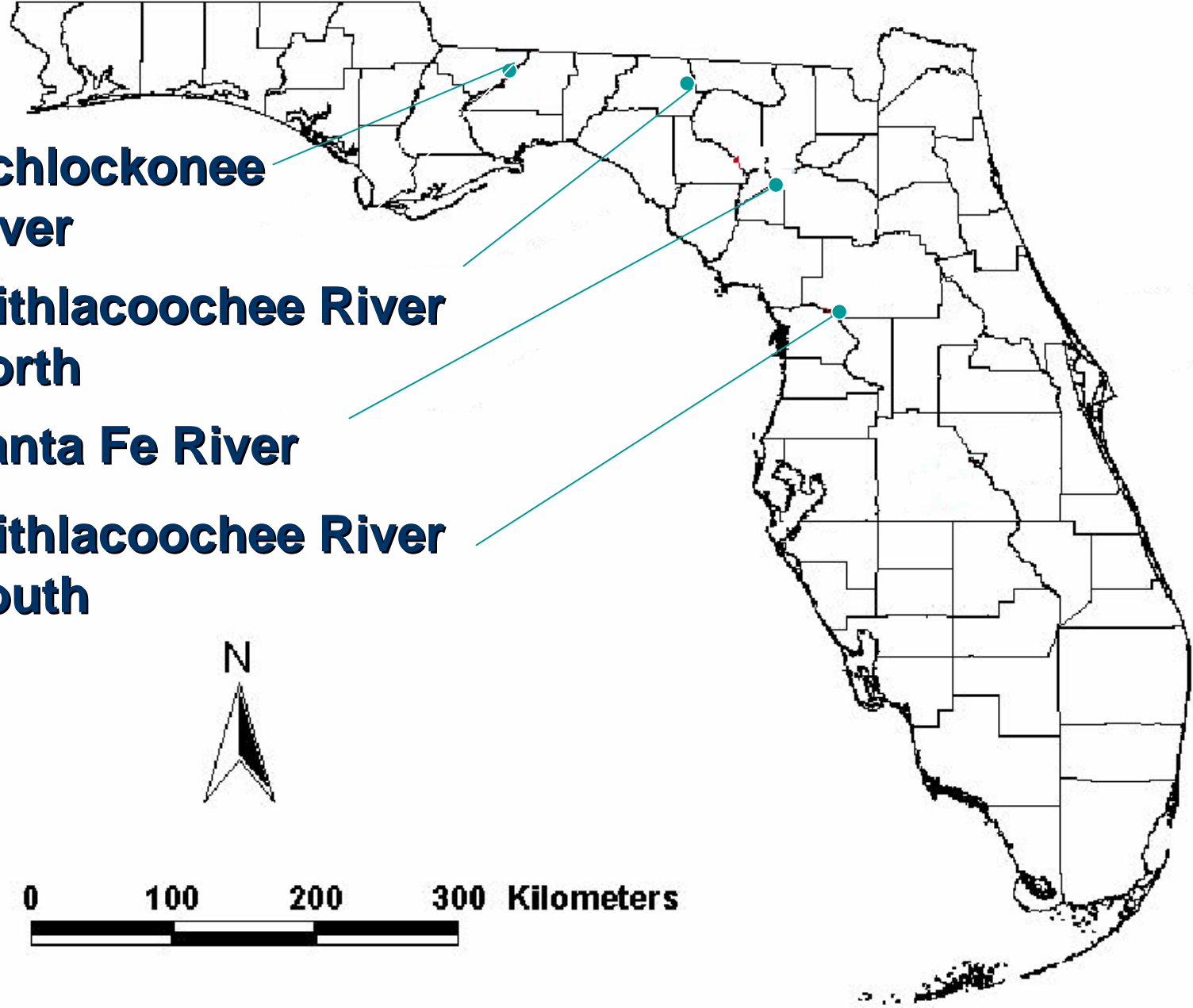
- Assess how variation in flow influences recruitment of riverine fishes
 - Survival and abundance

**Ochlockonee
River**

**Withlacoochee River
North**

Santa Fe River

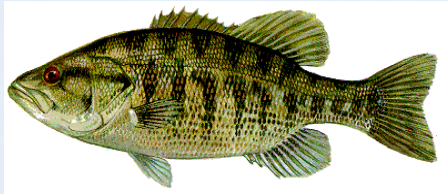
**Withlacoochee River
South**



Methods

- **Boat electrofishing was conducted in 20 minute transects**
- **At least five fish per centimeter group were sacrificed for aging**

Species Collected



Micropterus notius
Suwannee Bass



Micropterus salmoides
Largemouth Bass



Lepomis macrochirus
Bluegill Sunfish



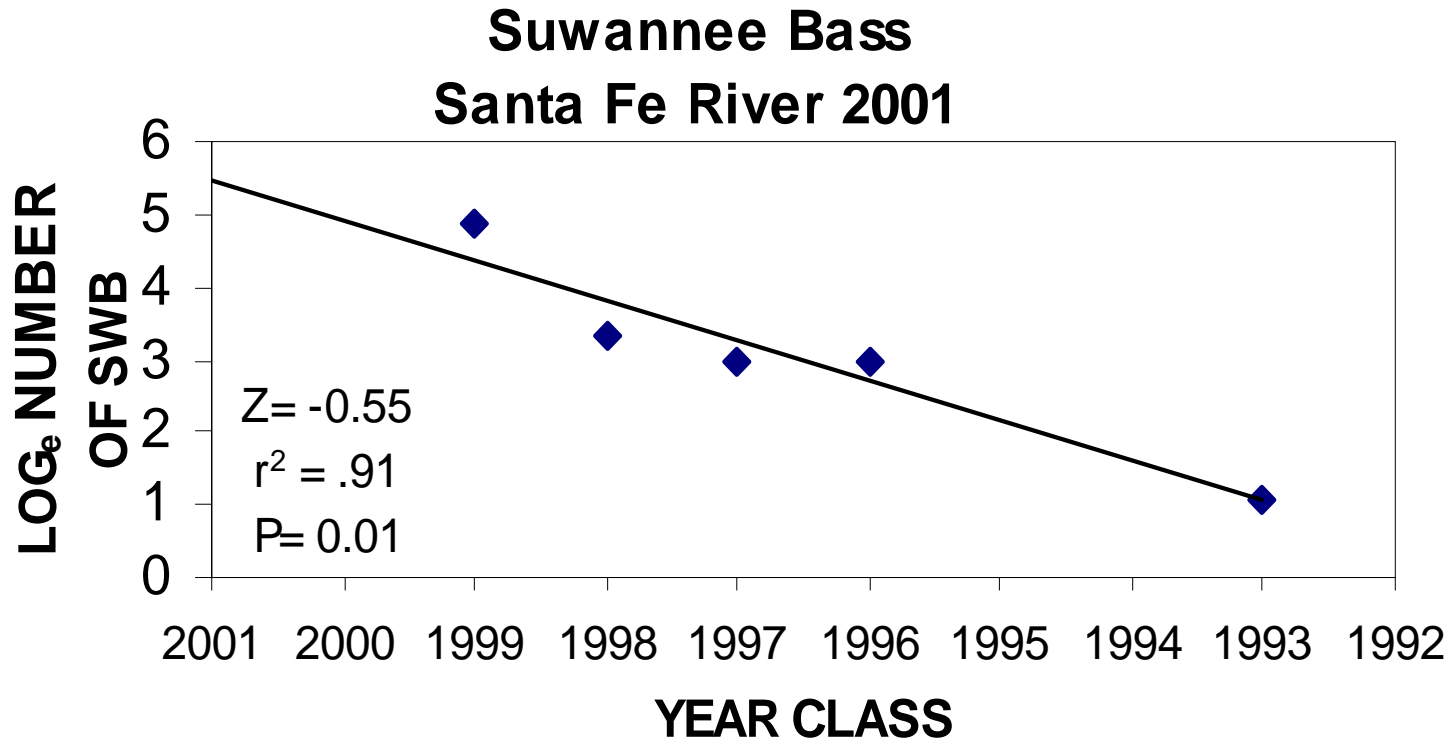
Lepomis auritus
Redbreast Sunfish

Age Determination

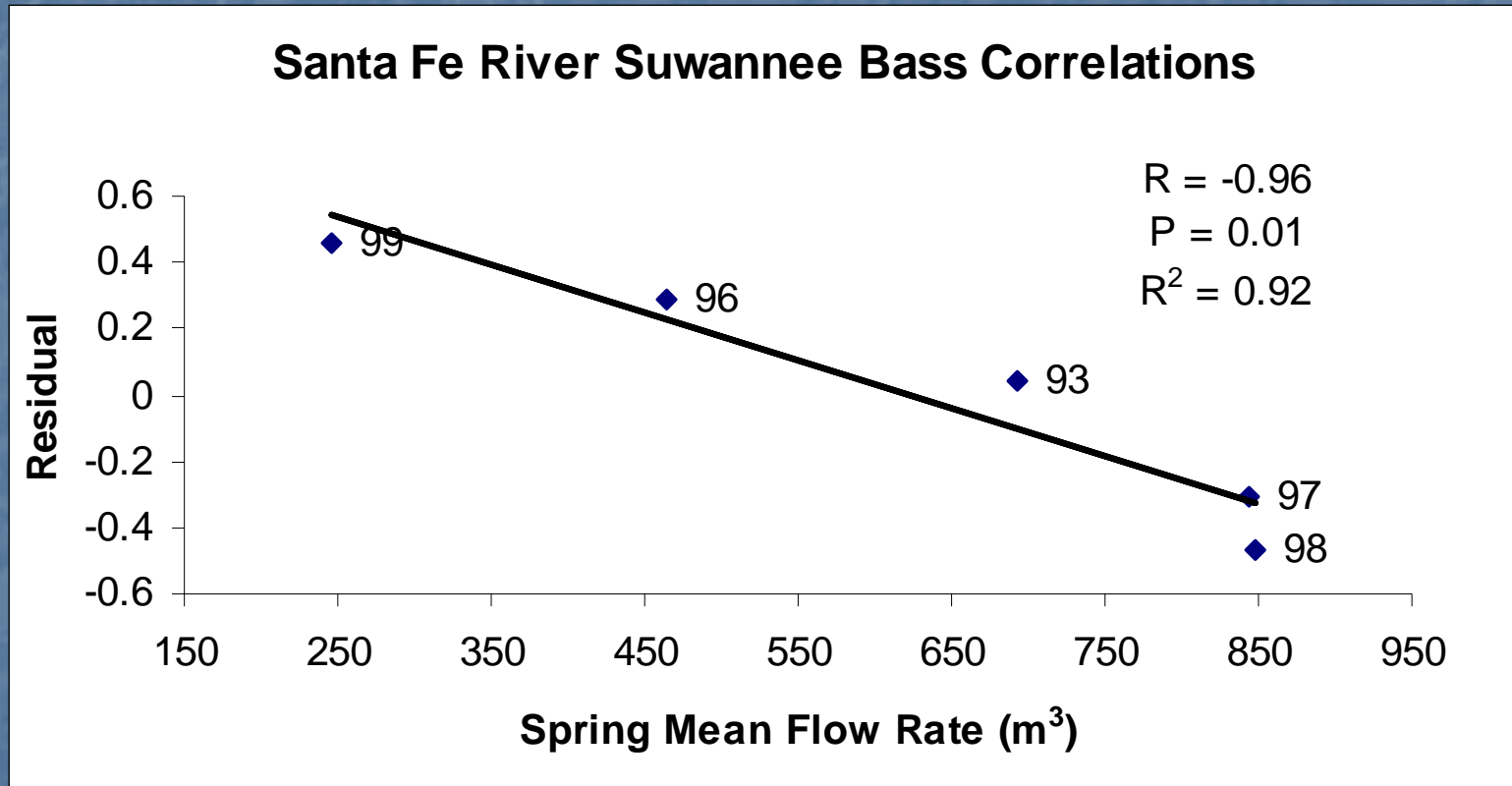
- Otoliths from fish were sectioned with a diamond wheel saw into 0.5 mm sections
- Annuli were counted by two independent readers



Catch- Curve



Correlation Analysis



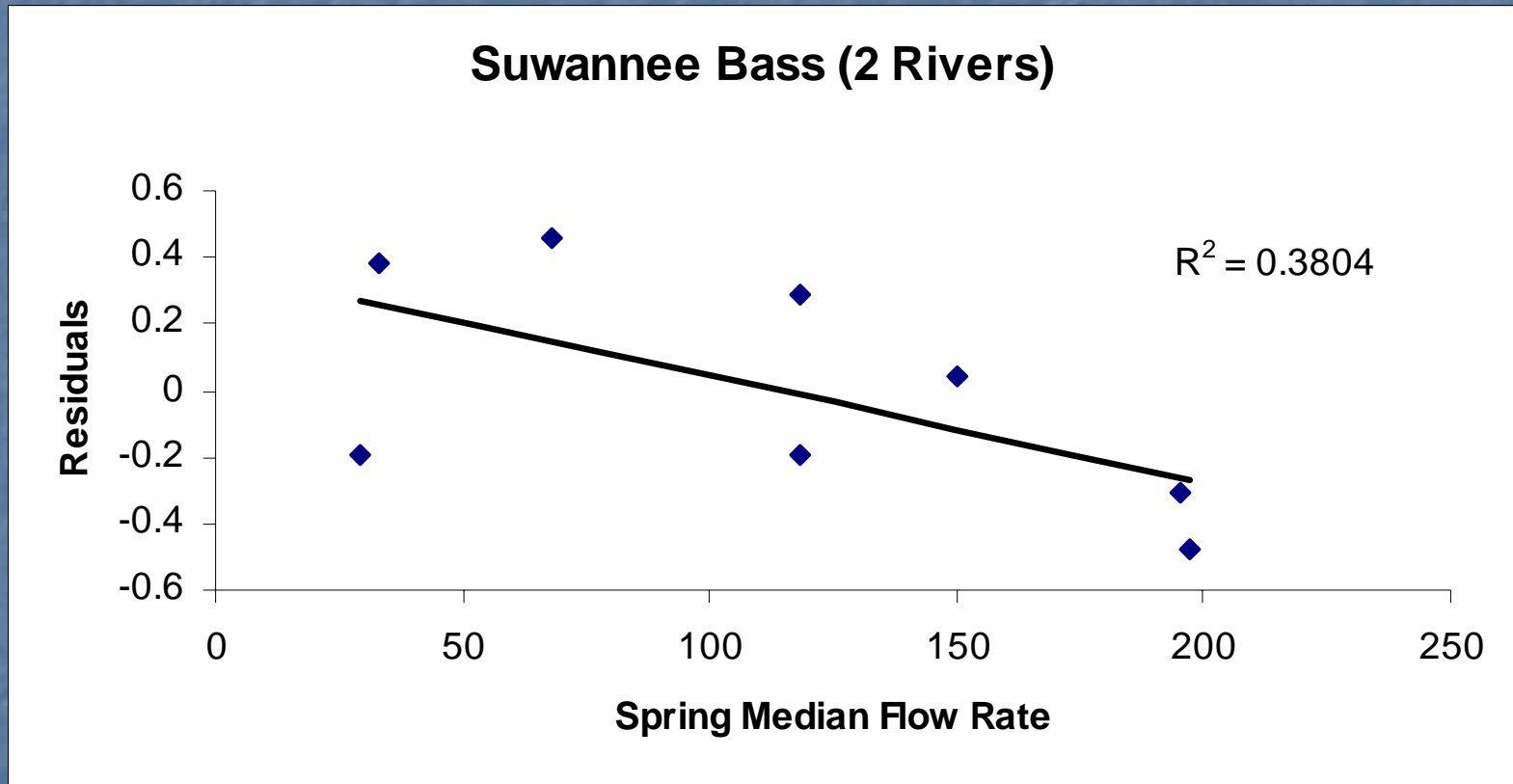
Results



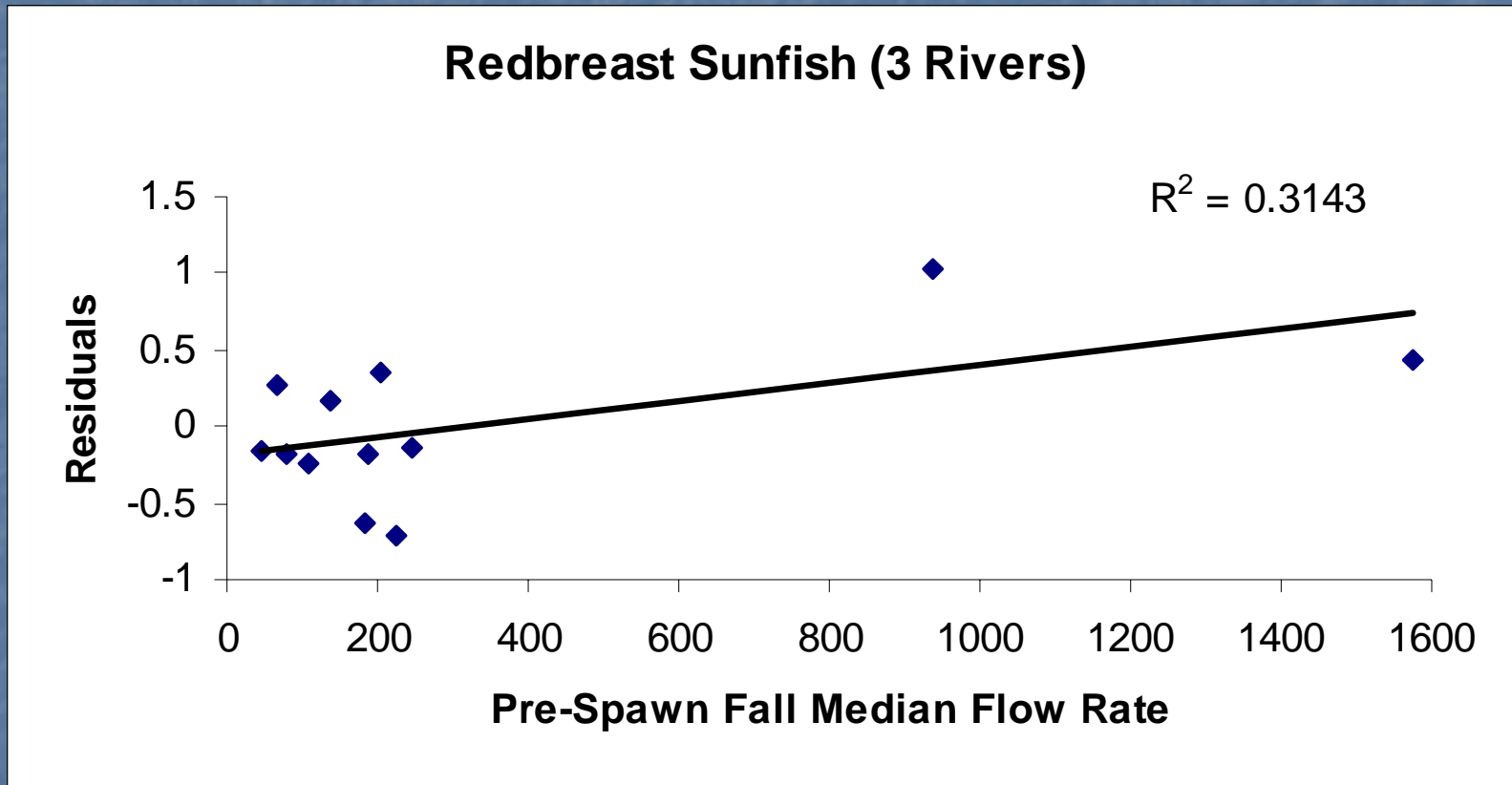
Correlation Results

- Year-class strength of largemouth and Suwannee bass was negatively related to flow in rivers
- Year-class strength of bluegill and redbreast sunfish was positively related to flow in rivers

Regression Graphs



Regression Graphs



Management Implications

- Species examined responded differently to flow and levels

sunfish +

Black bass –

- Longevity of the species may be an integral part in setting MFL's

sunfish - short lived

Black bass - longer lifespan

Management Implications

- High flows at least once every three years in fall may allow inundation of floodplain habitat, thus favorable conditions for *sunfish* in rivers.
- low flows for three or more consecutive years should be prevented, and thus MFL's should consider biological impacts to short-lived species such as *sunfishes*.

Acknowledgements

**Special thanks to Charles Cichra, James Estes,
Jerry Krummrich, Debra Murie, and Jeff Hill**

**Funding provided by the Florida Fish and
Wildlife Conservation Commission**