

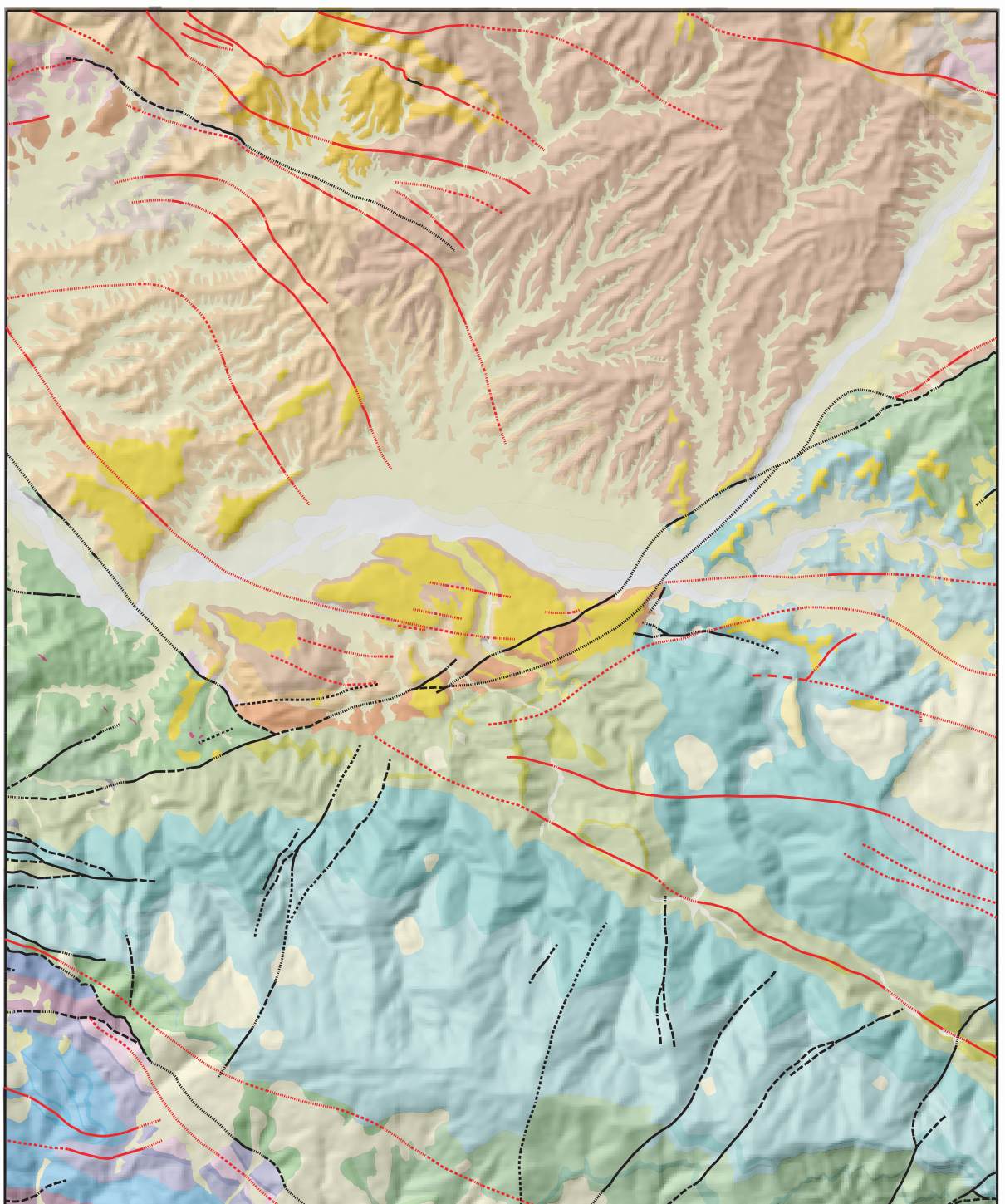
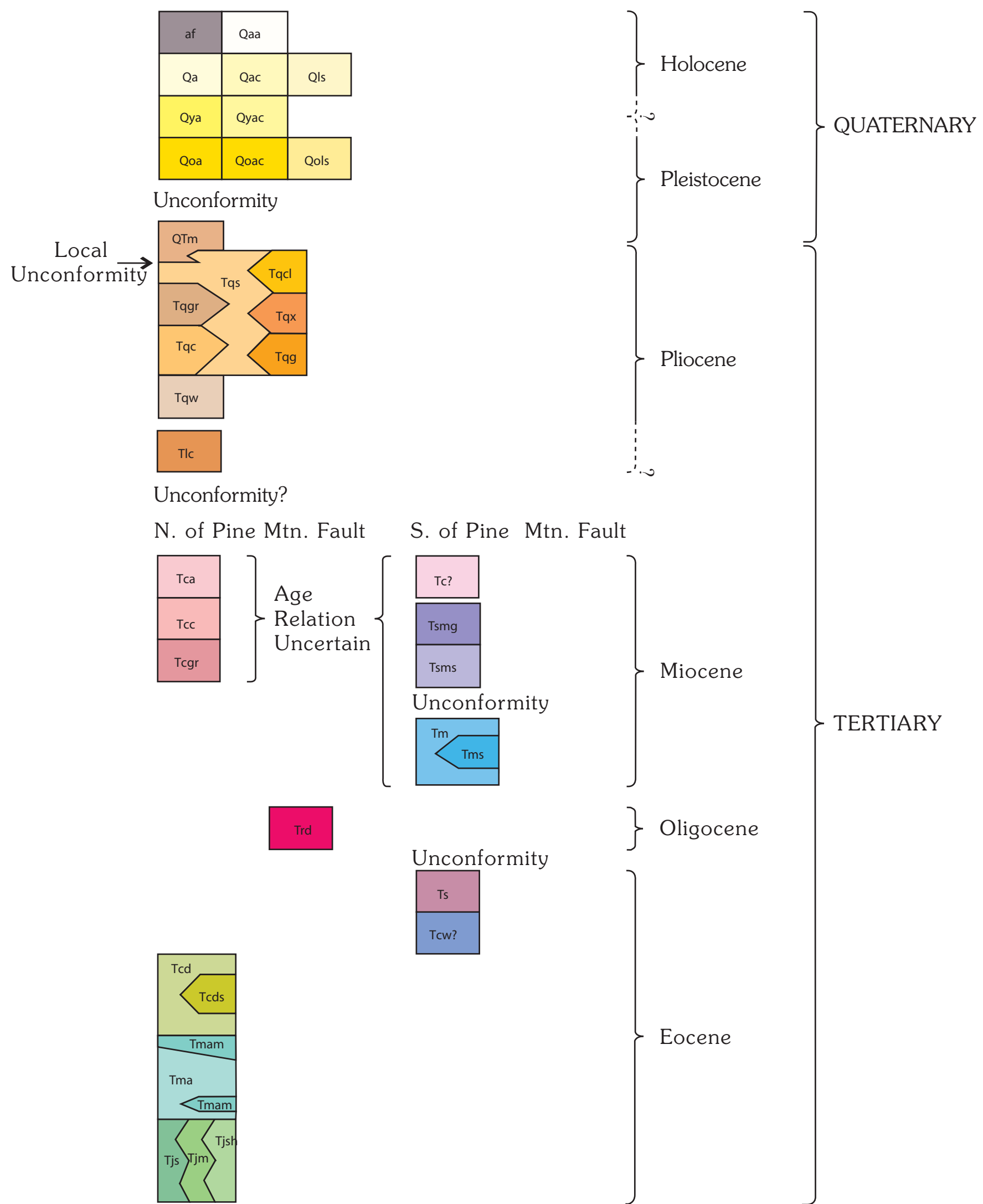
GEOLOGIC MAP OF THE REYES PEAK QUADRANGLE,
VENTURA COUNTY, CALIFORNIA

By
Scott A. Minor

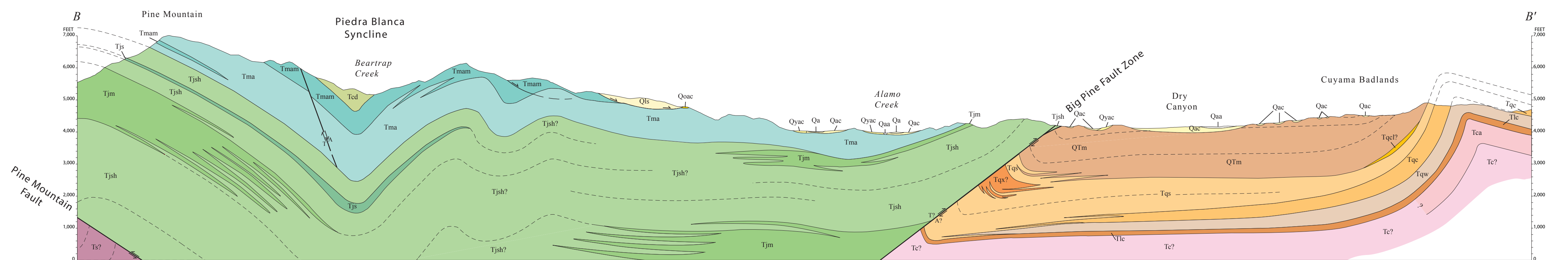
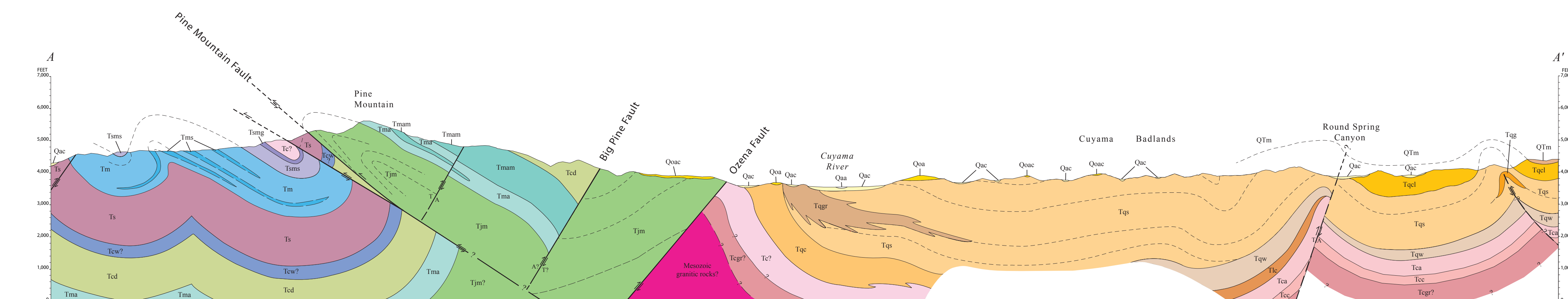
LIST OF MAP UNITS

- Artificial fill (Holocene)
- Active alluvium (Holocene)
- Very young alluvium (Holocene)
- Very young alluvium and colluvium (Holocene)
- Landslide deposits (Holocene)
- Young alluvium (Holocene and Pleistocene?)
- Young alluvium and colluvium (Holocene and Pleistocene?)
- Old alluvium (Pleistocene)
- Old alluvium and colluvium (Pleistocene)
- Old landslide deposit (Pleistocene?)
- Morales Formation (Pleistocene and Pliocene)
- Quatal Formation, sandstone facies (Pliocene)
- Quatal Formation, clay-rich facies (Pliocene)
- Quatal Formation, granitic breccia facies (Pliocene)
- Quatal Formation, sedimentary breccia facies (Pliocene)
- Quatal Formation, conglomerate facies (Pliocene)
- Quatal Formation, gypsum (Pliocene)
- Quatal Formation, white sandstone facies (Pliocene)
- Lockwood Clay (Pliocene?)
- Caliente Formation, arkosic-lithic sandstone facies (Miocene)
- Caliente Formation, uncertain (Miocene)
- Caliente Formation, conglomerate facies (Miocene)
- Caliente Formation, granitic breccia facies (Miocene)
- Santa Margarita Formation, gypsum (Miocene)
- Santa Margarita Formation, sandstone and mudstone (Miocene)
- Monterey Formation (Miocene)
- Monterey Formation, sandstone (Miocene)
- Rhyolitic intrusions (Oligocene)
- Sespe Formation (Eocene)
- Coldwater Sandstone, uncertain (Eocene)
- Cozy Dell Shale (Eocene)
- Cozy Dell Shale, sandstone (Eocene)
- Matiija Sandstone, interbedded sandstone and shale facies (Eocene)
- Matiija Sandstone (Eocene)
- Juncal Formation, sandstone facies (Eocene)
- Juncal Formation, interbedded sandstone, siltstone, and shale facies (Eocene)
- Juncal Formation, siltstone and shale facies (Eocene)

CORRELATION OF MAP UNITS



Shaded relief map of the Reyes Peak quadrangle



TECTONIC LOCATION MAP

