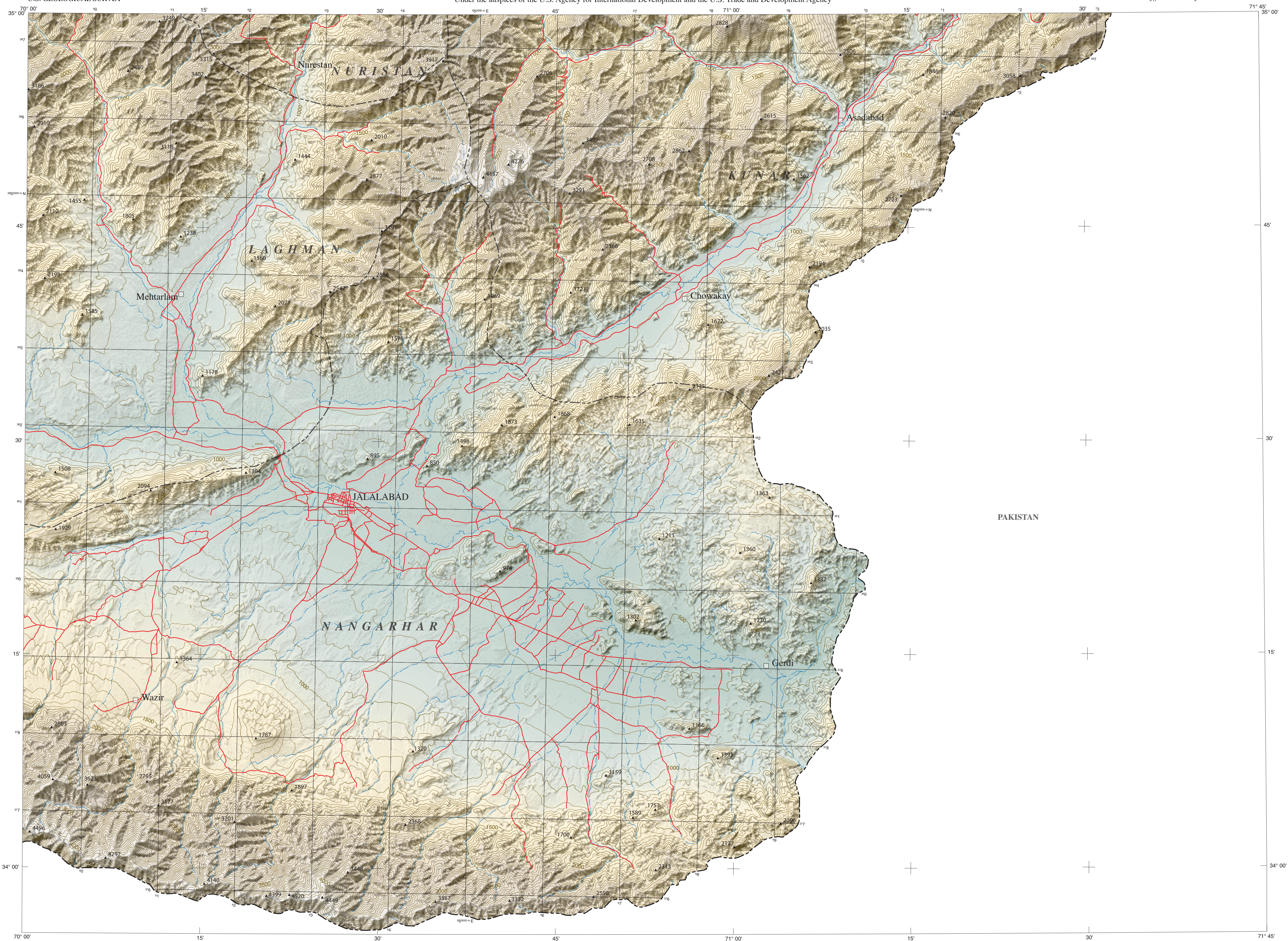


U.S. DEPARTMENT OF THE INTERIOR
U.S. GEOLOGICAL SURVEY

AFGHAN GEOLOGICAL SURVEY
Prepared in cooperation with the U.S. Geological Survey and the Afghanistan Geodesy and Cartography Head Office
Under the auspices of the U.S. Agency for International Development and the U.S. Trade and Development Agency

USGS OPEN-FILE REPORT 2005-1108-B
AGS OPEN-FILE REPORT (511/512/517) 2005-1108-B
USGS Afghanistan Project Product No. 055



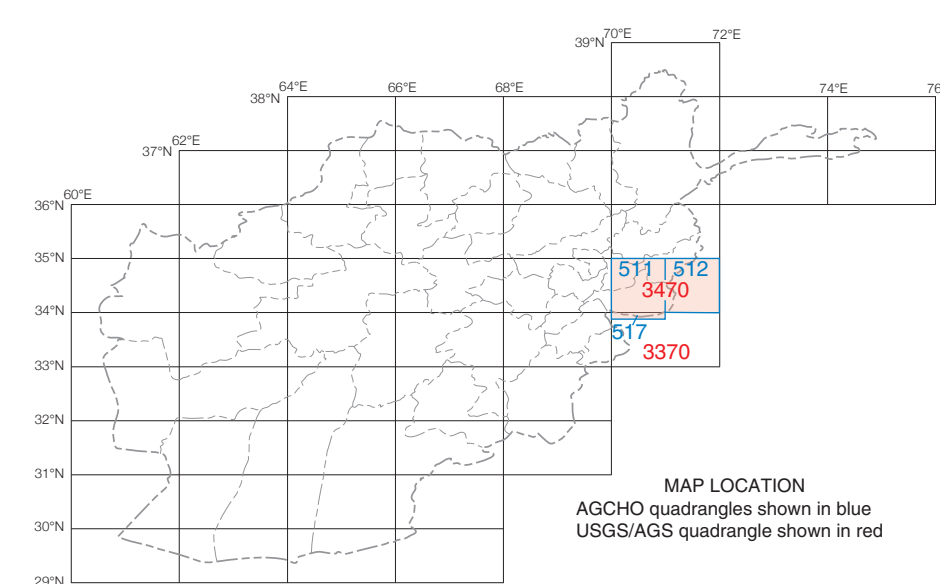
Base from Shuttle Radar Topography Mission (SRTM) 85-meter digital data.
Cultural data from digital files from AIMS Web site (<http://www.aims.org.af>)
Projection: Universal Transverse Mercator, zone 42, WGS 84 Datum

DATA SUMMARY
This map was produced from several larger digital datasets. Topography was derived from Shuttle Radar Topography Mission (SRTM) 85-meter digital data. Gaps in the original dataset were filled with data digitized from contours on 1:200,000-scale Soviet General Staff Sheets (1978-1997). Contours were generated by cubic convolution averaged over four pixels using TNTmips' surface-modeling capabilities. Minor artifacts resulting from the auto-contouring technique are present. Streams were auto-generated from the SRTM data in TNTmips as flow paths. Flow paths were limited in number by their Horton value on a quadrangle-by-quadrangle basis. Peak elevations were averaged over an area measuring 85 m by 85 m (represented by one pixel), and they are slightly lower than the highest corresponding point on the ground. Cultural data were extracted from files downloaded from the Afghanistan Information Management Service (AIMS) Web site (<http://www.aims.org.af>). The AIMS files were originally derived from maps produced by the Afghanistan Geodesy and Cartography Head Office (AGCHO). Because cultural features were not derived from the SRTM base, they do not match it precisely. Province boundaries are not exactly located.
This map is part of a series that includes a geologic map, a topographic map, a Landsat natural-color-image map, and a Landsat false-color-image map for the USGS/AGS (Afghan Geological Survey) quadrangles covering Afghanistan. The maps for any given quadrangle have the same open-file number but a different letter suffix, namely, -A, -B, -C, and -D for the geologic, topographic, Landsat natural-color, and Landsat false-color maps, respectively. The present map series is to be followed by a second series, in which the geology is reinterpreted on the basis of analysis of remote-sensing data, limited fieldwork, and library research. The second series is to be produced by the USGS in cooperation with the AGS and AGCHO.
Geospatial analysis software developed by MicroImage, Inc., Lincoln, NE 68508-2010.

SCALE 1:250 000
0 5 10 15 20 25 30 35 40 KILOMETERS
0 5 10 15 20 MILES

CONTOUR INTERVAL 100 METERS

EXPLANATION
— Road: improved or unimproved
--- Province boundary
--- Streams; mostly intermittent
▲ 3725 Peaks; elevations in meters
□ City, town, or village



Any use of trade names in this publication is for descriptive purposes only and does not imply endorsement by the U.S. Geological Survey

TOPOGRAPHIC MAP OF QUADRANGLE 3470 AND THE NORTHERN EDGE OF QUADRANGLE 3370, JALAL-ABAD (511), CHAGHASARAY (512), AND NORTHERNMOST JAJI-MAYDAN (517) QUADRANGLES, AFGHANISTAN

Compiled by
Robert G. Bohannon
2005

