

105°52'30"W

105°50'0"W

105°47'30"W

105°45'0"W

36°37'30"N

36°35'0"N

36°32'30"N

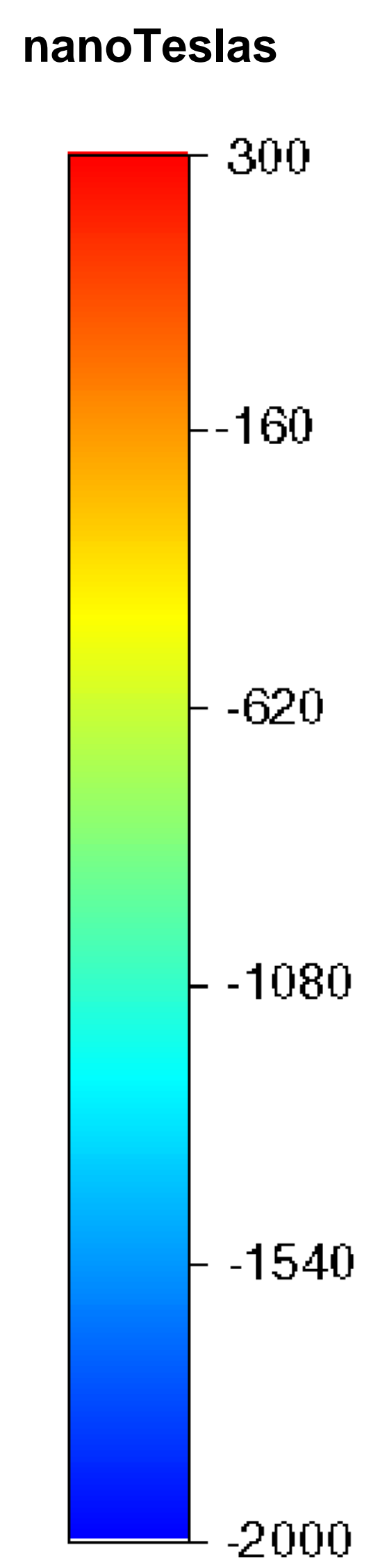
36°30'0"N

36°37'30"N

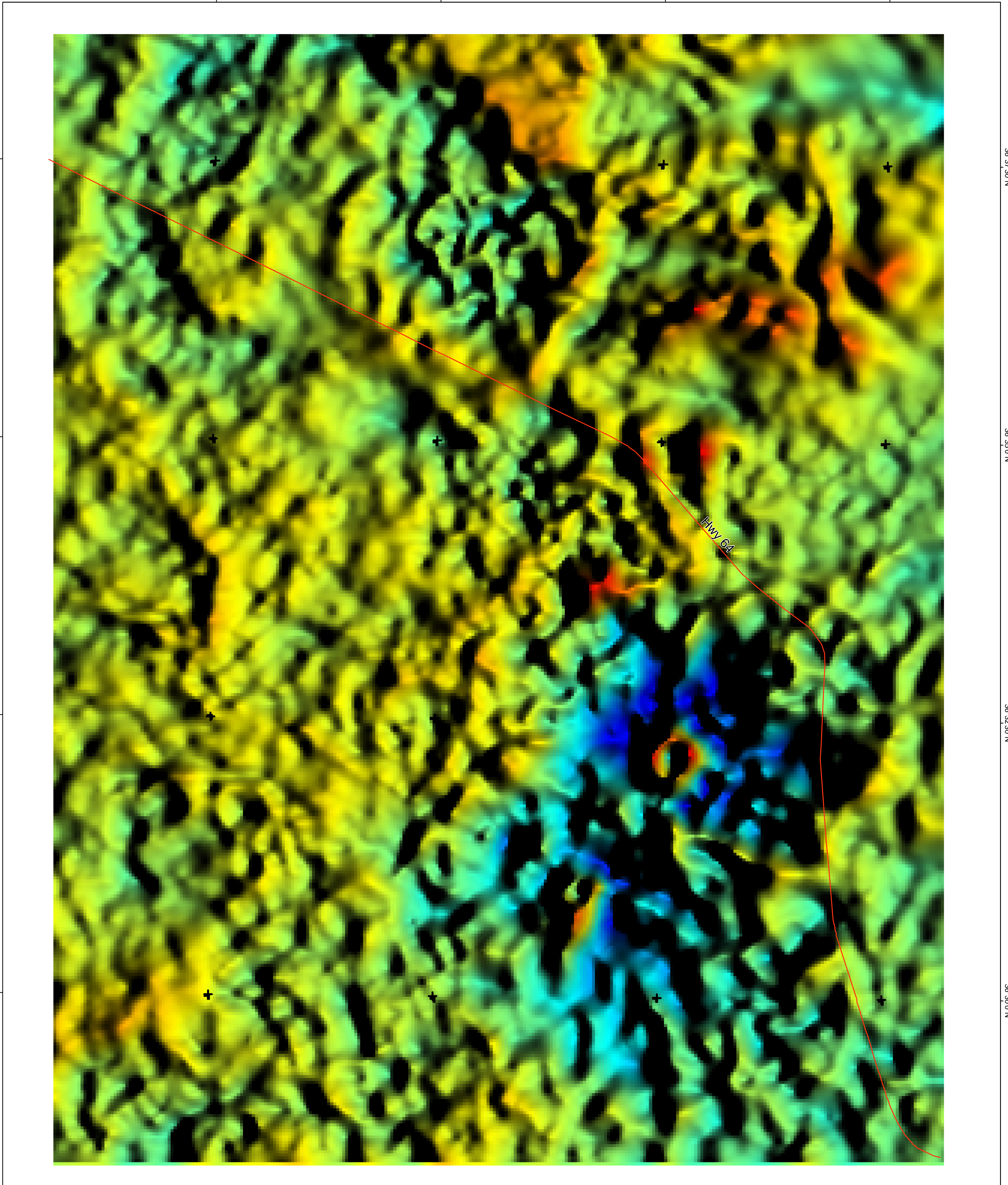
36°35'0"N

36°32'30"N

36°30'0"N



Illuminated from
the east



105°52'30"W

105°50'0"W

105°47'30"W

105°45'0"W



Central San Luis Basin Aeromagnetic Survey
Color shaded-relief image of continued, reduced-to-pole (RTP) magnetic data,
Cerro de Las Taoses area.