

## *Didemnum vexillum* - Shakespeare Bay, New Zealand, Images

[Back to Index](#)

NEW ZEALAND COAST: [Occurrences](#) / [Location Data](#) / [Regional Location Map](#)

IMAGES: [Picton](#) / [Shakespeare Bay](#) / [Waimahara Wharf](#) **NEW** / [Whangamata Harbour](#) / [Larvae & Colony Morphology](#)

[Printable version in PDF format](#)



Image SH\_SB\_NZ002

**Image SH\_SB\_NZ002.** *Didemnum vexillum* hanging from the Steel Mariner barge in Shakespeare Bay. Water depth 2 m. Water temperature approximately 11 deg C. May 10, 2002. Photo credit: Sean Handley, NIWA. [Location no. 11](#)

Click here to [download image](#).



Image AC\_SB\_NZ016

**Image AC\_SB\_NZ016.** *Didemnum vexillum* growing on the gravel and shells of seabed underneath the Steel Mariner barge in Shakespeare Bay. Note overgrowth on Greenshell mussel *Perna canaliculus*. Water depth 8 m. Water temperature approximately 20 dec C. February 2002. Photo credit: Ashley Couatts, Cawthron Institute. [Location no. 11](#)

Click here to [download image](#).



Image AC\_SB\_NZ003

**Image AC\_SB\_NZ003.** Image AC\_SB\_NZ003. *Didemnum vexillum* hanging from a wharf pile in Shakespeare Bay. Water depth 3 m. Water temperature approximately 15 deg C. October 2002.

Photo credit: Ashley Coutts, Cawthron Institute. [Location no. 11](#)

Click here to [download image](#).



Image AC\_SB\_NZ004

**Image AC\_SB\_NZ004.** Newly established *Didemnum vexillum* colony on polythene plastic (<14 days old). Shakespeare Bay. Water depth 6 m. Water temperature approximately 17 deg C. December 2003. Photo credit: Ashley Coutts, Cawthron Institute. [Location no. 11](#)

Click here to [download image](#).



Image SH\_SB\_NZ005

**Image SH\_SB\_NZ005.** *Didemnum vexillum* smothering Greenshell mussels *Perna canaliculus*. Shakespeare Bay. Water depth 6 m. Water temperature approximately 11 deg C. May 10, 2002.

Photo credit: Sean Handley, NIWA. [Location no. 11](#)

Click here to [download image](#).



Image AC\_SB\_NZ006

**Image AC\_SB\_NZ006.** *Didemnum vexillum* smothering Greenshell mussels *Perna canaliculus*. Shakespeare Bay. Water depth 0 m. Water temperature approximately 19 deg C. February 2002.

Photo credit: Ashley Coutts, Cawthron Institute. [Location no. 11](#)

Click here to [download image](#).



Image AC\_SB\_NZ007

**Image AC\_SB\_NZ007.** The chiton *Cryptoconchus porosus* grazing on *Didemnum vexillum* on rocks underneath Waimahara wharf, Shakespeare Bay. Water depth 3 m. Water temperature approximately 17 deg C. December 2003. Photo credit: Ashley Coutts, Cawthron Institute. [Location no. 11](#)

Click here to [download image](#).



Image AC\_SB\_NZ008

**Image AC\_SB\_NZ008.** The pink sea urchin *Notechinus albocinctus* grazing on *Didemnum vexillum* on the seabed underneath Waimahara wharf, Shakespeare Bay. Water depth 3 m. Water temperature approximately 17 deg C. December 2003. Photo credit: Ashley Coutts, Cawthron Institute. [Location no. 11](#)

Click here to [download image](#).

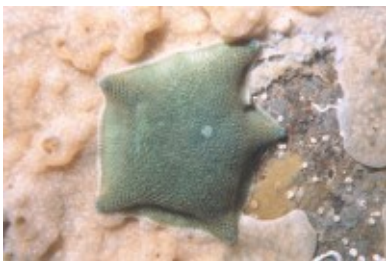


Image AC\_SB\_NZ009

**Image AC\_SB\_NZ009.** The common cushion starfish *Patriella regularis* grazing on *Didemnum vexillum* on the seabed underneath Waimahara wharf, Shakespeare Bay. Water depth 3 m. Water temperature approximately 17 deg C. December 2003. Photo credit: Ashley Coutts, Cawthron Institute. [Location no. 11](#)

Click here to [download image](#).

[Back to Top](#)



To view files in PDF format, download free copy of [Adobe Reader](#).

[Back to Index](#)

[NEW ZEALAND COAST: Occurrences](#) / [Location Data](#) / [Regional Location Map](#)

IMAGES: [Picton](#) / [Shakespeare Bay](#) / [Waimahara Wharf](#) **NEW** / [Whangamata Harbour](#) / [Larvae & Colony Morphology](#)

[Accessibility](#)[FOIA](#)[Privacy](#)[Policies](#) and [Notices](#)

[U.S. Department of the Interior](#) | [U.S. Geological Survey](#) | [Coastal and Marine Geology](#) | [Woods Hole Science Center](#)

URL: [http://10.0.40.33/project-pages/stellwagen/didemnum/htm/pdf\\_page15a.htm](http://10.0.40.33/project-pages/stellwagen/didemnum/htm/pdf_page15a.htm)

Page Contact Information: [webmaster-woodshole@usgs.gov](mailto:webmaster-woodshole@usgs.gov)

Page Last Modified: undefined

