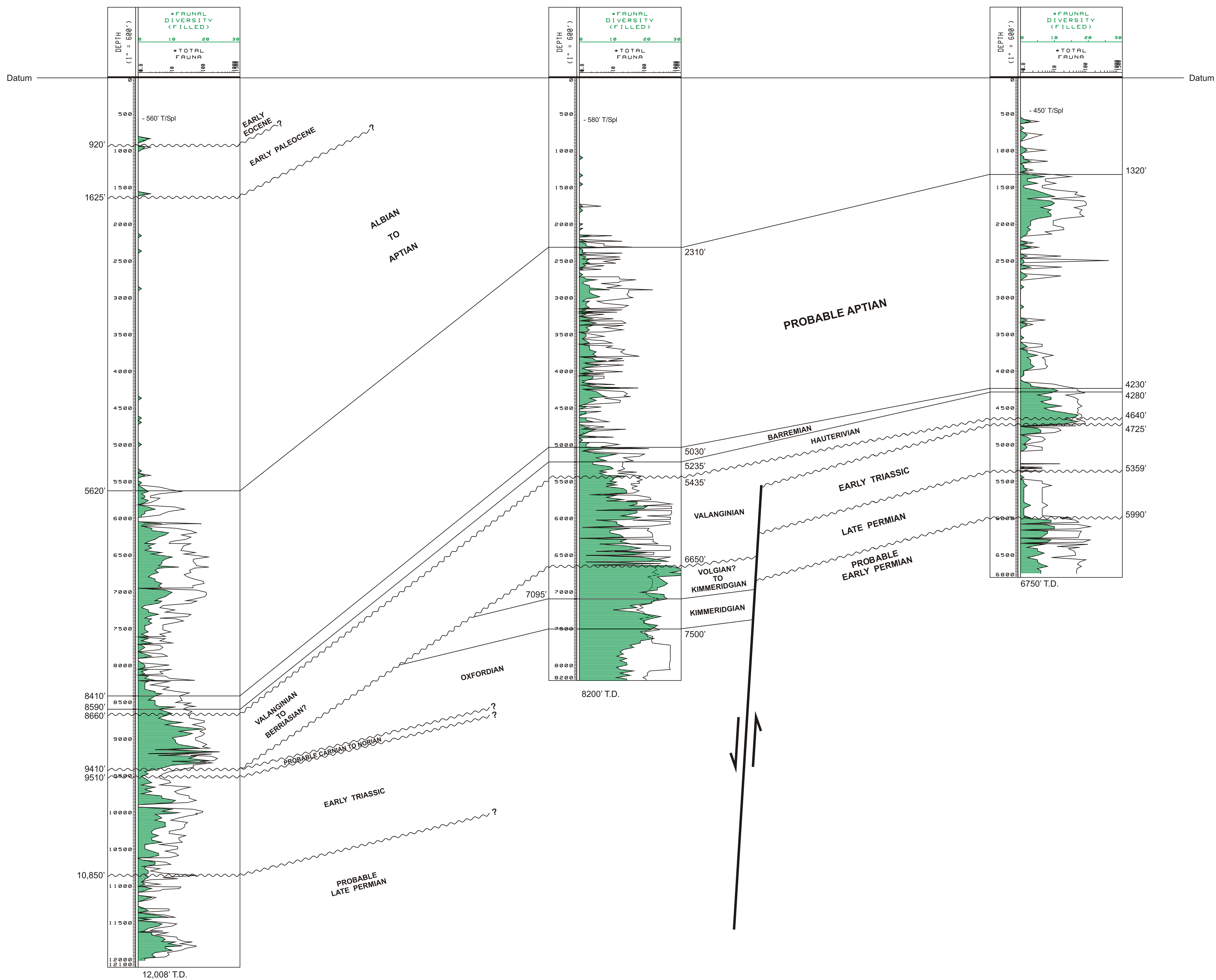


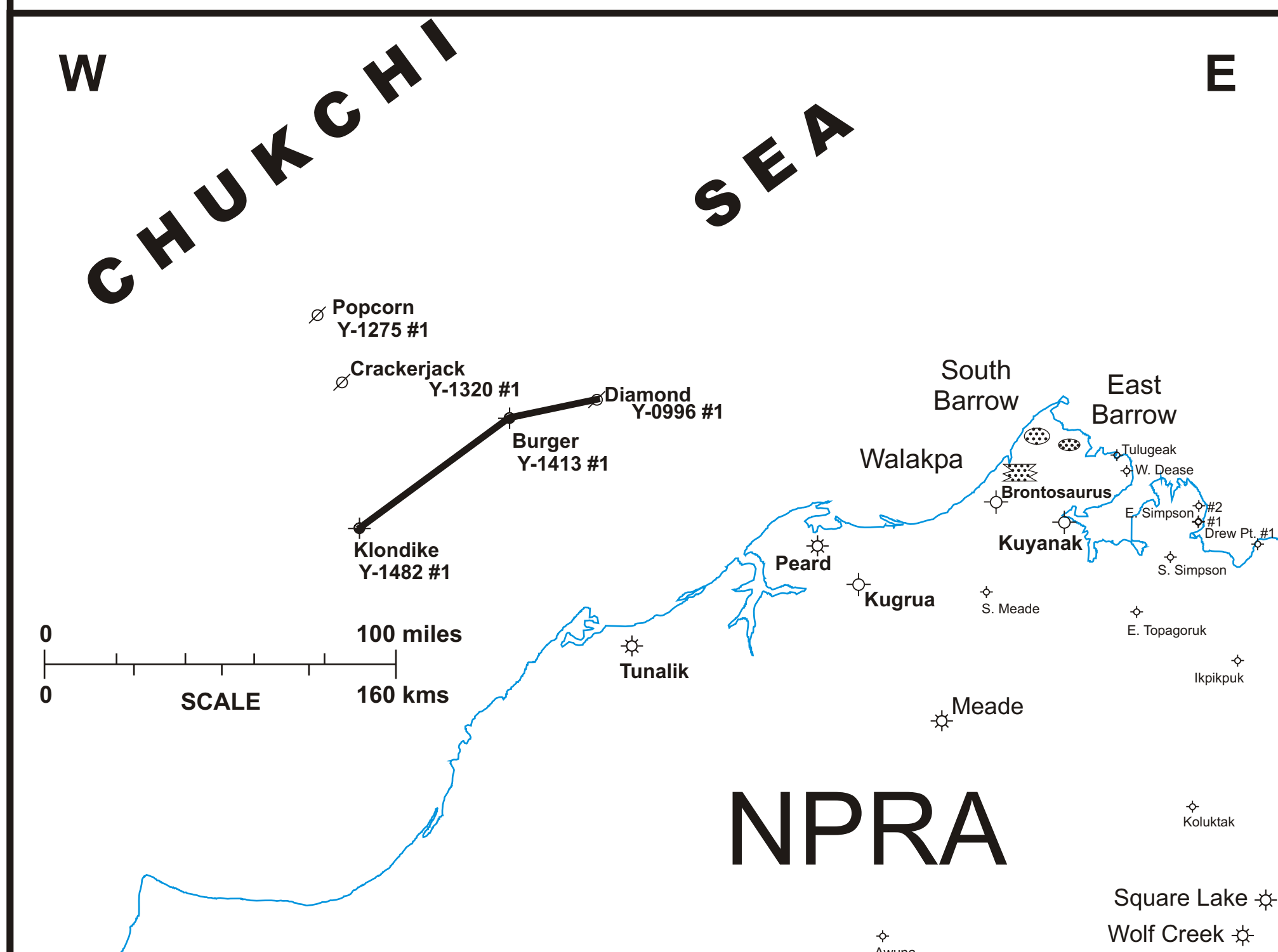
Shell
OCS-Y-1482 No.1 (Klondike)

Shell
OCS-Y-1413 No.1 (Burger)

Chevron
OCS-Y-0996 No.1 (Diamond)



WELL LOCATION MAP



NOTE: LIMITED SEISMIC WAS AVAILABLE IN PREPARING THESE CORRELATION SECTIONS SO THEY ARE DIAGRAMATIC & THE NUMBER OF FAULTS AND ANGLE OF FAULTS IS SUBJECT TO SEISMIC INTERPRETATION MODIFICATION. ALSO, BIOSTRATIGRAPHIC THICKNESS CHANGES ACROSS FAULTS MAY BE DUE TO EITHER DEPOSITIONAL PROCESSES OR LATERAL (STRIKE SLIP) MOVEMENT ASSOCIATED WITH THE FAULTS.

PLATE B-3

2003 CHUKCHI SEA
BIOSTRATIGRAPHY
CORRELATION PROJECT



CORRELATION SECTION C

KLONDIKE - BURGER - DIAMOND

INTERPRETED BY: Michael B. Mickey
Hideyo Haga

DRAFTED BY: Edward Padilla

VERTICAL SCALE 1" = 600'
NO HORIZONTAL SCALE

September, 2003