

# AYER QUADRANGLE

Excerpted from: Surficial Geologic Map of the Ashby-Lowell-Sterling-Billerica 11-quadrangle area in Northeast-Central Massachusetts  
Compiled by Byron D. Stone and Janet R. Stone  
Open-File Report 2006-1260C

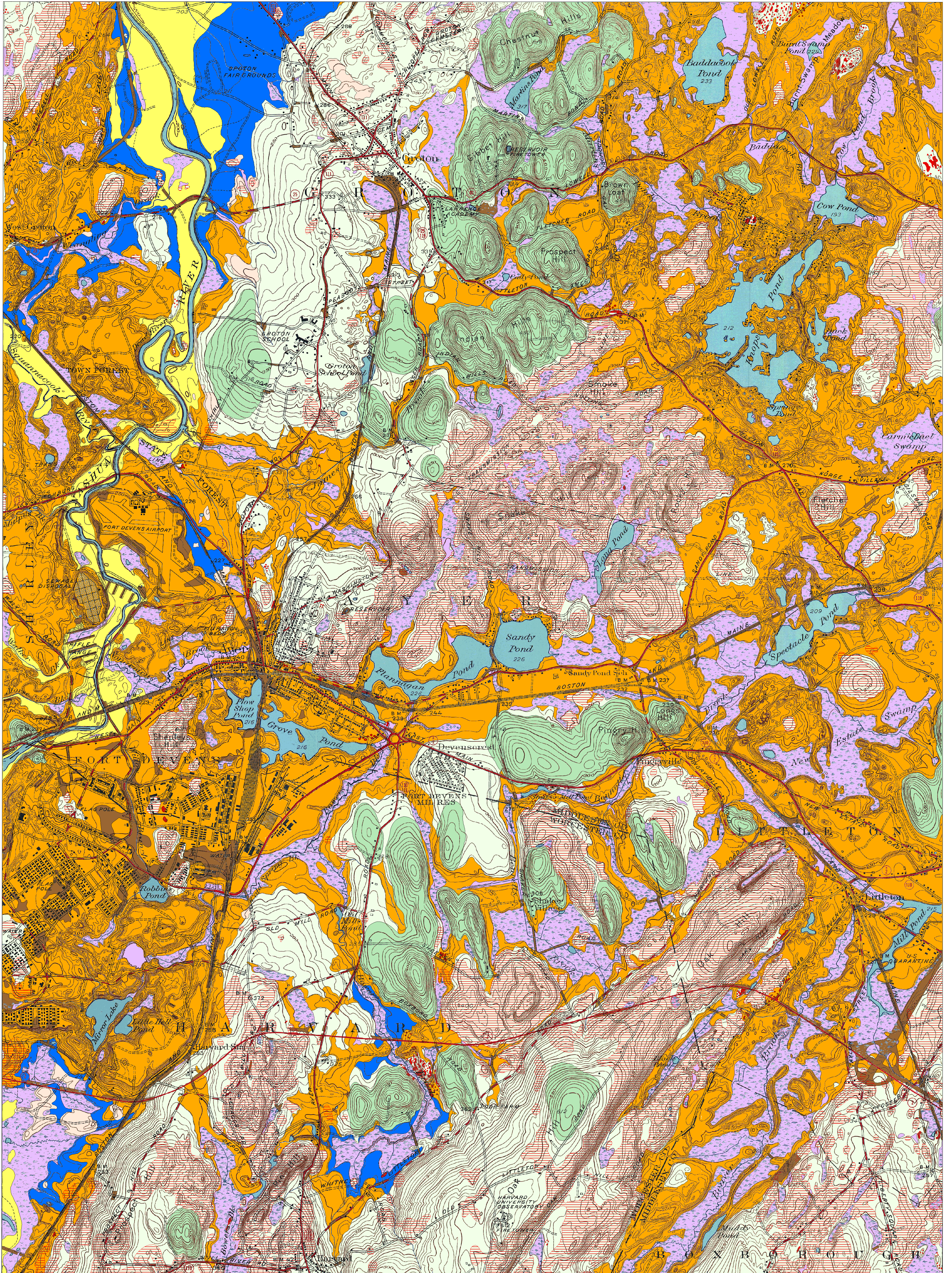
Explanatory pamphlet accompanies map

71°37'30"W

71°30'W

42°37'30"N

42°37'30"N



42°30'N

42°30'N

71°37'30"W

71°30'W

Scale 1:24,000

