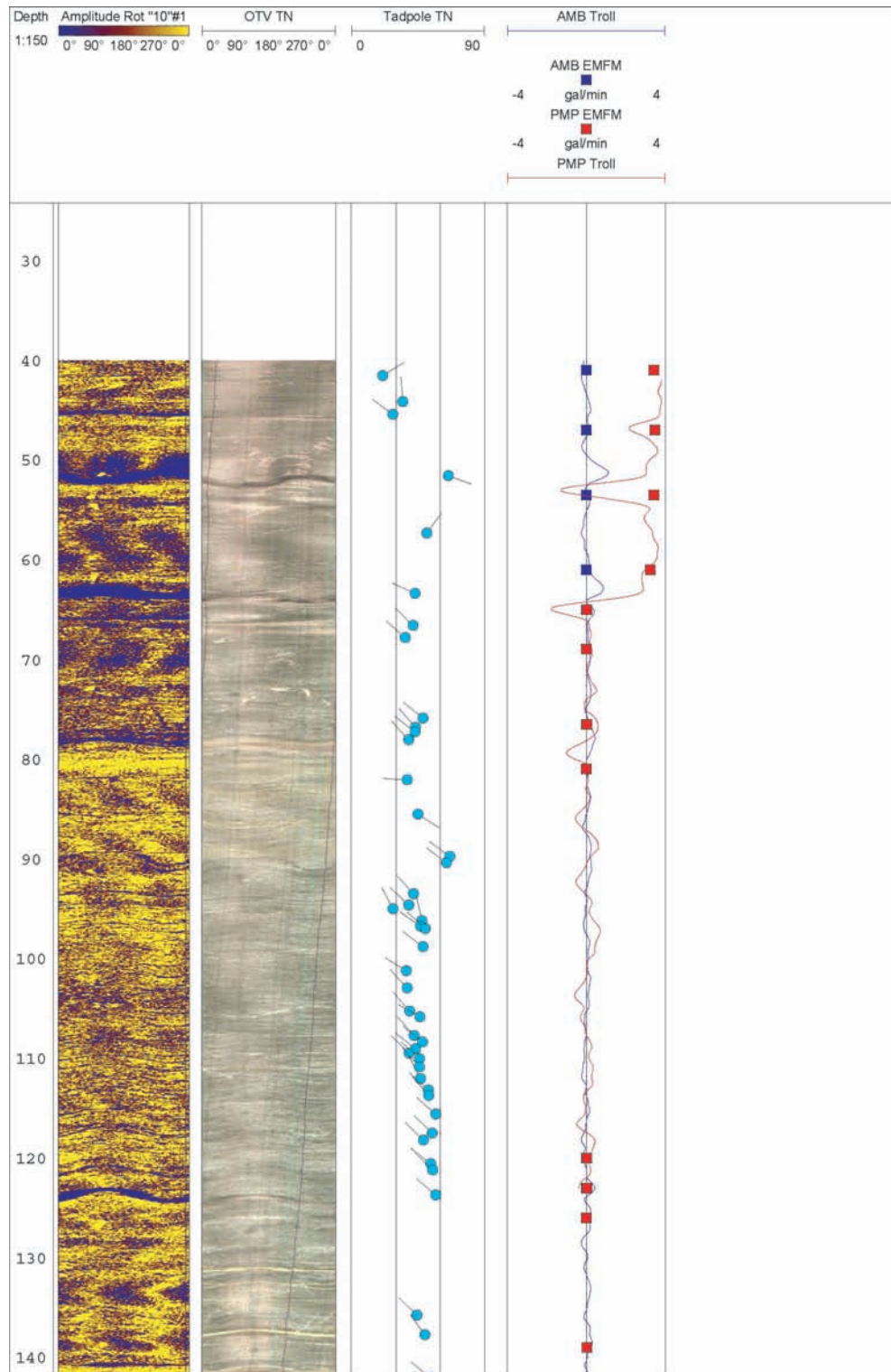
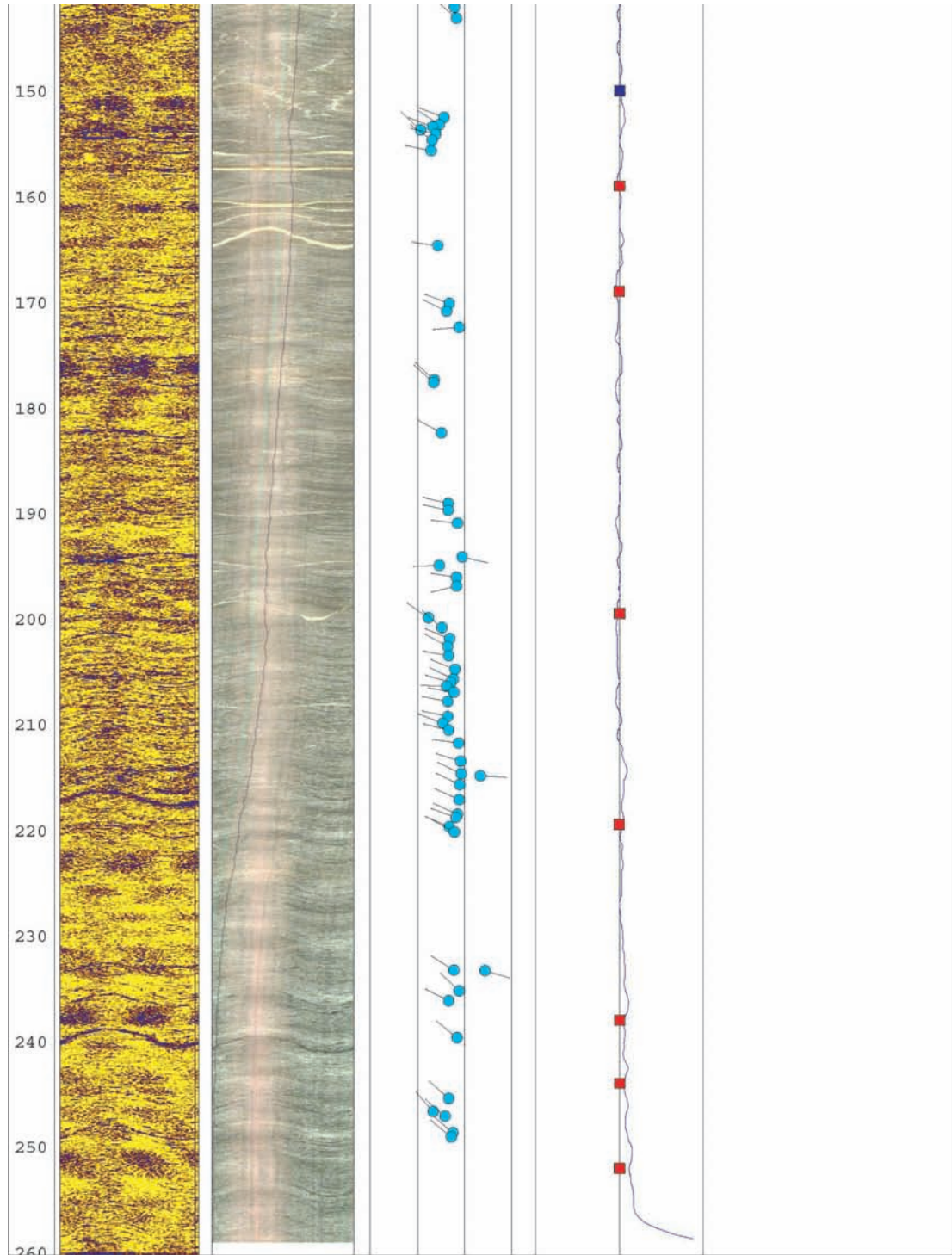


Appendix 2b: Optical televiewer, acoustic televiewer, and heat-pulse flow meter logs for wells at the USGS Leetown Science Center, Leetown, West Virginia

2 Hydrogeology and Water Quality of the Leetown Area, West Virginia

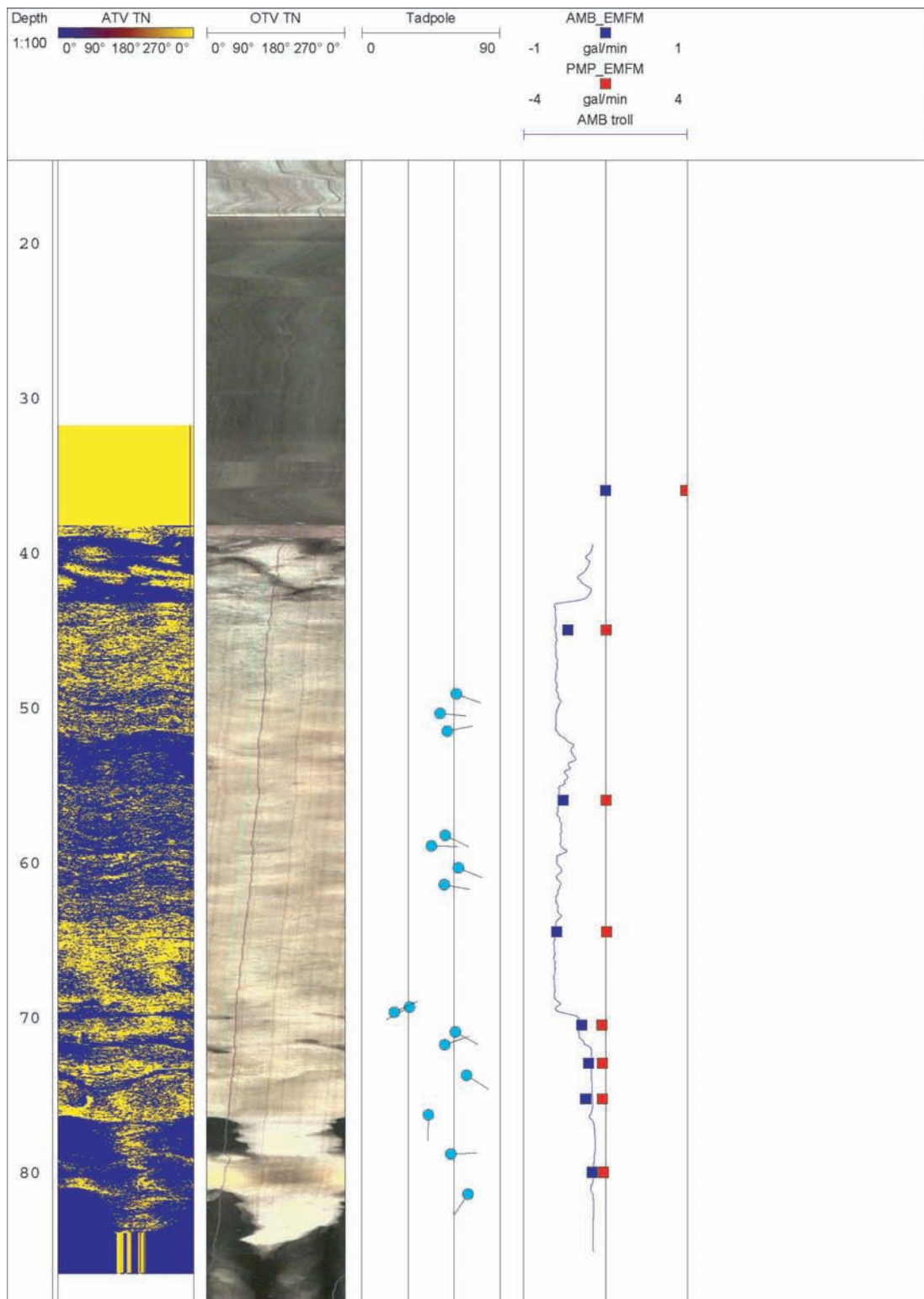


Appendix 2b fig. 1 Optical television, acoustic television, and heat pulse flow meter logs for well Jef-0589 (anticline well) in the Leetown area, West Virginia.
[See first page of appendix 2b for explanation of symbols used in the borehole logs]

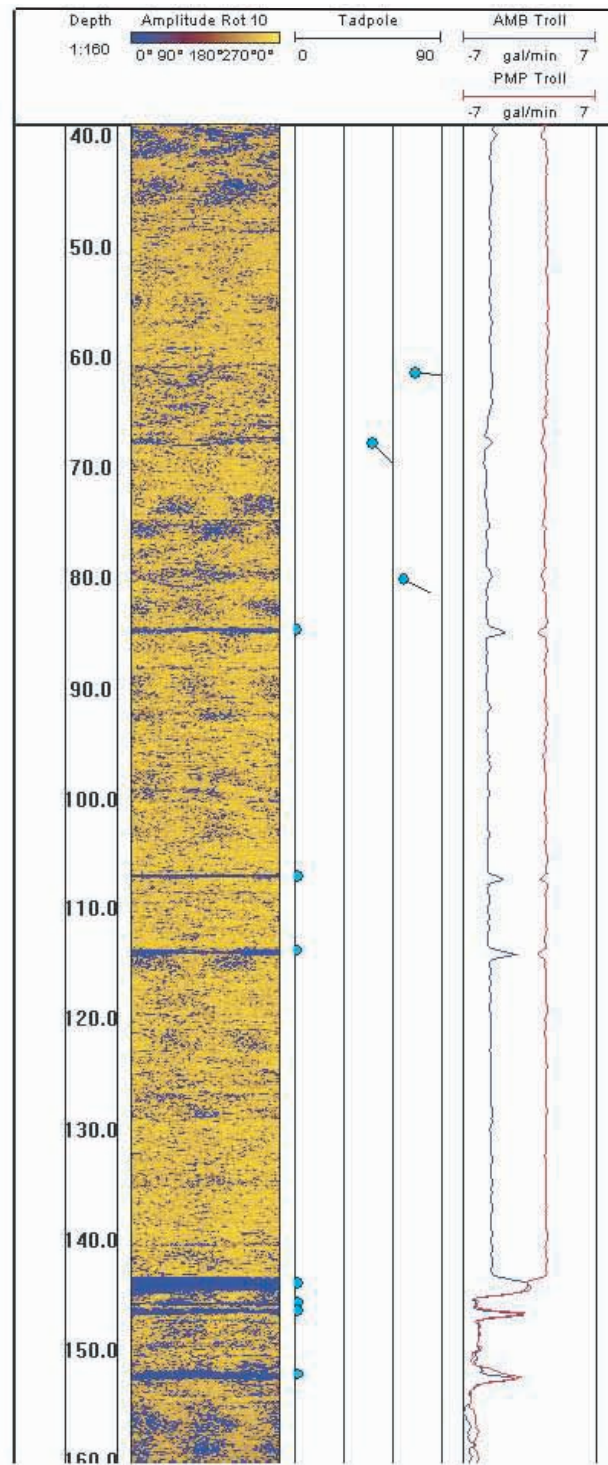


Appendix 2b fig. 1 (Continued) Optical televiewer, acoustic televiewer, and heat pulse flow meter logs for well Jef-0589 (anticline well) in the Leetown area, West Virginia.
[See first page of appendix 2b for explanation of symbols used in the borehole logs]

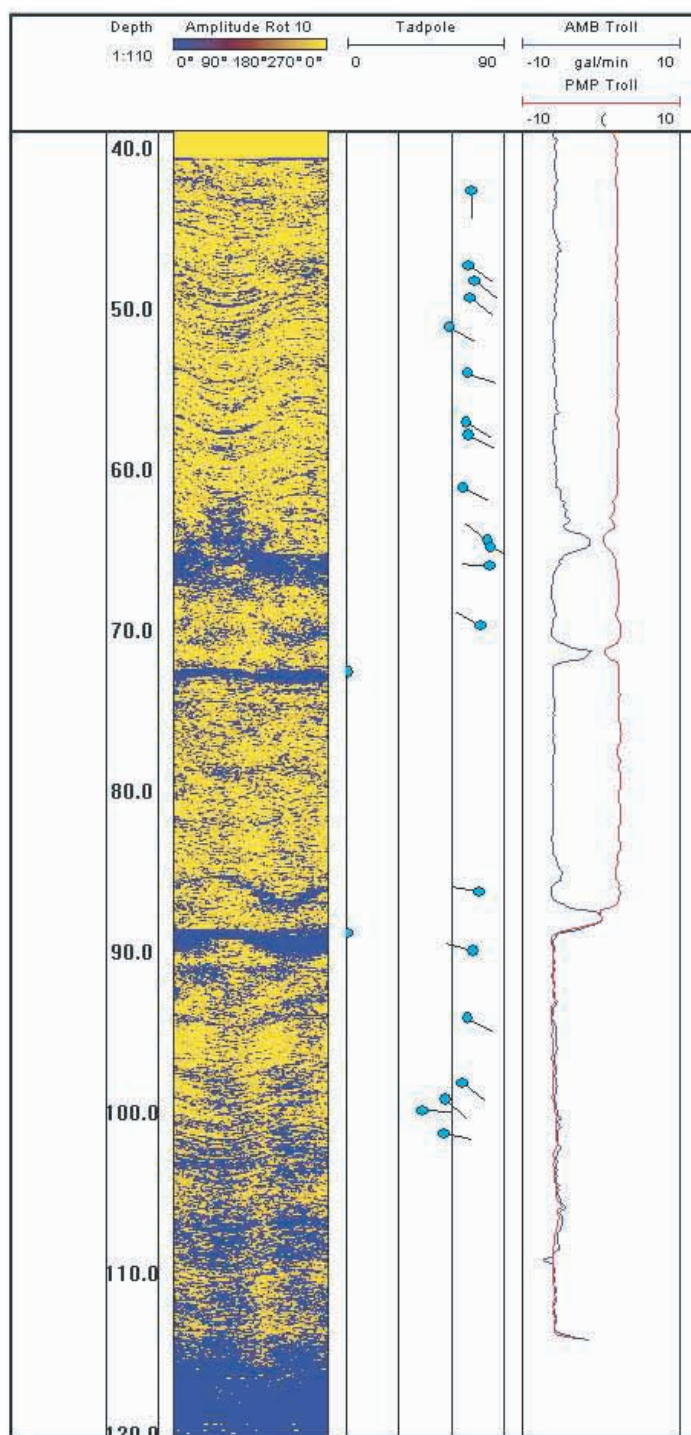
4 Hydrogeology and Water Quality of the Leetown Area, West Virginia



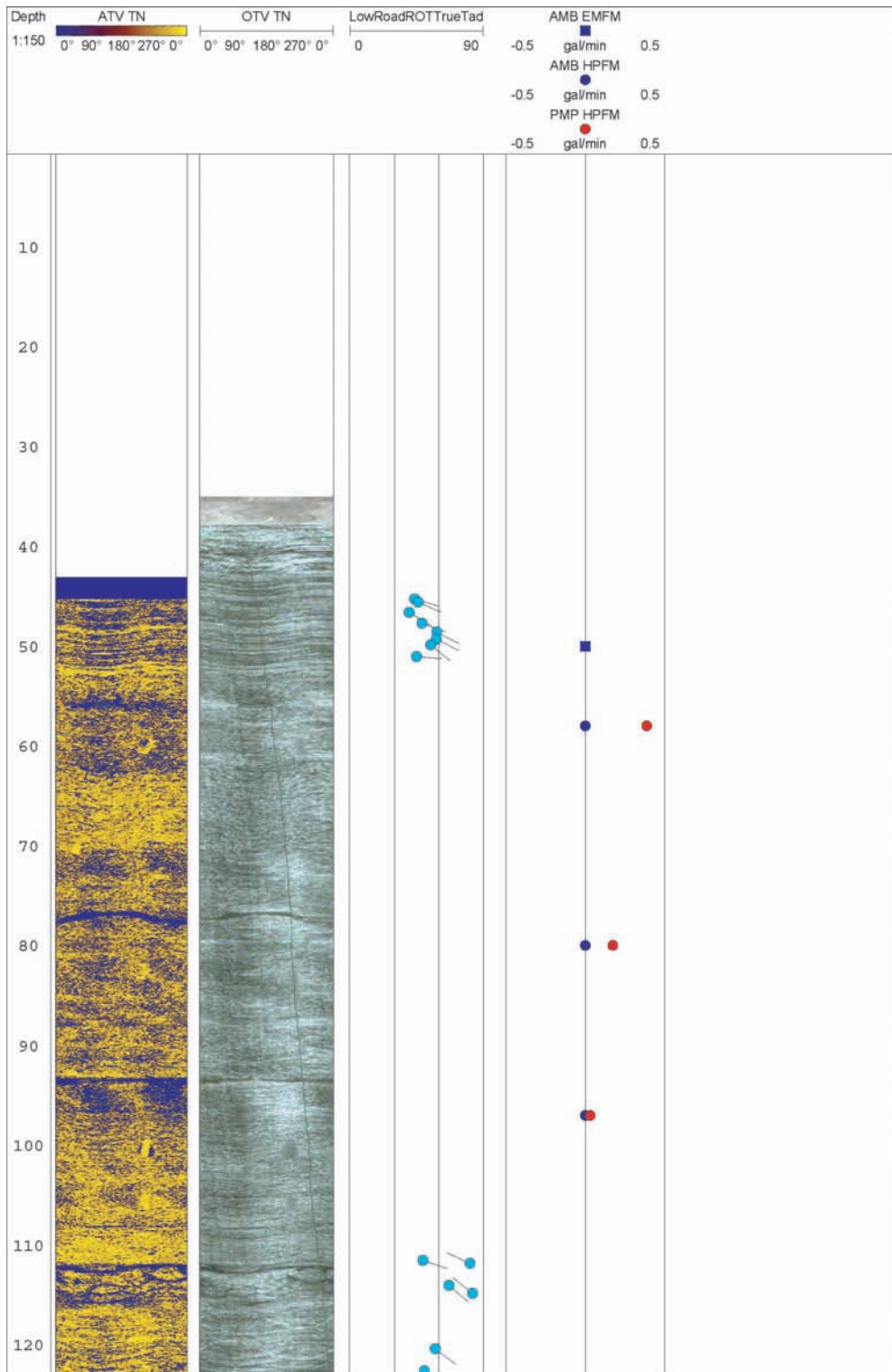
Appendix 2b fig. 2 Optical televiewer, acoustic televiewer, and heat pulse flow meter logs for well Jef-0590 (ball field well) in the Leetown area, West Virginia.
[See first page of appendix 2b for explanation of symbols used in the borehole logs]



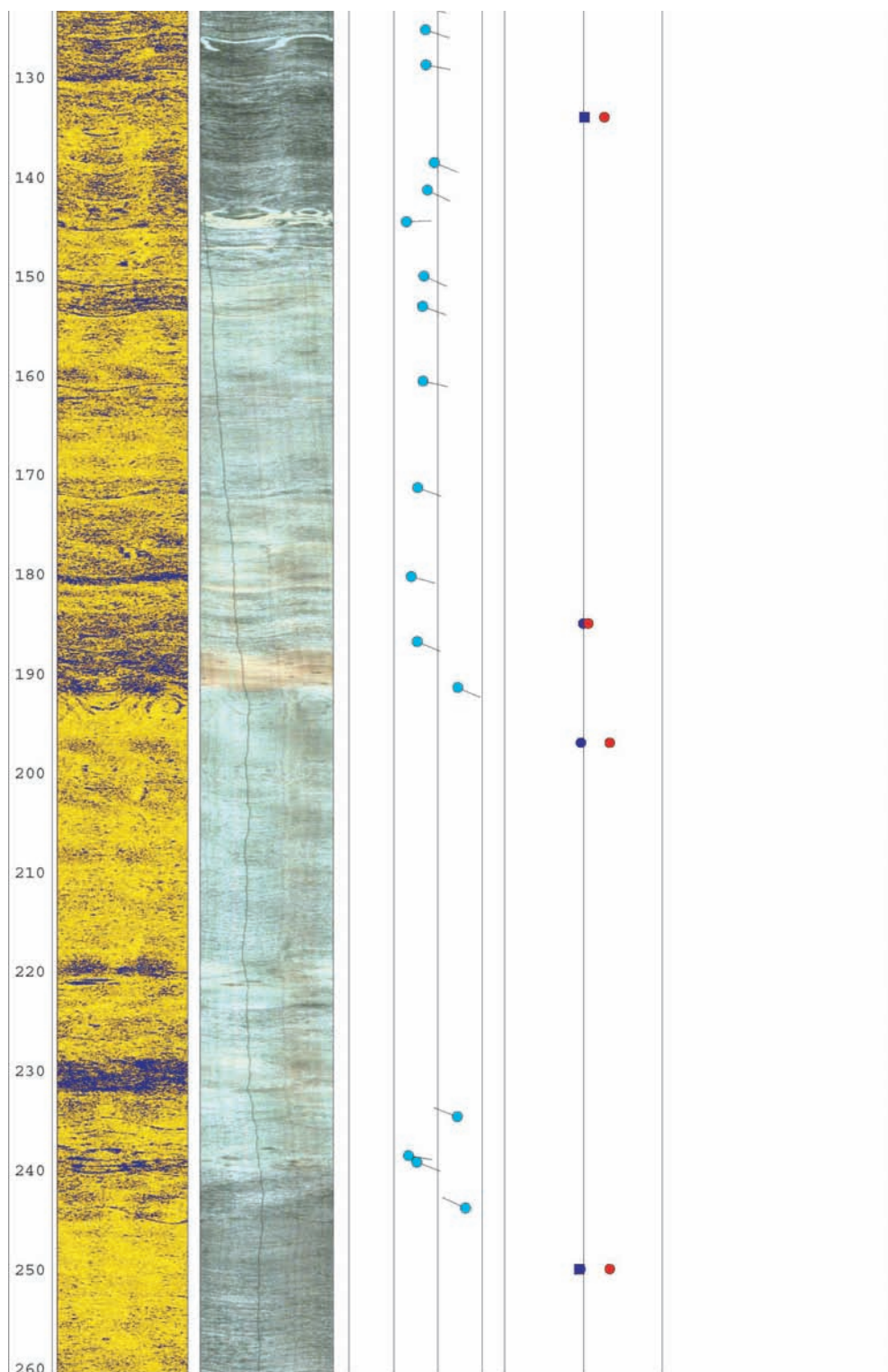
Appendix 2b fig. 3 Optical televiewer, acoustic televiewer, and heat pulse flow meter logs for well Jef-0752 (new Dodson farm well) in the Leetown area, West Virginia [See first page of appendix 2b for explanation of symbols used in the borehole logs]



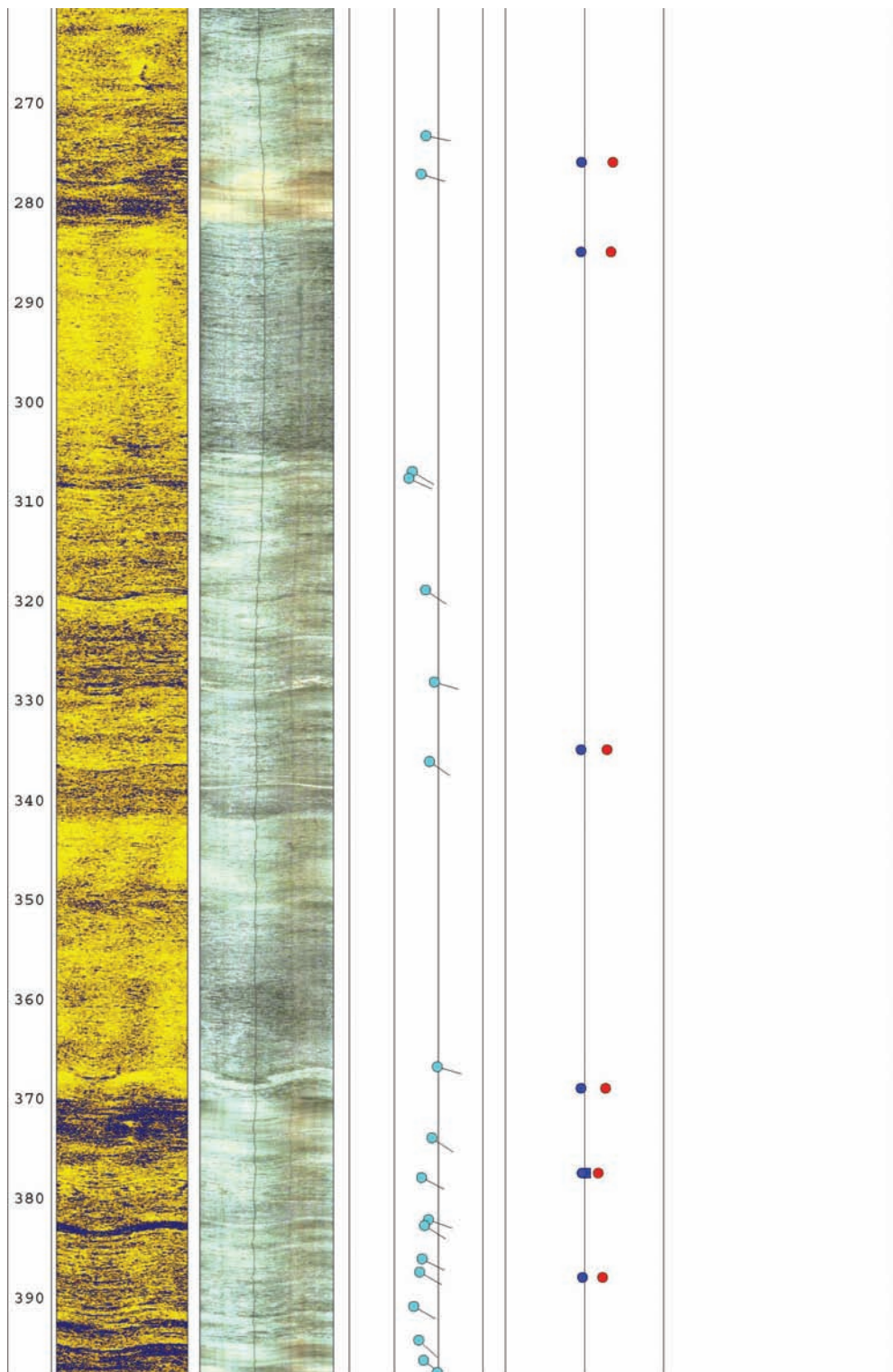
Appendix 2b fig. 4 Optical televiewer, acoustic televiewer, and heat pulse flow meter logs for well Jef-0753 (new Keyser farm well) in the Leetown area, West Virginia [See first page of appendix 2b for explanation of symbols used in the borehole logs]



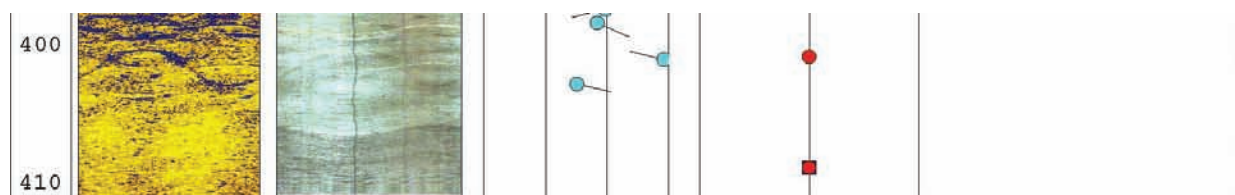
Appendix 2b fig. 5 Optical televiewer, acoustic televiewer, and heat pulse flow meter logs for well Jef-0587 (low road well) in the Leetown area, West Virginia
[See first page of appendix 2b for explanation of symbols used in the borehole logs]



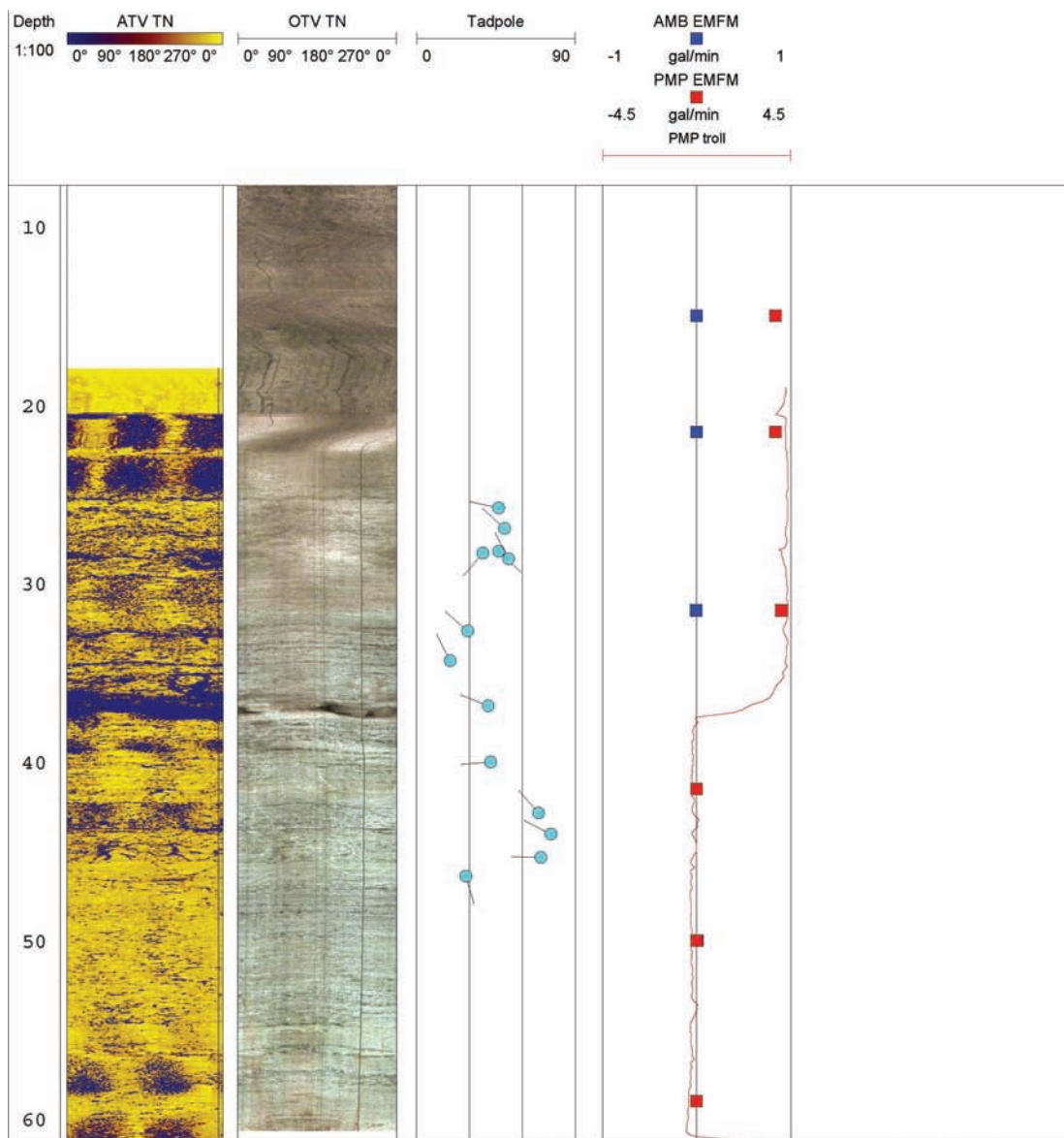
Appendix 2b fig. 5 (Continued) Optical televiewer, acoustic televiewer, and heat pulse flow meter logs for well Jef-0587 (low road well) in the Leetown area, West Virginia [See first page of appendix 2b for explanation of symbols used in the borehole logs]



Appendix 2b fig. 5. (Continued) Optical televiewer, acoustic televiewer, and heat pulse flow meter logs for well Jef-0587 (low road well) in the Leetown area, West Virginia [See first page of appendix 2b for explanation of symbols used in the borehole logs]

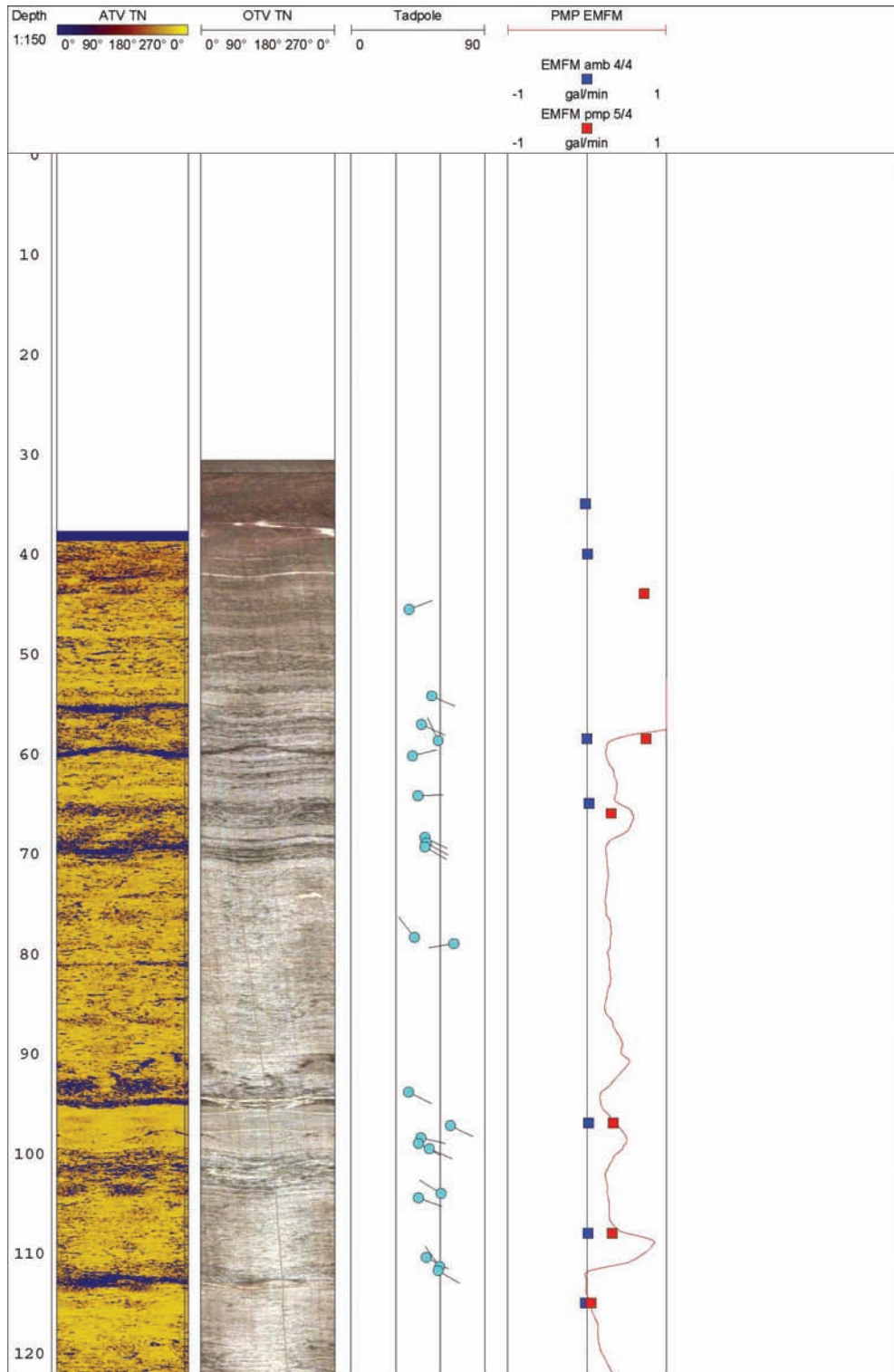


Appendix 2b fig. 5. (Continued) Optical televiewer, acoustic televiewer, and heat pulse flow meter logs for well Jef-0587 (low road well) in the Leetown area, West Virginia
[See first page of appendix 2b for explanation of symbols used in the borehole logs]

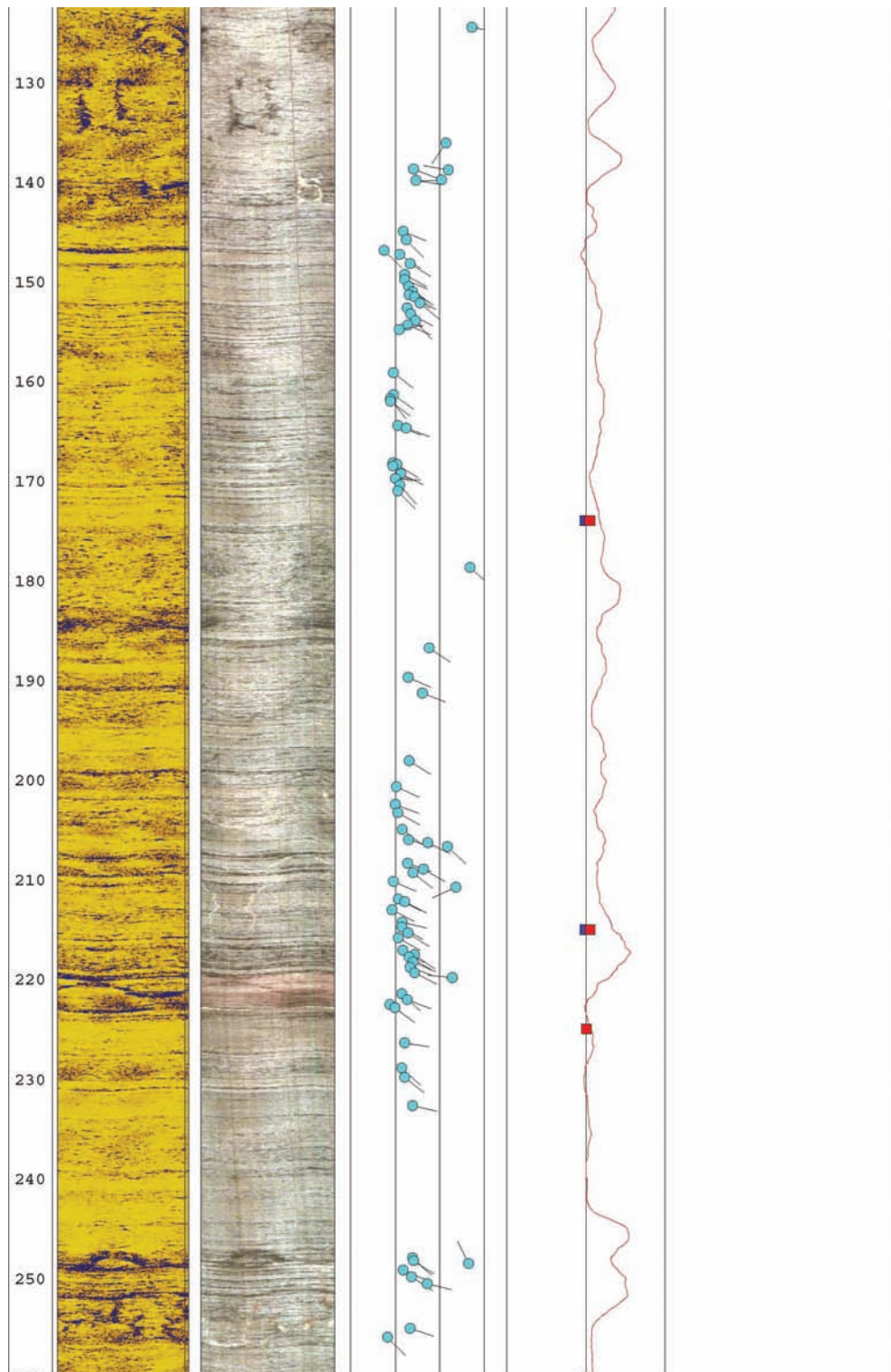


Appendix 2b fig. 6 Optical televiewer, acoustic televiewer, and heat pulse flow meter logs for well Jef-0602 (old Dodson farm well) in the Leetown area, West Virginia
 [See first page of appendix 2b for explanation of symbols used in the borehole logs]

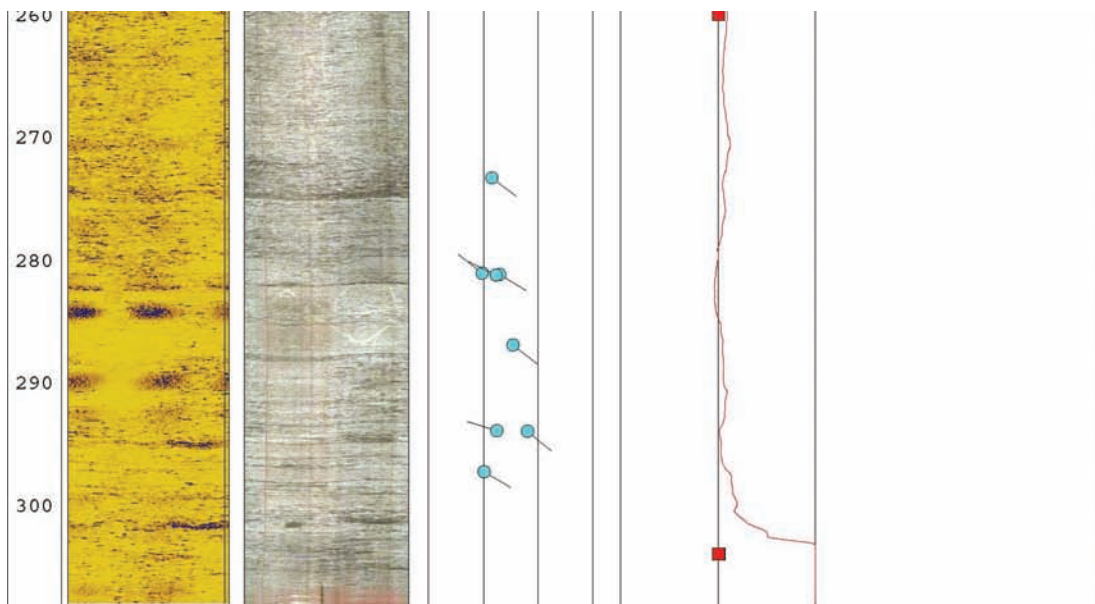
12 Hydrogeology and Water Quality of the Leetown Area, West Virginia



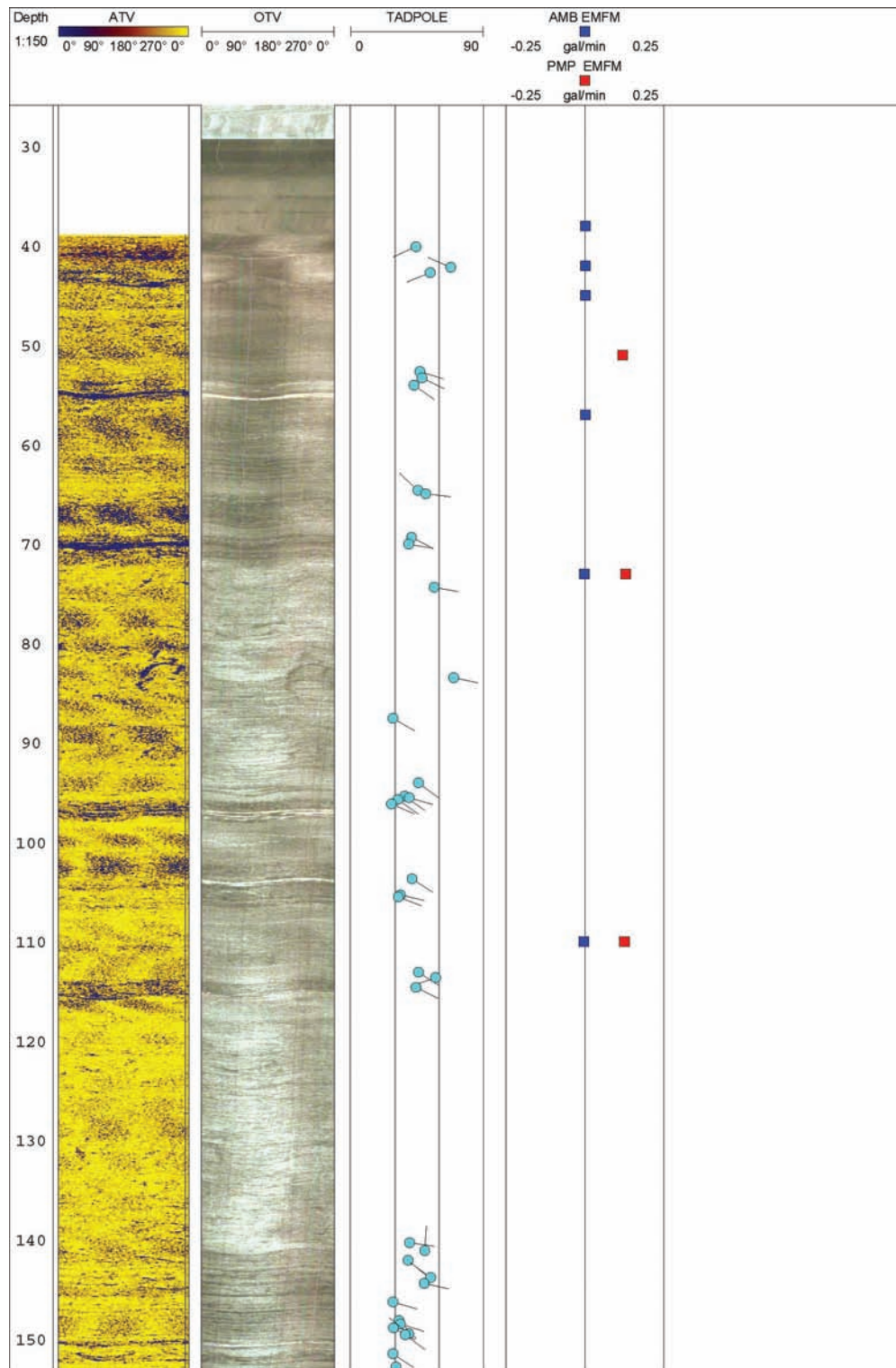
Appendix 2b fig. 7 Optical televiewer, acoustic televiewer, and heat pulse flow meter logs for well Jef-0601 (stable A well) in the Leetown area, West Virginia
[See first page of appendix 2b for explanation of symbols used in the borehole logs]



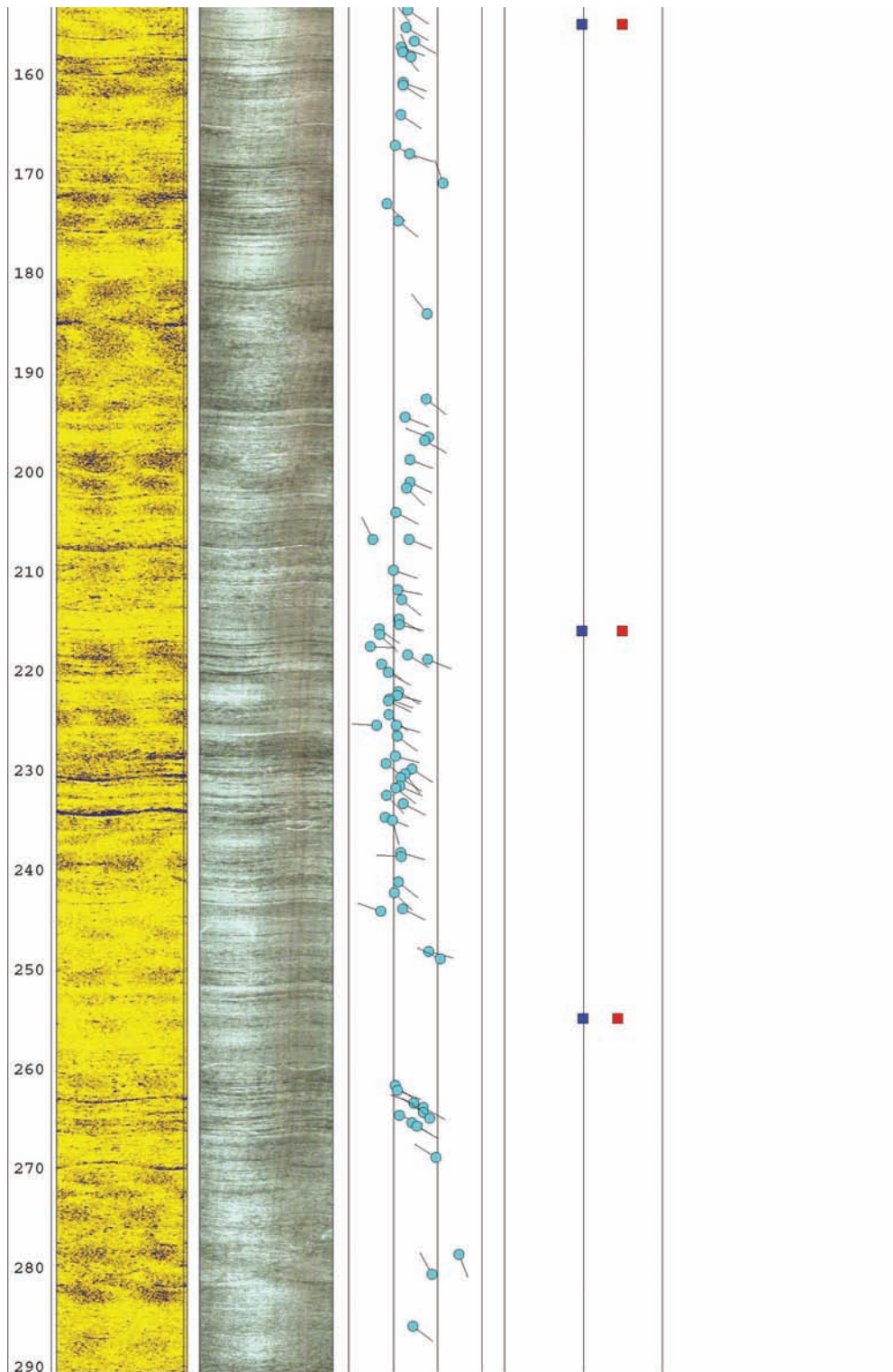
Appendix 2b fig. 7 (Continued) Optical televiewer, acoustic televiewer, and heat pulse flow meter logs for well Jef-0601 (stable A well) in the Leetown area, West Virginia [See first page of appendix 2b for explanation of symbols used in the borehole logs]



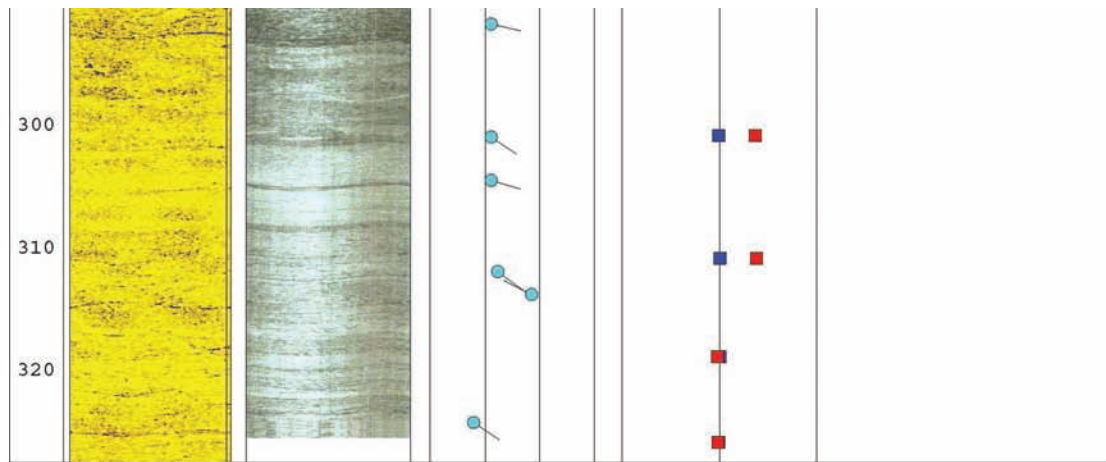
Appendix 2b fig. 7 (Continued) Optical televiewer, acoustic televiewer, and heat pulse flow meter logs for well Jef-0601 (stable A well) in the Leetown area, West Virginia
[See first page of appendix 2b for explanation of symbols used in the borehole logs]



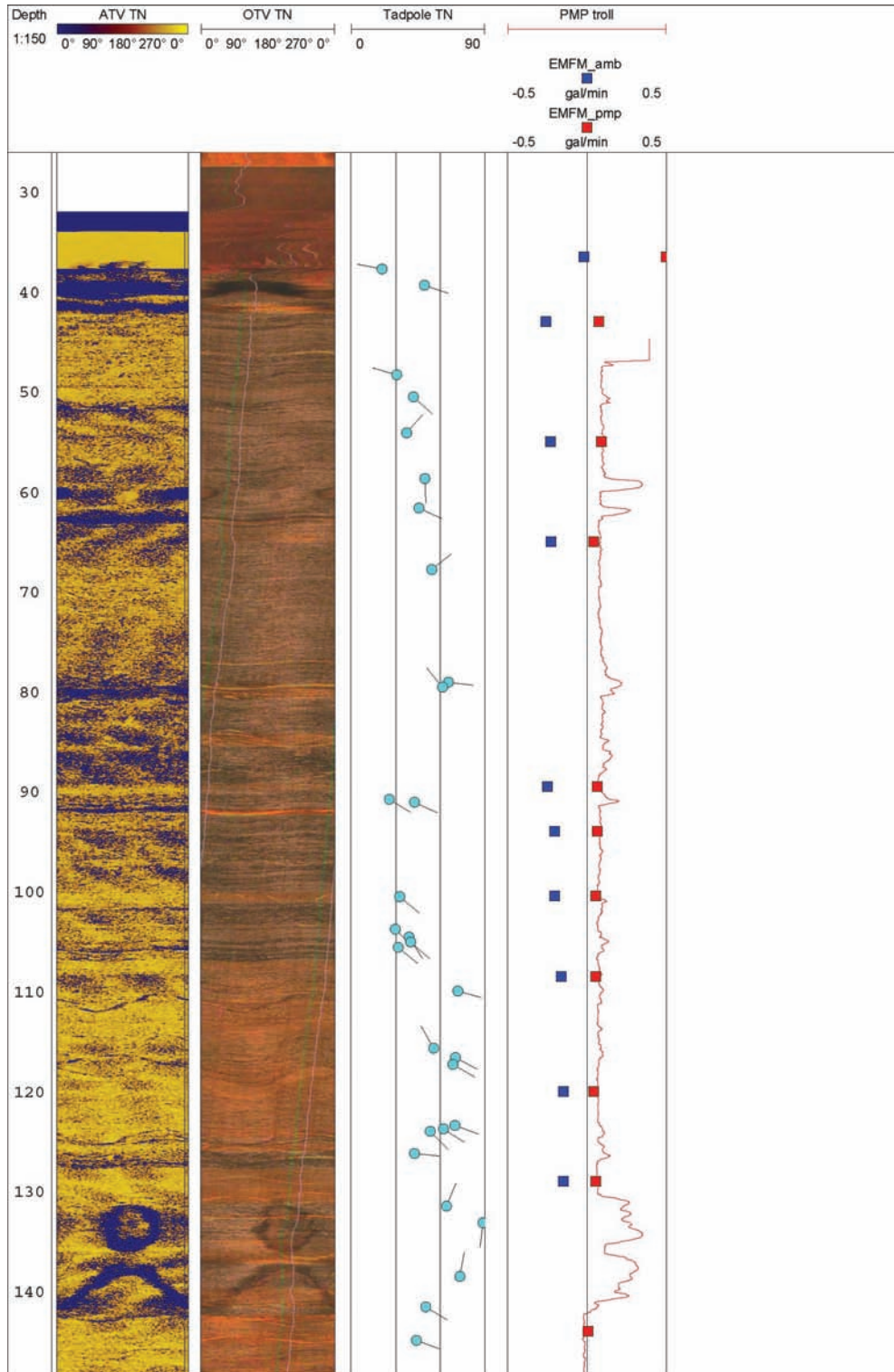
Appendix 2b fig. 8 Optical televiewer, acoustic televiewer, and heat pulse flow meter logs for well Jef-0585 (stable B well) in the Leetown area, West Virginia
 [See first page of appendix 2b for explanation of symbols used in the borehole logs]



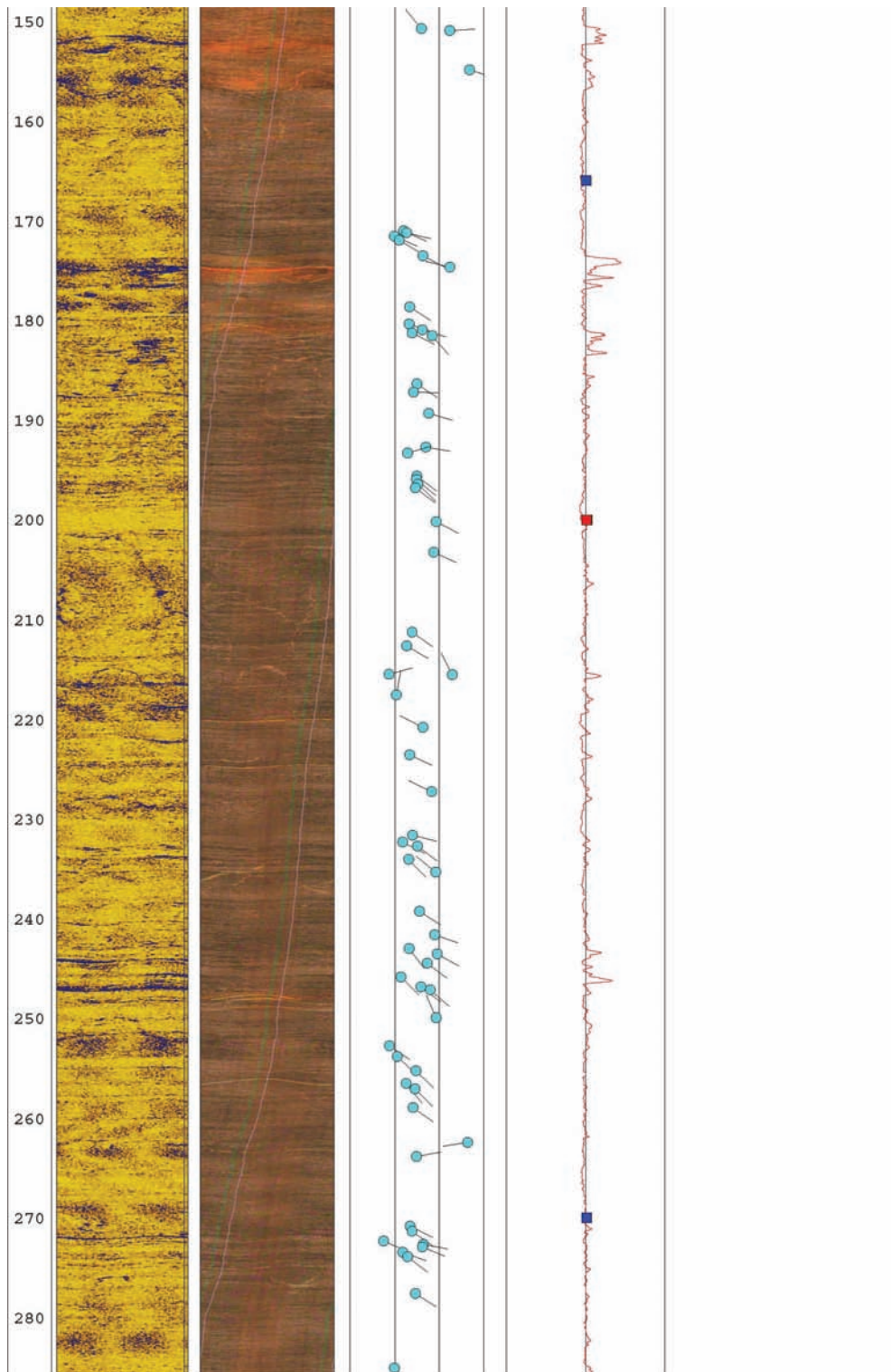
Appendix 2b fig. 8 (Continued) Optical televiewer, acoustic televiewer, and heat pulse flow meter logs for well Jef-0585 (stable B well) in the Leetown area, West Virginia [See first page of appendix 2b for explanation of symbols used in the borehole logs]



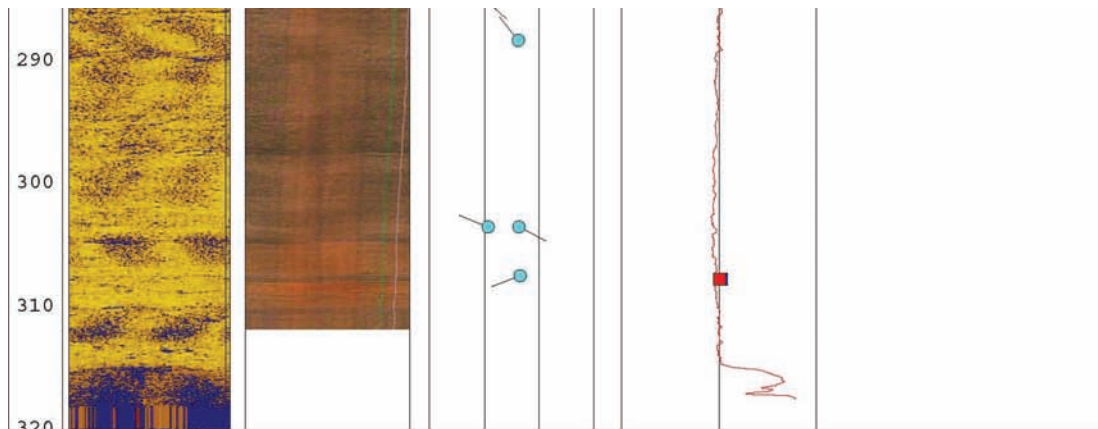
Appendix 2b fig. 8 (Continued) Optical televiwer, acoustic televiwer, and heat pulse flow meter logs for well Jef-0585 (stable B well) at the Leetown Science Center, Leetown, WV [See first page of appendix 2b for explanation of symbols used in the borehole logs]



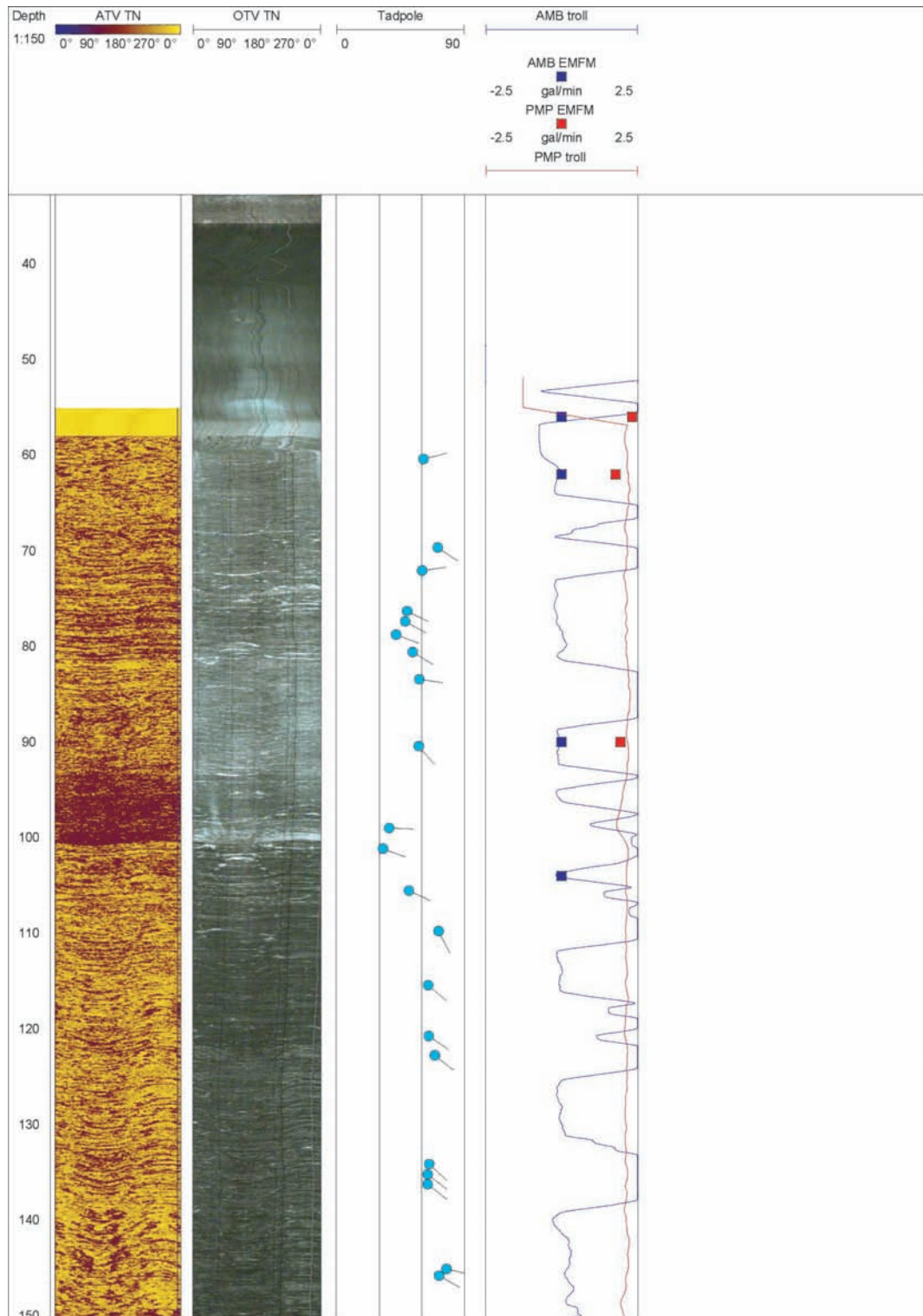
Appendix 2b fig. 9 Optical televiewer, acoustic televiewer, and heat pulse flow meter logs for well Jef-0592 (stable C well) in the Leetown area, West Virginia
[See first page of appendix 2b for explanation of symbols used in the borehole logs]



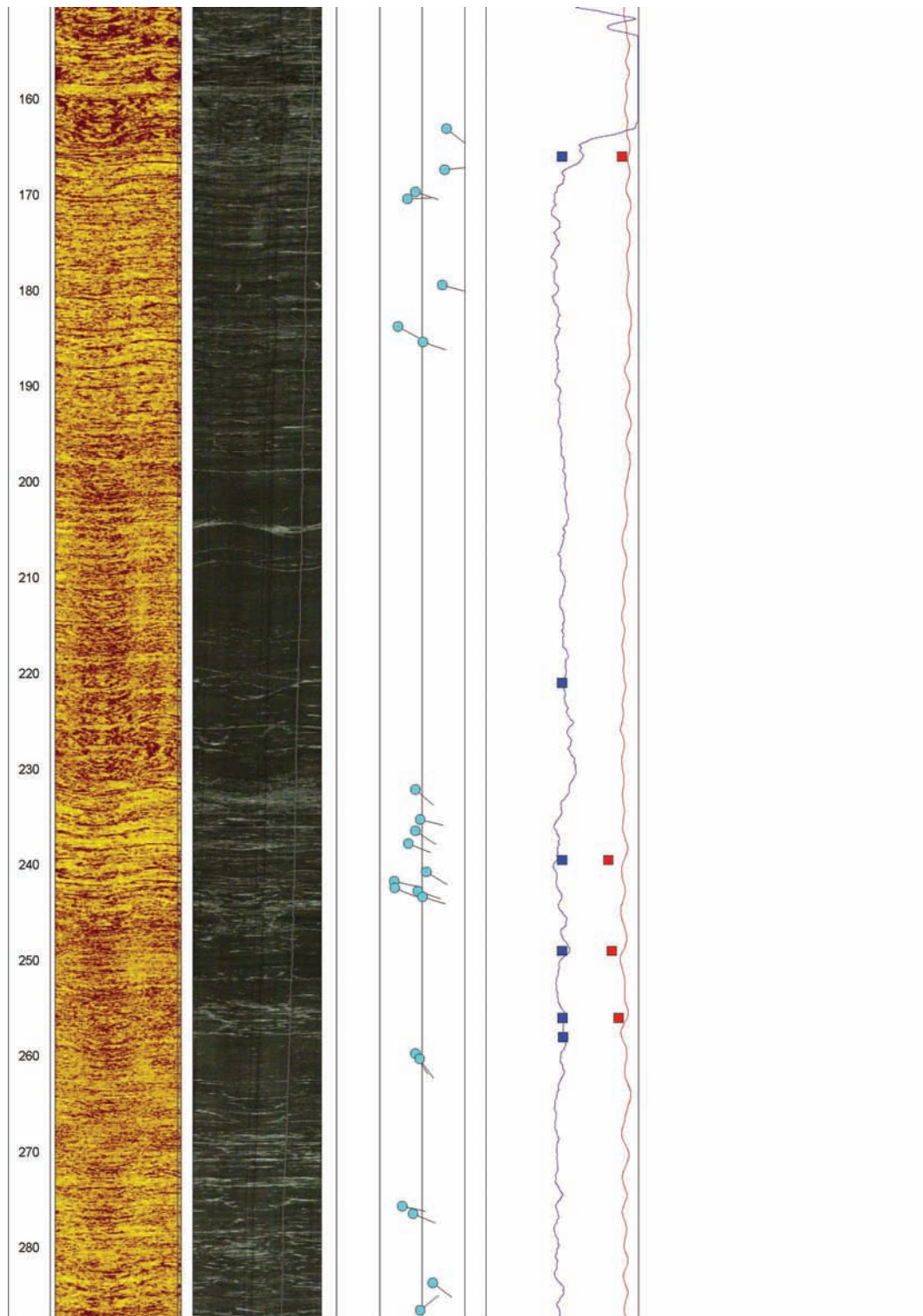
Appendix 2b fig. 9 (Continued) Optical televiewer, acoustic televiewer, and heat pulse flow meter logs for well Jef-0592 (stable C well) in the Leetown area, West Virginia [See first page of appendix 2b for explanation of symbols used in the borehole logs]



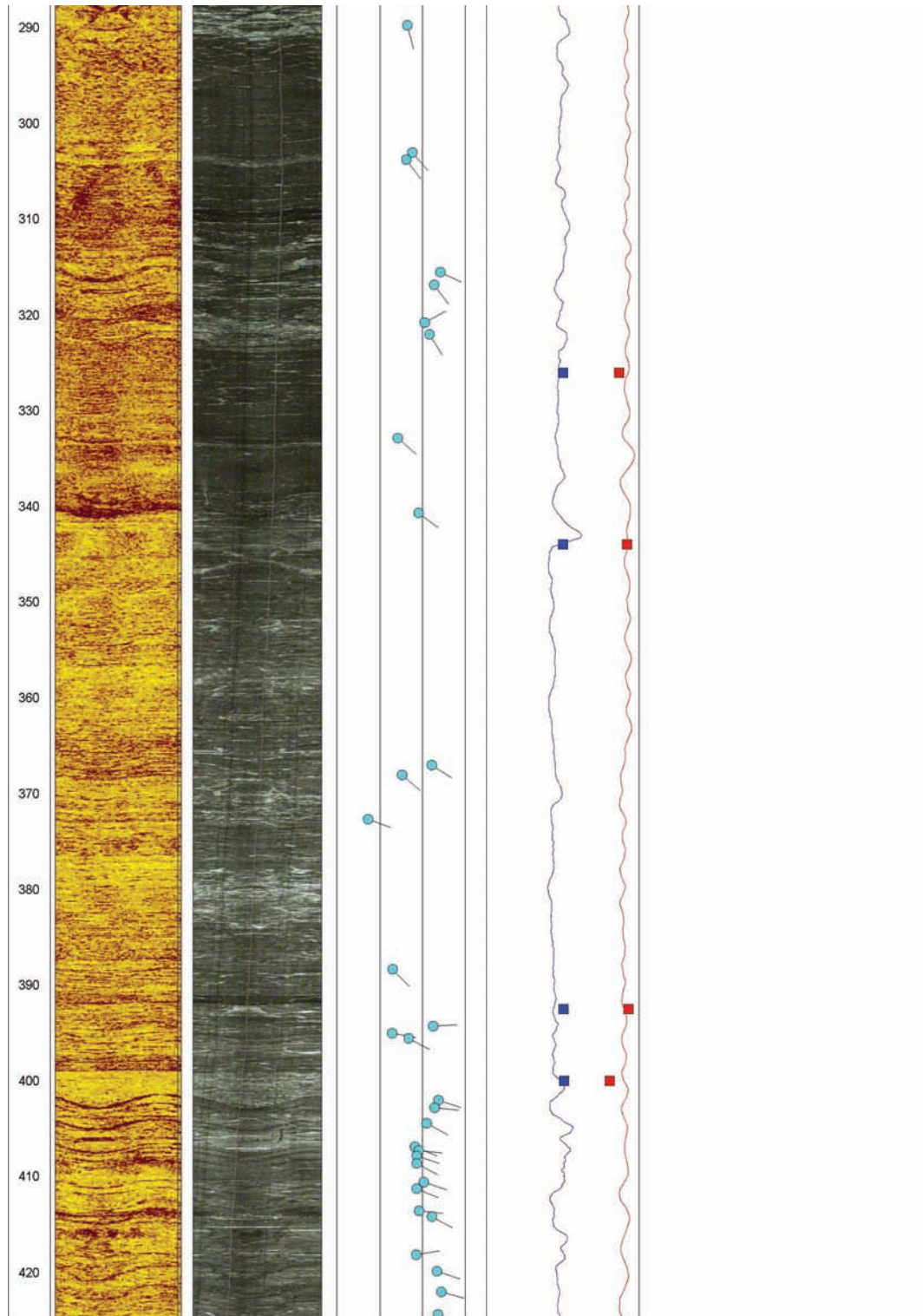
Appendix 2b fig. 9 (Continued) Optical televiwer, acoustic televiwer, and heat pulse flow meter logs for well Jef-0592 (stable C well) in the Leetown area, West Virginia [See first page of appendix 2b for explanation of symbols used in the borehole logs]



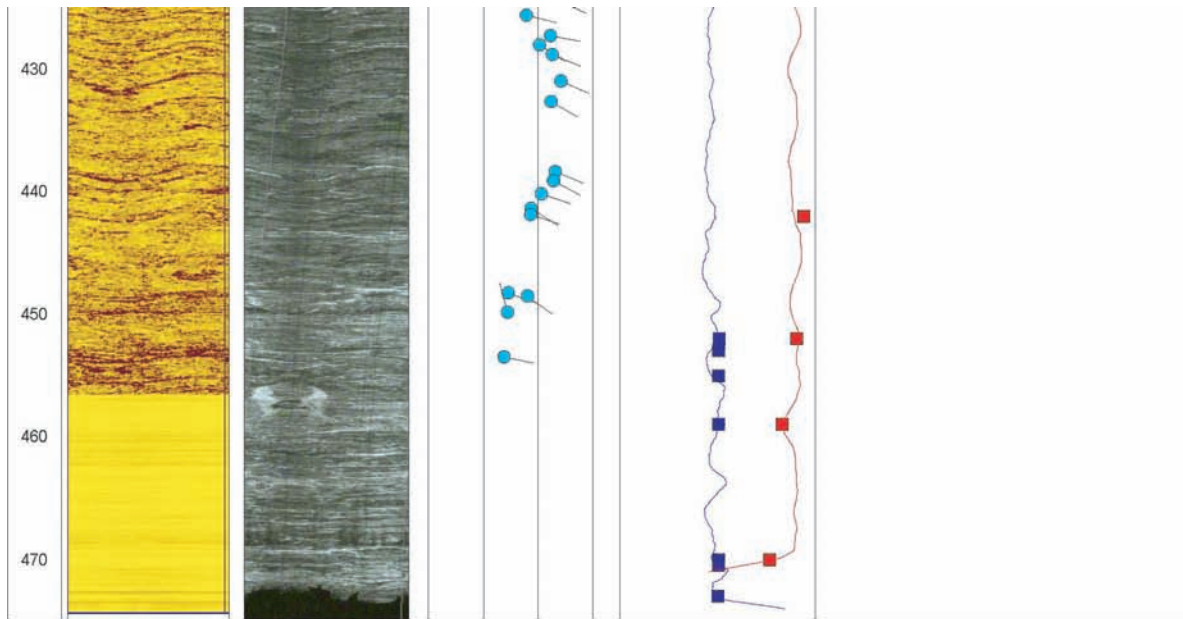
Appendix 2b fig. 10 Optical televiewer, acoustic televiewer, and heat pulse flow meter logs for well Jef-0603 (USDA sulfur well) in the Leetown area, West Virginia
 [See first page of appendix 2b for explanation of symbols used in the borehole logs]



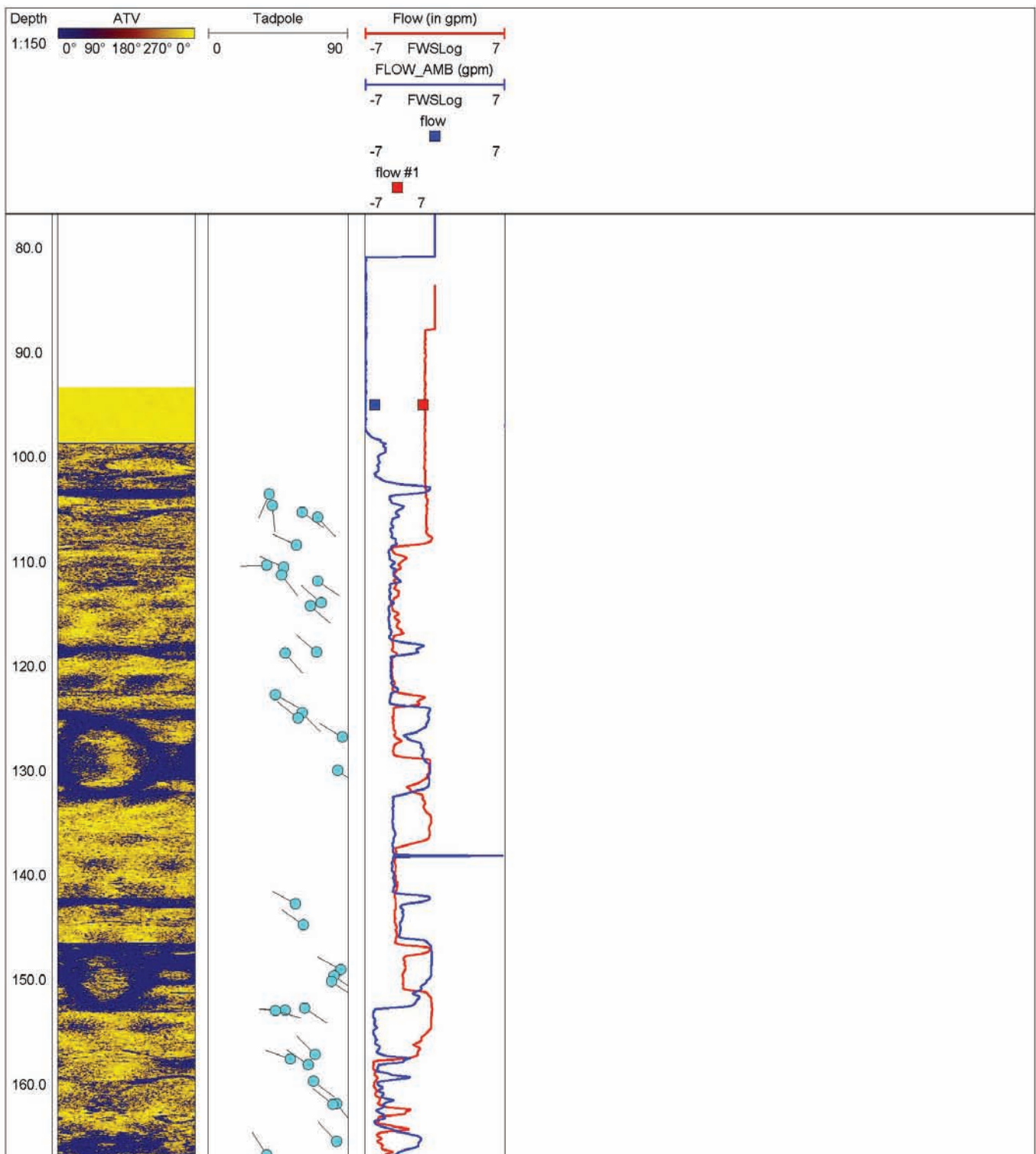
Appendix 2b fig. 10 (Continued) Optical televiewer, acoustic televiewer, and heat pulse flow meter logs for well Jef-0603 (USDA sulfur well) in the Leetown area, West Virginia [See first page of appendix 2b for explanation of symbols used in the borehole logs]



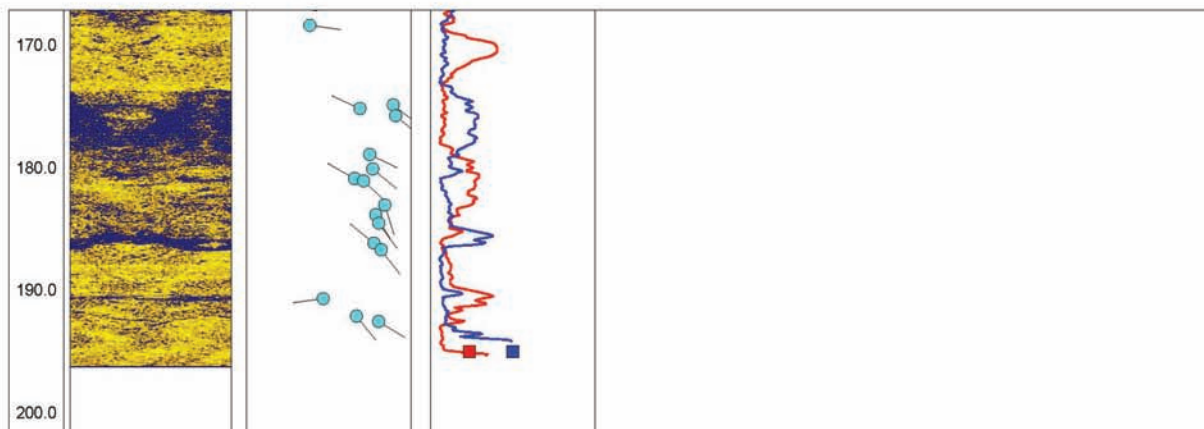
Appendix 2b fig. 10 (Continued) Optical televiewer, acoustic televiewer, and heat pulse flow meter logs for well Jef-0603 (USDA sulfur well) in the Leetown area, West Virginia [See first page of appendix 2b for explanation of symbols used in the borehole logs]



Appendix 2b fig. 10 (Continued) Optical televiewer, acoustic televiewer, and heat pulse flow meter logs for well Jef-0603 (USDA sulfur well) in the Leetown area, West Virginia [See first page of appendix 2b for explanation of symbols used in the borehole logs]



Appendix 2b fig. 11 Optical televiewer, acoustic televiewer, and heat pulse flow meter logs for well Jef-0586 (USDA fault well) in the Leetown area, West Virginia
 [See first page of appendix 2b for explanation of symbols used in the borehole logs]



Appendix 2b fig. 11 (Continued) Optical televiewer, acoustic televiewer, and heat pulse flow meter logs for well Jef-0586 (USDA fault well) in the Leetown area, West Virginia [See first page of appendix 2b for explanation of symbols used in the borehole logs]