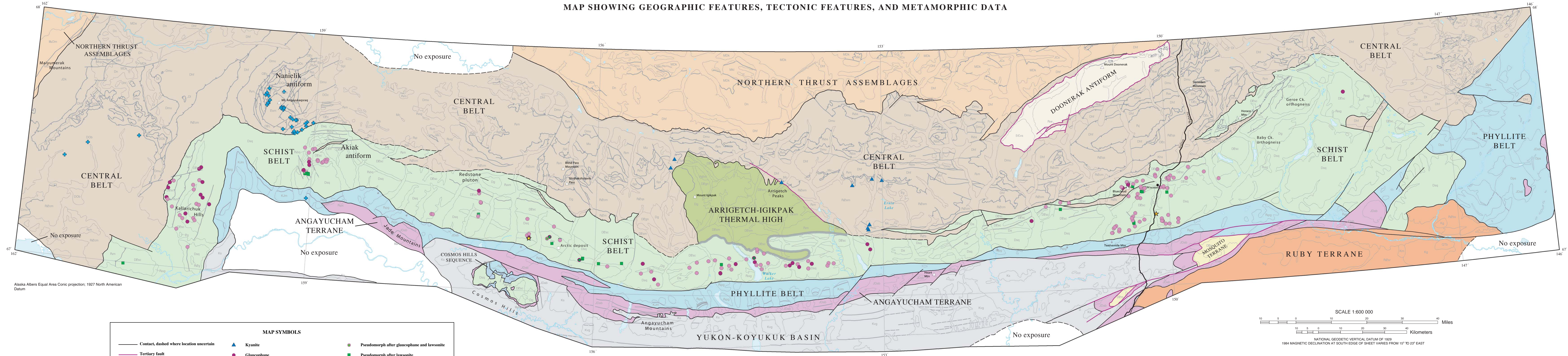
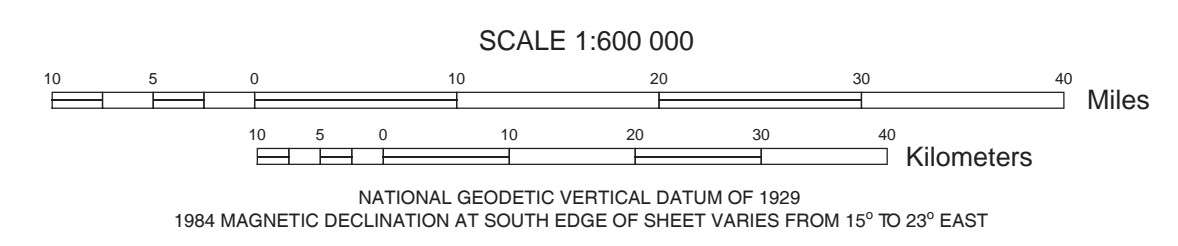


MAP SHOWING GEOGRAPHIC FEATURES, TECTONIC FEATURES, AND METAMORPHIC DATA



Alaska Albers Equal Area Conic projection; 1927 North American Datum

MAP SYMBOLS			
— Contact, dashed where location uncertain	▲ Kyanite	● Pseudomorph after glaucophane and lawsonite	
— Tertiary fault	● Glaucophane	■ Pseudomorph after lawsonite	
— Metamorphic transition	● Pseudomorph after glaucophane	★ Jadeite	
⊕ Crossite	● Glaucophane and pseudomorph after lawsonite	★ Eclogite	



**BEDROCK GEOLOGIC MAP OF THE SOUTHERN BROOKS RANGE, ALASKA  
AND ACCOMPANYING CONODONT DATA**

By  
**Alison B. Till, Julie A. Dumoulin, Anita G. Harris, Thomas E. Moore, Heather A. Bleick, and Benjamin R. Siwiec**

2008

Any use of trade, firm, or product names is for descriptive purposes only and does not imply endorsement by the U.S. Government.  
This map was printed on an electronic plotter directly from digital files. Dimensional calibration may vary between electronic plotters and between X and Y dimensions on the same plotter, and paper may change size due to atmospheric conditions; therefore, scale and proportions may not be true on plots of this map.  
For sale by U.S. Geological Survey, Information Services, Box 25286, Federal Center Denver, CO 80225. 1-888-ASK-USGS  
Digital files available on World Wide Web at <http://pubs.usgs.gov/of/2008/1149/>