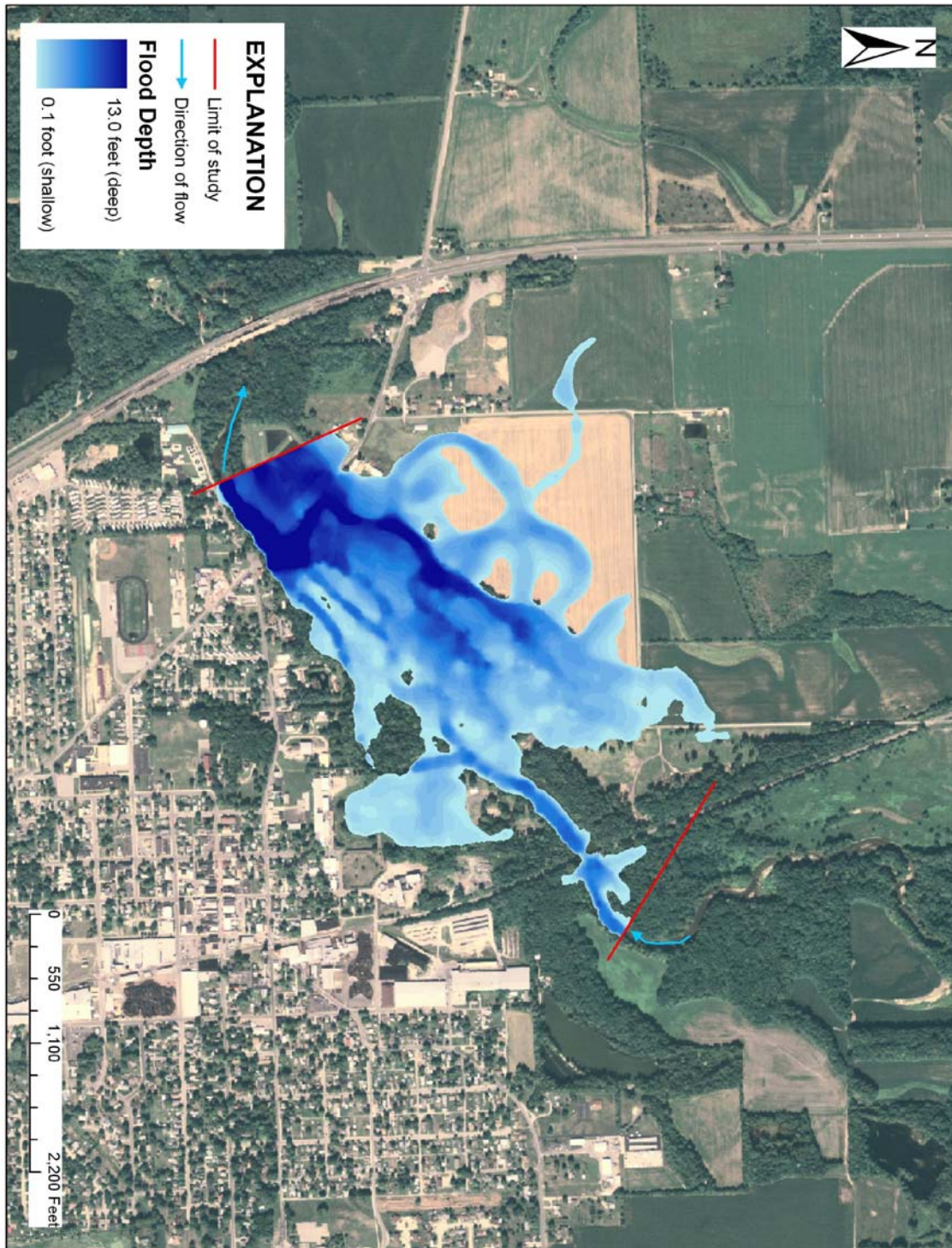
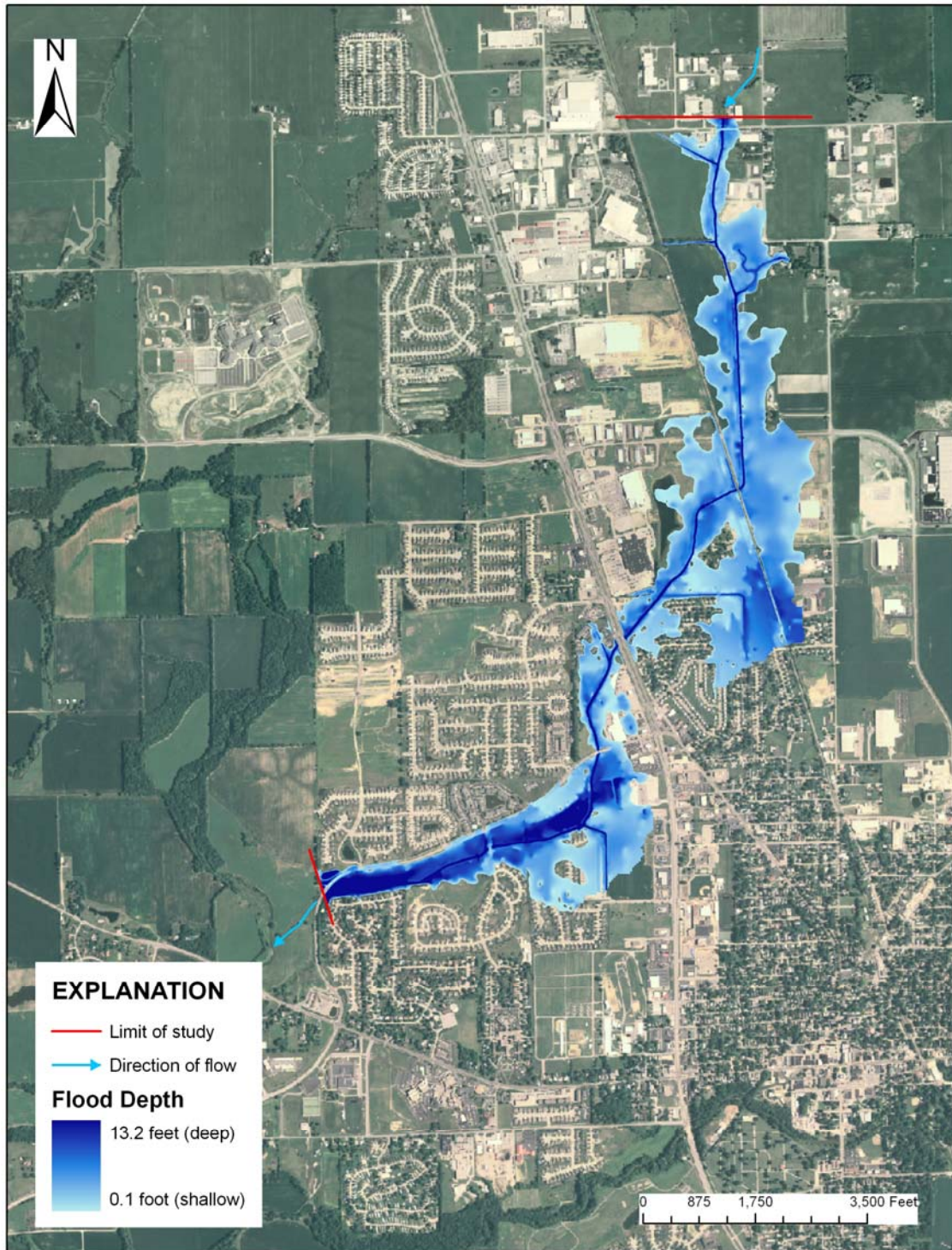


Appendix 2. Flood-Peak Inundation Maps for Selected Communities, Flood of June 7–9, 2008, Indiana

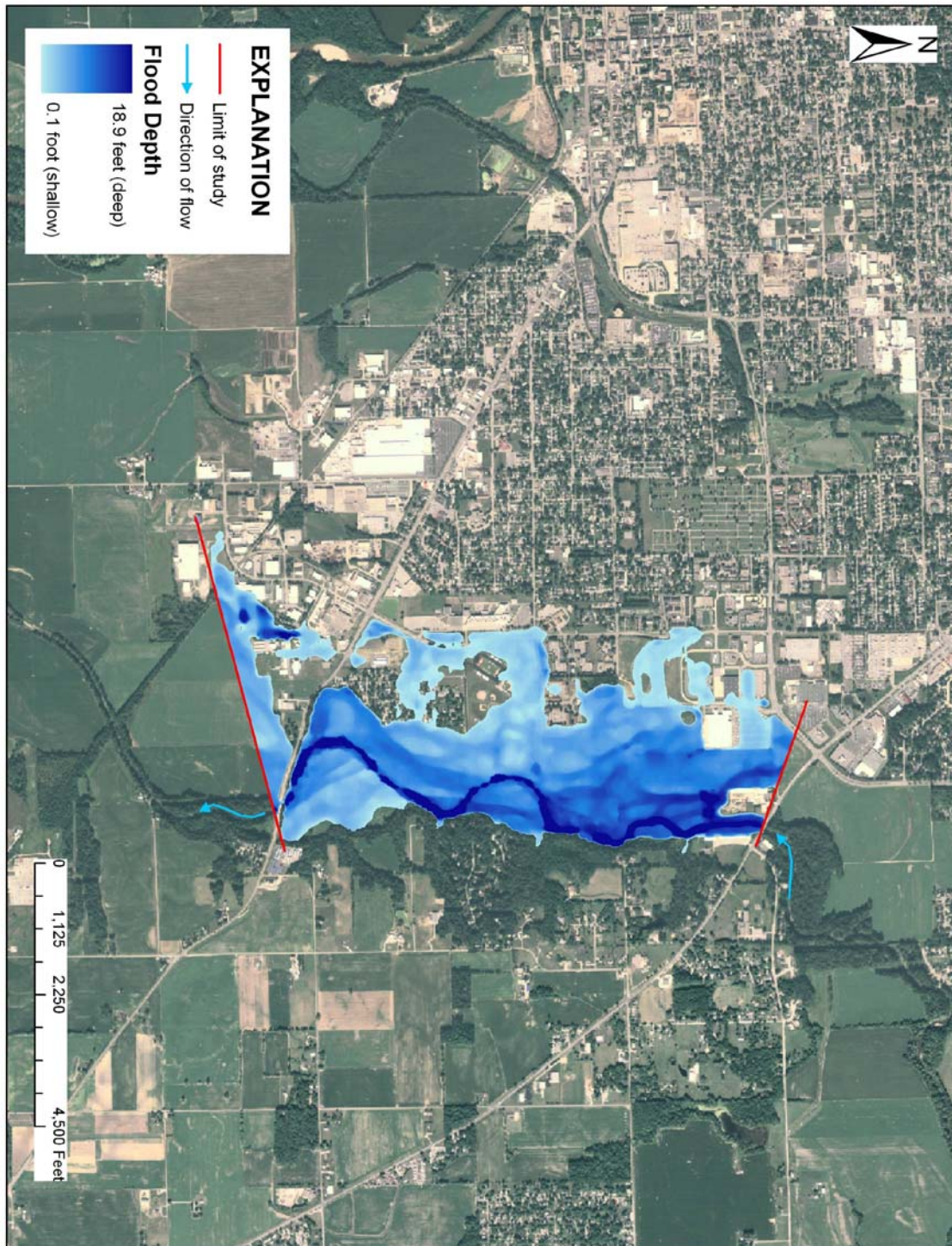
Flood-peak inundation maps are intended to show the approximate depths and extents of floods using aerial photography as a base map. Error sources in the maps can include digital-elevation-data errors, high-water-mark errors, and flood water-surface elevation interpolation errors. Errors can result in inaccuracies in flood extent and depth estimations; thus, the flood extents and depths depicted in the maps should be considered estimates.



Approximate flood-peak extents and depths, flood of June 7–9, 2008, for the Blue River at Edinburg, Indiana. Aerial photograph courtesy of Indiana University, Indiana Spatial Data Portal, 2007 National Agriculture Imagery Program, accessed August 15, 2008, at <http://www.indiana.edu/~gisdata/statewide/07naip.html>



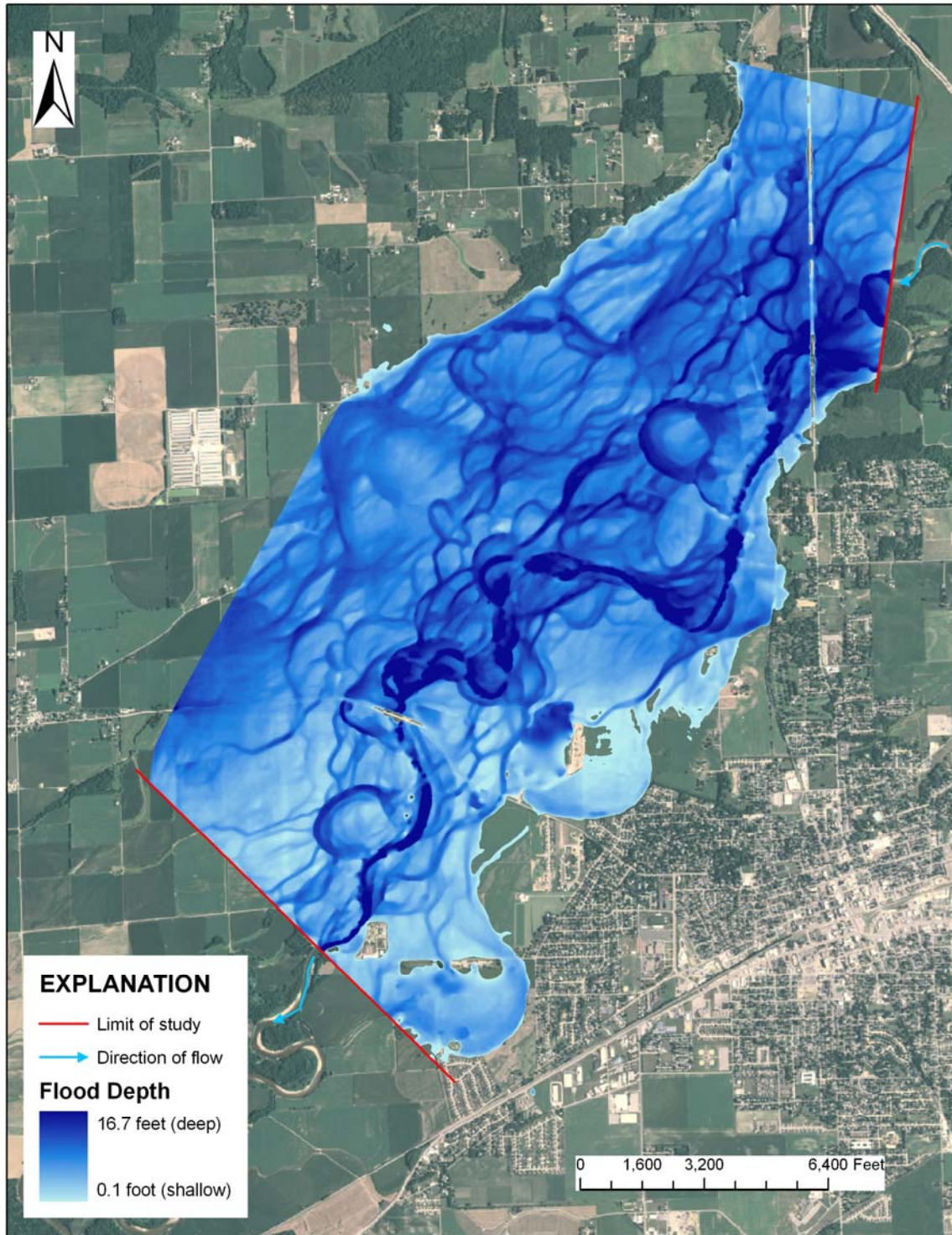
Approximate flood-peak extents and depths, flood of June 7–9, 2008, for Canary Ditch at Franklin, Indiana. Aerial photograph courtesy of Indiana University, Indiana Spatial Data Portal, 2007 National Agriculture Imagery Program, accessed August 15, 2008, at <http://www.indiana.edu/~gisdata/statewide/07naip.html>



Approximate flood-peak extents and depths, flood of June 7–9, 2008, for Clifty Creek at Columbus, Indiana. Aerial photograph courtesy of Indiana University, Indiana Spatial Data Portal, 2007 National Agriculture Imagery Program, accessed August 15, 2008, at <http://www.indiana.edu/~gisdata/statewide/07naip.html>



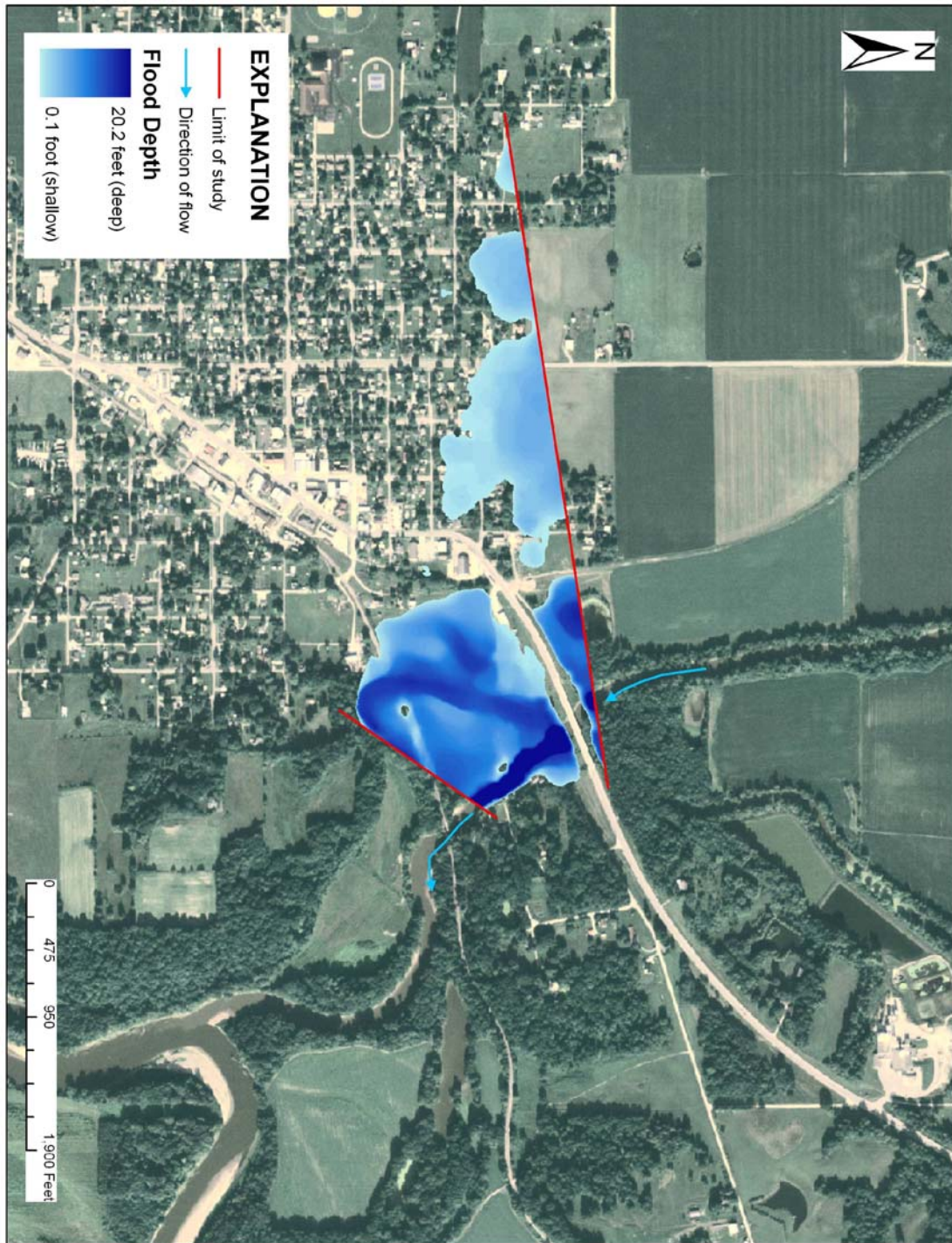
Approximate flood-peak extents and depths, flood of June 7–9, 2008, for East Fork White River at Columbus, Indiana. Aerial photograph courtesy of Indiana University, Indiana Spatial Data Portal, 2007 National Agriculture Imagery Program, accessed August 15, 2008, at <http://www.indiana.edu/~gisdata/statewide/07naip.html>



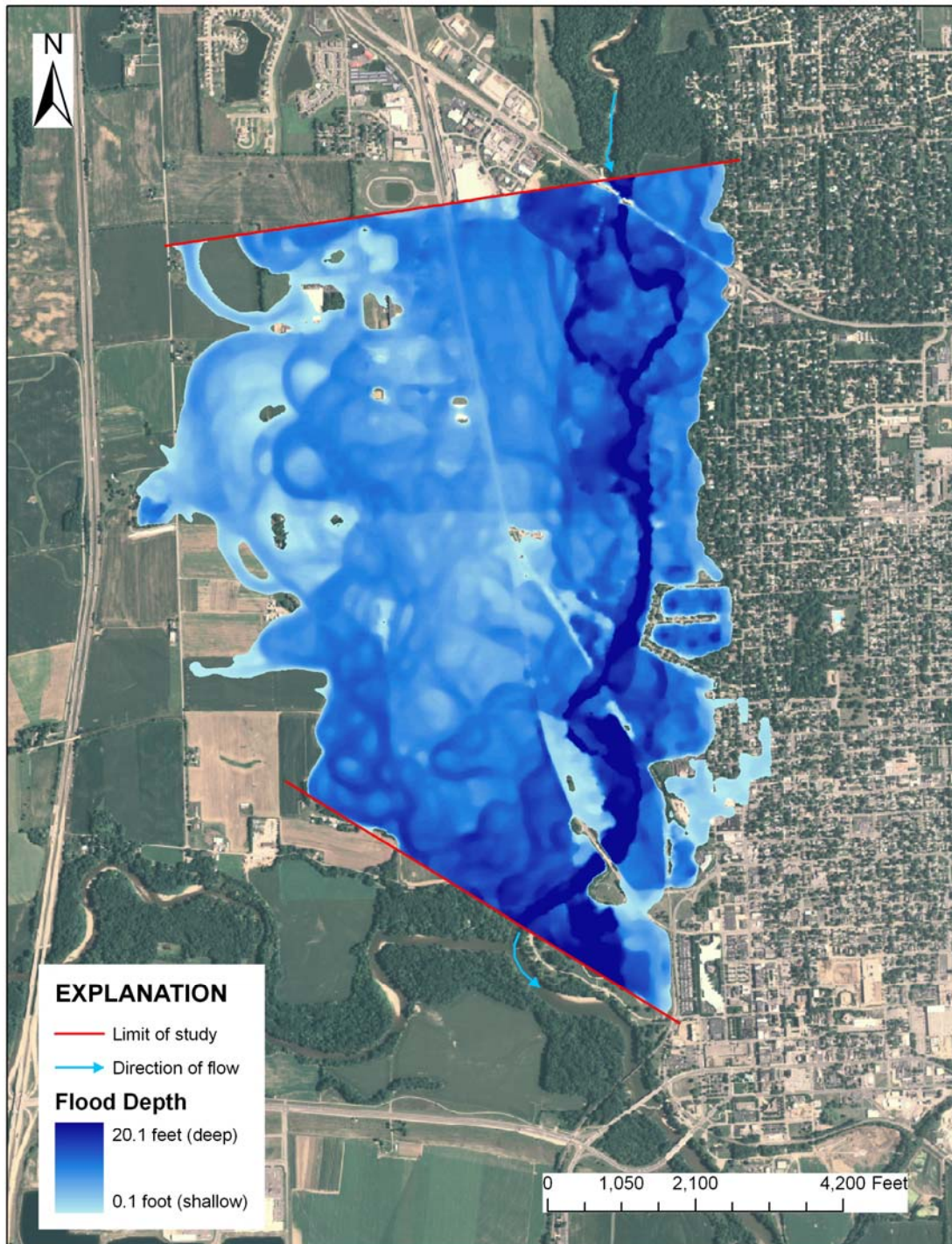
Approximate flood-peak extents and depths, flood of June 7–9, 2008, for East Fork White River at Seymour, Indiana. Aerial photograph courtesy of Indiana University, Indiana Spatial Data Portal, 2007 National Agriculture Imagery Program, accessed August 15, 2008, at <http://www.indiana.edu/~gisdata/statewide/07naip.html>



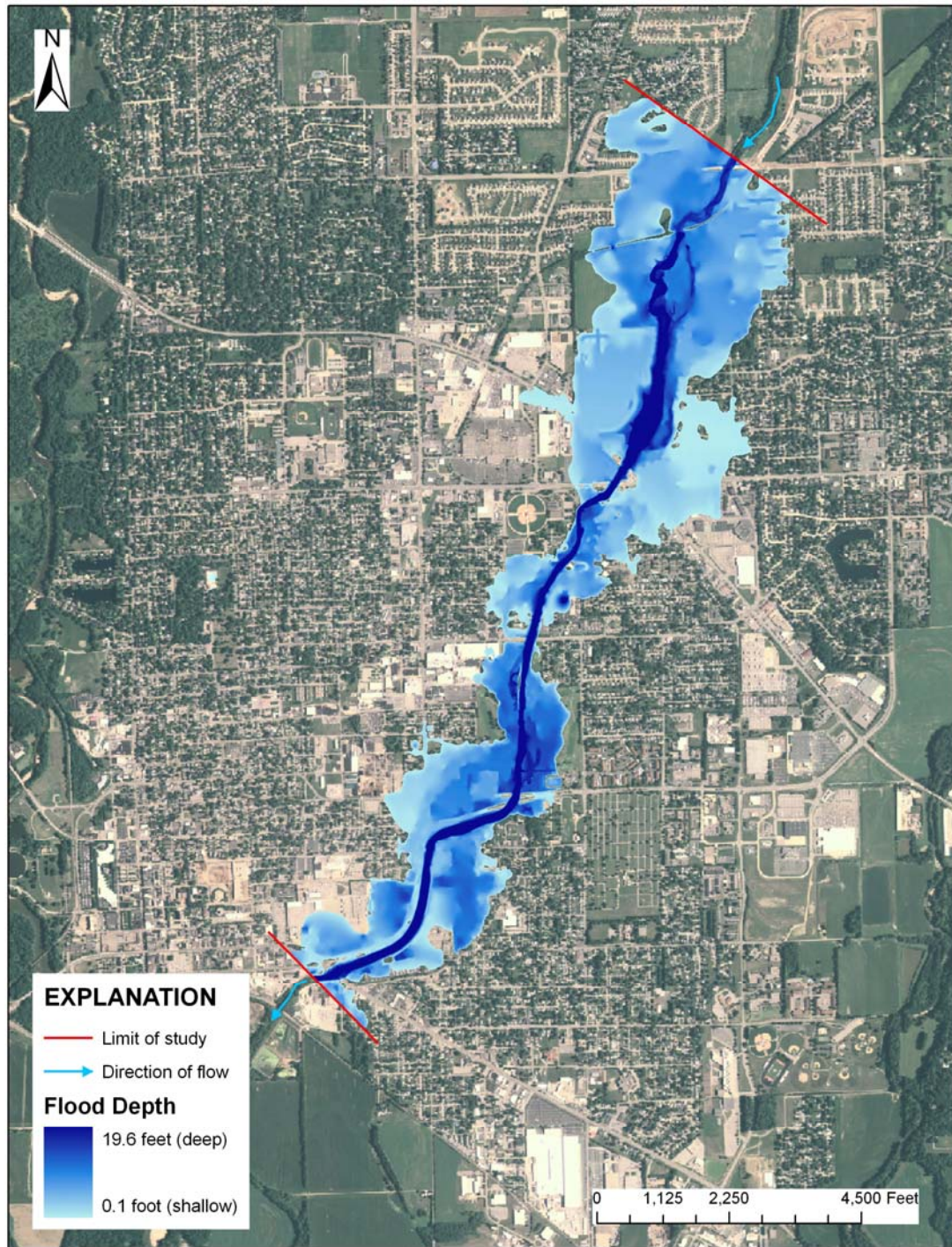
Approximate flood-peak extents and depths, flood of June 7–9, 2008, for the East Side Swale at Edinburgh, Indiana. Aerial photograph courtesy of Indiana University, Indiana Spatial Data Portal, 2007 National Agriculture Imagery Program, accessed August 15, 2008, at <http://www.indiana.edu/~gisdata/statewide/07naip.html>



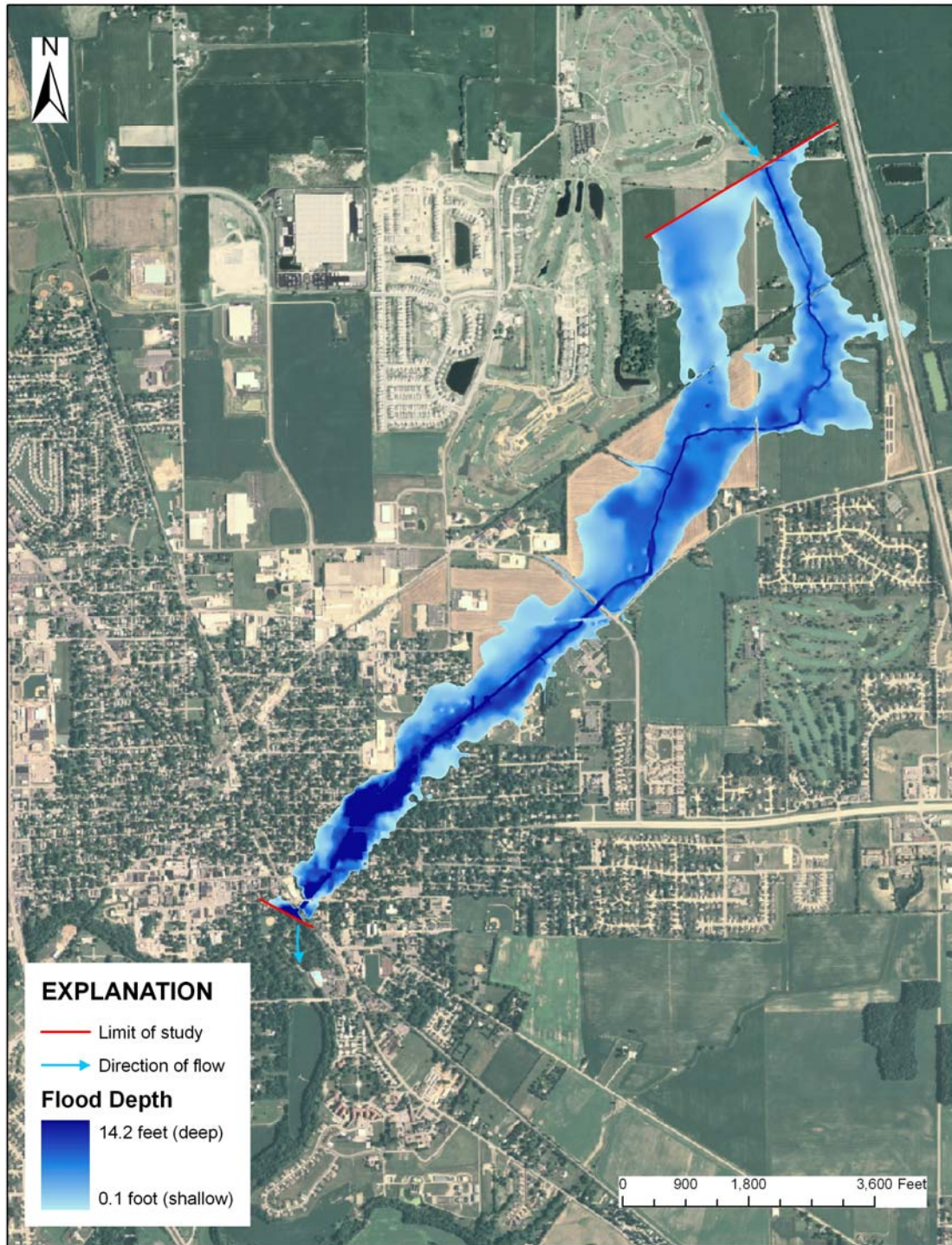
Approximate flood-peak extents and depths, flood of June 7–9, 2008, for Eel River at Worthington, Indiana. Aerial photograph courtesy of Indiana University, Indiana Spatial Data Portal, 2007 National Agriculture Imagery Program, accessed August 15, 2008, at <http://www.indiana.edu/~gisdata/statewide/07naip.html>



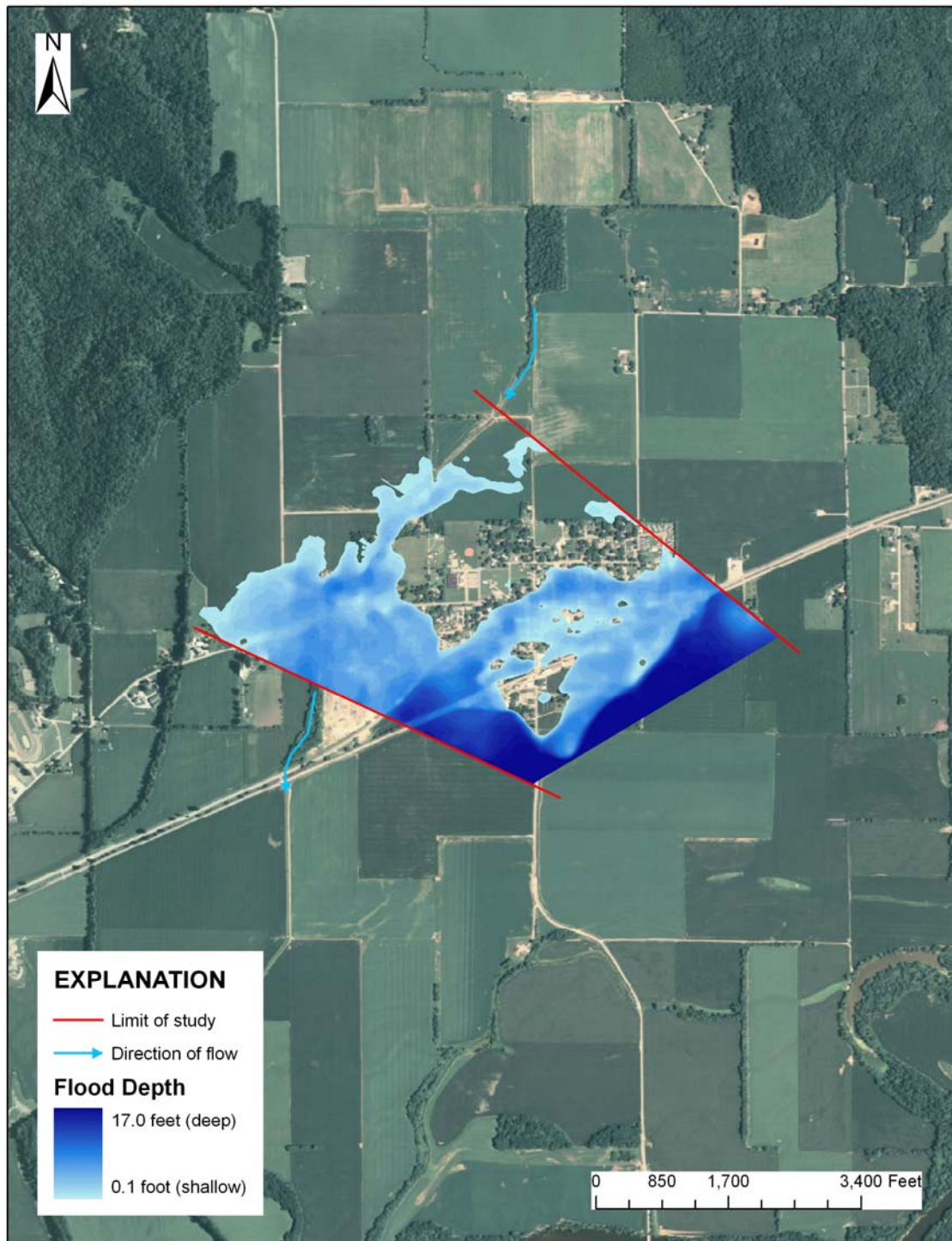
Approximate flood-peak extents and depths, flood of June 7–9, 2008, for the Flatrock River at Columbus, Indiana. Aerial photograph courtesy of Indiana University, Indiana Spatial Data Portal, 2007 National Agriculture Imagery Program, accessed August 15, 2008, at <http://www.indiana.edu/~gisdata/statewide/07naip.html>



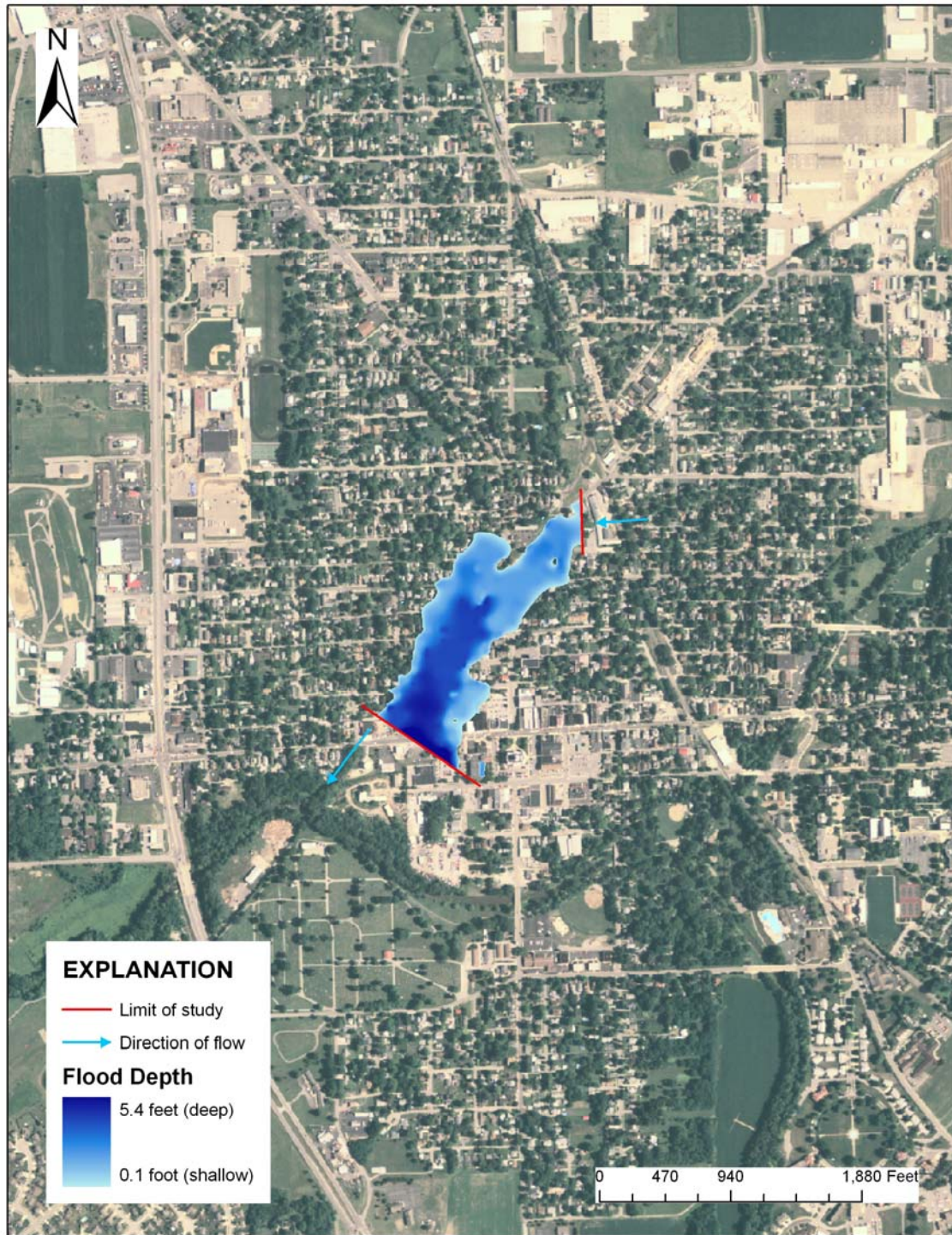
Approximate flood-peak extents and depths, flood of June 7–9, 2008, for Haw Creek at Columbus, Indiana. Aerial photograph courtesy of Indiana University, Indiana Spatial Data Portal, 2007 National Agriculture Imagery Program, accessed August 15, 2008, at <http://www.indiana.edu/~gisdata/statewide/07naip.html>



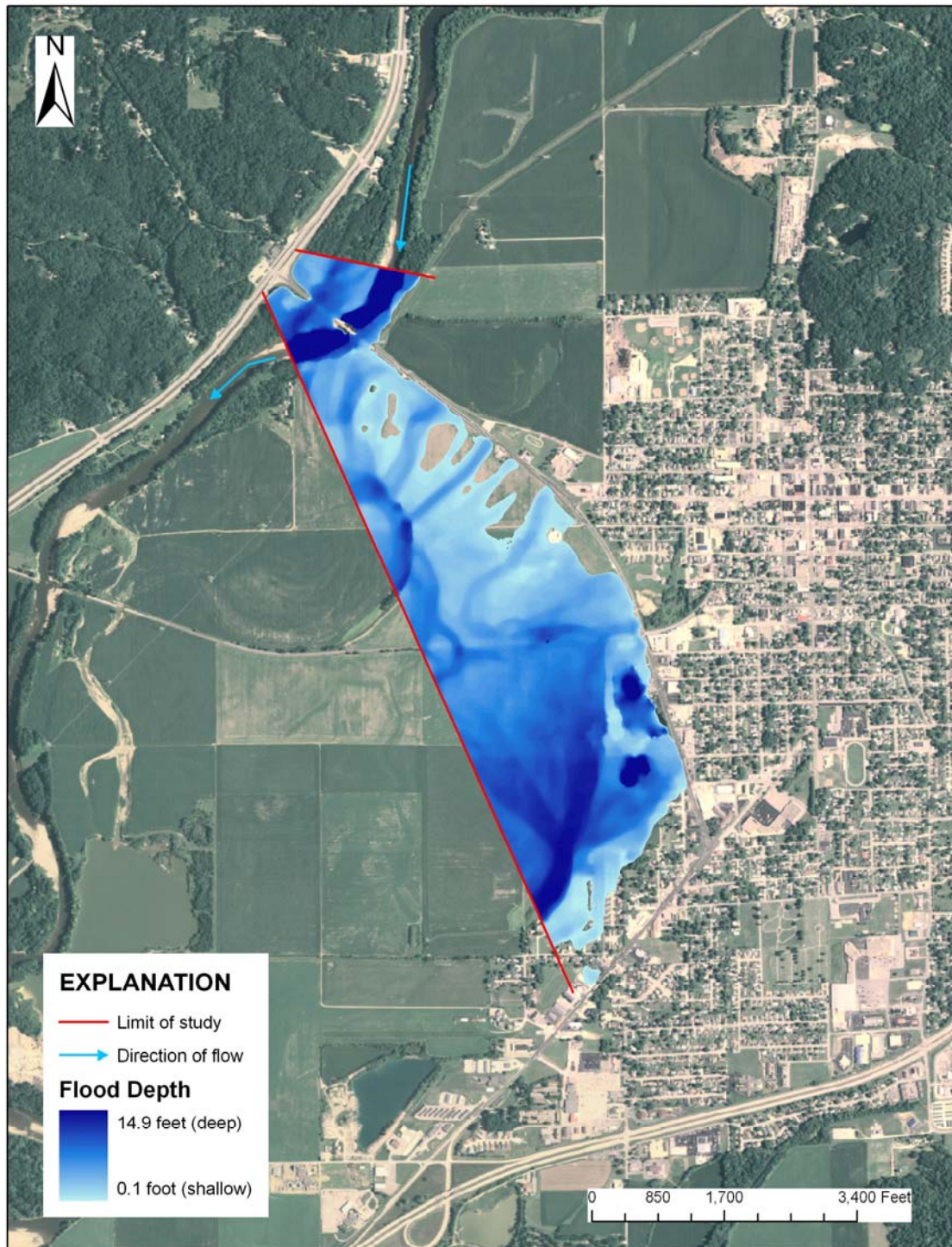
Approximate flood-peak extents and depths, flood of June 7–9, 2008, for Hurricane Creek at Franklin, Indiana. Aerial photograph courtesy of Indiana University, Indiana Spatial Data Portal, 2007 National Agriculture Imagery Program, accessed August 15, 2008, at <http://www.indiana.edu/~gisdata/statewide/07naip.html>



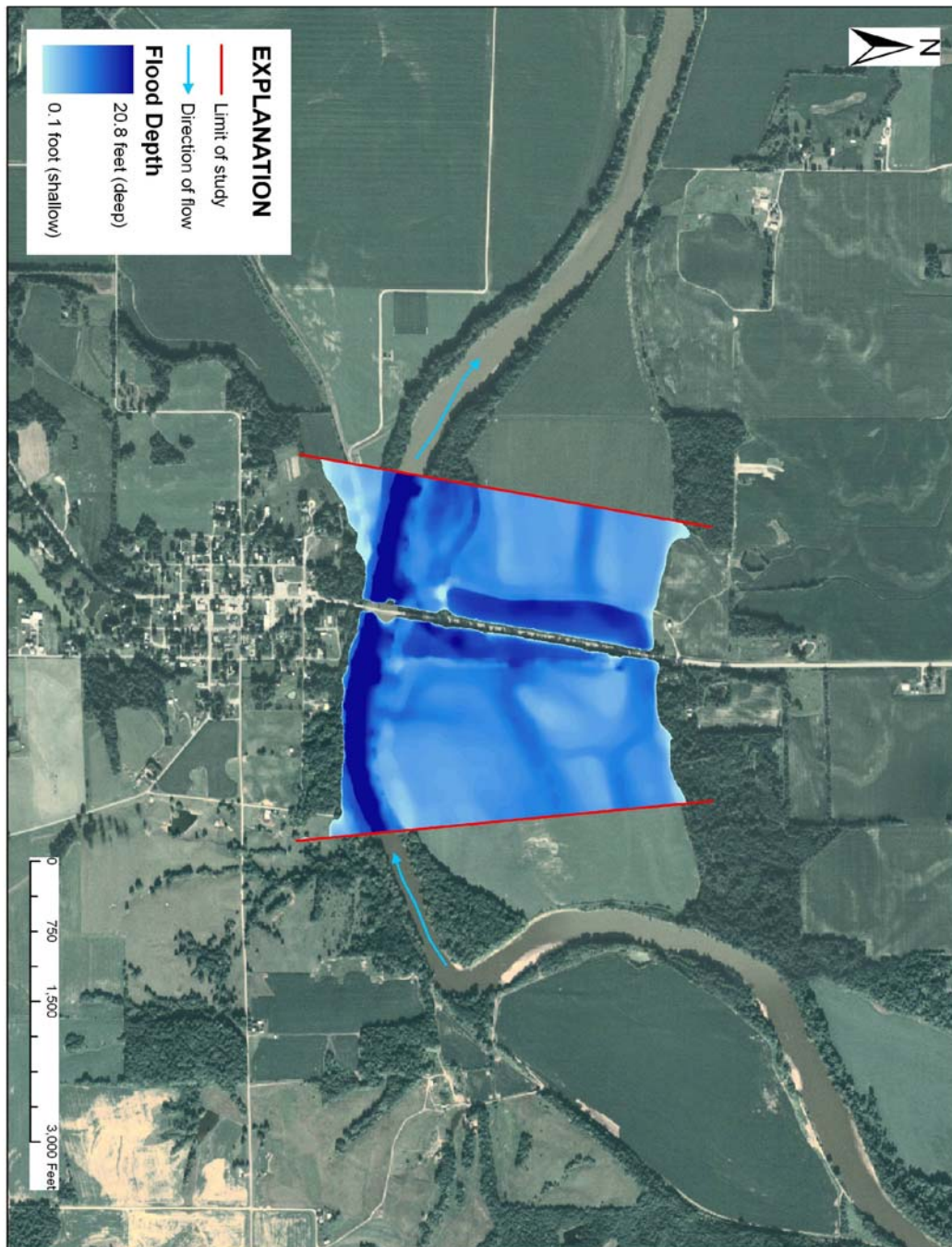
Approximate flood-peak extents and depths, flood of June 7–9, 2008, for an unnamed tributary of Fall Creek at Paragon, Indiana. Aerial photograph courtesy of Indiana University, Indiana Spatial Data Portal, 2007 National Agriculture Imagery Program, accessed August 15, 2008, at <http://www.indiana.edu/~gisdata/statewide/07naip.html>



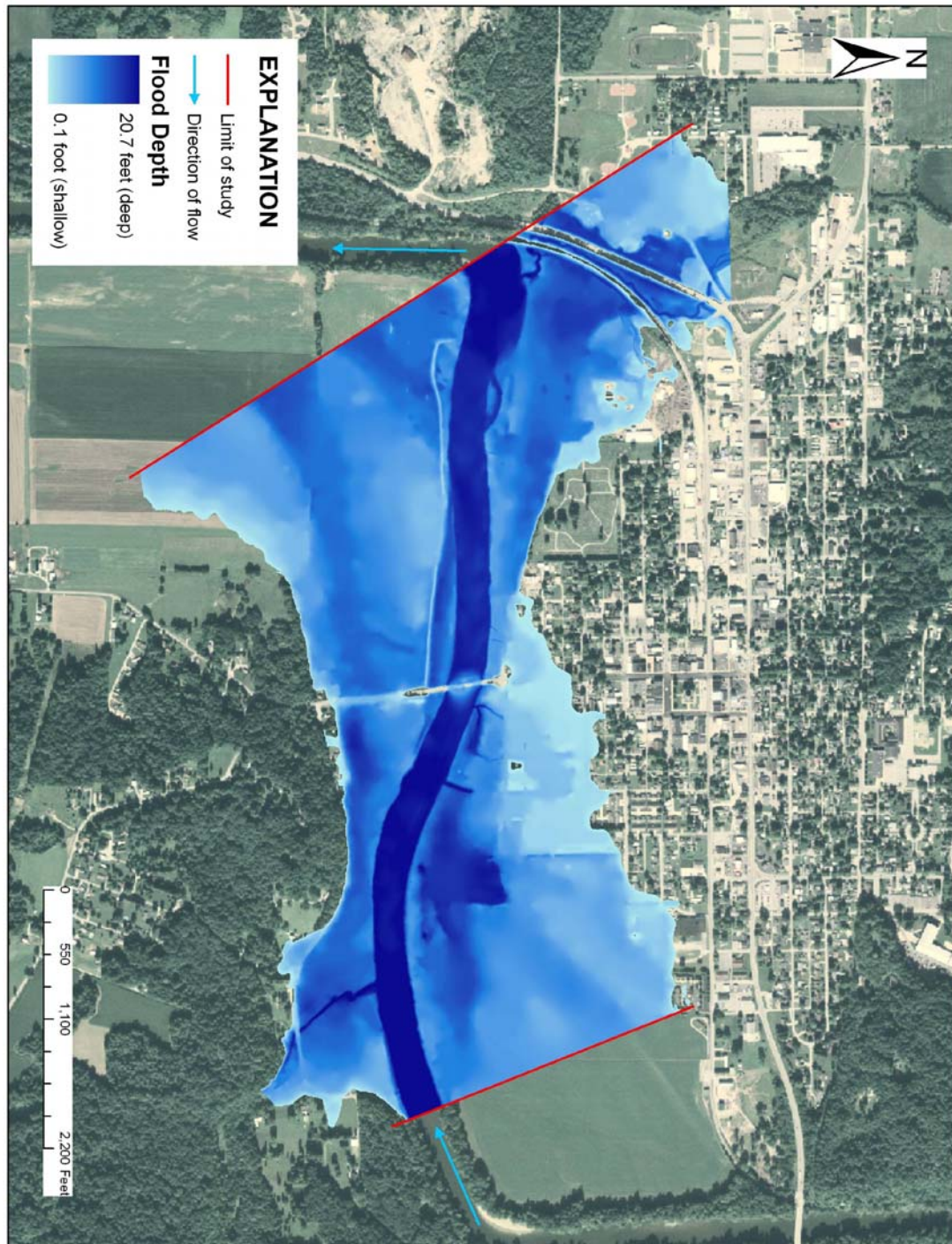
Approximate flood-peak extents and depths, flood of June 7–9, 2008, for an unnamed tributary of Youngs Creek at Franklin, Indiana. Aerial photograph courtesy of Indiana University, Indiana Spatial Data Portal, 2007 National Agriculture Imagery Program, accessed August 15, 2008, at <http://www.indiana.edu/~gisdata/statewide/07naip.html>



Approximate flood-peak extents and depths, flood of June 7–9, 2008, for the White River at Martinsville, Indiana. Aerial photograph courtesy of Indiana University, Indiana Spatial Data Portal, 2007 National Agriculture Imagery Program, accessed August 15, 2008, at <http://www.indiana.edu/~gisdata/statewide/07naip.html>



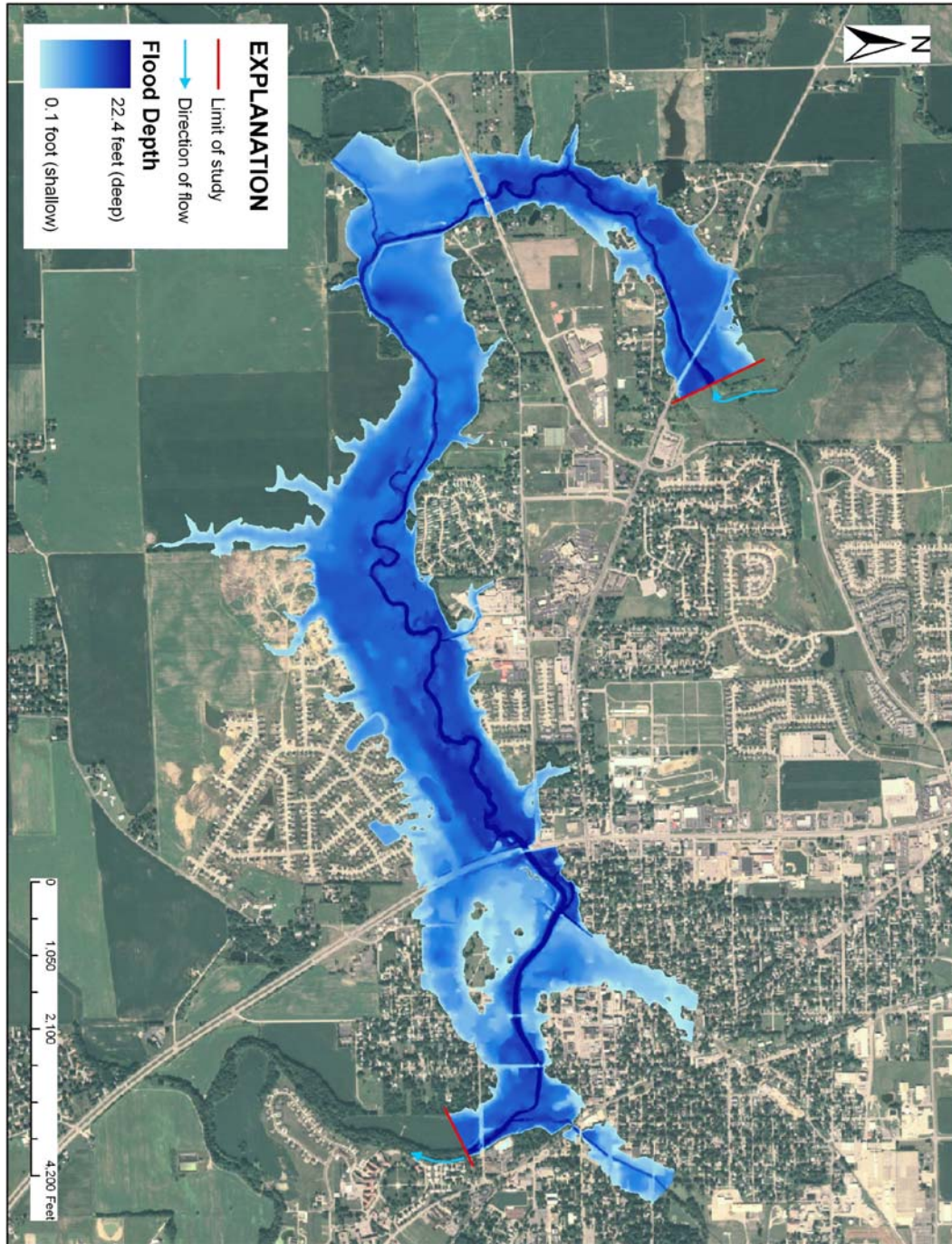
Approximate flood-peak extents and depths, flood of June 7–9, 2008, for the White River at Newberry, Indiana. Aerial photograph courtesy of Indiana University, Indiana Spatial Data Portal, 2007 National Agriculture Imagery Program, accessed August 15, 2008, at <http://www.indiana.edu/~gisdata/statewide/07naip.html>



Approximate flood-peak extents and depths, flood of June 7–9, 2008, for the White River at Spencer, Indiana. Aerial photograph courtesy of Indiana University, Indiana Spatial Data Portal, 2007 National Agriculture Imagery Program, accessed August 15, 2008, at <http://www.indiana.edu/~gisdata/statewide/07naip.html>



Approximate flood-peak extents and depths, flood of June 7–9, 2008, for the White River at Worthington, Indiana. Aerial photograph courtesy of Indiana University, Indiana Spatial Data Portal, 2007 National Agriculture Imagery Program, accessed August 15, 2008, at <http://www.indiana.edu/~gisdata/statewide/07naip.html>



Approximate flood-peak extents and depths, flood of June 7–9, 2008, for Youngs Creek at Franklin, Indiana. Aerial photograph courtesy of Indiana University, Indiana Spatial Data Portal, 2007 National Agriculture Imagery Program, accessed August 15, 2008, at <http://www.indiana.edu/~gisdata/statewide/07naip.html>