

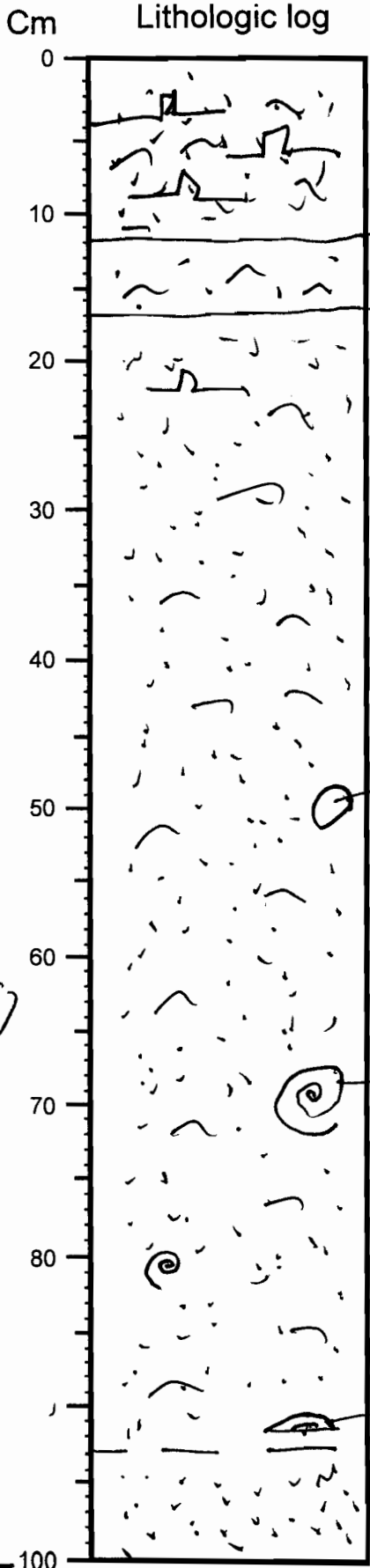
VISUAL CORE DESCRIPTION

Cruise _____ Sta. _____ Core no App 01

Describer Towshell Sta. Location Porters Bar

Lithologic log

Detailed Description



Oxide green muddy sand with oyster shell fragments

Light brown sandy mud with shell fragments (no oyster though)

Oxide green muddy medium sand with shell hash (some oyster frag at top) and some whole shells.

clam

snail

brachio

①

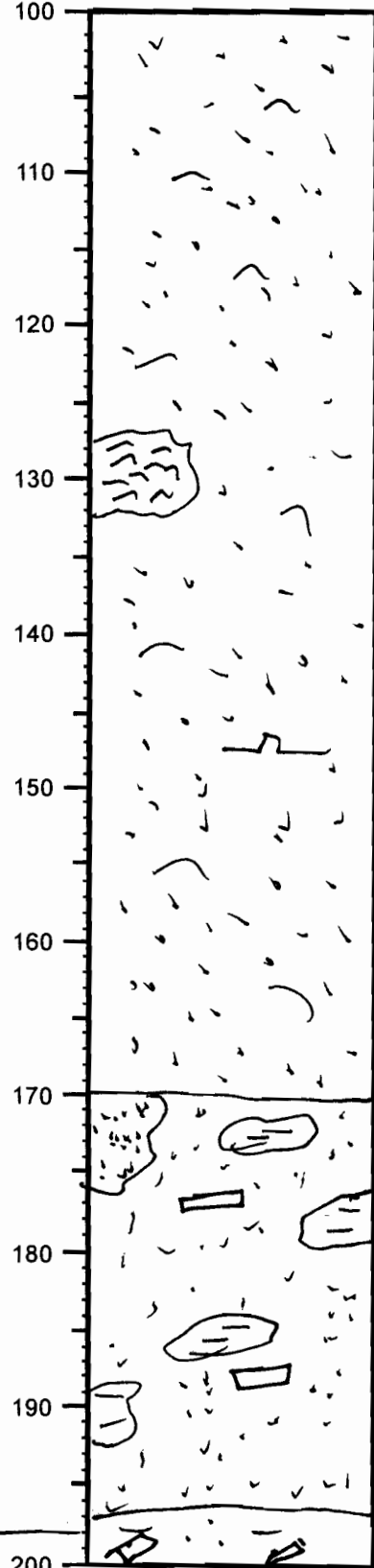
VISUAL CORE DESCRIPTION

Cruise _____ Sta. _____ Core no App 01.

Describer _____ Sta. Location _____

Lithologic log

Detailed Description



Grayish green medium muddy sand with only scattered shell fragments.

Grayish green med sand with burrows filled either with mud or light brown sand.

Light bluish gray ^{stiff} silty clay with some fine sand (197-203 cm). Wood fragments but no shell hash

2

3

VISUAL CORE DESCRIPTION

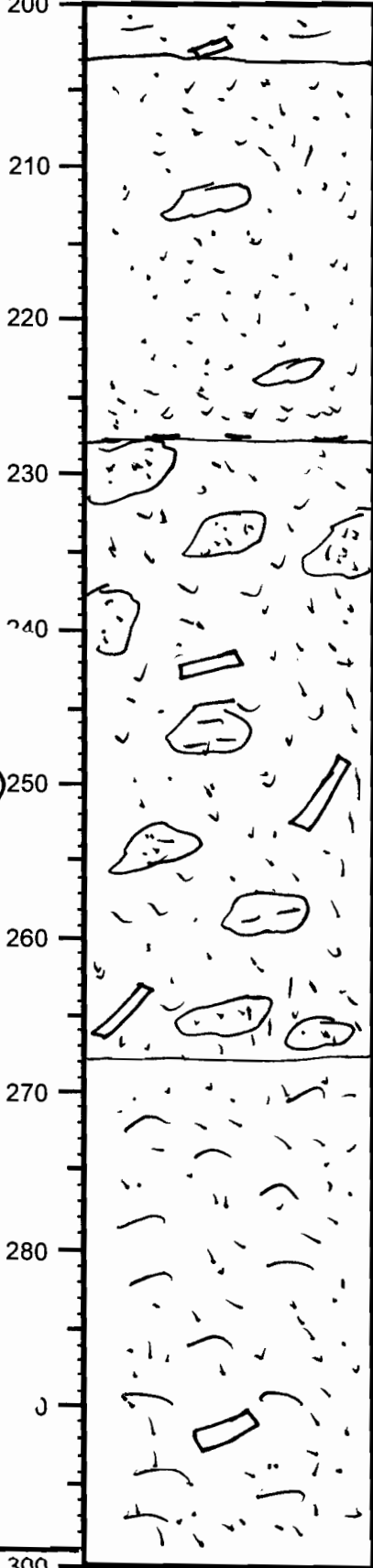
Cruise _____ Sta. _____ Core no App 01

Describer _____ Sta. Location _____

Lithologic log

Detailed Description

Cm
200



Brownish grey medium sand with scattered silt-filled burrows.
No shell hash

Brownish grey medium sand (oxidized???) with some wood fragments and dark grey mottles (burrows?) filled mostly with med. sand.
No shell hash

Medium sand with abundant shell hash
Grayish green color.
Some whole shells, but no oyster shells or fragments.

300

VISUAL CORE DESCRIPTION

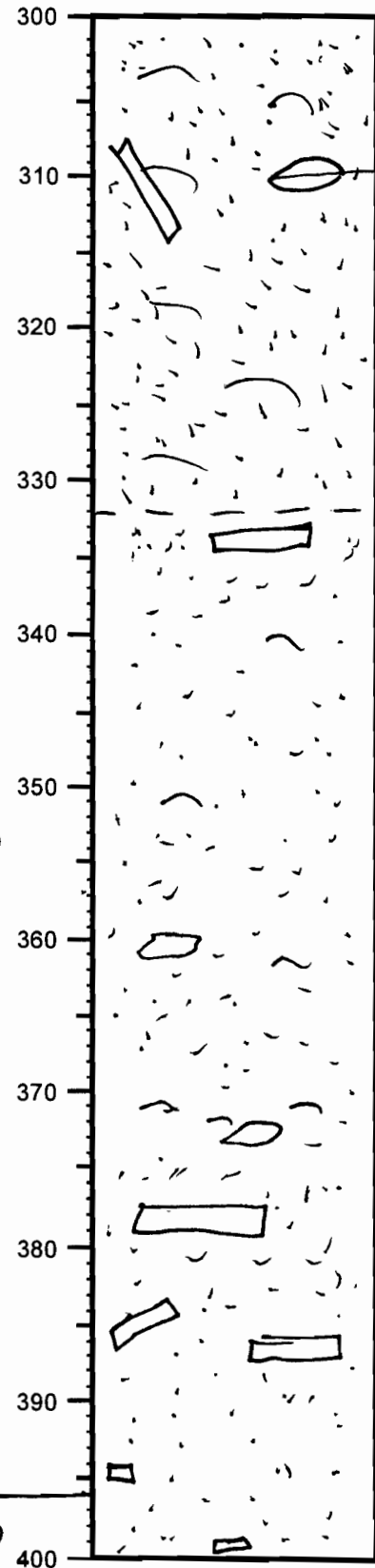
Page 4 of 5

Cruise _____ Sta. _____ Core no APP 01

Describer _____ Sta. Location _____

Cm Lithologic log

Detailed Description



Implore (?) clam - tooth shells,

Medium dark grey medium/course
watery sand with scattered shell
fragments, scattered mud-filled burrows
and abundant wood.

(4)

(5)

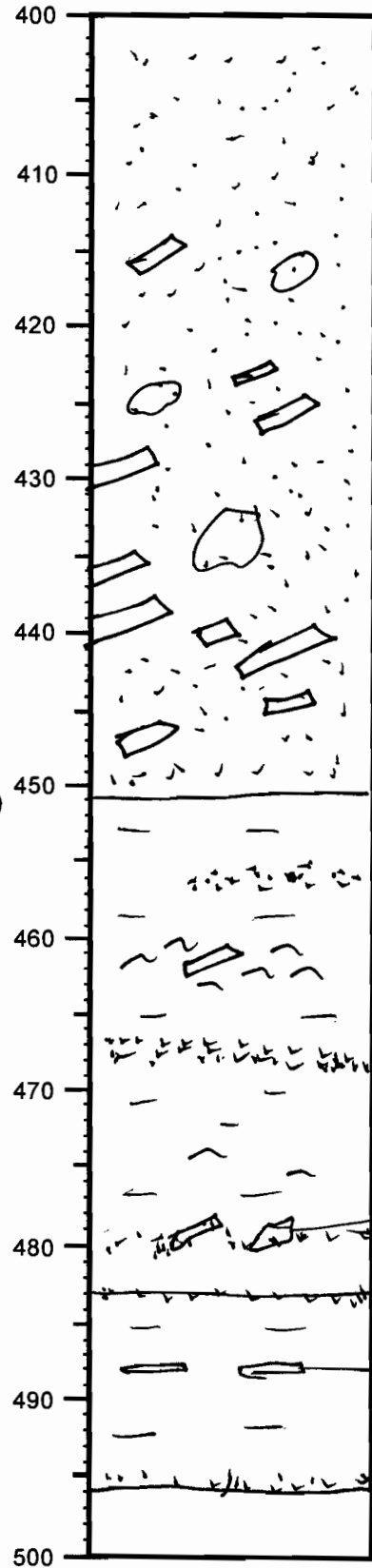
VISUAL CORE DESCRIPTION

Cruise _____ Sta. _____ Core no hsp 01

Describer _____ Sta. Location _____

Lithologic log

Detailed Description



Burrows(?) filled with light brown sand.

Stiff bluish grey clay alternating with beds of sand &/or shell hash. (451-497cm)

root??

root??

497cm

5