

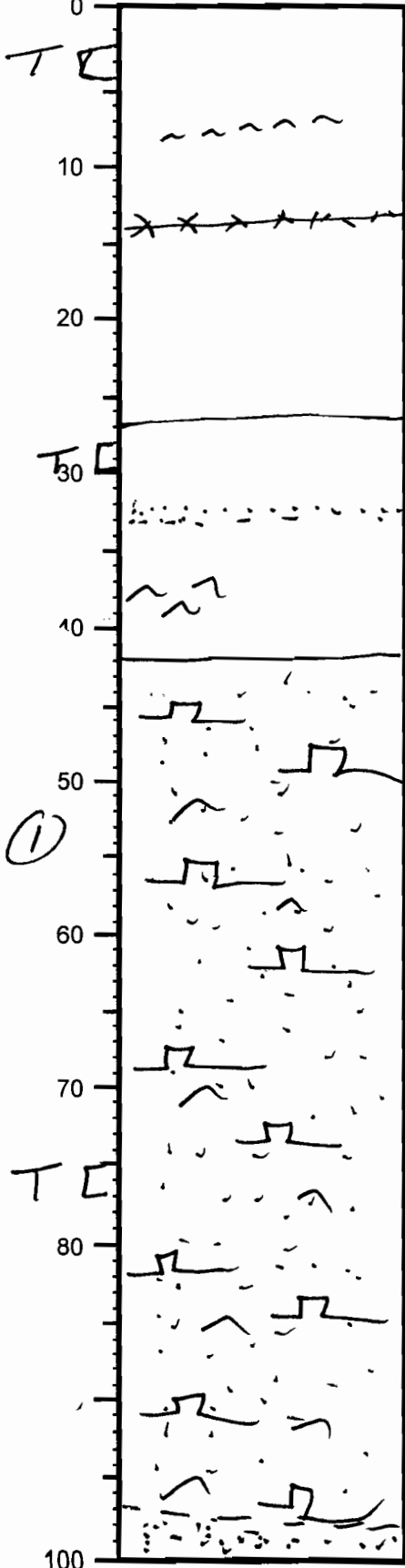
VISUAL CORE DESCRIPTION

Cruise _____ Sta. OSL core Core no App 10

Describer Twickell Sta. Location East of Norman's Bar

Cm Lithologic log

Detailed Description



Organic green silty mud with some fine sand
Some organics + fine shell beds. (0-28 cm)

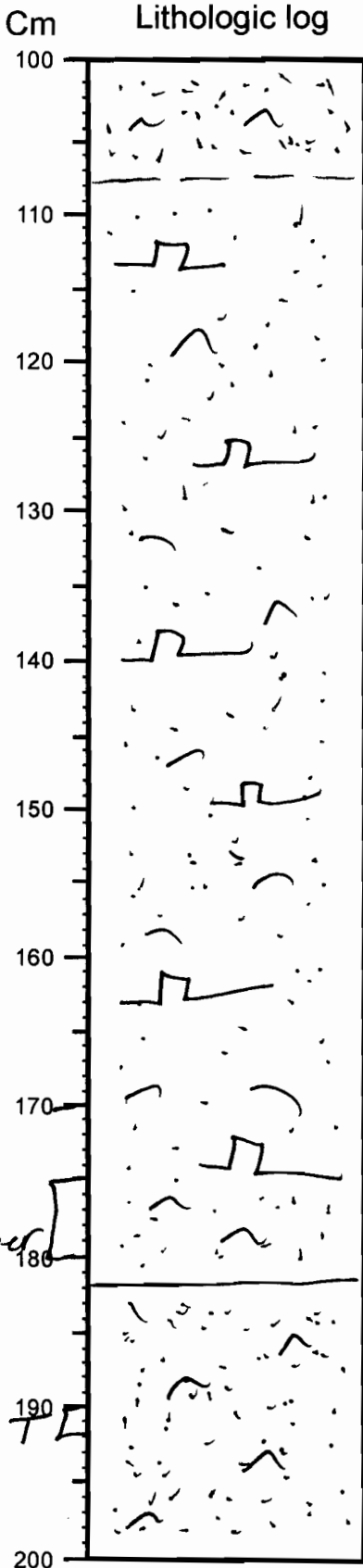
Light brown soupy clay with one sand bed
near base.

Organic green muddy coarse sand
with oyster shells, oyster shell fragments
& shell hash (42-97 cm)

VISUAL CORE DESCRIPTION

Cruise _____ Sta. _____ Core no App 10

Describer _____ Sta. Location _____



Detailed Description

Coarse muddy sand without oysters

Coarse grayish green muddy sand with abundant oysters + shell fragments

Grayish green ^{muddy} coarse sand with some shell fragments but no oysters

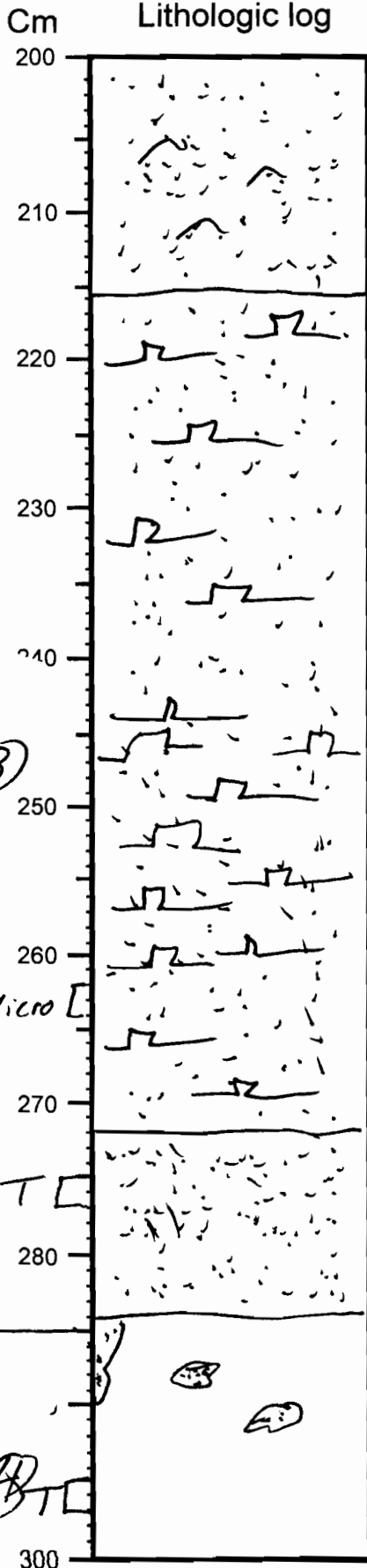
VISUAL CORE DESCRIPTION

Cruise _____ Sta. _____ Core no App 10

Describer _____ Sta. Location _____

Lithologic log

Detailed Description



Oyster bed in a coarse muddy sand matrix - water content higher than above.

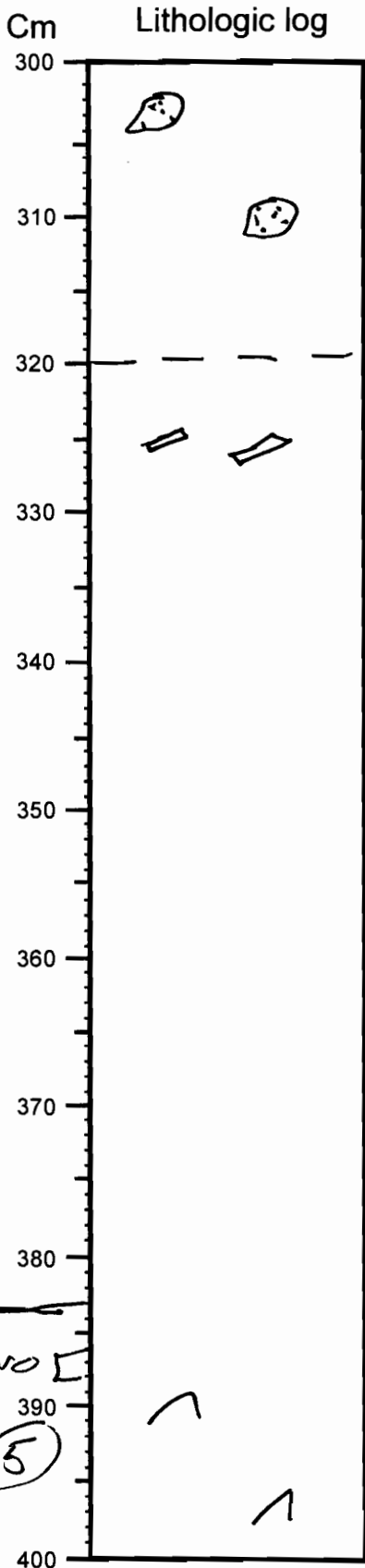
Coarse muddy sand (little mud) with little shell hash

Burrowed silty clay - grayish green color
Burrows filled with coarse sand from above bed + decrease in abundance with depth

VISUAL CORE DESCRIPTION

Cruise _____ Sta. _____ Core no App 10

Describer _____ Sta. Location _____



Detailed Description

stiff
bruish green clay with scattered
shell fragments

(4)

(5)

Micro

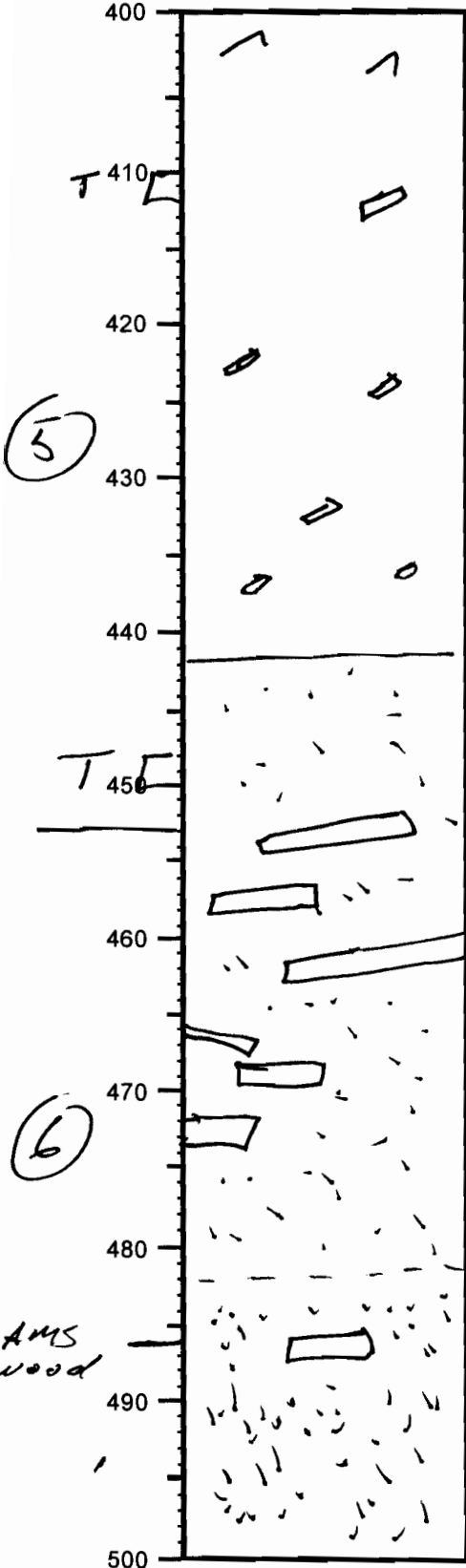
VISUAL CORE DESCRIPTION

Cruise _____ Sta. _____ Core no App 10

Describer _____ Sta. Location _____

Cm Lithologic log

Detailed Description



Grayish green clay with increased organics at base

Dark brown organic rich & fine sand with lots of wood (big pieces) that grades downward to a medium sand

- palatoid contact

yellowish gray well/course sand with little mud + no shell hash

VISUAL CORE DESCRIPTION

Page 6 of 6

Cruise _____ Sta. _____ Core no. App 10

Describer _____ Sta. Location _____

Cm

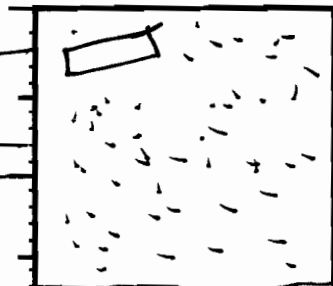
Lithologic log

Detailed Description

500

AMS
Wood?

⑥ T



517 cm